

# The Quill

SEPTEMBER 2014



# Queen Anne

LUTHERAN CHURCH

## Inside this issue

|   |       |
|---|-------|
| Capital Campaign                                | 3     |
| Transition Process Update                       | 5     |
| From the Cantor                                 | 6     |
| A Letter from our Diaconal Intern               | 8     |
| Announcements & Birthdays                       | 9     |
| Finance Committee;<br>Men's Ministry; LWR Dates | 10    |
| Book Group; Thank-Yous                          | 11    |
| Sunday School                                   | 12    |
| Faith & Film                                    | 13    |
| L.Y.O.N.S News                                  | 14    |
| LWR and EWLCA Service Projects                  | 14-15 |
| HomeBase  | 16    |
| Women of QALC Events                            | 17-18 |
| Bishop's Message                                | 20    |
| The Last Word                                   | 21-22 |
| Serving in September                            | 23    |
| September Calendar                              | 24    |





WOW! CAN YOU HEAR ME NOW?



## **CAPITAL CAMPAIGN Begins This Fall**

Coming this fall, we will embark upon a Capital Campaign to raise \$125,000 to install a new sound system in the Sanctuary, replace the Grand Piano, and refinish the pulpit and altar table in the Chancel.

Since the completion of our remodel in 2010, we have had a noticeable problem in the Sanctuary with the spoken word. This comes as no news to those of you who have struggled to hear the spoken word. There are places in the Sanctuary where the word is clear and intelligible and places where it is simply impossible to clearly hear the spoken word. Two speakers dating from 1959 are currently being used; they stand near the lectern and the pulpit. The speaker suspended from the ceiling no longer works.

Approximately two years ago, a Sound System Task Force was assembled (Brent McCullough, Bill and Janet Bush, Ben Matter, Jacqui Darroch, John Coney and Arletta Anderson) to study the problem and recommend a solution for the sound system in the nave. The task force recommended we engage Mr. David Hosbach, a sound engineer, to study our situation and recommend a course of action. Mr. Hosbach, who is president of DHS Audio Visions, spent a weekend with us assessing our situation. The costs associated with Mr. Hosbach's time to review our sound system and make recommendations were paid for by a member of the Task Force. As a result of the report, this past June, the Task Force recommended we move forward with Mr. Hosbach's plan. The cost of the new sound system, which also includes a state of the art video system, is \$75,000.

With regard to the piano, the current Steinway Grand Piano has been on loan to us for the past decade. The person who owns the piano needed a place to store her piano while attending medical school on the east coast. Our piano tuner, Richard Weeks, suggested she might want to contact us. She did, and made us an offer we could not refuse—a rental fee of \$50 a month. She has now returned to Seattle and has a home large enough to accommodate her beloved piano.

Since learning that the piano will be returned to the owner, Arletta has diligently been looking into pianos that would be appropriate for our music needs and worship space. Though not in a position to purchase a Steinway, Arletta assures us there are many good grand pianos available for about \$25,000.

The remaining funds of \$25,000 will be put towards the refinishing of some of the nave furnishings: the pulpit and the altar table, along with the two modesty panels and the first few pews. The process of refinishing was started after the completion of the remodel when the communion rails and lectern were refinished. The long-range plan is to eventually have all the pews refinished.

Our schedule for the campaign is as follows:

**August 2014** – Secure matching funds. I am pleased to report that we have already received a matching pledge of \$25,000. Our generous donors have committed this \$25,000 to the fund with a matching offer. That is, the \$25,000 comes to us if we can find another donor who will match this generous gift.

**September 14** - On this Sunday, after the 10:30 am service, a congregational vote will be taken to authorize the Capital Campaign of \$125,000 for the sound system, the piano, and the refinishing of the pulpit, altar table, modesty panels and some pews. Once the Capital Campaign is authorized by the congregation we will send out pledge cards inviting members and friends of QALC to make a pledge toward the sound system, piano and furniture refinishing.

**September 28** - On this last Sunday in September, we will have an all-congregational talent show to officially “kick-off” our capital campaign. After the 10:30 am service, we will gather in the Fellowship Hall for food and drink and plenty of entertainment by the many multi-talented children, youth and adults in our congregation. Pledge cards will be distributed and the campaign will be off and running.

**December 31** - On the last day of this calendar year 2014, we hope to have received all of the outstanding pledges.

I am confident that as a congregation we can do this and do it quickly and within the proposed timeline above. It is absolutely necessary for QALC to have a new sound system. It has been disappointing and a major distraction to several of our members who cannot hear the spoken word clearly enough to understand what the lector or the preacher is saying. I empathize with them, as I sit in one of those places where the words of the speaker are unclear.

Please begin to pray and plan for your gift now. If you already know you want to give to this campaign, we would welcome your pledge now. Once we have secured half of the monies needed to complete the sound system we will be able to sign a contract and the work to install our new sound system will be ready to go.

Can You Hear Me Wow?

Blessings,



Pastor Wayne

**CONGREGATIONAL MEETING – Sunday September 14**, immediately following the 10:30 worship service.

The purpose of this special meeting of the congregation is to authorize a capital campaign to raise funds for a new sound system in the Sanctuary, a piano for the Sanctuary and to refinish the pulpit, altar, modesty panels and possibly the first few pews in the Sanctuary.

The following motion will be the only consideration at this special congregational meeting.

WHEREAS we have experienced a problem with the spoken word in our Sanctuary since the 2009 remodel and have authorized a Sound System Task Force to engage DHS Audio Visions to design a sound system to alleviate this problem: and

WHEREAS we will soon be returning the Sanctuary piano to its owner at her request, \$25,000 of the capital campaign will be used to replace the Sanctuary piano: and

WHEREAS the process of refinishing the Sanctuary furnishings was started after the completion of the remodel of our Sanctuary, when the communion rail and lectern were refinished, \$25,000 of the capital campaign will be used to refinish the pulpit, and altar table, along with the two modesty panels and the first few pews:

Therefore, BE IT RESOLVED that the congregation of Queen Anne Lutheran authorizes a capital campaign to raise \$125,000 to cover the costs associated with the purchase and installation of a new sound system for the Sanctuary, the acquisition of a piano for the Sanctuary, and the refinishing of Sanctuary furnishings.

## *Transition Process Update*

Dear QALC Brothers and Sisters in Christ,

This past month several members of the QALC Church Council had the opportunity to meet with the Reverend Bishop Kirby Unti and the Assistant to the Bishop Reverend Kathryn Buffum to discuss the upcoming Pastoral Transition this fall. It was very informative and gave the Council and staff a general idea of what to expect during the coming year. Many of you may have been in a congregation during a time of transition, maybe even right here at Queen Anne. As policies and procedures have changed over the years, we will do our best to keep you informed as we embark on this journey together. Below is a brief timeline of what to expect in the coming months.

The most important message conveyed in this meeting was to be intentional and thoughtful in our celebration of Pastor Wayne's ministry here at Queen Anne. Taking time with closure will set the table for the success of our future ministry. I have no doubt that our gratitude and appreciation will shine through during this process. While transitions and change can be bittersweet, taking the time to convey thanks can be a healing and meaningful process for all involved.

Late August/September: Formation of a Celebration Committee to plan a special event to honor Pastor Wayne and Jackie's ministry here at Queen Anne Lutheran Church. If you would like to be part of this Committee, please email me right away!

September: Formation of a Transition Committee. This committee will meet with Rev. Bishop Unti and Assistant to the Bishop Rev. Buffum to create a Ministry Site Profile, which will be used in selecting an Interim Pastor for QALC.

October: Celebration of Ministry, date TBA.

Interim Pastor chosen by Rev. Bishop Unti and Assistant to the Bishop Rev. Buffum

November: Interim Pastor begins.

November/December: Call Committee members chosen and voted on by the Congregation.

After the Call Committee is chosen and begins the call process more information will be communicated regarding the time line. If you have further questions, please don't hesitate to contact me. If you are interested in more details about the call process I would be happy to forward you the Congregational Handbook for Pastoral Transitions published by the Synod.

Throughout the transition and call process our Church Council will continue to prayerfully lead our Congregation and help our ministry thrive and flourish.

In Peace, Prayer and Partnership,

Kirsten Erickson

*QALC Church Council President*

[misskirsten77@hotmail.com](mailto:misskirsten77@hotmail.com)

(206) 898-0408

## *From the Cantor . . .*

Fall programming is back in September and the choirs are gathering again each week with renewed energy for mission and ministry.

The Chancel Choir, for high school students and adults, rehearses on Thursdays at 7:00pm in the Music Room. This choir serves in worship weekly at the 10:30 service.

The Shalom Choir for middle school girls rehearses on Wednesdays at 5:30-6:10pm in the Music Room. This choir serves in worship every 4-6 weeks.

The Cherub Choir for elementary students rehearses Wednesdays at 6:15-6:45pm in the Music Room. This choir serves in worship every 6-8 weeks.

The Handbell Choir for middle school/high school students and adults does not have weekly rehearsals, but is organized by sets. If you are interested in playing handbells, please contact me.

All our choirs welcome newcomers. Please email or call me if you are interested in being a part of the music ministry at Queen Anne Lutheran.

Thanks to all who have shared their musical gifts with us in worship during the summer months on Sunday mornings and on Wednesdays at our Holden Evening Prayer worship. Women's Choir, Men's Choir, Intergenerational Choir, Handbell Choir, Ayla Rochelle, Emily Meade, Richard Crummett, Mei Le Smith, Shalom Choir, Emmett and Sophie Pritchard, Karen McCullough, Deepa Patten, Joel Matter, and Jeannette Banobi. We appreciate your gifts and are grateful for your stewardship of time and talent.

And thanks to the five members of the Roosevelt High School Jazz Band who provided jazz quartet music for us at our Jazz on the Grass events on Wednesdays in August. Great fun and great players . . . the food was great, also! Looking forward to this again in August, 2015.



*Arletta Anderson, Cantor  
and Associate in Ministry  
ajp724@comcast.net, 425.355.8776*

# All That Jazz on the Grass



## *A letter from our Diaconal Intern*

Greetings to you, not only from myself,  
but from my sisters in the Deaconess Community of the ELCA!

I recently returned from the annual Deaconess Assembly, a 5-day conference hosted this year in the heat and humidity of Nebraska. It was especially meaningful for me, because it was this year that I was invested into the Deaconess Community.

In the journey of a deaconess candidate, investiture (from the Latin “investire,” or “to clothe”) marks her entrance into the community. It is a ceremony of mutual commitments—the candidate to the community, and the community to the candidate. She receives her title of “Sister” and is invited to wear the garb of the deaconess—plain black with a white collar. She is given the candidate pin of an invested sister. Other sisters in the community bring offerings of prayers, cards, small gifts, and big smiles. The party extends late into the night, with wine, stories, and laughter all abundantly poured.

She is now, formally, a deaconess and sister.

I had the great privilege to be invested together with three other candidates from around the country—a parish nurse from Minnesota, a teacher who works with immigrants from Ohio, and a budding artist from Florida. Together, the four of us stepped into the 130 year legacy of the Deaconess Community.

We now each look forward into the internships that prepare us for the close of candidacy and eligibility for consecration to the ELCA Word & Service roster (the equivalent of a pastor’s ordination to the Word & Sacrament roster). I have the incredible gift of spending six months of that internship walking with and learning from you.

*Compelled by the love of Christ, and sustained by community, we devote our lives to proclaiming the Gospel through ministries of mercy and servant leadership.*

In some ways, perhaps this is the mission that blazes in the heart of all baptized Christians. But when I am together with these theologically trained, gifted, and incredibly passionate women we call deaconesses, that devotion permeates everything. And I come home to you from my time with these sisters feeling inspired and energized for the work ahead. I am ready to serve!

With a grateful heart,  
Sister Clare Josef-Maier



## ANNOUNCEMENTS

### *Ushers, Flowers, Coffee*

Ushers and coffee hosts are still needed for September (see page 15).

**Please write your name clearly on the narthex**

**sign-up!** And if you signed up to provide flowers, please contact the office at [admin@queenannelutheran.org](mailto:admin@queenannelutheran.org) or 284-1960 to let us know if you would like it noted that the flowers are in honor of, or in remembrance of, a specific person or event.



### SEPTEMBER BIRTHDAYS

|    |                      |
|----|----------------------|
| 1  | Michael Richey       |
| 2  | Margaret Quander     |
| 3  | Bridget Nock         |
| 5  | Connie Reid          |
| 7  | Storm Hodge          |
| 8  | Susan Dibble         |
| 17 | Devin Wieland        |
| 17 | Joan Crummett        |
| 18 | Jackson Petersen     |
| 19 | Madeleine Houle      |
| 20 | Debbie Rosenthal     |
| 21 | Charles Mathes       |
| 21 | Jason McCauley       |
| 21 | John Coney           |
| 22 | Florence Deleranko   |
| 22 | Kathryn McGavick     |
| 24 | Ricky Crummett       |
| 25 | Georgeanne Robertson |
| 25 | Shirley Flory        |
| 27 | Marjorie Dowd        |
| 29 | Katherine Thomas     |

*If your (or family member's) birthday is missing from this list, please contact the church office at [admin@queenannelutheran.org](mailto:admin@queenannelutheran.org) or 206-284-1960*

### **I Once Was Lost . . .**

Our office table has a basket overflowing with left-behind objects. Please give the following items hope of being found:

- 2 pairs of glasses, one in a soft case
- 2 pairs of plastic sunglasses
- 2 large leftover containers
- 1 lovely silk scarf
- 1 lovely wool scarf
- 1 child's Fisher-Price digital camera
- 1 garage door opener
- 1 notepad that says "RUN" "STOP" on the cover
- 1 Gregor and the Code of Claw paperback
- 1 abalone earring
- 1 ring that says "Believe"
- 1 mysterious sharp piece of jewelry
- 0 partridges or pear trees (so far!)

—*Barbara Bash*

### **A Fantastic Opportunity Awaits You!**

Ever wonder how the beautiful colors in the church change? Maybe you're curious about how The Table is prepared each week to celebrate Christ's gift to us? You are invited to become a part of an exciting group that works behind the scenes to enhance the worship experience of all that come through the doors. The Altar Guild invites anyone who is willing to serve in this important role for a couple of months a year. Parents, do you have someone in High School who needs community/leadership experience? This is a wonderful way to bond with your teen! This is great for couples and singles alike as well~

If you are interested in helping out please contact Joan or Richard Crummett at [katrinkaj1@comcast.net](mailto:katrinkaj1@comcast.net) or 206-261-4448.

## **2015 Guidelines for Expenditures**

It is that time again.

All committee heads, or anyone who needs to, or wants to provide input for potential 2015 expenditures, or income, please present your proposal to the Finance Committee on Thursday, Oct 30th in the Conference Room at 7-9pm. Please submit written documentation, whether or not you can attend the meeting. Given that we have other campaigns going on this year, and Pastor Wayne will be retiring, if you have any "non-routine" items, please submit them as well, even if numbers are tentative. Final numbers will be necessary by early December.

If you have suggestions, even if not for a particular budget amount, or you don't represent a particular committee, please submit those also.

*Great ideas that are not presented may not get into the 2015 guidelines.*

The Finance Committee consists of Myra Dittes, Ken Hockman, Tim Porter and Rich Mathes. Jason McCauley is the Council liaison. You can provide input to any of us, or put in our office mailbox—in the lower left section of mailboxes.

### **Queen Anne Men's Ministry (For men of all ages)**

We invite men of all ages to join in conversation and service to the community on a regular basis. Regular monthly meeting includes discussion of Scriptural topics, how they relate to our 21st century lives, and what we can do to live as Christians in the world.

**Sept 6:** Queen Anne all church event—volunteer time to help our neighbors with tasks from yard work to electrical.

**Sept 13, 8:30 AM in Chapel Conference Room.** Discussion about how to invite others (our friends, work associates, neighbors) to participate in service activities and discussion groups. Healthy snacks will be provided.

**Oct 11, 8:30 AM in Chapel Conference Room:** Continue discussion on how to involve neighbors, friends. Also, assemble school or personal care kits for Lutheran World Relief after discussion.

**Oct 31/Nov 1**—help load boxes for Lutheran World Relief at Our Redeemer's Lutheran Church in Ballard.

—*Rich Mathes, Richard Crummett*

### **Lutheran World Relief Kits**

The Men's Group will assemble kits at their Oct 11<sup>th</sup> meeting. Please do not assemble the kits on your own. The process is more efficient (and the kits more consistent) when we meet as a group and form an assembly line. Call Rich at 206-633-5795 if you want to schedule your own assembly line.

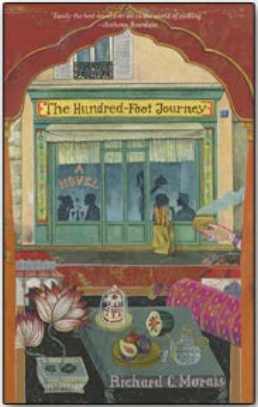
**Quilt and Kit Box Packers**—after 2<sup>nd</sup> service on Oct 26<sup>th</sup> from 11:30 AM to 1:00 PM in the Sanctuary. Families are invited; we now put bar codes inside and outside boxes so we will know where they are sent. Chloe Jones will be in charge. We will need packing boxes for quilts (18" x 18" x 24")—watch for people who have moved. Not the smaller book size.

**Quilt and Kit Box Loaders**—please mark your calendars now; LWR loading will be Oct 31<sup>st</sup> & Nov 1<sup>st</sup>.

—*Rich Mathes*

## Queen Anne Book Group

September Book Group will be led by Carol Ann Davis. We are reading *The Hundred-Foot Journey: A Novel* by Richard C. Morais.



*“That skinny Indian teenager has that mysterious something that comes along once a generation. He is one of those rare chefs who is simply born. He is an artist.”*

A middle-aged chef, Hassan Haji, recounts his life’s journey, from his family’s modest restaurant in Mumbai to his elegant restaurant in Paris where he has conquered the insular world of French haute cuisine. A tragedy at home in Mumbai pushes Hassan’s boisterous family into a picaresque journey across Europe, where they ultimately settle opposite a famous chef, Madam Mallory, in the remote French village of Lumière. After a series of hilarious cultural mishaps, the grand French chef discovers, much to her horror, that the young boy cooking in the cheap Indian restaurant across the way is a chef with natural talents far superior to her own. A culinary war ensues, full of plot twists, pitting Hassan’s Mumbai-toughened father against the imperious Madam Mallory, a battle royale that finally reveals to young Hassan his true destiny in life.

Full of eccentric characters, vivid settings, and delicious meals, Hassan’s charming tale lays bare the inner workings of the elite world of French haute cuisine. In the process, however, Hassan also discovers a truism that bedevils any man who has gone out into the world to make his mark: the true costs of rising to the top are only revealed later in life.

## THANK YOU

### QALC received thanks from the following organizations:

#### Queen Anne Helpline

For a donation of \$1,300.00

*from* Queen Anne Food Bank:

To the congregation at Queen Anne Lutheran:

Thank you so much for your recent donation of \$750! As always, we are so grateful for your support and caring. Just the other day I was wondering if we would meet our July fundraising goal, and then your contribution came in the mail helping us to not only meet, but surpass that goal!

Your support means many meals for neighbors in need.

Today I was reminded again of how important this service is when a mother and her son walked through our doors for their first visit. Seeing all the fresh produce she broke down in tears, confiding that they had eaten nothing but rice the night before. She was crying from relief because now she had one less worry during a difficult time. Thank you for helping our local families worry about one less thing.

Warm regards,  
Jasmine

*P.S. I ran out of space in the card, but I just wanted to let you know*

*that we welcomed Emily Meade to our staff this week. She is our new Operations Coordinator. I believe your congregation hosted her this year for LVC. What an exceptional addition to our team.*

*from* Compass Housing Alliance:

Dear Members of Queen Anne Lutheran Church:  
You celebrated a birthday today with your gift of \$4,200.00! The Compass Cascade Women’s Program turned 16 years old this July. During these 16 years, hundreds of women have found the safety and security to begin a new life . . . Thank you.

*Save the Dates:*

## **Dana Robinson Organ Concert, Nov. 2**

Dana Robinson is Associate Professor of Organ at the University of Illinois in Champaign/Urbana. Robinson has a Bachelor of Music with Distinction in Performance, a Master of Music from the New England Conservatory of Music, and a D.M.A. in Organ Performance from the University of Iowa. Robinson is a native of Boston and has performed on some of the most significant modern and historic organs in the United States. We look forward to welcoming Dana Robinson to Queen Anne Lutheran and to our Wech Pipe Organ at 3:00 PM on Sunday, November 2, 2014.

—Sponsored and supported by QALC's Fine Arts Ministry.



## **Church of Steadfast Love Fundraiser, Oct. 11**

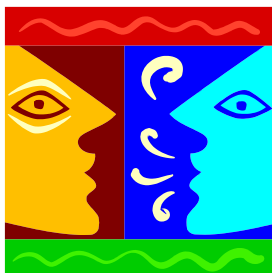
The annual fund raiser for Church of Steadfast Love, where Kristy, our supply pastor serves, will be Saturday October 11 in Issaquah. It will be hosted by Our Savior Lutheran Church at 745 Front St. S, Issaquah, WA, 98027, from 5:00-7:00. Mark your calendars now for an event that supports a diverse church community with four weekly services under the Alaska viaduct.

## **Sunday School/Rally Day!**

Sunday School meets from 9:30 -10:15. From 9:30 to 9:45 we will meet in the Chapel to sing together, share birthday celebrations, and participate in a special message associated with our worship readings. After the special message we will respond to the message through art, drama, games and finish with a snack.

This year's Sunday School is being organized by the parents of Sunday School age children with help from Pastor Wayne. If you would like more information about our Sunday School program please contact Pastor Wayne.

## **Sunday Forum**



All are welcome to participate in the SUNDAY FORUM. Come when your time permits. Different topics and subject matter is explored each week which will help in our lifelong learning venture in faith and inform us of our church activities.

## **Forum Coordinator Needed**

A forum coordinator is needed to arrange the forum each week. The forum is held from the second weekend in September through the first weekend in June, taking Christmas and Easter Sundays off. The main task is arranging topics each week and then finding speakers, videos, or other presenters to match the topic chosen. The Christian Education budget has some money to help with honoraria for speakers.

The past coordinator (Roger Anderson) will provide information on how the forum has operated and advice as requested. *Please contact Pastor Wayne Bacus if interested.*

## Faith and Film Returns this September

Tuesday, September 23, Fellowship Hall

### *Still Mine*



“Rules are rules,” we are told, from the time we are old enough to know the difference between the right way to do things and the wrong way to do things. But really, what does the word *rule* mean? The word rule is a noun and is always defined as a principle or regulation governing conduct, action, procedure, arrangement, etc. OK, so is there a rule of love?

The film *Still Mine* is an age-old love story that foregoes the Hallmark sentiment and gives the viewer a close-up vision of the ravages of dementia. Craig and Irene Morrison are well into their eighties and living on their 2000-acre farm in New Brunswick. It is apparent that Irene is slipping into that state of dementia where you can’t come back from. Unwilling to put her in a home and have someone else take care of her, Craig makes the decision to build a new accessible home next to the farm house with a view of the river. Never mind that Craig is 88 years old. He’s fit and capable of building that home, having learned from his father, a ship builder, all there is to know about wood and how to build.

The only thing standing in Craig’s way is the new county building inspector. Rules are rules. Codes are codes. Craig, like his father, is an absolute craftsman with wood. However, the building inspector insists Craig meet all the rules and regulations the county requires for new structures. Craig sees this as a waste of time, especially when time is short for Irene and her battle with dementia.

*Still Mine* isn’t about selfishness, it’s about Irene, while she’s still “my Irene.” When it comes to love there is no rule of love. Unless, of course, you think St. Paul made a rule of love when he wrote to the faithful at Corinth: *And now faith, hope, and love abide, these three; and the greatest of these is love.*—First Corinthians 13:13

We meet the fourth Tuesday of every month for appetizers at 6 PM, dinner at 6:30, and the conversation beginning around 7:15. All are welcome. We especially encourage newcomers and all film aficionados. We encourage everyone to see the film before we meet. However, it isn’t necessary to have seen the film to attend and enjoy.

## God's work. Our hands.

On Saturday, September 6, a group of folks from QALC will be going to the homes of some of our neighbors to help weed their gardens, mow their lawn, clean their gutters, wash their windows, and in general help them with yard and house chores. It is all part of our Evangelical Lutheran Church in America Churchwide Day of Service under the banner, "God's work. Our hands."

Here's a list of possible help we could offer, depending on manpower and skills available:

|                                    |   |   |  |
|------------------------------------|---|---|--|
| Mowing                             | Planting a garden                                   | Painting or sealing a fence or a deck                                     | Washing a car  |
| Raking                             | Removing or planting shrubs or trees                | Housecleaning--scrubbing floors, woodwork, bathrooms, sweeping, vacuuming | And, if someone has the skills, small plumbing repairs (like replacing faucet washers) or electrical work. |
| Weeding                            | Moving furniture or boxes from one place to another | Painting a room   |  |
| Pruning                            | Loading and hauling stuff to the dump               | Washing windows   |  |
| Mulching                           |   |   |  |
| Digging an area to create a garden |   |   |  |

At the *Jazz on the Grass* Wednesdays in August we will be polling our neighbors to discover who needs some help and how we can help them. Watch this space and the Sunday bulletin for how you can be a part of "God's work. Our hands."



### **LYONS (Lutheran Youth of North Seattle) NEWS:**

**High School Pizza Night at the Maiers' house this Wednesday!** Come enjoy delicious wood-fired pizza and great company! Wednesday August 27th, 6:30–8:30 PM. RSVP to Renée or Jon for directions.

**Important September dates to save** (more details to come):

September 7—**Kickoff for The Youth Gathering and AGAPE\* concert** at St. Andrew's Lutheran Church.

September 11—**LYONS parent and student information meeting** for all interested in attending **The Youth Gathering** next summer. 7:00 PM, location TBD.

September 13—**Amazing Race to End Homelessness**

September 14—**LYONS Kickoff Dinner!** 5:00 PM, location TBD.

September 21—**6th Grade Ice Cream Cruise**, 1:00 PM, meet at The Den.



Thanks to all who contributed so many wonderful items to St. Joseph's Baby Corner at the "No Work Event" and in the weeks after. Jessica, the site supervisor at the Baby Corner was delighted to

receive them and noted that just that morning she was wondering where she would find 7 washcloths for 7 layettes. And then our donation arrived!

St. Joseph's Baby Corner has merged with WestSide Baby which operates in West Seattle. The downtown location will remain in operation until further notice and rebranding may occur in the future but the operation remains pretty much the same with a staff eager to serve the newest citizens of King County.

Please continue to contribute gently used clothing for newborns and children through size 12, shoes through size 3, equipment (no drop side cribs or jogging strollers), hygiene items for moms, toys (especially board books), and of course diapers!!! If you have items too large to fit in the drawer in the narthex or have questions, call me at 206-282-2341, and I will try to help.

A message received from Jessica on August 21 indicates the greatest current need is for items size 0-3 months for boys and hygiene items. They are also looking for volunteers to sort donations, package diapers, fill orders, etc. Hours are flexible (morning or afternoon) Monday, Wednesday or Thursday between 9 and 3. Please contact Jessica at the Baby Corner at 206-726-1435 or [Jessica@westsidebaby.org](mailto:Jessica@westsidebaby.org) if you are interested.

Thanks again for your support!

—Ellen Hockman

206-282-2341 [kehockman@yahoo.com](mailto:kehockman@yahoo.com)

## **Lutheran World Relief School Kit and Personal Care Kit materials still needed for Fall Ingathering (Oct.31/Nov.1)**

*No more pencils, pens, erasers, combs, bath towels or toothbrushes are needed this fall.*

### ***The following items are included in each School Kit:***

Thirty **30-centimeter** rulers, or a ruler with centimeters on one side and inches on the other (note: not the soft rubber ones that roll up in heat, nor cheap plastic that warp).

Thirty **pencil sharpeners**—ensure that it works! The 10-cent specials usually do not; many for \$1+ have lids that don't stay tight.

Thirty blunt **scissors** (safety scissors with embedded steel blades work well).

Sixteen boxes of 16 or 24 **crayons**.

Twenty **70-sheet notebooks** of wide- or college-ruled paper approximately 8" x 10½"; NO loose-leaf paper.

### ***The following are included in each Personal Care Kit:***

Twenty five **metal nail clippers** (attached file optional).

Forty **bath-size bars (4 to 5 oz.)** of soap, any brand, in original wrapping; each kit needs 8-9oz (so 3 bars if each bar only 3 oz.).

## **HomeBase—Help Host Mary's Place Families at QALC, Oct. 7 to 21**

Mary's Place, a ministry of the Church of Mary Magdalene, is the only weekday drop-in day program for homeless women and formerly homeless women and their children in King County. But where do these women and children go at night? Queen Anne Lutheran is one of 17 local congregations (churches, synagogues, and mosques) who have committed to providing safe overnight shelter that allows women and their children to be housed together.

Queen Anne Lutheran has hosted Mary's Place families six times in the last three years, for one week at a time. In a leap of faith, we have committed to hosting for *two weeks*, from Tuesday evening, Oct. 7, through Tuesday morning, Oct. 21.

What does this mean? It means we need YOU!!

Please consider volunteering to help more than once during these two weeks. There are many ways you can help:

- Put up tents in the fellowship hall on Sunday, Oct. 5, after church, in preparation for our guests' arrival on Oct. 7
- Cook (or help cook or serve) dinners
- Sleep overnight at the church (comfy NEW beds!)
- Be an on-site "host" for a few hours on Saturday or Sunday;
- Take down tents or do laundry on Tuesday morning, Oct. 21

If you're considering volunteering for the first time and would like to be assigned to work with an experienced volunteer, let us know and we'll make sure that happens.

You can sign up online at <http://www.signupgenius.com/go/5080c44a4aa2bab9-marys1> or on the paper sign-up sheet in the Narthex. (Note: If you sign up on the paper sign-up sheet in the Narthex, your shift is not confirmed until you receive an email confirmation, so be sure to include your email address on the sign-up sheet.)

If you are not able to volunteer onsite but would like to support this critical ministry, you can make a cash donation earmarked for HomeBase expenses (like breakfast foods and diapers). You can drop it in the collection plate on any Sunday – just check "other" on the pew envelope and write in "HomeBase."

Questions? Email [marysplaceqalc@gmail.com](mailto:marysplaceqalc@gmail.com) or contact one of the HomeBase coordinators: Pam McIlroy (206-409-4053); Sophie Pritchard (206-288-9435); or Peggy Morgan (206-282-1369).





**September**—a time of new beginnings and this year a time of endings as we get ready to say “goodbye” to Pastor Wayne and Jackie. Many of our circles took the summer off—vacations interfered as well as a few picnics.

The new leader guides for the fall Bible Study “Transforming Life and Faith” are in the Library. Our September 2014 Bible Study: “Always Changing—Our Lives and Our Faith Journeys” include a series of transformations.

Download **the first session of our nine-month study** for free. **See videos**

for each session. See more at: <http://www.womenoftheelca.org/#sthash.NtvePjJv.dpuf>

It looked like it was a great “**almost No Work event.**” Sheets were dyed and some are already on the back of quilts. It reminds me of a saying we use to have at QALC - “*Lutheran women have more fun.*” Thanks to Sallie Wilson, Cathy Unseth and Pat Sobek for making this a very successful event!



Karen McCullough and I had a great time at the **Triennial Gathering** in Charlotte,



North Carolina. I highly recommend the next Triennial Gathering, in 3 years time, when it will be in Minneapolis. Highlights of this Triennial included guest speakers like Rev. Becca Stevens (Founder of Thistle Farms, a residential program and social enterprise of women who have survived prostitution, trafficking, and addiction.

Check out Thistle Farms websites for great products. They were sold out at the convention)—and The Rev. Susan Sparks (Pastor, author and comic—Rev. Sparks wants you to reconnect with your inherent ability to laugh and satisfy the part of your humanity that yearns for joy.) Once again we were busy taking pictures with the Presiding Bishop (you may watch Bishop Eaton’s address to the convention on line <http://www.womenoftheelca.org>), walking the 5K run walk, attending workshops, and seeing friends. Karen took the time to watch the films “I Believe You,” “Harvest of Empire” and “Miss Representation.” She highly recommends we watch them.

WELCA has copies available for each Synod. The convention link is

<http://www.womenoftheelca.org/ninth-triennial-convention-pages-137.php>

**Check out the NW WA Women's Retreat!** Warm Beach is a great place to walk on the beach, meditate, and share time with others. **Registration forms** will be in the Narthex and on our church website.

## **NW WA Synod—FALL RETREAT October 3-4, 2014**

Warm Beach Christian Camp and  
Conference Center  
20800 Marine Drive, Stanwood, WA  
**Theme: Living Christ's Light**

Matthew 5:14 *"You are the light of the world.  
A city on a hill cannot be hidden."*

A two-day event which includes choices of crafting,  
singing, spiritual growth, fellowship, worship, and FUN.



*Warm Beach is a great place to walk on  
the beach, meditate, as well as sharing  
time with others.*

**Cost:** One Night (Friday) \$125 w/ 3 Meals (Scholarship funds available through the Synod)

**Registration Forms:** Available in the Narthex or on a link from our website.

**Speaker:** Kay Solvik

Kay is a Washington native married 35 years to Keven whom she met at Lutheran Bible Institute in Seattle. They spent 18 years of his military career moving around the world before settling back in Washington to be near family. She currently works in customer support at Logos Bible Software in Bellingham. Kay loves humor, stories, and exploring God's Word with women, making it real and relevant to our everyday lives.

**Music:** Led by Nan Beth Walton from Faith Lutheran in Seattle.

**Worship:** Led by Julie Josund, Pastor at Edmonds Lutheran Church

**Retreat Offering:** The offering received at this event will be split two ways. 50% will be sent to the church-wide Women of the ELCA to support national programs and 50% will be given to The Josephine Good Sam Fund.

---

**Blessing of the quilts**, kits, and all the hands that help will be October 26. Following the 10:30 service we will once again, box the kits and quilts, label them, and weigh them. Our Boxing coordinator this year will be Chloe Jones. Willing hands of all ages are welcome (and appreciated).  
**Wanted: Large size (16x16x24) moving boxes**—should be able to hold 3 to 4 quilts.

Come join us at a circle/small group this month, Sewing and Service or PDQ's. (see next page)

Yours in Christ,  
Your Coordinating Committee

## Women of QALC: Ongoing Groups



*Come join us at a circle this month!*

Please check with the circle leaders if you would like to attend a circle.

**Julia Circle** 1<sup>st</sup> Monday of the month at 7:00 PM. Contact Georgeanne Robertson or Candy Mathes.

**The Lutherettes:** 3rd Monday of the month at 6:30 PM.

Contact Allyson Fredericksen to find out what we have in store for this month!

**Northern Lights:** 2<sup>nd</sup> Monday of the month at 7:00 PM. Contact Dolly Smith.

**Katie's Table:** 3rd Saturday at 9 AM at Luther's Table in Renton. For location & questions please contact Joan Crummett at 206-261-4448.

**Sewing and Service:** Wednesdays. Contact Lois Unseth or Shirley Flory.

**Sunshiner's Circle:** Usually meets 4th Wednesday at noon.

**PDQ's (Pizza, Damsels, and Quilts):** 3rd Tuesday of most months, sometime after 5:30 PM. Light supper provided. Contact Karen McCullough.



**Wanted:  
A working serger.** One of the things we make in Sewing and Service are t-shirts out of onesies and flannel blankets. The women of Sewing and Service would love to have a WORKING serger to hem the edges of the t-shirts and

blankets. We would also be delighted if someone would come help do the actual serging.

**Volunteering With the Queen Anne Food Bank** is a great way to give back, meet new people, and learn something new! Please email [jasmine@qafb.org](mailto:jasmine@qafb.org) or call (206) 216-4102 for more information. We are currently looking for volunteers to help with sandwich making, food preparation, sorting, office work, and donation pick up. Volunteers would be working closely with our new Operations Coordinator, **Emily Meade**, who was a part of the LVC group that Queen Anne Lutheran hosted this year.

**Sandwich Prep**, Wednesdays from 7 AM to 8:30 AM, or on call Monday-Friday

**General Help**, Tuesdays, Wednesdays, and/or Fridays 9 AM -12 PM (Or on Call)

**Admin Help**, Flexible within a 9 am-2 pm window

**Third Friday Donation Pick Up**, 11:15 AM - 1:30 PM; Extra wheels and strong arms needed.

## Cleaning Up?

**Clothes for The Cause** is a Seattle company that collects unwanted items and turns them into cash for nonprofit organizations. Instead of becoming trash, your items are re-worn, re-purposed or recycled, and **you** help an orphan with no place else to turn for assistance.

**THANK YOU! We will take donations of:**

- **CLOTHING** any kind/any condition
- **SHOES** any kind/any condition
- **PURSES, BELTS** synthetic/leather
- **TOWELS**--bath, kitchen, rags
- **SHEETS, BLANKETS, QUILTS, BEDSPREADS**
- **CURTAINS/DRAPERY**
- **THROW RUGS** (not carpet)
- **TABLECLOTHS, PLACEMATS**
- **(NO glass, breakables, electronics or anything wet.)**

**Collection Dates:** August 1-September 12, in Issaquah.

**Questions?** Contact Julie at [Julien@songeaskids.org](mailto:Julien@songeaskids.org) or 469-235-7589.

## *Bishop's Message*



### **The Liturgy of September**

*by Kirby Unti, NWWA Synod Bishop*

September is upon us again and I have yet to transition into this month without developing a knot in my stomach. This is where fear takes up residency in my life. I know the source of this fear. It dates all the way back to the first day of school. I never slept well the night before - worried about whether I would like my teacher, who would I be seated next to, did I know my times tables, and did I have the right clothes to wear? This fear was also dosed with a certain level of excitement and anticipation of what the new year might hold.

When it came time to send our own kids off to school, I relived these same memories as I watched them gear up for the transition. One daughter slept in the new clothes she was going to wear on the first day and was up at O-Dark-Thirty ready to go. Another daughter was sorely disappointed when we woke her up for the second day of kindergarten. "You mean I have to go again?"

Two of my daughters are now public school teachers. I watch them go through their own version of fear and anticipation each year. Little do the students know that their teachers share some of their same feelings about starting a new year.

We live two blocks from the elementary school our daughters attended and where our one daughter now teaches. I watch the kids decked out in their new clothes and bright backpacks, chasing after one another as they participate in this annual trek back to school. I watch the school buses whiz by with kids staring out the windows knowing that some are as scared as I was.

We do not acknowledge the first day of school in our liturgical calendars. Perhaps it does not rise to the proper level of holiness. I wish we did because for me it captures a good deal of what it means to be human. It is about transition and being called to trust the future. It is about facing our fears so that we can stretch and grow. It is about letting go, being vulnerable and discovering new horizons. God never allows us to become a settled people. Summer vacation always comes to an end.

I must confess I enter into my second year serving the office of bishop with many of the same feelings that I had as child gearing up for another year of school. It comes with that same mixture of fear, excitement and anticipation. Friends, for me this is the pathway of faith. It is the constant discovery that future is in God and means us well.

*Lord God, you have called your servants to ventures of which we cannot see the ending, by paths as yet untrodden, through perils unknown. Give us faith to go out with good courage, not knowing where we go, but only that your hand is leading us and your love supporting us; through Jesus Christ our Lord. Amen*



# the Last WORD

## Blame It on the Lutherans

One of my favorite movie lines comes from Clint Eastwood in his film, *Grand Torino*. Eastwood plays the recently widowed Walt Kowalski, who has lived all his life in a working class neighborhood in Detroit. Just about everything annoys him family, religion, politics but mostly the fact that his neighborhood is changing. When the Lor family, of ethnic Hmong\* descent, moves in next-door Walt makes it his sacred duty as an American and a veteran of the Korean War, to un-welcome them at every turn. However, the relationship between neighbors changes when Walt rescues the teenage son from a Vietnamese gang. In a kind of classic “the enemy of my enemy is my friend,” the icy relationship between Walt and his Hmong neighbors begins to thaw. The teenage daughter, Sue, who is the only one who speaks fluent English, is his interpreter for all things Hmong.

\*Hmong people come from different parts of Laos and Thailand and China.

I watch a lot of films and I can tell you it is rare when “Lutherans” are mentioned in a film. Here is the exchange between Sue and Walt that contains one of my favorite movie lines.

**WALT**

Then why are you in my neighborhood, instead of back there?

**SUE**

It's a Vietnam thing. We fought on your side and when America quit, the Communists starting killing the Hmong, so we came over here.

Walt is quiet for few seconds.

**WALT**

Why'd you pick the Midwest, for Christ's sake? There's snow on the ground near half the year. Jungle people on the frozen tundra?

**SUE**

Hill people. We were hill people, not jungle people. Boo-ga, boo-ga, boo-ga.

**WALT**

Whatever.

**SUE**

Blame the Lutherans. They brought us here.

**WALT**

Everybody blames the Lutherans.

### **Blame it on the Lutherans.**

It's true, "The Lutherans" did bring the Hmong people to the United States. *The Lutherans became the primary missionary organizations to aid Hmong immigration to the United States. Lutherans welcomed the Hmong in states where the Lutheran Church is the strongest, such as Minnesota and Wisconsin. Initially, the Hmong, who had lived in rural, agricultural areas, had trouble adapting to urban America. To meet their needs, the Lutheran Immigration and Refugee Service, or LIRS, increased its staff, helped to develop federal policies and worked with state assistance programs. From 1990 to 1994, the State Department recognized LIRS as the best national refugee-resettlement program in the nation.\**

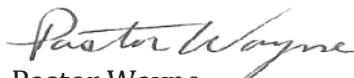
Vietnamese, Laotians, Cambodians, Estonians, Slovaks, Germans, and the list just goes on of refugees the Lutheran Church has resettled in the United States. It makes me wonder why our leadership on both sides of the aisle in that other Washington haven't turned to the Lutherans to help solve the current immigration problem with our neighbors in Mexico and Central America.

Seems to me Walt had it right: "Everybody blames the Lutherans." So if we are already getting the blame why not step in and resolve the current immigration problem the way we have always done it in the past. There is no reason to believe we wouldn't be as successful resettling our neighbors to the south as we were with refugees from South East Asia.

I urge you to go to the LIRS website (<http://blog.lirs.org/migrant-mothers-courageous-story-moves-lutherans-to-action-state-action-alert/>) and read how Lutheran congregations in the Southwest California Synod of the ELCA are already mobilizing to assist those fleeing the violence in Mexico and Central America.

Republicans and others frequently complain that Americans rely too much on the federal government to solve our problems. Maybe immigration isn't as much a problem as it is an opportunity for faith-based organizations to take the lead in resolving the pressing issue of immigration. After all, we Lutherans have a proven track record for resettling immigrants and refugees. Perhaps this is a God given "opportunity" for demonstrating the faith we confess. And besides, as Walt would say, "Everyone blames it on the Lutherans,"

Wearing that blame like a badge of honor,

  
Pastor Wayne

\*The Lutheran Church and the Hmong, by John Peterson; Demand Media  
<http://people.opposingviews.com/lutheran-church-hmong-4233.html>

# SERVING IN SEPTEMBER

## Ushers: 10:30 a.m.

7 Rich Mathes  
14 TBD  
21 Jim Margard  
28 TBD

## Offering Counters

Sharon Greenwood and Vicke Pugil

## 8:00 Lectors

7 Jacqui Darroch  
14 Jan Olson  
21 Dan Squires  
28 Harold Robertson

## 8:00 Communion Servers

7 Jacqui Darroch  
14 Linda Olson  
21 Deb Squires  
28 Georganne Robertson

## 10:30 Assisting Minister

7 Meg Shaw  
14 Jacqui Darroch  
21 Renée Dudley  
28 Carol Ann Davis

## Altar Guild:

Marjorie Dowd, Katherine Thomas, Lois Unseth

## Sunday Coffee Hosts: (8:00 a.m.)

7 Katherine Knorr  
14 TBD  
21 TBD  
18 TBD

## Sunday Coffee Hosts: (10:30 a.m.)

7 Louie family  
14 TBD  
21 TBD  
28 TBD

## Flowers on the Altar

7 Jean & Marc Oplinger  
14 Pat & Don Sobeck  
21 Candy & Rich Mathes  
28 Marjorie Dowd

## Staff:

|                     |                          |
|---------------------|--------------------------|
| Pastor              | Rev. Wayne E. Bacus      |
| Deaconess Intern    | Sister Clare Josef-Maier |
| Campus Pastor-U.W.  | Rev. Elizabeth Rawlings  |
| Cantor              | Arletta Anderson         |
| Parish Assistant    | Barbara Bash             |
| Missionary to China | Rev. Dorcas Wang         |
| LYONS               | Jon Ross                 |
| LYONS               | Renée Dudley             |
| Sexton              | Don Boelter              |

## Deadline for the October Quill is Tuesday, September 23<sup>rd</sup>

### **E-MAIL ADDRESSES for QAELC STAFF:**

|                         |  |
|-------------------------|--|
| Pastor Wayne Bacus      | <a href="mailto:pastor@queenannelutheran.org">pastor@queenannelutheran.org</a> |
| Deaconess Intern        | <a href="mailto:clare.alyce@gmail.com">clare.alyce@gmail.com</a>               |
| Parish Administrator    | <a href="mailto:admin@queenannelutheran.org">admin@queenannelutheran.org</a>   |
| Cantor Arletta Anderson | <a href="mailto:ajp724@comcast.net">ajp724@comcast.net</a>                     |
| Don Boelter             | <a href="mailto:donboelter@gmail.com">donboelter@gmail.com</a>                 |

## September 2014

| Sunday   | Monday   | Tuesday   | Wednesday   | Thursday  | Friday    | Saturday  |
|--|--|---|---|---|-----------|---|
|  | <b>1</b><br>6:30pm Yoga<br>7:00pm 12-Step OA<br>7:00pm Julia Circle    | <b>2</b><br>7:00pm Executive committee  | <b>3</b><br>9:15am Sewing and Service<br>11:00am Staff Meeting<br>8:00pm Alanon<br>8:00pm A.A.<br>8:00pm Alateen  | <b>4</b><br>7:00pm Chancel choir                                | <b>5</b>  | <b>6</b><br>10:30am Alanon Women  |
| <b>7</b><br>8:00am Worship Service<br>9:30am Sunday School<br>10:30am Worship Service  | <b>8</b><br>6:30pm Yoga<br>7:00pm Northern Lights<br>7:00pm 12-Step OA | <b>9</b><br>12:00pm Lunch & Learn<br>6:00pm Handbell Choir<br>7:00pm Church council                   | <b>10</b><br>9:15am Sewing and Service<br>11:00am Staff Meeting<br>5:30pm Shalom Choir<br>6:15pm Cherub Choir<br>8:00pm A.A.<br>8:00pm Alanon<br>8:00pm Alateen | <b>11</b><br>6:00pm Endowment Committee<br>7:00pm Chancel choir | <b>12</b> | <b>13</b><br>8:30am Men's Group<br>10:30am Alanon Women<br>12:30pm Handbell Choir   |
| <b>14</b><br>8:00am Worship Service<br>9:30am Sunday School<br>10:30am Worship Service<br>12:00pm Congregational Meeting                     | <b>15</b><br>6:30pm Yoga<br>6:30pm Lutherettes<br>7:00pm 12-Step OA    | <b>16</b><br>12:00pm Lunch & Learn<br>5:00pm PDQ<br>5:30pm Worship and Music<br>7:00pm Handbell Choir | <b>17</b><br>9:15am Sewing and Service<br>11:00am Staff Meeting<br>5:30pm Shalom Choir<br>6:15pm Cherub Choir<br>8:00pm Alateen<br>8:00pm A.A.<br>8:00pm Alanon | <b>18</b><br>7:00pm Chancel choir                               | <b>19</b> | <b>20</b><br>9:00am Katie's Table<br>10:30am Alanon Women<br>12:30pm Handbell Choir |
| <b>21</b><br>8:00am Worship Service<br>9:30am Handbell Choir<br>9:30am Sunday School<br>10:30am Worship Service<br>11:45am Newcomers' Coffee | <b>22</b><br>6:30pm Yoga<br>7:00pm QA Book Group<br>7:00pm 12-Step OA  | <b>23</b><br>12:00pm Sunshiners<br>12:00pm Lunch & Learn<br>6:00pm Faith and Film                     | <b>24</b><br>9:15am Sewing and Service<br>11:00am Staff Meeting<br>5:30pm Shalom Choir<br>6:15pm Cherub Choir<br>8:00pm A.A.<br>8:00pm Alanon<br>8:00pm Alateen | <b>25</b><br>5:30pm Christian Education<br>7:00pm Chancel choir | <b>26</b> | <b>27</b><br>10:30am Alanon Women   |
| <b>28</b><br>8:00am Worship Service<br>9:30am Sunday School<br>10:30am Worship Service   | <b>29</b><br>6:30pm Yoga<br>7:00pm 12-Step OA                          | <b>30</b><br>12:00pm Lunch & Learn  |   |   |           |   |