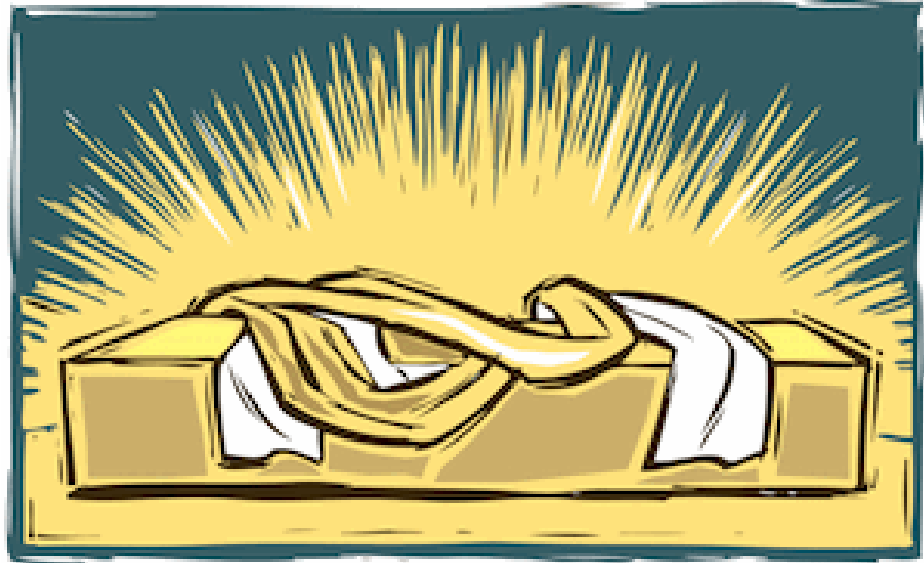


The Quill

APRIL 2014

Inside this issue

| | |
|----------------------------------|-------|
| Holy Week and Easter Schedule | 1-3 |
| From the Cantor | 4 |
| JAM, Faith and Film | 5 |
| PLC & Lyons | 6 |
| Announcements, Birthdays, | 7-8 |
| Forum, Easter Breakfast | 9 |
| HomeBase | 10 |
| Lutheran World Relief | 11 |
| Israel Palestine and Jordan Trip | 12 |
| The Last Word | 13-14 |
| Serving in April | 15 |
| April Calendar | 16 |



EASTER

The Quill

A P R I L 2014

Queen Anne Evangelical Lutheran Church
Called to Proclaim God's Love in Christ to Every Person
2400 8th Avenue West Seattle, WA 98119
206.284.1960
www.queenannelutheran.org

SUNDAY WORSHIP 8:00 a.m. & 10:30 a.m.
SUNDAY SCHOOL 9:30 a.m. CONFIRMATION 9:15 a.m. ADULT FORUM 9:15 a.m.

HOLY WEEK AND EASTER AT QUEEN ANNE LUTHERAN CHURCH

PALM/PASSION SUNDAY

April 13, 8:00 and 10:30 a.m.



Our Holy Week observance begins with the re-enactment of Jesus' triumphal entry into Jerusalem, riding on the colt of an ass, and those along the parade route throwing palm branches in his way. However, before the day is done we will find ourselves going from cheers to jeers to tears as we hear the evangelist St. Matthew's account of the Passion of our Lord read dramatically.

MAUNDY THURSDAY

April 17 11:00 a.m. and 7:30 p.m.

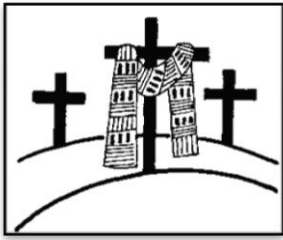
This is the day we remember how our Lord rose from the table in the Upper Room, "laid aside his outer robe and tied a towel around himself. Then he poured water into a basin and began to wash the disciples' feet and wiped them with the towel that was tied around him." In years past we have re-enacted the foot washing as part of this solemn service. This year, however, we will be washing hands instead of feet with the baptismal font as our basin. The washing of each others' hands accents our larger Churchwide theme **God's Work, Our Hands** as a way to love one another as Christ loved us.



In both the morning and evening service a solemn service of Holy Communion will be celebrated. At the conclusion of the service, the altar and other appointments will be stripped away, as a symbolic enactment of Christ being stripped of his power and being handed over to his captors.

GOOD FRIDAY

April 18, 11:00 a.m. and 7:30 p.m.



At the morning service The Stations of the Cross will be observed. This service has as its focus the last journey of Jesus Christ from Pilate's palace to Jesus' entombment. We will make our Good Friday *pilgrimage* from station to station, praying, listening, singing, and seeing the love of God for us in the Savior Jesus Christ.

At the evening service we will observe the Office of Tenebrae with *The Words from the Cross* by Paul Fetler with the Chancel Choir, Readers, and Pipe Organ.

THE GREAT EASTER VIGIL

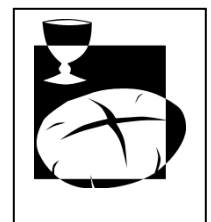
Saturday, April 19, 7:30 p.m.

The Vigil begins with a **Service of Light**. In this service we see light in a very wild form: a bonfire is lit outside the church. From this fire we will light the new paschal candle, the candle that stands next to the baptismal font for the rest of the year. The light of this candle will lead us into the darkened worship space as we sing the *Exultet*, a song praising God for the gifts of light, life, and resurrection.



Following the *Exultet*, five Old Testament readings will be proclaimed in the **Service of the Word**. These readings remind us of the saving acts of God, preparing us for the ultimate salvation we find in Holy Baptism and the promise of the resurrection to eternal life. After hearing the Word we process to the baptismal font for the **Service of Holy Baptism**. This service is held whether or not we have a person to baptize. If there is no candidate, the congregation participates in a sprinkling rite that reminds us of our own baptism.

Finally, we turn from the font and follow the sound of *alleluias*, as we proclaim the Easter Gospel and songs of Christ's triumph over death. Banners and flowers adorn our celebration in the **Service of Holy Communion**. We complete this Vigil by gathering as one body at the table of God, eating and drinking the gifts of life.



The Vigil will be followed by a joyful reception, full of sweets and fats appropriate to the Easter season!

Easter
April 20, 8:00 and 10:30 a.m.



The resurrection of our Lord is celebrated with all the wonderful sounds and colors fitting this great and glorious feast. The flowered Easter cross, the glorious music, and the return to singing the *alleluias* will bring a brightness and color to our worship worthy of Christ – “for the Lamb who was slain has begun his reign!” Alleluia!



Join us for an Easter Breakfast between the two worship services
From 9:00 – 10:00 a.m.



LUNCH & LEARN BIBLE STUDY

The Gospel of John

BYOB (bring your own bag lunch)

Tuesdays April 1 and April 8

@ Noon – Conference Room

The Gospel of John is a gospel set apart from Matthew, Mark, and Luke. John's Gospel has no parables. John's way of telling the story of Jesus is unique. John uses the *I Am* statements of Jesus to reveal who Jesus is – the Son of God, the Savior of the world. Join us as we look at two of Jesus' *I AM* statements up close and personal: *I Am the light of the world* and *I Am the resurrection and the life*.

From the Cantor . . .

All of us have people in our lives we admire and observe; some have become for us role models, mentors, or guides. Even if we have never met them, they still hold a place of honor for us. One such person in my life came to Seattle in March and I was privileged to meet Alice Parker, personally thanking her for the inspiration she has been for me over the years.

Alice Parker was a keynote speaker at the American Choral Directors Northwest Division Conference (includes Alaska, Idaho, Montana, Oregon, Washington, and Wyoming) held downtown Seattle the second week of March. My continuing education benefit from QALC supported my attendance. Thank you!



Parker was born in Boston, Massachusetts in 1925. She began composing early, and wrote her first orchestral score while still in high school. She graduated from Smith College with a major in music performance and composition, and then received her master's degree from the Juilliard School where she studied choral conducting with Robert Shaw.

Her life-work has been in choral and vocal music, combining composing, conducting, and teaching in a creative balance. Her arrangements with Robert Shaw of folksongs, hymns, and spirituals form an enduring repertoire for choruses all around the world. She continues composing in many forms, from operas to cantatas, sacred anthems to secular dances, song cycles to string quartets.

Now a resident of western Massachusetts, Parker has published books on melodic styles, choral improvisation, and *Good Singing in Church*. Her detailed analysis, *The Anatomy of Melody*, was released in 2006. Five videos have appeared, showing her work with hymns and folksongs. She has been recognized by Chorus America, the American Guild of Organists, the American Choral Directors Association, The Hymn Society, and Choral Arts New England for her lifetime contributions to choral music. She is the recipient of six honorary doctorates and the Smith College Medal.

I am a devotee of folk songs from many cultures, as well as the rediscovery of Christian hymns from many centuries. Melodies which last teach me about the nature of melody itself, and I never tire of composing, arranging, conducting, and teaching from these ever-flowing sources. ~ Alice Parker

I look forward to worshipping with you, singing melodies together.

*Arletta Anderson, Cantor
and Associate in Ministry
ajp724@comcast.net ~ 425.355.8776*

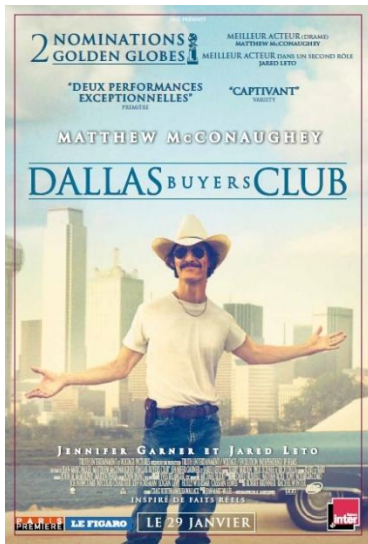


JAM
 Midweek Lenten Wednesday Worship
 April: 2nd & 9th
Mornings 10:30 A.M. Chapel
Evenings (JAM)

| | |
|-----------------------------------|-------------------------|
| Shalom Choir | 5:30 - 6:10 P.M. |
| Meal | 6:00 – 6:45 P.M. |
| Cherub Choir | 6:15 – 6:45 P.M. |
| Conversation & Worship | 6:45 – 7:15 P.M. |

JAM is on Easter Break
 Returns Wednesday, May 7

JAM is our acronym for Jibe At Midweek. Jibe is a sailing term meaning to change direction. This fall we are encouraging households in the congregation to **Jibe**, that is change direction on Wednesday nights and sail into the harbor of QALC to nourish both body and soul. Every Wednesday evening we will be serving delicious dinners for the whole family. Dinner is followed by engaging conversations to help you grow your faith.



Faith and Film For April
Tuesday, April 29th (This is the FIFTH Tuesday)
Narthex/Fellowship Hall

Dallas Buyers Club

Let the one who is without sin among you be the first to cast a stone at her. John 8:7

In 1985 Dallas, electrician and hustler Ron Woodroof is diagnosed with AIDS and given 30 days to live. His friends and family shun him, his boss fires him and he is eventually evicted from his home. An empathetic doctor, Eve Saks, tells him about an experimental drug that is thought to prolong the life of AIDS sufferers. Problem is the Food and Drug Administration has not given this experimental drug its blessing. Without FDA approval, the drug cannot be obtained in the USA. It is, however, available in Mexico. Ron discovers a unique way to work

around the FDA by establishing a network of buyers (AIDS sufferers). If he has a Buyers Club like Costco or Sam's Club he can legally sell the drug to those who need it. Of course, he has to figure out how to smuggle the drug into the country from Mexico, Japan, and China etc. Ron works around the system to help AIDS patients get the medication they need.

If politics make for strange bedfellows issues of justice can do the same. For Ron it is a matter of justice. In helping others who are dying from AIDS: gay men, transgenders, intravenous drug users, prostitutes, etc. Ron not only develops an empathy for them, he becomes a crusader for justice for them, too.

**We meet the fourth Tuesday of every month (except this month we are meeting the fifth Tuesday) for appetizers at 6 P.M., dinner at 6:30, and the conversation beginning around 7:15. We meet in the Fellowship Hall. All are welcome. We especially encourage newcomers and all film aficionados.*



**Pacific Lutheran University
School of Arts and
Communication/Department
of Music**

2014 Spring Tour

CHORALE

Conducted by Dr. Nathan Frank, Acting Associate Director
of Choral Activities, conducts the program

**Friday April 4th 7:30 pm
Ballard First Lutheran
2006 NW 65th St. Seattle, WA 98117
Free admission**

LYONS 2014 Dinner Theater!

LUTHER'S ELEVEN

TO

SHOW DATES

**Friday, May 2 - 7:00pm
Saturday, May 3 - 7:00pm
Sunday, May 4 - 2:00pm
Friday, May 9 - 7:00pm
Saturday, May 10 - 7:00pm
Sunday, May 11 - 2:00pm**

TICKET PRICES

7:00 Dinner Shows

Adults: \$20; Ages 5-18 & 65+: \$15

2:00 Dessert Matinee

Adults: \$15; Ages 5-18 & 65+: \$10

Children under 5: Free

Order your tickets now for this hilarious musical production! Proceeds support the LYONS high school summer trip. Purchase tickets online at www.roaringlyons.org or call **206.706.5997**

ALL SHOWS AT
Ballard First Lutheran Church
2006 65th St. NW
Seattle, WA 98117



It's time! Come join our cooking Class - **Cooking with Storm!** Storm Hodge is our Wednesday evening chef for JAM. Watch for more information on this delightful class that's scheduled for **Saturday, April 5 at 4:00pm**

This gourmet cooking class will delight ALL your senses. We will begin cooking in the late afternoon and finish after EATING the scrumptious dinner we have all prepared. *Cost will be \$25.00 for one or \$45.00 for two.* So bring a friend and learn Storm's secrets in the kitchen! While QALCW is sponsoring this event, it is open to all church members and friends! Sign up in Narthex!

April 27th - Blessing of the Quilts Sunday. Help is needed to box the quilts **AFTER the 10:30 service for the LWR Loading on May 1 & 2.** Our Sewing and Service ladies find the weight of the quilts is very heavy when it comes to boxing all of them at one time as well as handling of all the kit boxes. Each quilt weighs between 3 to 8 pounds each. They feel it is time to ask for help from our younger and more able body church members. The quilts will need to be folded and placed into boxes and the boxes weighed. The weight and number of quilts will be marked on each box. The boxes and packing tape will be available.

The Women's Bible Study this month has us studying Rizpah, a vigilant mourner. "Then Rizpah the daughter of Aiah took sackcloth, and spread it on a rock for herself, from the beginning of harvest until rain fell on them from

the heavens; she did not allow the birds of the air to come on the bodies day by day, or the wild animals by night." **2 Sam 21:10** Rizpah a concubine of King Saul's, protects the dead bodies of her two sons and is an example to King David of the need to respect the dead. Our Bible readings include Psalm 88; 2 Samuel 21; and John 19. God's grace will carry us when the way is hard. Come join a circle this month!

Come join us in one of our small groups (Circles) this month for interesting discussions.

The Women's Committee
Candy, Sallie, Pat, Jacqui and Sophie

Women of QALC Ongoing Groups



Come join us at a circle this month.

The Lutherettes: 3rd Monday of the month at 6:30pm. Contact Allyson Fredericksen to find out what we have in store for this month!

Northern Lights: April 21st at 7:00 p.m. Contact Dolly Smith.

Katie's Table: 1st Saturday April 5th at 9 a.m. at Luther's Table in Renton. Contact Sallie Wilson.

Sewing and Service: Wednesdays. Contact Lois Unseth or Shirley Flory.

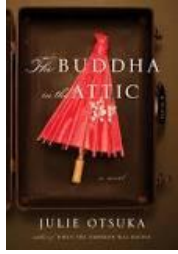
Sunshiner's Circle: Usually 4th Wednesday at Noon.

PDQ's (Pizza, Damsels, and): 3rd Tuesday of most months, sometime after 5pm. Light supper provided. Contact Karen McCullough.

ANNOUNCEMENTS

QALC Book Group meets April 26 at 7 p.m. in the Narthex. This month, we are reading The Buddha in the Attic by Julie Otsuka.

The Buddha in the Attic is a novel written by American author Julie Otsuka about Japanese picture brides immigrating to America in the early 1900s. *All are welcome to come join the discussion!*



Queen Anne Men's Ministry: (For Men of all ages)

April 19th 8:30am. Discussion will continue on our personal use of prayer. Healthy snacks will be provided. Discussion will end by 9:00 so we can setup for Easter breakfast.

April 20th – Easter Breakfast from 9am to 10am. We will cook pancakes, meat at church; egg dishes need to be brought. Sign-up sheets will be posted.

April 27th after 2nd service – we need some strong arms, including youth, to help box the quilts.

May 2/3 - LWR Spring Ingathering at Our Redeemers' Lutheran, signing up for a two hour shift. Friday is 8am-4pm; Saturday 8am-noon.

June 29th – Congregational Picnic lunch after 2nd service. Please mark your calendars now . Sign-up sheets for cooks or food items will be posted in May.

Rich Mathes,
Richard Crummett



*Community Lunch on Capitol Hill –
Annual Spring Fundraiser*

A sit down dinner prepared by chefs from great Capitol Hill restaurants. Wine, beer and soft drinks included.

Sunday, April 27th, 5-8pm

All Pilgrims Church Broadway at Republican

509 10th Ave E. Seattle, WA 98102

www.communitylunch.org or call 206-972-2524

Tickets: \$50 per person

Seats are limited – RSVP by Sunday, April 20th

APRIL BIRTHDAYS

- 1 Bernie Hoover
- 3 Frank Klepser
- 6 Grace Manahan
- 8 Kirsten Erickson
- 9 Lee Duty
- 10 Marc Oplinger
Karen Storey
Tyler Glover
- 16 Frank Gieske
Annika Lundsgaard
- 17 David Hatlen
- 19 Alice Rosenthal
- 20 Annette Lind
- 21 Roger Cruise
- 22 Julie Lubke
- 23 Frank Albano
- 24 Dotty Anderson
- 26 Chris Rubright
- 27 Patrick Manahan
- 30 Ann Marie Stark
Lisa Kjaer-Schade



THANK YOU

QALC received Thank Yous from the following organizations:

| | |
|----------------------------|------------|
| Mary's Place | \$300.00 |
| Lutheran Peace Fellowship | \$150.00 |
| Queen Anne Helpline | \$300.00 |
| Lutheran World Relief | \$100.00 |
| Compass Housing | \$300.00 |
| Operation Bootstrap Africa | \$1,577.00 |

April Forum

All are welcome to participate in the forum. Come when your time permits. Topics are explored each week which will help in our lifelong learning venture in faith and inform us of our congregational activities.

April 6 World Hunger Event.
Hunger and Favor: Looking through Good News

April 13 Queen Anne Learning in the Middle East
The focus today is to share the trip that members of Queen Anne took to Israel, Palestine, and Jordan. A group of 13 traveled for two weeks and learned about the geography, archaeology, history and the current state of the situation in Israel and Palestine. Also, the group learned about the Lutheran Church in Jordan and the Holy Land, visiting several churches, hospitals, and schools.

April 20 Easter – no forum

April 27 Lutheran Youth Of North Seattle (LYONS) – update on our youth ministry

April 20th EASTER BREAKFAST

The Men's Group has once again taken on the challenge of being in charge of the Easter Brunch - but EVERYONE may help! Help is needed setting up, decorating (table decorations), and cleaning up. Pancakes will be served along with your food contributions - egg dishes or pastries.

If you would like to help, please sign up in the Narthex or contact Rich Mathes 206- 384-1183.





Queen Anne Lutheran to be HomeBase for the Women and Children of Mary's Place April 22 to 29, 2014

Mary's Place, a ministry of the Church of Mary Magdalene, is the only weekday drop-in day program for homeless women and formerly homeless women and their children in King County. But where do these women and children go at night? Queen Anne Lutheran is one of 17 local congregations (churches, synagogues, and mosque) who have committed to providing safe overnight shelter that allows women and their children to be housed together. These congregations host families overnight for a week or two at a time. **Our next week to host will be Tuesday evening, April 22, through Tuesday morning, April 29.**

Please consider volunteering to help during this week. Volunteers are needed to put up tents in the fellowship hall on Monday evening, April 21 (to provide some privacy for families while sleeping); to cook (or help cook or serve) dinners; to sleep overnight at the church; to be an on-site "host" for a few hours on Saturday and Sunday; and to take down tents and do laundry on Tuesday morning, April 29. If you're considering volunteering for the first time and would like to be assigned to work with an experienced volunteer, let us know and we'll make sure that happens.

You can sign up online at <http://www.signupgenius.com/go/5080C44A4AA2BAB9-hosting1> or on the sign-up sheet in the Narthex.

Training for first-time volunteers (mandatory) has been scheduled in the Fellowship Hall after the 10:30 service on Sunday, April 13. All first-time volunteers (or past volunteers who have not done so for two years) must fill out a Washington State Patrol background check form.

If you are not able to volunteer onsite but would like to support this critical ministry, you can make a cash donation earmarked for HomeBase expenses (like breakfast foods and diapers). You can drop it in the collection plate on any Sunday – just check "other" on the pew envelope and write in "HomeBase."

Questions? Email qaelc99@hmail.com or contact one of the HomeBase coordinators: Pam McIlroy (206-409-4053); Sophie Pritchard (206-288-9435); or Peggy Morgan (206-282-1369).

LUTHERAN WORLD RELIEF QUILTS & KITS

The Ingathering (collection of quilts and kits) will be May 2nd & 3rd, and Oct 31 & Nov 1st at Our Redeemer's LC. Loaders – please mark your calendars.

QAELC Special boxing need on Sunday April 27th: Anyone who can help pack large boxes with quilts, we will pack immediately after the 10:30am service, at 11:45am in the Sanctuary. We need some strong hands that can neatly cram quilts into cardboard boxes. Our quilters have been very proficient at quilting again, and need some help. Blessing of the Quilts will be April 27th during the worship hour.



KITS - See below for items needed for kits. Often some of the items for Personal Care Kits are on sale in winter & spring; school supplies are usually on sale in summer. You may leave items in the far-right drawer under the coffee display in the Narthex. All items should be new and in good condition. I did not list items we do not need this year – pencils, pens, combs.

The following are needed for each Personal Care Kit:

One light-weight bath-size towel (minimum size “40” x 20”; maximum “52” X 27”), dark color recommended.

Two bath-size bars (4 to 5 oz.) of soap, any brand, in original wrapping; each kit needs 8-9oz (so 3 bars if each bar only 3 oz)

One adult-size toothbrush in its original packaging*

One metal nail clippers (attached file optional), remove packaging

**Toothbrush multi-packs may be used by sealing an individual toothbrush in a business-size envelope; no plastic bags or wrap.*

The following items are needed for each School Kit:

Four 70-sheet notebooks of wide- or college-ruled paper approximately 8” X 10½”;
NO loose-leaf paper

One 30-centimeter ruler, or a ruler with centimeters on one side and inches on the other

One pencil sharpener

One blunt scissors (safety scissors with embedded steel blades work well)

One 2½” eraser

All items should be new and in good condition.

Rich Mathes
206-384-1183
lwrmathes@aol.com



Israel, Palestine, Jordan: The Setting for Three Faith Traditions

As you begin a long trip you never know quite what to expect. We knew where we were “going” and we knew that Roger likes archeology. So what would we REALLY see? We started our learning about **Tels** (If a city's structures were demolished people built right on top of the ruins creating a hill or TEL) and **Wells** (lots of steep steps) - to survive attack the cities had to have a water source. And more Tels and Wells.



And then there was the excitement of actually seeing places like Caesarea, the Promised Land, standing on top of Mt. Nebo; the ancient city of Petra (the 8th wonder of the world); actually crossing the sea of Galilee; floating in the Dead Sea; seeing the Jordan River (not deep and wide but VERY muddy) Bethlehem - stable was probably a cave; and Jerusalem!*



1 At **Caesarea** there was a man named Cornelius, a centurion in what was known as the Italian Regiment. Acts 10:1

Standing in the Promised Land

Petra

Jerusalem



**Details will be coming soon to an Adult Forum near you!*



the Last WORD

But, Easter

Right up there with never ending a sentence with a preposition is the other never rule of grammar: *never start a sentence with a conjunction*. What started me thinking about the rules of grammar was how the evangelist Luke in his account of the Easter gospel absolutely disrupts all the rules of grammar with a single **But**. Of course, grammar wasn't the only thing Easter disrupted. Easter disrupts everything, changes everything, and challenges everything we think we know about the universe. **But**, back to the rules of grammar and their association with the Easter gospel.

Whoops! Did you notice how I started the previous sentence above with the word **but**? I did it on purpose to make a point. Luke uses a **But** to start telling the resurrection of our Lord Jesus Christ on that first Easter. Here's Luke's big **But**:

*It was the day of Preparation, and the Sabbath was beginning.
The women who had come with him from Galilee followed,
and they saw the tomb and how his body was laid.
Then they returned and prepared spices and ointments.
On the Sabbath they rested according to the commandment.*

But on the first day of the week, at early dawn, they went to the tomb...

Luke 23:54-24:1

Luke no sooner tells how Jesus died and was buried in the tomb when he begins the account of Jesus' resurrection with the word **But**. **WOW!**

Think about it. It just isn't the rules of grammar disrupted here, but the entire story of Jesus' death and burial in the tomb is disrupted. This **But** has to be the biggest **But** in the entire universe!

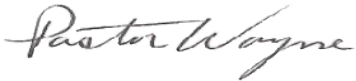
When I was in seminary taking a course in pastoral counseling, I remember my instructor telling us again and again, "When a person uses the word **But** in a sentence; everything they have told you up to that **But** doesn't count. That is, everything someone is telling you up to when they say the word, **But**, isn't important, it's what they say after the **But** that you need to pay attention too.

That same year I learned this lesson the hard way. On a Saturday afternoon my dear wife Jackie decided to surprise me with a whole new hair look. It was a whole new look alright. It looked like she had stuck her finger in a light socket! When I arrived at the hair salon to pick her up, I didn't even recognize her at first. She asked, "Well, what do you think?" I said diplomatically, "Gee, it's different, it really is a change for you." She pressed on, "Do you like it?" "Sure," I said, "I like it just fine" "Fine," she asked skeptically? "Yeah, you look fine. It looks good, **But** I just need some time to get use to it." I may have been treading water in a tsunami up to that **But**. After that **But** I was a man drowning. Nothing before I said the word **But** counted. The only thing that counted was what I said after the **But**.

Easter counts. The evangelist St. Luke begins his account of the resurrection with the little big word **But**. Jesus was crucified, died and was buried, **But** on the third day he rose again.

The power of the resurrection breaks into our lives with the most important **But** there ever was. Yes, Jesus was crucified. Yes, Jesus died. Yes, Jesus was buried. **But on the first day of the week...** It is from this point on that Easter counts. Easter counts in our lives. The power of God's promise of forgiveness, deliverance from sin and death, and the promise of eternal life truly is **the last word**.

This **But's** for you. Joyous Easter,

A handwritten signature in cursive script that reads "Pastor Wayne".

Pastor Wayne

SERVING IN APRIL

Ushers: 10:30 a.m.

6 Sophie Pritchard
13 TBD
17 Sophie Pritchard
20 Don Thomas, Alice Twelker
27 Jim Margard

Offering Counters

Shirley Flory and Diane Wearne

Lector: 8:00 a.m.

6 Jacqui Darroch
13 Harold Robertson
20 Dan Squires
27 Jan Olson

Communion Server: 8:00 a.m.

6 Jacqui Darroch
13 Georganne Robertson
20 Deb Squires
27 Linda Olson

Assisting Minister: 10:30 a.m.

6 Renée Dudley
13 Tim Porter
20 Richard Crummett & Meg Shaw
27 Rich Mathes

Altar Guild:

Jan & Linda Olson

Sunday Coffee Hosts: (8:00 a.m.)

6 Katherine Knorr
13 Roger Anderson
20 Easter Day
27 TBD

Sunday Coffee Hosts: (10:30 a.m.)

6 The Louie Family
13 Lois Unseth & Marie Tobiason
20 Easter Day
27 TBD

Flowers on the Altar

6-13 No Flowers during Lent
20 Easter Day
27 Richard and Joan Crummett

Staff:

| | |
|---------------------|-----------------------------|
| Pastor | Rev. Wayne E. Bacus |
| Campus Pastor-U.W. | The Rev. Elizabeth Rawlings |
| Cantor | Arletta Anderson |
| Parish Assistant | Beth Griffith |
| Missionary to China | Rev. Dorcas Wang |
| LYONS | Jon Ross |
| LYONS | Renee Dudley |
| Sexton | Don Boelter |

Deadline for the May Quill is April 18th

E-MAIL ADDRESSES FOR QAELC STAFF:

| | | | |
|------------------|--|----------------------|--|
| Pastor Wayne: | pastor@queenannelutheran.org | Parish Administrator | admin@queenannelutheran.org |
| Arletta Anderson | ajp724@comcast.net | Don Boelter | donboelter@gmail.com |