

The Quill

MARCH 2015



Queen Anne

LUTHERAN CHURCH

Inside this issue

Lent & Holy Week Services	1
From the Cantor	2
Birthdays & Announcements	3
Faith & Film	5
Dossal Curtain Project	6
Women of QALC	
Events and Photos	7
Book Club, HomeBase, Property Committee	10
Sound System Photos	11
LWR and LYONS News	12
Men's Group Events (Easter Breakfast!)	13
Bishop's Message	14
The Last Word	15
Serving in March	16
March Calendar	18



LENTEN WEDNESDAYS

February 25—March 25: 10:30 AM (chapel)

February 25—March 25: 6:00PM

a simple meal, a discussion beginning at 6:45PM as we “find ourselves in Lent,” concluding with a brief Compline service.

CHILD CARE: If you are a family who would appreciate child care for your 4 year olds and younger for any of our mid-week services during these seasons of Lent and Holy Week, please let the office know and child care can be provided.

HOLY WEEK SERVICES

Palm Sunday

March 29: 8:00 AM and 10:30 AM

Maundy Thursday

April 2: 10:30 AM and 7:30 PM

Good Friday

April 3: 7:30 PM

Easter Vigil

April 4: 7:30 PM

Easter Sunday

April 5: 8:00 AM and 10:30 AM

*Easter Breakfast and Easter Egg Hunt
from 9:00 to 10:00 AM*

From the Cantor . . .

Singing the Psalms together as we have done at the 10:30 service most of the Epiphany Season and now into Lent follows a practice in the Lutheran Church that has been in place for centuries. In *Evangelical Lutheran Worship*, all the psalms are included as number 1 through number 150 as the first hymns in the book. The hymns of Advent (the first Season of the Church Year) begin with number 151. Check it out next time you are in worship. The designers of the ELW are teaching us a basic principle of the importance of singing the psalms.

As found in the ELW, page 335 . . .

Roots of Assembly Song

The song of the Christian assembly has its roots in the psalms of the Hebrew people, our forebears in faith. Jesus' own prayer relied on the psalms. The apostle Paul encouraged the faithful to sing "psalms, hymns, and spiritual songs to God" (Col. 3:16). Christians through the centuries have sung them daily.

Martin Luther considered the psalms the summary of all scripture, speaking to many situations and allowing the expression of a wide range of human response, such as adoration, hope and faith, yet make room also for deep distress and questioning.

There are a variety of ways to sing the psalms. Actually, I attended a workshop once that was titled "101 Ways to Sing the Psalms." We have been using the most common way for Lutherans, which is to follow the settings published in the ELW Psalter—three volumes, one for each of the Lectionary Years A, B, and C. The refrain text is appointed and freely set to a melody with accompaniment by a contemporary composer of the church. The psalm texts are chanted to a psalm tone. You can find the 16 choices of psalm tones in the ELW on pages 337-8.

The opportunities for variety in psalm singing are abundant. In our worship on the Second Sunday in Lent, the Shalom Choir will sing the psalm text set to a hymn tune, the refrain sung by the congregation. On the Third Sunday in Lent, the Cherub Choir will sing the refrain, while the congregation will actually speak the psalm text responsively. Yes, the spoken style works also, especially when inviting our youngest worship leaders to participate in worship in a way that works for them. We have often used handbells and other instruments with the singing of psalms. The Cherubs will be accompanied by the Orff instruments. Also, there are hymns in the ELW that are paraphrased texts of psalms, such as *All People That on Earth Do Dwell*-Psalm 100; *As the Grains of Wheat*-Psalm 81; *Thy Holy Wings*-Psalm 72; *Oh, Sing to the Lord* and *Joy to the World*-Psalm 98.

The Psalms are one of the greatest spiritual and artistic treasures of the church. Thanks be to God for our rich heritage of music in the Lutheran Church.

I look forward to worshipping with you.

Arletta Anderson,

Cantor and Associate in Ministry cantor@queenannelutheran.org 425.355.8776

ANNOUNCEMENTS

Large Print Bulletins – A binder with a large print bulletin and large print hymns is available for the asking for worship services. Please leave a note in the office or speak to our Cantor, Arletta Anderson, if a larger print bulletin would be helpful to you. We currently assemble a few each week and they are faithfully used. If there is a need for a few more binders, we will certainly make them available.

Join the Fun of Ringing Handbells!



At Queen Anne Lutheran our handbell ministry is a bit different from most other congregations. Instead of weekly rehearsals, we have 3-4 sets a year with a commitment of 5 one-hour rehearsals and a Sunday morning. If you are intrigued with handbells, seems like it might be kind of fun, then

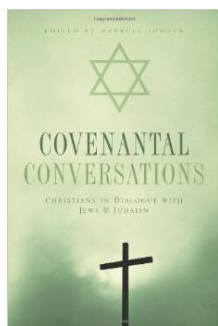
this opportunity is for you! Arletta is planning a set for Easter Day. The rehearsals this time will fall on either Tuesdays or Thursdays in March. Contact Arletta for the full schedule and to indicate your interest. Middle school and high school students are welcome to serve in this way. Music reading ability is helpful, but certainly not a requirement. Neither is church membership . . . invite your neighbors, cousins, co-workers!



MARCH BIRTHDAYS

- | | |
|----|------------------|
| 1 | Nancy Sandvik |
| 2 | Rich Mathes |
| 3 | Nathan Pihl. |
| | John Fandel |
| 4 | Sallie Wilson |
| 6 | Kelly McCauley |
| | Ken Hockman |
| 7 | Dick Steffen |
| 9 | Mark Dibble |
| 11 | Lena Mathis |
| 12 | Dorothy Duvall |
| 13 | Don Thomas |
| 17 | Pat Sobeck |
| 18 | James McLauchlan |
| | Jessica Cronce |
| | Michael Houle |
| 21 | Edi Watne |
| 22 | Don Sobeck |
| 23 | Carol Whitfield |
| 24 | Isaac McCauley |
| | Lois Unseth |

If your (or family member's) birthday is missing from this list, please contact the church office at admin@queenannelutheran.org or 206-284-1960



Adult Forum meets each Sunday at 9:15AM in the Fellowship Hall. In the weeks to come, we will continue our “**Covenantal Conversations**,” exploring theological and cultural relationships with our sisters and brothers in the Jewish faith.

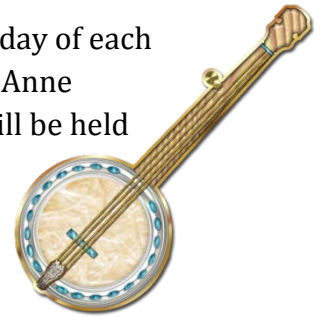
- | | |
|----------|-----------|
| March 1 | Chapter 5 |
| March 8 | Chapter 6 |
| March 15 | Chapter 7 |
| March 22 | Chapter 8 |
| March 29 | Chapter 9 |

Lunch & Learn meets every Tuesday in March. Please join us in the Conference Room for a lively discussion of the book of Genesis; bring a sack lunch.



Community Music Jam Sessions!

Beginning Saturday, March 7th, and continuing on the first Saturday of each month, a community music jam session will be held at Queen Anne Lutheran Church from 3:00–6:00 pm. The jam session will be held in the downstairs Fellowship Hall until better weather lets us move outside to a nearby park.



The jam will be led by Emmett Pritchard, volunteer instructor of bluegrass band at Shoreline Community College.

The jam is open to musicians of every skill level and singers, fans, and their families are especially encouraged to join us. Bluegrass, gospel, country, folk, blues, and other roots music styles are welcome (double bonus for any style that features accordion). If you like to play an acoustic instrument, sing, or just be in the same room where fun music is happening, then be sure to join us.

For more information about the jam, call Emmett at (206) 288-9433.



New Rail for the Narthex

Looking for those sign-up sheets? A new rail was put up on the wall next to the narthex kitchen. This rail will now hold the ongoing sign-up sheets for coffee hosting, flowers, and ushers. That will free up the larger rail to have information and sign-ups about special events in the church.

If you have any materials to display in the church, please leave them with Barb in the office.

Yoga at Queen Anne Lutheran



Community Yoga is held each Monday evening in the Fellowship Hall from 6:30 PM to 8:30PM under the leadership of Amy Blackshire. All fitness levels, ages (*over 18*), and gender are welcome. Please bring your mat, a bottle of water, and a small blanket. During Lent, the yoga class will offer a special 6-week series where each week's meditations revolve around a certain theme.

Individuals who do not wish to participate in the physical part of the class are welcome to arrive at 8:00PM to participate in this meditative time. The themes are:

Monday (2.23): Mindfulness

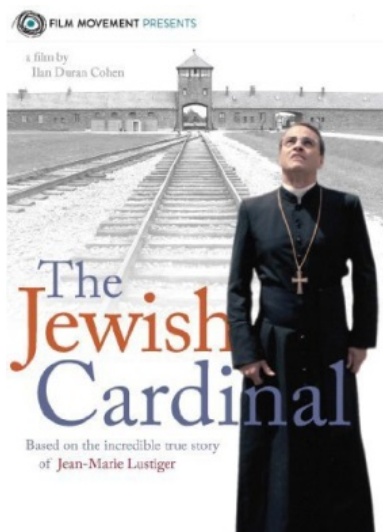
Monday (3.2): Love

Monday (3.9): Patience

Monday (3.16): Perseverance

Monday (3.23): Grace for self

Monday (3.30): Grace extended to others



FAITH AND FILM IS BACK!

The Oscars are over but a lot of us are still eager to discuss good movies with spiritual themes.

While we are waiting to call a new Pastor, our congregation is invited to re-think the missions and activities we do together as a worshipping community. Faith and Film is one of those activities that many of us looked forward to each month, especially with Pastor Wayne's insights to guide us through the discussions. These events have also been wonderful opportunities to invite friends and neighbors into the life of our church community.

Pastor Wayne gave us two decades of training, so now we are going to bravely lead a few months of Faith and Film by ourselves.

The good news is, each volunteer will get to choose the movie for that month as well as when we will meet and how that month's gathering is structured. I volunteered to do the first discussion so here is what I've planned:

DATE: **Saturday, March 28**

TIME: 4 PM Appetizers and drinks
 4:30 PM Watch the movie together
 6 PM Discussion... and refills of the drinks and snacks

(If you want to want to watch the movie by yourself and join us later ... or if you want to leave after the movie and miss our lively discussion, that's OK, too.)

MOVIE: "The Jewish Cardinal" (in French with English subtitles)

Unrated but appropriate for 12 years old through adult.

SYNOPSIS: "The Jewish Cardinal" tells the amazing true story of Jean-Marie Lustiger, the son of Polish-Jewish immigrants, who maintained his cultural identity as a Jew even after converting to Catholicism at a young age, and later joining the priesthood. Quickly rising within the ranks of the Church, Lustiger was appointed Archbishop of Paris by Pope Jean Paul II—and found a new platform to celebrate his dual identity as a Catholic Jew, earning him both friends and enemies from either group. When Carmelite nuns settle down to build a convent within the cursed walls of Auschwitz, Lustiger finds himself a mediator between the two communities— and may be forced at last to choose his side.

We will have a sign-up sheet in the Narthex soon. If you have any questions, please contact Carol Ann Davis at cadab@gmail.com or at (206) 315-6256.

—Carol Ann Davis

The Dossal Curtain Project Explained

Twenty five years ago the Memorial Committee made the decision to set in place a plan to replace the dossal curtains in the nave of the church and to complete the paraments (the cloths that dress the altar and pulpit), vestments (garments worn by the clergy), and banners. The architects of the church designed two pockets behind the altar for the purpose of housing four dossal curtains—the white, purple, green, and red—for use during the liturgical seasons. At the time this decision was made, all of the original curtains were torn or shredding. Where there were pieces of the original curtains that could be used, it was determined that we would use them. This is the case with the first curtain, which is white. The two bands of gold and black were from the original white curtain.

Over the next 22 years we proceeded to design and complete six dossal curtains—the white (1993), purple (2002), green (2004), red (2006), blue (2009) and scarlet (2012). There are now six dossal curtains, two more than the original four dossal curtains. Blue was a liturgical color that was added after the pockets had been designed. The church determined that purple would be the liturgical color for Lent and royal blue would be the color for Advent. The scarlet curtain was a color that was infrequently used and is the liturgical color for Holy Week. In order to accommodate the storage of two additional curtains, a new design of dossal curtain was developed for the red and scarlet curtains. During this time, paraments were added to those dossal curtain sets that did not have matching paraments. Where paraments were already in place, we made sure the color and design of the new dossal curtains worked with them. Matching vestments were also designed and added to the sets that were incomplete.

The liturgical banners that hang over the congregation from the pillars have also been added where we did not have them. Much time has been spent researching the fabrics for wear, beauty, and color. Great care has been taken to be sure all the fabrics work well with existing vestments and paraments. We have accomplished much over the last several years and have almost completed what we set out to do so many years ago. Many families have given generously towards this endeavor in memory of loved ones.

This Lent you will see the new Lenten banners going up. In that the purple curtain was done thirteen years ago, it took a year and a half to find the right fabrics to work best with the purples of the existing Lenten dossal curtain, paraments, and vestments. There was then the task of designing them to have symbolic meaning. It was determined that there would be a patterned fabric in the center that drew all the purples of our Lenten dossal curtain, paraments, and vestments together, but would also coordinate with the pattern of the velvet in the purple dossal curtain. We wanted the pattern to include wood tones to represent the cross of Christ's crucifixion which is the culmination of Lent and Holy Week. Lent is a time of thought and reflection, so the Lenten banners will go up slowly: two for the first two weeks with a wider section of pattern; another two in two weeks will be in place with the pattern slightly narrower; and two additional ones hung for the last week of Lent showing the pattern yet more narrow with an embroidered crown of thorns. As we journey through Lent, our road narrows as we are drawn closer to Christ and Christ's death on the cross.

The Memorial Committee,
*Virginia Stamey-Johnson, Chair; Jan Slawson; Jean Oplinger; Sallie Wilson; Jennifer Jones; and
Pastor Doug Stensby*

February ended with a GREAT **Lenten Breakfast**. Pastor Kathleen Anderson helped guide us on the path of our Lenten journey. Giving “things” up for Lent has always seemed a little strange to me—especially when it always seems to be chocolate (now coffee might be different). Pastor Anderson suggested a more meaningful idea in today’s world might be a sacrifice of *time*—for example, giving time to read the Bible (not just those scriptures presented in the Lectionary). She led us through Women of the Bible and their faith walks. Once again we heard about Rahab (a woman in our last year’s Bible Study). A little known woman, whose life was shaped by the men in her life—but she stayed faithful. Pastor Anderson also mentioned that in this year’s Lenten lectionary, there is only one woman mentioned: Mary.

I want to thank again all the women who made this event possible. If you missed this year’s Lenten Breakfast but want to make sure you are there *next* year, mark February 13 on your calendar!



Volunteers in the kitchen (left and below) were glad to get a chance to enjoy the breakfast, too. Pastor Kathleen Anderson (above, at podium) brought us a Lenten message that morning.



QALC Women's News

Bible Study this month has us studying Suffering and Endurance. Our discussion begins with the book of Job (Job 5:17-18; 8:1-7; 11:1-6; 7:1-6 and 21:1-16) and then goes on to Paul's letter to the Christians in Rome (Romans 5:1-5; and Romans 8:31-39). We think about the age old questions, "Why do innocent people suffer?" and "Are there times in our own suffering when we find it difficult to pray?" Paul says that the ultimate Christian hope is that nothing can separate us from God's love.

Mark your calendars:

Blessing of the Quilts, Kits, and All the Hands that Help will be Sunday, April 26. We will need all those who are capable and willing to help fold the quilts and pack the boxes after the 10:30 service. And of course the boxes need to be weighed and labeled. Thanks to all those who are willing to help. If you would like to help put kits together, let me know.

"The Committee" has not forgotten that it is time to have an **annual meeting** to elect new Committee members. Needed are a new Treasurer and a replacement for outgoing Committee member Sallie Wilson. Look for that meeting sometime in April.

Your Women's Committee,

Candy Mathes, Sallie Wilson, Sophie Pritchard, Pat Sobeck, and Jacqui Darroch

Westside Baby Donations

Thanks again to all who have continued to donate so many new and gently used items to WestSide Baby (formerly St. Joseph's Baby Corner). With the merger has come a new location which I recently visited. The location at 2301 S. Jackson St. is larger, brighter and more easily accessible as it is located in a small shopping center next to a grocery store and other small businesses. Their hours have also changed and

no appointment is required to donate items. In addition they have several new donation drop off sites including one for clothing, diapers and car seats (less than 6 years old only) at Childish Things on Holman Road. All this information and much more can be found on their website at www.westsidebaby.org.



Please continue to drop off your gently used and new baby and children's clothing and small toys in the drawer in the narthex. I will periodically take them downtown. If you have items too large to fit in the drawer or have questions, please call me at 206-282-2341.

Thanks again for your support as we continue to contribute toward providing part of the over 5,000 bags of clothing distributed to needy children in King County each year!

—Ellen Hockman
206-282-2341
kehockman@yahoo.com

Women of QALC: Ongoing Groups



Come join us at a circle this month!
Please check with the circle leaders if you would like to attend.

Julia Circle 1st Monday of the month at 7:00 PM.
Contact Georganne Robertson or Candy Mathes.

Northern Lights: Monday, February 9 at 7:00 PM.
Contact Dolly Smith.

Katie's Table: 3rd Saturday at 9 AM. For location & questions please contact Joan Crummett.

Sewing and Service: Wednesdays.
Contact Lois Unseth or Shirley Flory.

Sunshiner's Circle: Usually meets 4th Wednesday at noon. Contact Jean MacLauchlan.

PDQ's (Pizza, Damsels, and Quilts):
3rd Tuesday of most months, sometime after 5:30 PM. Light supper provided. Contact Karen McCullough.

Queen Anne Quilters

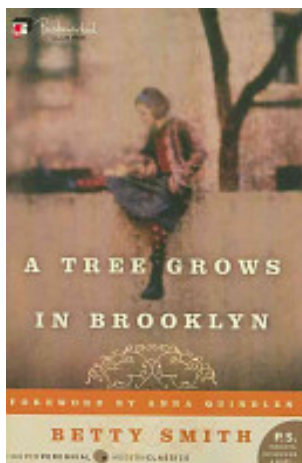


Quilters come in all shapes and sizes! ►



Come Join Our Book Discussion in the Narthex on March 30 at 7PM

A Tree Grows in Brooklyn



By Betty Smith

Francie Nolan is the precocious and thoughtful daughter of a hardworking yet stern mother and her beloved alcoholic father who struggle to get by in the impoverished slums of Brooklyn. Smith records in dizzying detail the daily lives of Francie and her brother Neely. Smith's characters are richly developed and memorable, and the characters' struggles continue to be relatable. This coming-of-age tale is realistic and full of tenderness, without being sentimental. Issues such as poverty, sex, and politics are discussed through the lens of Francie's developing understanding of the world. The complexity of these themes and the rich historical portrait of early 1900s makes it an excellent novel for use in high school classrooms. Librarians may have to booktalk this classic to readers, but

those who pick it up will be delighted.

Mary's Place Rotating Shelter at Queen Anne Lutheran: HomeBase Update



The Council and the program coordinators are in dialogue about how to increase our volunteer base and make the program run even more smoothly, all with an eye toward hosting for two weeks in October. Watch these pages and the Sunday bulletin for further updates.

Notes from the Property Committee:

Trash/Compostable/Recyclable: The City of Seattle will enforce the separation of compostables and recyclables from ordinary trash (garbage) this year. New signs from the City of Seattle will be posted—once they arrive—above each can, to help you figure out the sorting process. We will also try to ensure more rooms have appropriate sized compost containers—the green ones.

Do you know where “**compostable**” silverware goes?
Into the trash. Cedar Grove cannot accept them.

Where do **deli or grocery meat or fish liners** go?
Mostly into the trash. Very few brands are allowed in our compost at this time.

ALL food* (including bones) goes into the green compost liners/cans. However, waxed food containers, such as cardboard milk cartons, do not go to compost. They must be rinsed and go to recycle.

** “FOOD” does not include the packaging if it cannot be composted— cellophane, plastic containers or plastic bottles.*

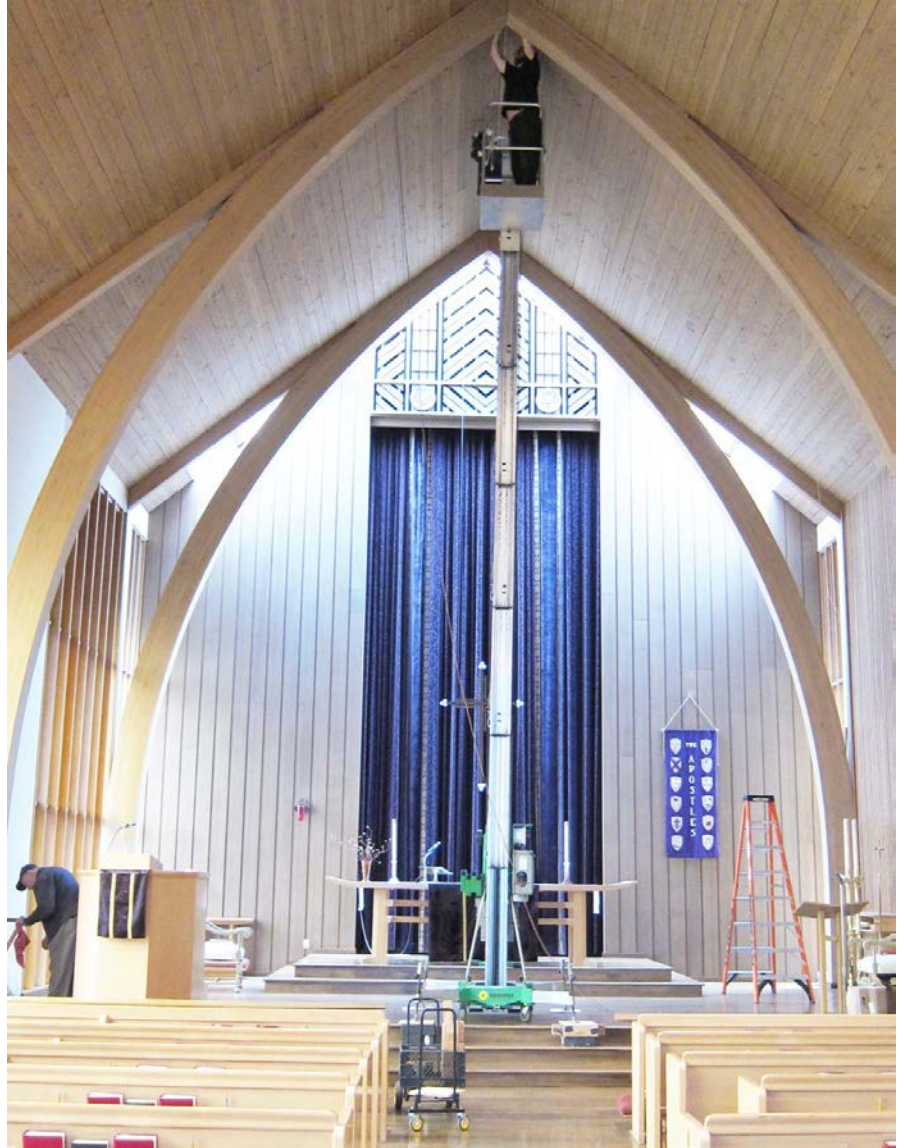
—Rich Mathes



Thanks to Gary Greenwood for his diligent cleaning and painting of the breezeway light covers.

New Sound System Update:

Morgan Sound started installation of the new sound system on Feb 23rd. By week's end, all the new wiring was installed, and all the old speakers removed. Starting around March 6th they will return for the final week of installation. They have provided temporary speakers to use until the installation is completed.



THANKS:

Carol Ann Davis would like to thank the congregation for their generous and quick response to her office's socks and gloves drive for Mary's Place. "I am ABSOLUTELY overwhelmed with gratitude for the donations to Mary's Place! There were 2 full boxes of donations from my church family for me to deliver on Wednesday!"

Pastor Wayne and Jackie Bacus would like to thank the congregation for the gift of the photo album honoring their time with us.

Lutheran World Relief Personal Care Kits materials needed for Spring 2015 Ingathering

Because some personal care kit items are often on sale early in the calendar year, we encourage you to purchase those items when you see them on sale. Please leave the items in the lower right drawer in the Narthex below the LWR coffee & chocolates. *NOTE: toothbrushes and combs are not needed this spring. We would like to assemble 50+ Personal Care Kits in early April, so we will need at least 50 of each of Personal Care Kit items (i.e. 100 bath-size bars of soap for 50 kits and 50 towels).*

The following are needed for each Personal Care Kits:

One light-weight bath-size towel (minimum size 40" x 20"; maximum size 52" X 27"), dark color recommended.

Two bath-size bars (4 to 5 oz.) of soap, any brand, in original wrapping; each kit needs 8-9oz (so 3 bars if each bar only 3 oz)

All items should be new and in good condition.

The Spring 2015 ingathering will be May 1st & May 2nd at Our Redeemers' Lutheran Church. If you are able to lift 30 pound boxes, we always need loaders for two hour shifts. If you cannot load, We also need traffic directors to keep the 100 cars and trucks in order in a crowded parking lot.

Call Rich or Candy Mathes if questions. 206-384-1183 or lwrmathes@aol.com



LYONS Meeting:

We have invited all the LYONS member church councils to meet together on March 10th at Phinney Ridge Lutheran Church. The Financial Advisory Committee for LYONS will be giving a presentation of our 10 year financial plan and how it affects our future together. The Pastors will also be weighing in on ways that the LYONS churches can collaborate going forward. We are excited for this opportunity and your council will report back on what they hear at this meeting!

News for LYONS Youth:

Join us Wednesdays at **Holy Grounds Coffee** (near Whitman Middle School) from 2:30-4:30pm! Check your bulletins or our Facebook page (Lutheran Youth of North Seattle) for any changes.

There is still room for the **2015 Middle School Summer Trip!** This year's summer trip we will be heading back near Leavenworth to go rafting, hiking, and spending time in God's beautiful creation. We'll be there June 28-30, 2015. It will cost \$100 per youth. Please sign up by March 22nd. For more information about this trip, contact Megan Hundley at megan@roaringlyons.org.

Bergstrom Scholarship applications are now posted to the LYONS website (www.roaringlyons.org). Applications are due April 15th.

Dinner Theater 2015 "Lutheran Night Live" is May 1, 2, 3 and 8, 9, 10 at Ballard First Lutheran.

Mark your calendars! We'll have a high school **Memorial Day Weekend** retreat. Stay tuned for details!

Camp Lutherwood has registration open for this summer. Sign up by April 15 for early bird pricing! Information available at www.camplutherwood.org

EASTERBREAKFAST

April 5, 2015 9 a.m. - 10 a.m.



This year the Men's Group once again has taken on the challenge of being in charge of the Easter Brunch - but everyone may help! Help is needed setting up, decorating (table decorations), & cleaning up as well as food contributions - your "favorite" egg dish, fruit, or pastries. If you would like to help set up, serve or cook, please sign up in the Narthex or contact Rich Mathes 384-1183.

Queen Anne Men's Ministry (For men of all ages):

We invite men of all ages to join in conversation and service to the community on a regular basis. Our regular monthly meeting on Saturday mornings includes discussion of Scriptural topics, how they relate to our 21st century lives, and what we can do to live as Christians in the world. Our February discussion revolved around Lent—history, how we each participate (or maybe can participate).

March 21: No discussion meeting.

April 4: Discussion group at 8:30 AM, Saturday, Chapel Conference Room, with healthy snacks. Setup Fellowship Hall for Easter Breakfast.

April 5: Easter Breakfast. Will need volunteers for setup, cooking, serving, and cleanup. Sign-up sheet is in the Narthex. We also will need contributions of egg dishes and breads.

May 1 & 2: LWR Truck Loading at Our Redeemers' LC in Ballard (8AM-3PM Friday; 8 AM – noon Saturday)

—Rich Mathes, Richard Crummett

What do Amazon.com® & QALC have in common? YOU!

By going to *AmazonSmile®* and designating Queen Anne Lutheran Church as your charitable organization, *Amazon.com®* will donate 0.5% of your eligible *AmazonSmile®* purchase to QALC. So you can get your favorite books, clothes, gifts, and even groceries while supporting the ministry of QALC. Get started at smile.amazon.com



—Richard Crummett

Bishop's Message



Patience Now!

by Kirby Unti, NWWA Synod Bishop

Return to the Lord our God for God is gracious and merciful, slow to anger and abounding in steadfast love.

I had on my desk for years a small wooden block with the etched saying, “God give me patience and give it to me now!”

It was a helpful corrective to me as a young pastor because I just could hardly tolerate the slow pace by which I saw change taking place in the life of the congregation. It was only after I had been there for several years that I discovered how long it takes before trust can be established. Even then the pace has to be just on the edge of the community’s discomfort level.

This is such a challenging balance for leaders to navigate. On the one hand you have to establish a sense of trust, stability and confidence. On the other hand you have to push for change, disrupt the system and modulate the level of disappointment that it creates. It was living within this tension that began to teach me the importance of patience.

I was equally challenged at home trying to learn patience with our four daughters. I was not good at it and marveled at how Kim was able to keep her cool. I was often the one acting like the two year old. It finally was through the help of a counselor

that I had a breakthrough. She said to me, “Kirby, you need to lower your expectations and allow your children to be children.” It was a painful lesson to learn but one that continues to provide me with dividends.

Two years ago during the summer boating season I was preparing to trailer our boat to the launch. It meant opening the large side gate on our property. In the process of doing so the hinge of the gate smashed my middle finger and blackened the nail. Jesus and I exchanged a few words and as the pain subsided I continued to ready the boat.

Would you believe that finger nail has not yet completely restored itself? In fact, at the rate that it is healing I would imagine it will be almost two years to the date before there is no sign of the injury. It is a reminder to me that the whole creation moves at a very different pace.

Friends I believe that the times that we are living in as a church call for patience. God is at work continuing to call, gather and sanctify but not at the rate of speed we demand. These times call for us to slow down, breathe deeply and listen carefully.

We need to allow the Season of Lent to be the gift that it is intended to be. Let Lent be a time that interrupts the pace of our lives, calls us back to God, and stills our hearts so that we can know, as the Psalmist sings, “God is a gracious and merciful, SLOW to anger and abounding in steadfast love.”



the Last WORD

A Game That Can't Be Won

I enjoy movies. I have a particular fondness for sports movies. I still get a thrill when Rudy Ruettiger gets carried off the field by the Notre Dame Football team, even though I have seen it happen twenty times. I do not consider the Major League Baseball season to have begun until I see Roy Hobbs win the pennant in “The Natural” or hear James Earl Jones describe baseball before he ventures into the mysterious cornfield in a “Field of Dreams.” “Is this heaven?” “No. It’s Iowa.” (My own state pride is firmly located in Washington.)

I even enjoy sports movies about sports that I have little experience with. “Invictus” has become a favorite for the leadership shown in South Africa when no one thought that the Springboks could win the Rugby World Cup, and many thought that they should not even play. I have hit a golf ball around once or twice, but I am still a novice, and not that far from unacquainted with the sport.

Some say that sports are a metaphor for life. It could be. (The Super Bowl had its own lessons to teach but that will wait for another time.) “The Legend of Bagger Vance” was on the other day. You could dissect the film, if you wanted to, but one line stood out as a thought for Lent. “What I’m talkin’ about is a game. A game that can’t be won, only played.”

Lent is not a contest for several weeks that we win by meeting some challenge of some tasty thing sacrificed, or an adventure in spirituality that ends when Lent does. It is more than a season of the Church year. It is a time of reflecting on disciplines that should be a part of our life throughout the year. Repentance, Renewal, and Reconciliation, Prayer, Patience, and Participation; and so much more. We do not hand out awards or trophies at the end of Lent, we just continue into life held in the promise of the Resurrection.

There is a place where the quote in question is not exactly right. The winning has already been done. Jesus Christ has done it all. But there are still more rounds to be played. Some-times the shots are from the tee, sometimes from the trees or a sand trap, sometimes from the fairway. On some days the putts all seem to fall, and on other days they will not. Scores may be kept, but we really play against ourselves and our own demons. Luther might be tempted to say that we play this game against sin, death, and the Devil. But play we will.

Since we already know who has ultimately won, enjoy the game.

Pastor Doug Stensby

SERVING IN MARCH

Ushers: (10:30 AM)

- 1 Jim Margard, Megan Hundley
- 8 Rich Mathes
- 15 Amy Blackshire
- 22 TBD
- 29 Jim Margard, Amy Blackshire

Offering Counters

Gary Greenwood and Sallie Wilson

Lectors (8:00 AM)

- 1 Jacqui Darroch
- 8 Dan Squires
- 15 Jan Olson
- 22 Harold Robertson
- 29 Ken Hockman

Communion Servers (8:00 AM)

- 1 Jacqui Darroch
- 8 Deb Squires
- 15 Linda Olson
- 22 Georganne Robertson
- 29 Ellen Hockman

Assisting Minister (10:30 AM)

- 1 Rich Mathes
- 8 Marc Oplinger
- 15 Kristi Houle
- 22 Kirsten Erickson
- 29 Karen Saunders

Altar Guild:

Joan and Richard Crummett

Sunday Coffee Hosts: (8:00 AM)

- 1 Harold & Georganne Robertson
- 8 Ken & Ellen Hockman
- 15 Mac & Dolly Smith
- 22 Katherine Knorr
- 29 TBD

Sunday Coffee Hosts: (10:30 AM)

- 1 Al Shabino & Peggy Morgan
- 8 Chris & Lori Roozen
- 15 Ruth Ghormley & Jean McLauchlan
- 22 Pat & Don Sobeck
- 29 Sebille Moulster, Shirley Flory,
& Sallie Wilson

Flowers on the Altar

(No Flowers during Lent)

Staff:

Pastor	Rev. Doug L. Stensby
Campus Pastor-U.W.	Rev. Elizabeth Rawlings
Cantor	Arletta Anderson
Parish Administrator	Barbara Bash
Missionary to China	Rev. Dorcas Wang
LYONS Director	Jon Ross
LYONS Program Assistant	Megan Hundley
Sexton	John Bryant

Deadline for the April Quill is Tuesday, March 24.

E-MAIL ADDRESSES for QALC STAFF:

Interim Pastor Doug Stensby	pastor@queenannelutheran.org
Cantor Arletta Anderson	ajp724@comcast.net
Parish Administrator Barb Bash	admin@queenannelutheran.org
Sexton John Bryant	sexton@queenannelutheran.org

March 2015						
Sunday	Monday	Tuesday	Wednesday	Thursday	Friday	Saturday
1 8:00am Worship Service 9:15am Adult Forum 9:30am Sunday School 10:30am Worship Service	2 8:00am Sound System Installation 6:30pm Yoga 7:00pm 12-Step OA 7:00pm Julia Circle	3 8:00am Sound System Installation 12:00pm Lunch & Learn 7:00pm Executive Committee	4 8:00am Sound System Installation 9:15am Sewing and Service 10:30am Lenten Service 3:00 pm Debate Club (Coe) 5:30pm Shalom Choir 6:00pm Lenten Evening Meal & Worship 6:15pm Cherub Choir 8:00pm Alateen 8:00pm Alanon 8:00pm A.A.	5 8:00am Sound System Installation 3:00pm Staff Meeting 7:00pm Chancel Choir	6 8:00am Sound System Installation	7 10:30am Alanon Women 3:00pm Community Music Jam
8 8:00am Worship Service 9:15am Adult Forum 9:30am Sunday School 10:30am Worship Service 11:45am Newcomers' Coffee	9 6:30pm Yoga 7:00pm Northern Lights 7:00pm 12-Step OA	10 12:00pm Lunch & Learn 7:00pm Church Council at Phinney Ridge	11 9:15am Sewing and Service 10:30am Lenten Service 3:00 pm Debate Club (Coe) 6:00pm Lenten Evening Meal & Worship 8:00pm Alateen 8:00pm Alanon 8:00pm A.A.	12 3:00pm Staff Meeting 7:00pm Chancel Choir	13	14 10:30am Alanon Women
15 8:00am Worship Service 9:15am Adult Forum 9:30am Sunday School 10:30am Worship Service	16 6:30pm Yoga 7:00pm 12-Step OA	17 12:00pm Interfaith Meeting 12:00pm Lunch & Learn 4:30pm Worship and Music Committee 5:30pm PDQ	18 9:15am Sewing and Service 10:30am Lenten Service 3:00 pm Debate Club (Coe) 6:00pm Lenten Evening Meal & Worship 8:00pm Alanon 8:00pm Alateen 8:00pm A.A.	19 3:00pm Staff Meeting 7:00pm Chancel Choir	20	21 9:00am Katie's Table 10:30am Alanon Women
22 8:00am Worship Service 9:15am Adult Forum 9:30am Sunday School 10:30am Worship Service	23 6:30pm Yoga 7:00pm QA Book Group 7:00pm 12-Step OA	24 12:00pm Lunch & Learn	25 9:15am Sewing and Service 10:30am Lenten Service 12:00pm Sunshiners 3:00 pm Debate Club (Coe) 5:30pm Shalom Choir 6:00pm Lenten Evening Meal & Worship 6:15pm Cherub Choir 8:00pm Alanon 8:00pm Alateen 8:00pm A.A.	26 3:00pm Staff Meeting 7:00pm Chancel Choir	27	28 10:30am Alanon Women 4:00pm Faith & Film
29 PALM SUNDAY 8:00am Worship Service 9:15am Adult Forum 9:30am Sunday School 10:30am Worship Service	30 6:30pm Yoga 7:00pm 12-Step OA	31	APRIL 1 9:15am Sewing and Service 3:00 pm Debate Club (Coe) 5:30pm Shalom Choir 6:15pm Cherub Choir 7:00pm Chancel Choir 8:00pm Alanon 8:00pm Alateen 8:00pm A.A.	2 MAUNDY THURSDAY 10:30am Worship Service 3:00pm Staff Meeting 7:30pm Worship Service	3 GOOD FRIDAY 7:30pm Worship Service	4 HOLY SATURDAY 8:30am Men's Group 7:30pm Easter Vigil