

# The Quill

F E B R U A R Y 2 0 1 9



## Queen Anne

### LUTHERAN CHURCH

#### Inside this issue

Annual Meeting Highlights .....	3
ForKids Happenings .....	5
Announcements and Birthdays .....	6-8
Adult Forums in February .....	8
Inquiring Minds Want to Know .....	9
Men's Ministry .....	10
LYONS Events .....	10
QALC Women's Ministry .....	11
Book Group Schedule .....	12
Thanksgivings .....	13
Bishop Unti's Message .....	14
Serving in February .....	15
February Calendar .....	16

*The Quill is available in the narthex and at [www.queenannelutheran.org](http://www.queenannelutheran.org). If you would prefer to have a copy mailed to you each month, just contact the church office!*

## **Highlights from the 2019 Annual Congregational Meeting**

We met on January 27<sup>th</sup> for a wonderful lunch (Thanks to all responsible!) and for our QALC Annual Meeting. Some 51 voting members registered their attendance at the meeting. Full reports are available in the meeting folder which will soon be in the Members Area of our [queenannelutheran.org](http://queenannelutheran.org) website.

We approved minutes from the 2018 Annual Meeting and from the two additional Congregational Meetings held in 2018. Highlights from their reports were presented by Terry Anderson, Children and Family Ministry Coordinator; Kirsten Erickson, Church Council President; and by Pastor Dan Peterson.

Treasurer Myra Dittes presented the report of 2018 receipts and expenditures, which was approved as presented. Receipts from all sources were above projections by \$14,804; expenditures were \$51,578 below projections for the Cantor budget (due to our not yet finding a permanent Cantor) and \$6,499 below projections for all other areas. As a result, there was a \$72,881 ending balance in the General Fund that has been allocated toward 2019 expenses.

Dan Squires presented the Audit Committee report which validated select entries and balances in the General Fund, Parsonage Fund and Endowment Fund as well as the QALC Women's Fund.

Marc Oplinger presented the Nominating Committee Report. He thanked outgoing council members Kirsten Erickson, Jacqui Darroch, Jennifer Jones and Dolly Smith.

The slate of candidates was approved as presented. See next page for our new list of those elected and continuing in their service.

Two revisions to our QALC constitution and by-laws were approved: Change in the minimum number of elected council members from nine to seven (in addition to the pastor and the four congregational officers) and change of the maximum ceiling for council financial obligations in excess of anticipated receipts from \$5,000 to \$10,000. It was clarified that "anticipated receipts" are defined here as equal to the total Expenditure Guidelines, since the guidelines include expected receipts as well as expected expenses.

Rich Mathes presented the proposed 2019 Expenditure Guidelines totaling \$517,438. This figure compares to 2018 Guidelines of \$431,262 and actual expenditures of \$373,185. Differences in these amounts reflect our having had a temporary Cantor in 2018 and planning for a permanent Cantor in 2019, as well as a number of smaller differences. Rich noted that the Anticipated Total Receipts of \$517,438 include the \$72,881 General Fund 2018 surplus and a 9% increase in Sunday offerings. It can be estimated that the large amount of carry-over funding will not be available in 2020 and that receipts from a multi-year pledge will continue to decrease as planned, necessitating continued and increased giving from our congregation. The 2019 Guidelines for Expenditures were approved as presented.

Many people have contributed to the mission and work of QALC over the past year. Throughout the meeting, thanks were given for everyone's stewardship of time, presence and finances. There is much to celebrate from 2018 and much to look forward to in 2019 and beyond!

*—Jacqui Darroch,*  
Outgoing Council Secretary

## **2019 Congregational Leaders**

Names in **BOLD** are 2019 electees; an asterisk (\*) indicates incumbents who were not up for election.

### **Executive Committee:**

**President - Dan Squires** 1-year term

**Vice President - Jim Margard** 1-year term

**Secretary - Marjorie Dowd** 1-year term

**Treasurer - Myra Dittes** 1-year term

### **Council Members:**

**Pam Harmon** 2/1/19 – 1/31/20 (one year of unexpired term)

**Chris Roozen** 2/1/19 – 1/31/22 (second 3-year term)

**Al Shabino** 2/1/19 – 1/31/20 (one year of unexpired term)

Carol Ann Davis\* 2/1/18 – 1/31/21 (first 3-year term)

Mark Dibble\* 2/1/17 – 1/31/20 (second 3-year term)

Susan Evans\* 2/1/18 – 1/31/21 (first 3-year term)

Aaron Rugg\* 2/1/18 – 1/31/21 (first 3-year term)

**Nominating Committee:** (Three members are elected each year by the congregation and two others are members of the Church Council.)

**Barbara Bach** second 1-year term

**Marc Oplinger** second 1-year term

**TO BE FILLED** first 1-year term

### **Endowment Committee:**

**Susan Dibble** 2/1/16 – 1/31/19 (second 3-year term)

**Lisa Kjaer-Schade** 2/1/10 – 1/31/22 (first 3-year term)

**Rich Mathes** 2/1/16 – 1/31/19 (second 3-year term)

Aaron Boysen\* 2/1/18 – 1/31/21 (first 3-year term)

Dan Squires\* 2/1/17 – 1/31/20 (second 3-year term)

### **Synod Assembly Delegates**

**Female – Candy Mathes**

**Male – Rich Mathes**

**Young Adult – TO BE FILLED**

**Youth – TO BE FILLED**

### **LYONS Board Representatives:**

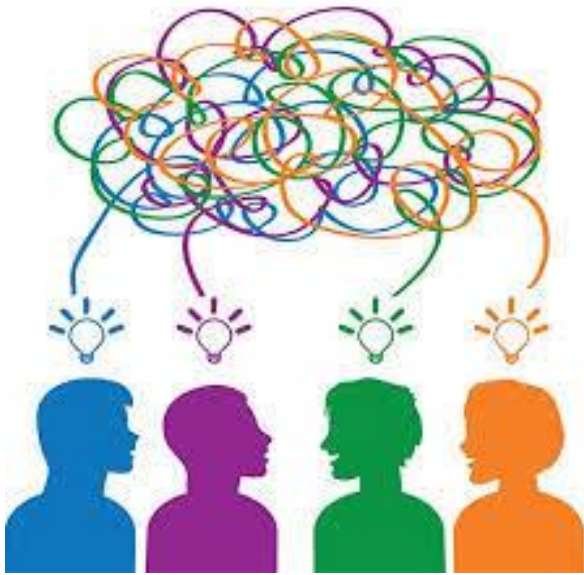
**Kirsten Erickson**

### **Personnel Committee:**

**Chair - Meg Shaw**

**Peggy Morgan – 3-year term**

**TO BE FILLED – 2-year term**



## WHAT IF?

It was a surprise to find out that, in my lifetime, there was a time when African-Americans were not allowed to get a library card! I'm so grateful that someone asked "What if ALL people get a library card?" and worked to make it happen.

The small group of **ForKids** is actively involved in learning and service, participated in eight service activities last year and certainly made a difference. But it's also important to look ahead.

**WHAT IF** service activities became intergenerational?

**WHAT IF** we worked together with people in neighborhood to serve a need in our community? **WHAT IF** we got to know our neighbors and worked together on something to make our community a better place?

Motivated by questions and ideas from Nancy Fulweiler and with encouragement from Pastor Dan, I met with the principal at Coe Elementary to get suggestions how we might get involved in activities for kids/with kids in the community. It was an insightful baby step.

Anyone curious to see where WHAT IF'S may lead? If so, would YOU join a focus group to get the ball rolling? We're looking for interest in exploring the neighborhood needs as well as meeting needs right here at QALC.

### At QALC:

1. To plan the Egg Hunt with a Difference, a service activity in which **ForKids** and community families participated last year.
2. To get to know the caregivers in our Nursery, and share ideas to make the Nursery environment safe and fun.

### In our neighborhood:

1. To research service activities available and consider how **ForKids** and neighbors could work together in service.
2. To identify a few needs in our neighborhood and consider ways to work with neighbors towards meeting them.

**Things can happen when people GET INVOLVED! These are short-term focus groups, and you're invited to sign up on the clipboard in the narthex to offer a little help!**

—Terry Anderson

## ForKIDS Happenings In February:

- February 10 Meet at 9:30 in John Room upstairs.
- February 17 No **ForKIDS** for President's Day Weekend.
- February 24 Meet at 9:30 in John Room upstairs.
- A survey will be sent out to all families with children to help us focus our children's ministry and keep in mind the needs of families.
- The Blessed to be a Blessing Jar will take a break. BUT keep on saving your change for the Egg Hunt with a Difference. There is a donation jar on the small table by the entrance to the sanctuary, and the change will be used to "buy" animals from ELCA Good Gifts.

# ANNOUNCEMENTS:

## **Hot Off the Press: New Church Directories!**

Our newly-updated Directory of Members and Friends is now available in the narthex and church office. Note the “Members and Friends”—that means, if you are active in our community but have not yet officially joined the church, you are welcome to be included! The directory helps us connect with one another, and is a service to us all when we need to match names and faces.

If you notice an error in your listing, or wish to be added to the directory, please contact Barbara in the church office ([admin@queenannelutheran.org](mailto:admin@queenannelutheran.org), 206-284-1960). And if you would like to have your photo added to that rather eclectic mix, just send it to Barbara—we already have a few late arrivals and missed submissions, so an addendum page will probably be out by month’s end!

—Barbara Bash  
Parish Administrator

## **2019 Bishop Election— Please Take the Synod Survey!**

In preparation for the nomination process and election of a Bishop at the May 17-19 Synod Assembly in 2019, please remember that the Northwest Washington Synod is engaged in a call process and keep the Synod, its leadership, nominees, voting members, and everyone involved in its ministry in your prayers.

The Synod would like congregational members to participate in its survey, and asks that you please complete it by February 16. [Synod Survey Link](https://www.research.net/r/NWWashingtonSBE) - (<https://www.research.net/r/NWWashingtonSBE>) This link has also been sent out in our Friday email updates.

Online at [www.lutheransnw.org/bishopelection](http://www.lutheransnw.org/bishopelection), you can find the following information:

- Bishop Unti’s letter stating that he will not be seeking re-election; (The Synod will offer appreciation for his service on Friday afternoon of the assembly.)
- Information about the Synod Assembly
- Process for Nominating & Electing a Bishop

## **Come on a Winter Outing!**

Our winter outing will be on Saturday, March 2. We’ll meet at Alpental at 9AM at the base of the ski slopes at the lodge. Snowshoeing, downhill skiing, or just enjoying hot chocolate in the lodge are available. Most of us will be snowshoeing, but some have said they will ski. I will lead a group on a 3 mile round-trip walk on the Snow Lake trail. That trail head is located at the north end of the main parking lot.

Snowshoe rentals are available at REI for \$26 for the day. You get an extra day to pick up the snow shoes and again later to drop them off at REI in addition to the day that you’ll be using the snowshoes. If you don’t want to deal with the REI zoo, try Second Ascent in Ballard. I recommend reserving your snowshoes in advance.

My skill level is beginner, so don’t be intimidated because the outing will be easy going. It’ll be kid-friendly, too. The goal is to get out in the fresh air with friends and have fun. —

Emmett Pritchard



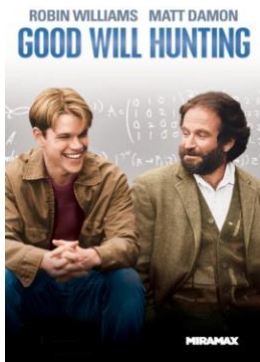
## Front Door Handle Update / Notes About Exiting



Many thanks to Al Mangold, who repaired the missing handle on the eastern narthex front door (using a new, larger screw). Now that we know how to access the screws—especially what hardware needs to be removed—we may be able to repair things sooner if we have another loose handle in the future.

Many of you are aware that both the front doors have not always fully locked when you exit the narthex. Thanks again to Al, the western door (right side as you exit the narthex) locks now seem to always engage. I suggest you exit using that western door to ensure the doors are locked. If you exit using the eastern door, and you expect it to be locked, please *push* on the door after you are outside to ensure the locks have engaged. Pushing, rather than pulling, might help extend the door handle's life.

—Rich Mathes, Property Committee



## Explore the Intersection of Faith & Film

### “Good Will Hunting”

Saturday, February 16, 2019 in the Fellowship Hall

4:00 PM snacks • 4:30 PM Watch the movie • 6:30 PM Discussion

Will Hunting (*Matt Damon*), a janitor at M.I.T., has a gift for mathematics, but needs help from a psychologist (*Robin Williams*) to find direction in his life. A touching tale of a wayward young man who struggles to find his identity, living in a world where he can solve any problem, except the one brewing deep within himself, until one day he meets someone who opens his mind and his heart. (1997) R rating. 2 hours 6 minutes.

Betty Merten, clinical psychologist, will introduce the film and lead discussion afterward. Dr. Merten was staff psychologist at the University of Oregon Student Health Center and Oregon Health Sciences University, and for many years had a private practice in Eugene. Her research on adolescent depression was featured in the *New York Times* and “The Today Show.”



## Visitation Team Meeting

The Visitation Teams will meet with Pastor Thom Wert and Pastor Dan on Sunday, February 10 at 12:30 in the Fellowship Hall.

## Cavort Among the Crocuses

A garden work party will take place here on the morning of Saturday, February 9. Contact Connie Wurm for details at [wurmcatchesbirds@gmail.com](mailto:wurmcatchesbirds@gmail.com).

*Photo courtesy of Rich Mathes and balmy January weather.*

## **SUNDAY MORNING ADULT FORUMS**

Our Adult Forums meet Sundays from 9-10 AM in the Conference Room from September through May. Our discussions span a variety of topics and issues both theological and current, and a stance of openness and questioning is encouraged. Please feel free to join us on any Sunday.

### **February Forums:**

2/03: **Youth homelessness and child sex trafficking** will be topics at Forum for two weeks. These are pervasive problems in our state, perhaps even in your neighborhood! Please join us and bring your questions, to learn more about these important issues. You may be surprised about some of what you hear. **Today, Jody Waits, Vice President of YouthCare**, will discuss aspects of youth homelessness in our community, and how YouthCare is serving critical needs in this area.

2/10: Pam Norick will join us to discuss child sex trafficking in our area. As President of Seattle-based **StolenYouth**, Pam will provide an overview of the phenomenon and ways that StolenYouth seeks to shut trafficking down, both independently and in collaboration with other organizations.

2/17: Join us for an update on **CORE Tanzania's Twegashe School project** including a presentation on the final school drawings by volunteer architect Marc Oplinger. The Banobis will also share a brief slideshow of their most recent trip to the village and the latest news on their progress in preparing for construction.

2/24 **"Missing Millennials: Why Aren't You in Church?"**—The landscape of American religion is changing dramatically. Millennials are dropping out of church, and new experimental types of Christianity such as the Emerging Church are coming to the fore. But what is the future of religion in America, and what role will Millennials play in that? Join us for the first session of this exciting 3-part series as Dr. Michael Zbaraschuk, Associate Professor of Religion at Pacific Lutheran University and editor of *The Emerging Church, Millennials and Religions*, returns to Queen Anne Lutheran..

### **The Beyond Faith Discussion Group Is Starting Up Again!**

While Pastor Dan will not be joining us for this chapter of Beyond Faith, members themselves are restarting the sessions beginning on **Wednesday, February 6th**. The group will meet for the four Wednesdays in February, pause during Lent, and hopefully resume after Easter. For the four weeks of February the conversation will focus on a new book by Sallie Tisdale, *Advice for Future Corpses And Those Who Love Them*. It's a practical perspective on death and dying. The meeting time and place have not changed, 7:00 in the Conference Room for the next four Wednesdays. All are welcome!

### **After-Word Continues on Tuesdays**

Our "After-Word" Bible Study meets each Tuesday at noon. Bring your lunch and join us in the Conference Room to ask questions about and deepen your understanding of each Sunday's Scripture readings and the sermon.

# INQUIRING MINDS WANT TO

## **There's a Members Area on our website????**

Yes! In addition to the public sections of our [queenannelutheran.org](http://queenannelutheran.org) website, there is a members' section with information you may find very useful.

The Members Area is in the bottom right corner of our website. **It requires a login, which you can get or update by contacting Barb Bash in the church office.**

What will you find in the Members Area?

- The Church Directory of Members and Friends, just recently updated with photos added to our contact information.
- The QALC Constitution
- Annual Reports of our congregation
- Forms for getting reimbursed or for reserving a room in the building
- And more ...

## **What's going on at Church Council?**

You can always ask any council member (see page 4 for our 2019 Council members) or Pastor Dan!

And, you can read council materials yourself. Monthly financial reports, council meeting minutes and pastor's report are posted on the bulletin board near the sacristy and the side door into the sanctuary.

Check them out!

## **What Happens to My Prayer Request?**

**Do you have a prayer request?** Write your request on a blue pew card during worship, and place it in the offering plate or give it to the pastor. You may also call or email the church office to leave a prayer request, and it will be given to Pastor Dan. When we receive a prayer request, it is helpful to know if you would like this prayer to be included during Sunday worship in the weeks following, and/or if you would like the request sent out to the church e-mail Prayer Chain. Pastor Dan can reach out to you when he sees your request, and we will not make a request public unless you ask to do so.

**Please help us keep prayer requests up to date.**

If not updated, prayer requests will be considered for removal after four weeks. We realize some hardships are ongoing, and renewing a request for prayer in such a case is supported. You can renew or discontinue requests by contacting Pastor Dan or the office.

**Please obtain permission** from the person concerned before publishing his or her name.

## **What's the Prayer Chain?**

It is simply an e-mail group of members who have asked to receive prayer requests, so that they may each include them in their personal prayers at home, and keep apprised of members who have hardships. **If you would like to become part of our Prayer Chain, simply call or email the church office and Barb will add your name to that e-mail group.** (And if you would like to be part of the Prayer Chain but don't use email, let us know and we'll arrange for you to get a call.)

## Men's Ministry

We invite men of all ages to join in conversation and service to the community. Our quasi-monthly meetings on Saturday mornings include discussion of scriptural topics, how they relate to our 21st century lives, and what we can do to live as Christians in the world.

**February 9** meeting—08:30 AM in the Conference room. Short discussion on what we as individuals might do differently, or the same, for Lent this year. Then we will work together to assemble LWR personal care kits. Kit assembly starts at 9:00 AM. After we finish, around 10am, anyone who wants to help the outside grounds cleanup is welcome to stay.

**March 16** meeting —08:30 AM in Fellowship Hall. Short followup discussion on February thoughts. Then we will assemble school kits for LWR ingathering May 3rd & 4th. Assembly starts at 9:00am

**April 20** meeting—09:30 AM in Fellowship Hall – set tables, chairs for Easter Breakfast April 21st.

**Easter April 21st** —We will cook and serve Easter Breakfast.

**Spring LWR Ingathering** May 3rd/4th at Our Redeemers' Lutheran Church, located at 2500 NW 85th. If you can load boxes or just direct cars and trucks, please let Rich know. [lwrmathes@aol.com](mailto:lwrmathes@aol.com).

—Rich Mathes



## Events: Lutheran Youth of North Seattle

### It's Time to Plan for 2019 Summer Trips!

**Middle school youth** (current 6th-8th grade) are invited to join us going to Camp Lutherwood in Oregon.

**High school youth** (current 8th-12th grade) can sign up to go to Idaho Servant Adventures, a ministry of Lutherhaven. **Current 8th grade youth** are able to choose which trip they would like to participate in, that's not a typo! If **current 5th graders** are interested in the middle school trip, please talk to Bryant to see if it would be a good fit for your youth. Information and sign up is available on the LYONS website ([roaringlyons.org](http://roaringlyons.org)). Please sign up by March 17.

### High School Snowshoeing with Peak 7

7:00am-4:00pm (ish) Wednesday, February 20

Meet at SJU, cost \$45

Looking for a great way to get up into the snow during mid-winter break? Join us for a day of snowshoeing at Snoqualmie Pass with Peak 7 Adventures' guides leading the way. Friends welcome! Please sign up on the LYONS website.

### Middle School GO! Night

Meet/return to St John United

Friday March 1-2 6:00pm-7:30am, cost \$45 Join us for the annual middle school all-synod over-nighter! This year, St Matthew's Lutheran Church in Renton is hosting us. Activities include going to the Family Fun Center, Flying Circus, ice skating, worshiping together, and ending the night watching a movie at the synod's biggest slumber party! As always, friends are welcome to join! Sign up by February 10.

## Symphonies of Psalms Concert

A "Symphonies of Psalms" concert will be presented by the Seattle Chamber Singers on Saturday, February 9 at 7:30 PM at the First Free Methodist Church (just down the road on the SPU campus.) The program spans 1000 years of music including well-known composers like Dvorak and Stravinsky, but also lesser-known and contemporary works by Heinrich Schütz and Caroline Shaw. There is a concert poster on our narthex bulletin board. Tickets and more information about the program can be found at:

[http://osschs.org/concerts/2019\\_02\\_09](http://osschs.org/concerts/2019_02_09)

How often have we looked forward to a snow day, when you can't get out and everything comes to a stop? You think, "If only I had one day without any commitments—no work, no appointments. I could get so much done!" An email arrived in my mailbox from the WELCA—Women of the Lutheran Church of America. I thought the thought was very appropriate for our busy lives:

*"We know our giving is in our serving one another in community. Centering our life means we won't get to everything on our to-do list. It means we will trust God's guidance and give up, humbly, our most earnest agendas."*

## QALCW Lenten Brunch

Saturday, March 9 at 9:30 a.m.

### Fellowship Hall

Come share in Food, Fellowship  
and Preparation for  
the 40 days of Lent

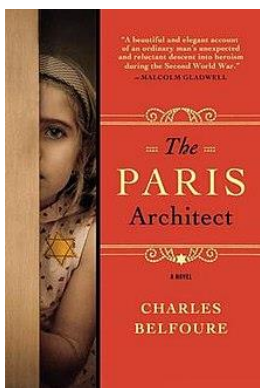
Come share in Food, Fellowship and Preparation for the 40 days of Lent. Please join us for a time of reflection at the Lenten Brunch on Saturday, March 9 at 9:30 AM in the Fellowship Hall. All women in our church community are invited. People often ask how they may help at an event/activity and often the answer is, "Just take the time to join us." For a community to be, we need YOU to be a part of it. We are still planning the program and the food. Your help would be greatly appreciated. Talk to any of the women listed below if you would like to help. Thank you to each one of you that helps to make this annual event possible. We are looking forward to seeing you there!

This month's Women's Bible Study is based on John 3:1-10. We will discuss both Nicodemus and the Samaritan women. The **Evening Circle** that meets at Barbara Bach's house has moved its meeting date to the 4th Tuesday of each month at 7 PM. This month's meeting will be on February 26. **Northern Lights**, our north-end Circle, will next meet on Monday, March 11 at 7 PM. At the Houle's home. Contact Dolly Smith at ohana3@comcast.net for details or directions.

The two groups that meet for sewing mission quilts are back in full swing. **PDQs** meet on the third Tuesday of each month starting between 5 and 6 PM. Dinner is provided. This month, that's on February 19. **Sewing and Service** meets every Wednesday morning at 9:30 (coffee at 10:30). Come check us out!

Donations needed for Baby Care Kits: Socks, 6 - 18 months size.

Your Women's Committee,  
*Sallie Wilson, Pat Sobeck, Lisa Ondrejcek and Candy Mathes*



## February Book Group — *The Paris Architect*

Book Group meets in the narthex on the last Monday of each month. We want to make it clear that all are welcome at our meetings, men and women, old or young. Everyone is invited! **Anyone** who reads or wants to listen to the discussion is welcome, and it's okay if you didn't have time to read one month or can't always attend!

The Queen Anne Book Group (open to all) will meet on Monday, February 25 at 7 PM in the church narthex to discuss *The Paris Architect* by Charles Belfoure. Discussion will be led by Candy Mathes.

During World War II Lucien Bernard, an architect living in Paris, France, is offered a large amount of money to design hiding places for Jews being hunted by the Nazis. He desperately needs the money to make a living though he knows that if caught, he will be killed.

## Queen Anne Book Group Selections for 2019:

Date	Title/Author	Discussion Leader
January 28	<i>The Soul of America: the Battle for Our Better Angels</i> by Jon Meacham	Nancy F.
February 25	<i>The Paris Architect</i> by Charles Belfoure	Candy M.
March 25	<i>A Spool of Blue Thread</i> by Anne Tyler	Jackie T.
April 29	<i>Hillbilly Ellergy</i> by J. D. Vance	Barbara K.
May 20	TBD	Georganne R.
June 24	<i>All Seattle Reads Selection (TBA)</i>	Sharon L.
July 29	<i>Book Selection Gathering for 2020</i>	at Cathy U.'s home
August 26	<i>Summer Hours@the Robbers Library</i> by Sue Halfren	Barb B.
September 30	<i>Everything Happens for a Reason</i> by Kate Bowler	Cathi U.
October 28	<i>The Immortal Irishman: The Irish Revolutionary Who Became an American Hero</i> by Timothy Egan	Joan K.
November 25	<i>The Great Alone</i> by Kristen Hannah	Karen M.
December	<i>No Book Club</i>	

## THANKSGIVINGS:

In January we mourned the passing of Don Sobeck, who died on New Year's Eve. Many thanks to those who gave support to the Sobeck family, especially to those who helped plan and assisted at the well-attended memorial service and who graciously hosted the lovely reception.



Thanks also to those who organized and participated in the clothing drive for Queen Anne Helpline. The Social Concerns Committee, spearheaded by Jim Margard, and Terry Anderson and all the **ForKids** kids, oversaw a bake sale fundraiser and (at press time—more donations are still coming in—) the collection of 183 pairs of socks, 12 coats, 5 scarves, 31 pairs of gloves and 25 hats!

Our Annual Meeting on January 27 was supported by a busy crew of lunch-providers and clean-up volunteers, and thanks are also due to all the committee chairs and church leaders who provided reports, crunched numbers, created proposals, and led the discussion—and we are grateful especially to all those who participated by attending the meeting!



### **"Manna & Mercy in the Wilderness"**

Our Redeemer Lutheran Church invites us to participate in these sessions presented by Dr. Fred Niedner. There is no cost, outside of a freewill donation for lunch. Our Redeemer (the same church our LWR Ingatherings take place) is located in Ballard at 2400 NW 85th St. and can be contacted at 206.783.7900.

### **TEACHER IN RESIDENCE - Dr. Fred Niedner - Friday, February 8 - Sunday, February 10**

Fred teaches regularly at Holden Village and was a professor of biblical theology for 40 years at Valparaiso University. He is beloved for his incredible gift of explaining the culture and context of Bible stories, to reveal how human they are, and the depth of grace existing within them.

### **"MANNA & MERCY IN THE WILDERNESS"**

This February, in the wilderness of winter, and also in the wilderness of our unsettling and confusing times, Fred will teach and preach on the great biblical story of how the people of Israel wandered for a generation in the wilderness, from bondage to freedom. Throughout, they complained and threatened to return to slavery, experiencing both the presence and absence of God. This is our story, too. It offers us guidance, resources and promises for our own personal and community wilderness trek.

#### Schedule:

#### **Friday, February 8:**

6PM ~ Welcome Reception and Appetizers

7PM~ Session 1: How to Recognize a Wilderness When You've Stumbled into One

#### **Saturday, February 9:**

10AM ~ Session 2: Are We Alone Here? The Words and the Word in the Wilderness

Noon~ Lunch - Provided; Free-Will Donation (suggested \$10)

1PM ~ Session 3: Following Christ through the Wilderness, Becoming Part of God's "Backside"



## *Bishop's Message*

*By the Rev. Kirby Unti, Bishop, NWWA Synod*  
From the February 2019 edition of *The Spirit*

### **Connecting the Dots**

I have thought many times about my trip last year to Standing Rock to stand in solidarity with our Native American brothers and sisters as they fight to protect their lands and waters.

I will never forget how the Standing Rock people spoke of their sacred land. Their relationship with the land is very personal. They understand the earth is their mother. The soil is the womb of the mother. The rivers, lakes and sea are the amniotic fluid. They were there with tribal representatives from around the world not to protect their property, but to protect their mother's womb and the fluids that make for life.

It was so clear to me how they live in relationship with the land and water. Relationship for them is about seeing themselves as a part of the earth—not separate from it or in any way above it. Their relationship with the land is very mutual—each knowing they rely upon the other for their very existence.

Compare that to how we have treated the earth in the Western world. Often, we see the earth as an object that we are free to exploit. The earth is there for our use and benefit. It becomes our property and our possession, and we have monetized every part of it.

It is only in recent times that we come to the realization that we are severely harming the earth and may be pushing her beyond her capacity to heal and renew herself. The rate of decline of the polar ice cap and the increase of carbon dioxide into the air is alarming. We are noticing the damage in the rising of both temperatures and the seas. Our Lutheran Church in Shishmaref, Alaska is faced along with the whole town with having to relocate as the seas continue to rise.

Luther would find this to be very disturbing because he believed so strongly that God is embedded in all the creation—even in the tiniest tree. Just as we are called to love our neighbor, we are called to see the creation as sacred and to be in relationship with it.

When we do not honor our relationships, we cease to live long in the land.

I am starting to connect the dots—I see that we in the West have not only become separated from the land, we have become separated from our neighbors. I believe this separation is one of the leading forces that is dismantling the church as we have known it.

In too many cases we no longer see our neighbors as subjects to be highly regarded. We see our neighbors as objects to be used for our benefit. Exploitation not only will destroy the earth, it will destroy the church and the communities in which we live.

Our Living Local movement invites us to overcome the gap that exists between us and our neighbors. The movement invites us to come to know our neighbors. It is all about entering mutual relationships of caring and serving together.

One of the classic definitions of sin is separation—when we become separated from God and neighbor and are turned in on ourselves.

Might I suggest we all need to get our hands in the dirt and discover once again Mother Earth. Might we care for her, deeply respect and honor her, and learn how to live in relationship with her. And might we come to know our neighbors, care for them, deeply respect and honor them and learn how to live in relationship with them. +BKU

# SERVING IN FEBRUARY

*Interested in being an usher or worship leader? Contact Pastor Dan or Barb in the office to volunteer.  
New altar flower and coffee-hosting sign-up sheets for 2019 are now out in the narthex.*

## **Altar Guild:**

Emmett Pritchard

## **Offering Counters**

- 3 Lindley Williamson and Sally Villaluz
- 10 Cathi Unseth and Michael Banobi
- 17 John Reese, Vicky Pugil, and Barb Bach
- 24 Bridget Boysen and Barb Bach

## **Ushers: (8:00 AM)**

- 3 NEEDED
- 10 NEEDED
- 17 Ken Hockman
- 24 Ken Hockman

## **Ushers: (10:30 AM)**

- 3 Jim Margard; Denny Alfson  
with Will Feldmann, Jenna Del Vento and Lucy Fink
- 10 Jim Margard; Denny Alfson
- 17 Don Thomas; Denny Alfson
- 24 Don Thomas; Denny Alfson

## **Lector/Communion Server(8:00 AM)**

- 3 Dan Squires
- 10 Lisa Chille
- 17 Jan & Linda Olson
- 24 Mei Le and Dolly Smith

## **Assisting Minister (10:30 AM)**

- 3 Kirsten Erickson
- 10 Joan Kavanaugh
- 17 Carol Ann Davis
- 24 Rich Mathes

## **Flowers on the Altar**

- 3 Karen McCullough
- 10 Meg Shaw
- 17 NEEDED
- 24 NEEDED

## **Sunday Coffee Hosts: (8:00 AM)**

- 3 Smith Family
- 10 Jan & Linda Olson
- 17 NEEDED
- 24 Smith Family

## **Sunday Coffee Hosts: (10:30 AM/10:00 AM)**

- 3 Phillips Family
- 10 Fink Family
- 17 NEEDED
- 24 NEEDED

**Deadline for the March Quill is Wednesday, February 20.**

### **CONTACTS for QALC STAFF:**

Pastor Daniel Peterson

*Pastor Peterson's contact outside of office hours, emergency only: Text 253-230-9695*

Interim Cantor David Lepse

Children's Ministry Coordinator, Terry Anderson

Parish Administrator Barbara Bash

Sexton John Bryant

Counselor Sarah Tatterson

LYONS Director, Bryant Williams

### **Office Phone 206/284-1960**

[pastor@queenannelutheran.org](mailto:pastor@queenannelutheran.org)

[cantor@queenannelutheran.org](mailto:cantor@queenannelutheran.org)

[forkids@queenannelutheran.org](mailto:forkids@queenannelutheran.org)

[admin@queenannelutheran.org](mailto:admin@queenannelutheran.org)

[sexton@queenannelutheran.org](mailto:sexton@queenannelutheran.org)

[statterson@lutherancounseling.net](mailto:statterson@lutherancounseling.net)

[lyonsdirector@roaringlyons.org](mailto:lyonsdirector@roaringlyons.org)

# February 2019

Sunday	Monday	Tuesday	Wednesday	Thursday	Friday	Saturday
					<b>1</b>	<b>2</b> 10:30am Alanon Women 3:00pm Community Music Jam 7:00pm AA-Shanty Trudgers
<b>3</b> Family Sunday 8:00am Worship 9:00am Adult Forum 10:30am Worship	<b>4</b> 7:00pm 12-Step FA	<b>5</b> 12:00pm After-Word 6:00pm Executive Committee	<b>6</b> 9:30am Sewing & Service 7:00pm Beyond Faith 8:00pm AA/Alanon/Alateen	<b>7</b> 7:00pm Chancel Choir	<b>8</b>	<b>9</b> 8:30am Men's Ministry 10:30am Alanon Women 7:00pm AA-Shanty Trudgers
<b>10</b> 8:00am Worship 9:00am Adult Forum 9:30am ForKIDS 10:30am Worship 12:30pm Visitation Team Mtg.	<b>11</b> 7:00pm 12-Step FA 7:00pm ALZ Caregiver's Support	<b>12</b> 12:00pm After-Word 7:00pm Church Council	<b>13</b> 9:30am Sewing & Service 1:30pm Girl Scouts 2:30pm Staff Meeting 3:30pm Personnel Mtg 7:00pm Beyond Faith 8:00pm AA/Alanon/Alateen	<b>14</b> 5:30pm Girl Scouts 7:00pm Chancel Choir	<b>15</b>	<b>16</b> 10:30am Alanon Women 4:00pm Faith and Film 7:00pm AA-Shanty Trudgers
<b>17</b> 8:00am Worship 10:30am Worship	<b>18</b> 7:00pm 12-Step FA	<b>19</b> 12:00pm After-Word 5:30pm PDQs	<b>20</b> 9:30am Sewing & Service 3:00pm Staff Meeting 7:00pm Beyond Faith 8:00pm AA/Alanon/Alateen	<b>21</b> 7:00pm Chancel Choir	<b>22</b>	<b>23</b> 10:30am Alanon Women 7:00pm AA-Shanty Trudgers
<b>24</b> 8:00am Worship 9:00am Adult Forum 9:30am ForKIDS 10:30am Worship	<b>25</b> 7:00pm 12-Step FA 7:00pm QA Book Group	<b>26</b> 12:00pm After-Word 7:00pm QALCW Circle	<b>27</b> 9:30am Sewing & Service 1:30pm Girl Scouts 3:00pm Staff Meeting 7:00pm Beyond Faith 8:00pm AA/Alanon/Alateen	<b>28</b> 5:30pm Girl Scouts 7:00pm Chancel Choir		