

TWENTY-SECOND SUNDAY AFTER PENTECOST

October 24, 2021

10:30 AM



↑ = *Stand* **C**: *Congregation* **A**: *Worship Assistant* **P**: *Presiding Minister*

Hymns may be found in the red hymnals in the pews.

Large-print hymns are available in the narthex as you enter.

Quiet Bags with books and soft toys, or Doodle Bags with markers
are also available in the narthex for children.

Prelude

Variations on PRECIOUS LORD
Sylvia Berg Oines (b. 1953)

Variations on FAITHFULNESS
Pam Gervais (b. 1960)

Welcome

↑ Gathering Hymn

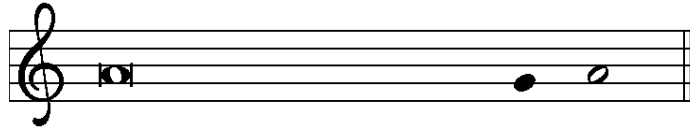
Great Is Thy Faithfulness
Evangelical Lutheran Worship Hymn 733

↑ **Greeting**

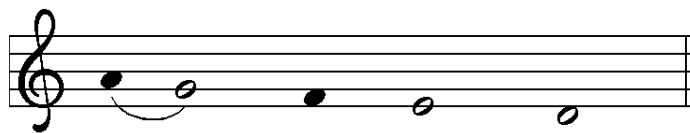
P: The grace of our Lord Jesus Christ, the love of God,
and the communion of the Holy Spirit be with you all.

G: And also with you.

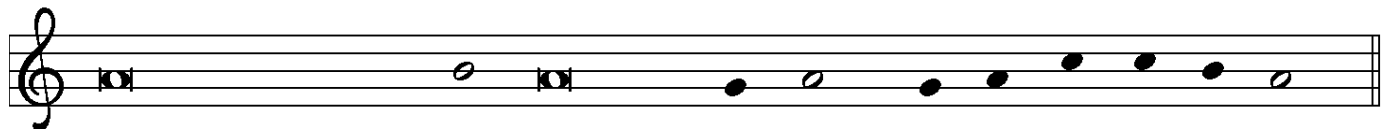
↑ **Kyrie**



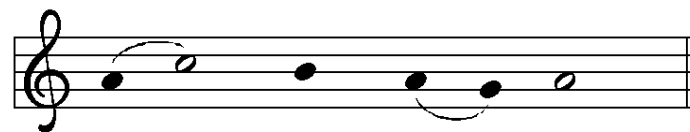
In peace, let us pray to the Lord.



Lord, have mer - cy.



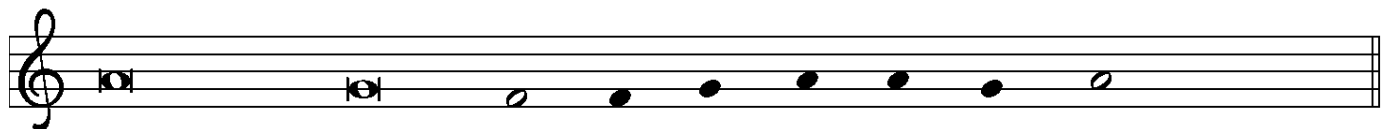
For the peace from a-bove, and for our sal - vation, let us pray to the Lord.



Lord, have mer - cy.



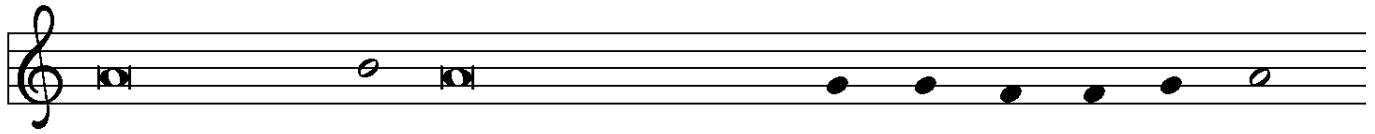
For the peace of the whole world, for the well-being of the church of God,



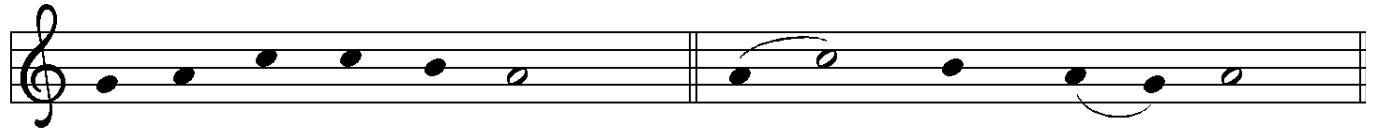
and for the unity of all, let us pray to the Lord.



Lord, have mer - cy.



For this holy house, and for all who offer here their wor-ship and praise,



let us pray to the Lord. Lord have mer - cy.



Help, save, comfort, and de - fend us, gra-cious Lord. A - men.

↑ Hymn of Praise



P: This is the feast of vic-to-ry for our God. Al - le - lu - ia.



All
1 Wor - thy is Christ, the Lamb who was slain, whose blood set us



free to be peo-ple of God. Pow - er and rich - es and wis - dom and



strength, and hon - or and bless-ing and glo - ry are his.



Refrain
This is the feast of vic-to-ry for our God. Al - le - lu - ia.

2 Sing with all the peo - ple of God and join in the

hymn of all cre - a - tion: Bless - ing and hon - or and glo - ry and

might be to God and the Lamb for - ev - er. A - men.

Final refrain

This is the feast of vic-to-ry for our God, for the Lamb who was slain

has be - gun his reign. Al - le - lu - ia. Al - le - lu - ia.

↑Prayer of the Day

P: Eternal light, shine in our hearts.
Eternal wisdom, scatter the darkness of our ignorance.
Eternal compassion, have mercy on us.
Turn us to seek your face,
so that we may follow you as true disciples and live for others
as you did for us in Jesus Christ, our Savior and Lord.

G: Amen.

First Reading

Jeremiah 31:7-9

A: Word of God, Word of life.

G: Thanks be to God.

Second Reading

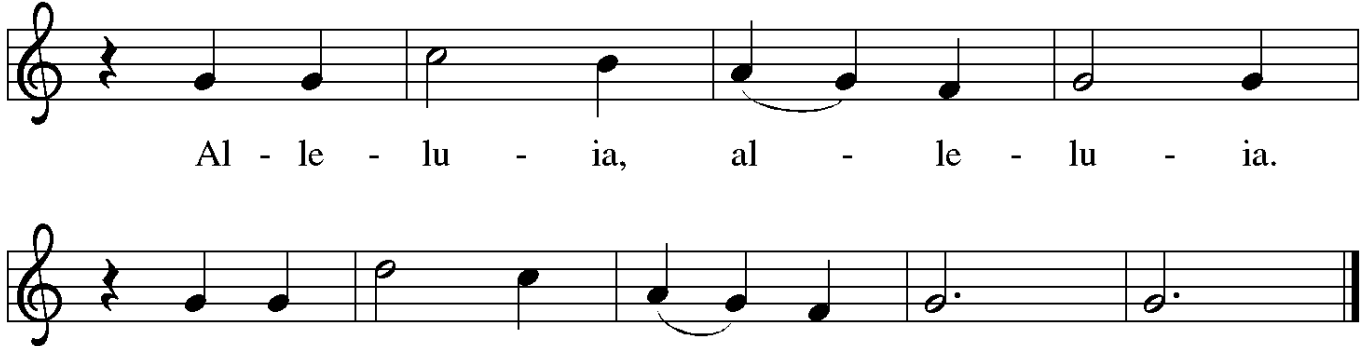
Hebrews 7:23-28


A: Word of God, Word of life.

G: Thanks be to God.

↑ Gospel Acclamation

Preceding and following the verse, the assembly sings the Alleluia:

G: 
Al - le - lu - ia, al - le - lu - ia.


Al - le - lu - ia, al - le - lu - ia.

↑ The Holy Gospel

Mark 10:46-52

P: The Gospel according to St. Mark, the tenth chapter.

G: Glory to you, O Lord.

Following the reading

P: The Gospel of the Lord.

G: Praise to you, O Christ.

Sermon

The Lost Disciples of Jesus
Pastor Dan

↑ Hymn of the Day

Precious Lord, Take My Hand
Evangelical Lutheran Worship, Hymn 773

↑ Apostles' Creed

G: I believe in God, the Father almighty,
creator of heaven and earth.

I believe in Jesus Christ, God's only Son, our Lord,
who was conceived by the Holy Spirit,
born of the virgin Mary,
suffered under Pontius Pilate,
was crucified, died, and was buried; he descended to the dead.
On the third day he rose again;
he ascended into heaven,
he is seated at the right hand of the Father,
and he will come again to judge
the living and the dead.

I believe in the Holy Spirit,
the holy catholic church,
the communion of saints,
the forgiveness of sins,
the resurrection of the body,
and the life everlasting.
Amen.



Blessing of the Quilts and Kits

- P:** God, our neighbors around the world are in need of hope. Your Spirit is a mighty force, your whispers of hope bring reassurance into the world. Open our hearts and hands to feel your presence around us, in our neighborhoods and with others across the world.
- G:** **Jesus, help us speak words of hope to our neighbors.**
- P:** God, we give you thanks for the pieces of fabric, thread, sewing machines, and the items collected for the kits. May their presence be a sign of hope, may these quilts wrap our neighbors in unending love, and may these kits give strength to those who struggle against hardship.
- G:** **Jesus, help us reach out in hope to our neighbors.**

P: God, we give thanks for all the hands that fashioned hope into a quilt, for the hands that collected and sorted, for the hands that continually open wider so that no one feels left out. Bless our quilting ministry at Queen Anne Lutheran and all who share in it.

C: **Jesus, help us see hope in our neighbors.**

P: God, we ask you to guide the staff and partners at LWR. May their voices and hands be a beacon of hope. Keep them safe. Keep them filled with your strength and perseverance. Be with those who pack and deliver these kits.

C: **Jesus, help us share a taste of hope with our neighbors.**

P: God, be with our neighbors who will receive these gifts. Whether we know their names or where they live, they are our neighbors, made in your image as we are, children of one humanity. We pray all this in the name of Jesus, God's loudest whisper of hope and healing to the world.

C: **Amen.**

P: Recognizing God's abundant hope, let us be a sign of hope to our neighbors near and far: offering hands to hold, and compassion from our hearts. In the name of the Father, † the Son, and the Holy Spirit.

C: **Amen.**

↑ **Prayers of the Church**

A: . . . Lord, in your mercy,

C: **hear our prayer.**

↑ The Great Thanksgiving

The Lord be with you. And al - so with you.
Lift up your hearts. We lift them to the Lord.
Let us give thanks to the Lord our God.
It is right to give our thanks and praise.

The image shows four staves of musical notation in G major (one sharp) and 4/4 time. Each staff contains a melody line with lyrics underneath. The lyrics are: 'The Lord be with you. And al - so with you.', 'Lift up your hearts. We lift them to the Lord.', 'Let us give thanks to the Lord our God.', and 'It is right to give our thanks and praise.' The music consists of quarter and eighth notes, often beamed together, with some phrases ending in a half note.

☐: It is indeed right, our duty and our joy . . .
. . . praise your name and join their unending hymn:

↑ Sanctus

Ho - ly, ho - ly, ho - ly Lord, Lord God of light and life,
heav'n and earth are full of your glo - ry.
Ho - san - na in the high - est. Bless - ed is he who comes
in the name of the Lord. Ho - san - na in the high - est.

The image shows four staves of musical notation in G major (one sharp) and 4/4 time. Each staff contains a melody line with lyrics underneath. The lyrics are: 'Ho - ly, ho - ly, ho - ly Lord, Lord God of light and life,', 'heav'n and earth are full of your glo - ry.', 'Ho - san - na in the high - est. Bless - ed is he who comes', and 'in the name of the Lord. Ho - san - na in the high - est.' The music features a mix of quarter, eighth, and half notes, with some phrases ending in a half note.

↑ Words of Institution

↑ Lord's Prayer

Ⓟ: Lord, remember us in your kingdom and teach us to pray:

☒: **Our Father in heaven, hallowed be your name,
your kingdom come, your will be done,
on earth as in heaven.**

Give us today our daily bread

and forgive us our sins

as we forgive those who sin against us.

Save us from the time of trial and deliver us from evil.

**For the kingdom, the power, and the glory are yours,
now and forever.**

Amen.

Holy Communion – All baptized Christians who seek a taste of the new and forgiven life in Jesus Christ are welcome to receive the sacraments. We confess and believe that Christ in his risen form is truly present in the Sacrament of bread and wine and that by sharing in this meal, we share in Christ's resurrection.

The ministration of the Sacrament will take place in the pews with individual elements. These are available as you enter; if you missed picking one up and need one, please signal an usher now with a raised hand.

When invited to commune, peel off the bottom tab to eat the bread; peel off the top tab to drink the wine. The waste can go in the paper bag found in each pew.

↑ Invitation to the Table

Ⓟ: God invites you to this meal of grace.
Receive the food of forgiveness.

Agnus Dei



Lamb of God, you take a-way the sin of the world; have mer-cy on



us. Lamb of God, you take a-way the sin of the world; have



mer-cy on us. Lamb of God, you take a-way the



sin of the world; grant us peace, grant us peace.

Post Communion Prayer

☩: Jesus, Bread of Life,
we have received your food of forgiveness
in the bread and wine of Holy Communion.
As you have nourished us in this meal,
accepting us before you without condition,
strengthen us to love one another as you first loved us.

☩: Amen.

Announcements

↑ Benediction

☩: Now may the Lord bless you and keep you.
May the Lord make his face shine upon you and be gracious to you.
May the Lord look upon you with favor and grant you peace.
In the name of the Father, and † of the Son, and of the Holy Spirit.

☩: Amen.

↑ Sending Hymn

Rise, O Church, Like Christ Arisen
Evangelical Lutheran Worship, Hymn 548

↑ Dismissal

A: Go in peace. You are the body of Christ.

G: **Thanks be to God.**

Please remain seated until the ushers dismiss you from your pew, in order to maintain social distancing as we exit. On your way out, put your bulletin and hymns back in the baskets on the table if you do not want to take them with you. Offerings may be put in the offering plate as you exit. Pastor Dan will greet you. You may remain in fellowship with one another as long as you like; please respect others' need for social distancing.

Postlude

Variations on SURGE ECCLESIA
Ronald A. Nelson (1927–2014)

About today's music

The three hymns for the 10:30 service (including the Hymn of the Day, which is the 8:00 hymn) are featured in today's prelude and postlude. The prelude includes variations on tunes from today's hymns that come to us from the American gospel tradition. The variations on PRECIOUS LORD are by Sylvia Berg Oines (b. 1953), who currently serves as organist at Bethany Presbyterian Church, less than a mile from us. The setting of FAITHFULNESS is by Pam Gervais (b. 1960), a family farmer near Tracy, Minn. who holds degrees in piano performance and composition. Today's postlude, based on the Sending Hymn (10:30), is by Ronald A. Nelson (1927–2014), who is also the composer of the music for Holy Communion we sing today from Setting Four in *Evangelical Lutheran Worship*.
– Cantor Kyle

Evangelical Lutheran Worship, Settings Four and Nine © 2006 Augsburg Fortress. Reprinted with permission under License 26521. All rights reserved. Reproduced by permission for local use only. "Christ cures blind Bartimaeus." Stained glass window from Washington DC's National Cathedral. Photo cr. Lawrence OP via flickr.com. Free license through Wikimedia Commons.