

The Quill

J A N U A R Y 2 0 2 2



Queen Anne

LUTHERAN CHURCH

Inside this issue

From The Bishop.....	3
Annual Meeting.....	4
Growing Our Ministry Fund.....	4
Ridwell Update	5
QA Book Group.....	6
December Worship	6
Forum Calendar	7
QALC Women's Ministry	8
The Holden Dispatch	9
Calendar	12

The Quill can be viewed in full color online at queenannelutheran.org. If you would prefer to have a copy **mailed to you** each month, just contact the church office at 206-284-1960. Likewise, if you receive The Quill in the mail and would prefer **not** to, just contact the office.

Weekly, we are also mailing bulletins and sermon transcripts to households that are unable to attend church. If you would like to receive such a mailing, please let us know. And if you do **not** need to get the bulletin by mail, give us a call as well!

Please Note: All mail to the church must be sent to this address:

Queen Anne Lutheran Church
P.O. Box 17029
Seattle, WA 98127-0729



During this winter, as many continue to grapple with—and be discouraged by—the continuation of the pandemic, isolation, discontent, and loneliness, we might feel that our relationships are not as strong as they once were—with family and friends, with colleagues and co-workers, and with those in our church.

Recently I read a book called *Tempered Resilience* by Tod Bolsinger. While I wasn't enthralled with the whole book, I did resonate with one visual that he used and perhaps you will find helpful in this time, too. He writes about how our different relationships help us in our resilience and in our on-going ability to adapt. On page 112 Bolsinger writes, "To flourish in ministry or other forms of social leadership, leaders need to be conscious of at least three different contexts, and the relationships needed to flourish in those contexts, 'front stage, backstage, and offstage.'"

The Front Stage is the public face that we show to the world. It is the place where "performance" happens. It is critical to have trustworthy colleagues or teammates where you are able to be yourself. These relationships could include peers and teammates, partners, and colleagues. An example from scripture would be the disciples. Who would you include in your life?



The Back Stage is the place to support and nurture you in your "front stage" work. Good front stage work depends on lots of time backstage analyzing and thinking about the work that is being done, learning from the lessons of success and failure from others, and especially, gaining perspective from experienced leaders. In his book Bolsinger cautions, "Backstage relationships don't happen because of others. They happen because of you." (p. 116) In other words, you might have to seek out "backstage people." Backstage relationships include therapists, coaches, mentors, spiritual directors, pastors, and more. An example in scripture would be David listening to Samuel, or Moses listening to his father-in-law Jethro, or Ruth listening to Naomi. Who would you include in your life?

The Off Stage are the people that you are emotionally closest to and who are your confidants. As Bolsinger writes, "The quality of your relationships with other people influences how emotionally resilient you can be in the face of an emotional or physical crisis. In general, the more quality social support you can draw upon from family and friends, the more flexible and resilient you can be in stressful situations." (p. 120) An example in scripture would be Elizabeth and Mary. Who would you include in your life?

So, I'm wondering, how are doing in these three areas? Are your relationships strong "front stage, backstage, and off-stage"? Do you have good connections? Where could you form deeper connections? Where do you need help in forming new relationships?

I'd love to hear from you how we can be a more connected church community, how we can support one another, and how resilience can be built up by forming and growing relationships.

I know this is a difficult and frustrating time for many. I feel it, too. May you feel connected with one another. May you feel upheld by one another. And, especially, in this Epiphany season, may God's presence, love and grace be made known to you.

✝ Bishop Shelley Bryan Wee
bishop@lutheransnw.org

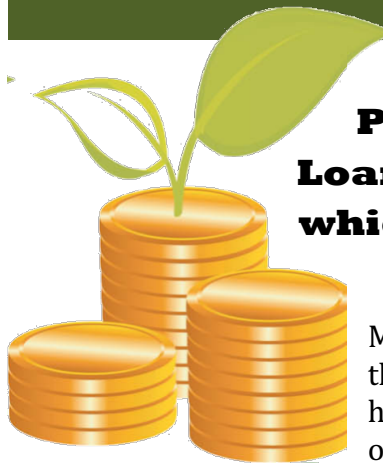
Annual Congregational Meeting January 30

We will be holding our Annual Congregational Meeting on Sunday, January 30. It will be held in-person in the sanctuary after our 10:30 worship; the meeting will also be accessible via Zoom. More details will be sent out to all members before January 20, and our Annual Report will be available ahead of time also. Watch your weekly emails or mailed announcements for the details and Zoom links.

The purpose of the annual meeting of the congregation is to review and celebrate the previous year's accomplishments, with reports from the pastor, the president and treasurer, and others; to elect officers and delegates for the coming year; and to hear and vote on this year's guidelines for expenditures and any other proposals requiring the majority approval of the membership.

A quorum of members is required to accomplish our tasks, and of course we hope you will be able to attend.

GROWING OUR MINISTRY FUND



Payroll Protection Program (PPP) Loan Forgiveness Fund— which is now called the “Growing Our Ministry Fund”

Most of you are aware that QALC was granted a PPP (loan) in May 2020 and that we obtained full use of the funds in mid-2021. Until the fall of 2021, we had not restarted worship, our nursery, or Sunday School, or many aspects of our programs. In mid-2021, then, it was hard to think about what to do

with this money— both short and long-term—as we tried to understand the “QALC Post-Covid19 New Normal.”

Now it is time to think about how to invest in ministry through the “Growing Our Ministry Fund.”

Some ideas so far:

1. Give some or all of the money back to the Federal Government, since we used it as a loan when we were unsure about our bottom-line income but did not need the loan to survive.
2. Spend part or all of the money on various internal programs:
 - a. Help subsidize the new Christian Education program—which is not yet defined. (A survey is currently out to parents of children and youth to help us shape this ministry going forward.) From 2017–2020 we relied on donations to pay Terry's salary. Our General Fund was not able to pay those expenses. Is it time to FINALLY put Christian Education for Children and Youth at the center of our plans and not as an “add on”?
 - b. Help subsidize an IT staff position, and maybe new hardware, so we can actually stream our worship live each week, as well as continue our “in-sanctuary” worship opportunities with current staffing. Although our staff very effectively cobbled together on-line worship when we did not have any physical worship in our building, they are not able to run a fully functional on-line version now without other staff, which could be full-time volunteer, or paid, or both. Many of our members still

feel more comfortable not being in a physical group. They would love being part of the worshipping community as it happens.

- c. Help subsidize a part-time volunteer coordinator—some of whose functions may overlap 2.a. & 2.b.
 - d. Help subsidize a couple of larger property projects not covered by other initiatives—refinishing pews; a new roof in some areas to prevent any more leaks; help pay for painting on the north side of the building.
3. Donate part or all to designated benevolences. Years ago, we sometimes gave year-end surplus to benevolences.
 4. Just save in a rainy-day fund that can be available for all of the above or other new ideas later approved by the Congregation and the Council.

Maybe you have not thought about possibilities; please start thinking. I hope that the Annual Meeting may have a few minutes for you to voice ideas—but *not* to propose any motions yet; *after* the Annual Meeting we would like to survey the congregation—similar to last summer's "Covid19 Reopening Survey"—and go over your all your inputs in detail. There are probably a few great ideas not listed above. We can then take the top ideas back to all of you later, hopefully for a meeting and vote, after publicizing the results.

To be fairer to all of you in such vote, there are some other spending ideas, plus maybe funding ideas, that will come up at the Annual Meeting and later. Probably you need all of those in front of you to eventually decide. But, for now, please think about your personal suggestions on how to use the \$57,000 in 2022 and beyond, assuming it is not needed to support any normal budgeted items in the 2022 Guideline for Expenditures. If you have any inputs in the next few weeks that could go into the survey, please email Rich Mathes (richmathes@icloud.com) or call me at 206-384-1183. If you want to be on the "Growing Our Ministry Fund" Survey Task Force, please let me know that as well.

Thank you.

Rich Mathes, Finance Committee chair

ENVIRONMENTAL STEWARDSHIP & FAITH

Ridwell Update:

The Christmas season means you may have even more items you'd like to keep out of the landfill—lots of packaging and plastic mailers. Boxes of foam peanuts and Styrofoam. Strands of broken Christmas lights. We can help you with that. In January we will be featuring some special one-time collections to help you with the post-Christmas piles. (The "Featured" category is a fifth, rotating category which is seasonal or made to fulfill a special request by a local non-profit. Recently they have included Union Gospel Mission, Refugee Artisan Initiative, and local artists.)

January 16 - Strands of Christmas lights - These can be working or not, colored or white, indoor or outdoor, strands and "Icicles"

We will also be doing a one-time collection of **block Styrofoam and bagged foam peanuts** so stay tuned for those details.

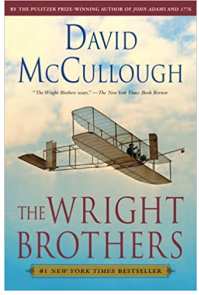
—Lisa Kjaer



** (Ridwell does take the Amazon Prime (blue and white) padded envelopes but does NOT take padded envelopes with the brown paper exterior.).*

ANNOUNCEMENTS

Queen Anne Book Group to Meet January 31



The Queen Anne Book Group will meet in the narthex on Monday, January 31 at 7 PM to discuss *The Wright Brothers* by David McCullough. Susan Evans will lead the discussion. All are welcome!

The synopsis below is from GoodReads:

“David McCullough, two-time winner of the Pulitzer Prize, tells the surprising, profoundly American story of Wilbur and Orville Wright.

Far more than a couple of unschooled Dayton bicycle mechanics who happened to hit on success, they were men of exceptional courage and determination, and of far-ranging intellectual interests and ceaseless curiosity, much of which they attributed to their upbringing. The house they lived in had no electricity or indoor plumbing, but there were books aplenty, supplied mainly by their preacher father, and they never stopped reading.

When they worked together, no problem seemed to be insurmountable. Wilbur was unquestionably a genius. Orville had such mechanical ingenuity as few had ever seen. That they had no more than a public high school education, little money and no contacts in high places, never stopped them in their mission to take to the air. Nothing did, not even the self-evident reality that every time they took off in one of their contrivances, they risked being killed.”

DECEMBER WORSHIP



In December, Christmas came, reminding us again that Christ is present always in our lives.

We give thanks for our angelic choir, for the lovely addition to our worship of Neil Hulbert on trumpet, for the gift of children singing and youth bringing us the Word, and for the familiar beauty of the poinsettias and Advent wreath!

SUNDAY, JANUARY 9

Forum at 9 AM: with Mary-Jane Rubinstein,
author of *Pantheologies: Gods, Worlds, Monsters*

SUNDAY, JANUARY 16

Forum at 9 AM: Lutheran Community Services NW Afghan Resettlement

Meet the Author:

Pantheologies: Gods, Worlds, Monsters

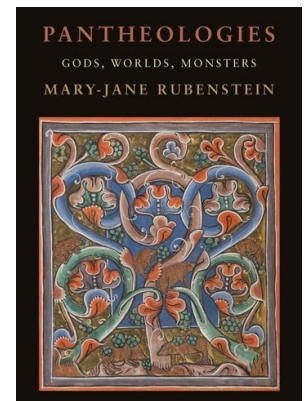
Mary-Jane Rubenstein (via Zoom)

January 9 at 9 AM; join us on Zoom or meet in-person in the Conference Room

Pantheism is the idea that God and the world are identical—that the creator, sustainer, destroyer, and transformer of all things is the universe itself. From our Western monotheistic perspective, this notion is irremediably heretical since it suggests divinity might be material, mutable, and multiple—even monstrous.

Rubenstein's book suggests that by rejecting the fundamental difference between God and world, pantheism threatens all the other oppositions that stem from it: light vs darkness, male vs female, and humans vs nature. If the panic over pantheism has to do with a fear of crossed boundaries and demolished hierarchies, then the question becomes what boundaries a present-day pantheism might disrupt and reconfigure. *Pantheologies* gives an old heresy the chance to renew our thinking.

Mary-Jane Rubenstein is professor of religion; feminist, gender, and sexuality studies; and science in society at Wesleyan University. Her books include Strange Wonder: The Closure of Metaphysics and the Opening of Awe and Worlds Without End: The Many Lives of the Multiverse



Lutheran Community Services Afghan Resettlement Program

with David Duea, Executive Director of LCSNW

January 16 at 9 AM; join us on Zoom or meet in-person in the Conference Room



David Duea, Executive Director of LCSNW will be our guest at this forum to discuss Lutheran Community Services Northwest's Afghan resettlement program and other activities in support of immigrants and refugees in our area.

First Wednesday Bible Study on Hiatus in January

Our next First Wednesdays Bible Study session will be on **Wednesday, February 2**. We will be discussing 2 Peter, which is short (just three chapters). All are welcome to this group, which meets over Zoom at noon. Check your Friday email or contact the church office for the Zoom link.



QALCW LENTEN BRUNCH

Saturday, March 5

One of the exciting things that follow Christmas and New Year's is getting to plan the Lenten Brunch! The Women's Committee is asking for help in both the planning and executing this annual event.

Our January Circles start a brand-new four-part "*Gather*" Bible study by New Testament scholar Mark Allan Powell. The series, "The Kingdom of God," will look at this widely-used biblical image and invite us into a discussion of what the reign of God means for Lutherans and other believers today.



**Intro offer for new subscribers:
One year of *Gather* for just \$9.95**

The Evening Circle and Northern Lights continue to meet. The Evening Circle meets "hybrid:" You may attend the group in-person in the Conference Room or connect with us via Zoom.

Northern Lights met for a Christmas dinner on 12/14. For 2022 we are planning on meeting the third Monday of each month from 7:00-8:30 via Zoom. We will start in January and we do plan to meet even if it is a holiday. We are now a group of seven, of which only two are QALC members—although many of us have ties to the church. We welcome anyone to join us! If you would like to attend Northern Lights, check with Dolly Smith.

From left to right: Debbie C., Deb S., Danielle H., Gretchen R., Kristi H., Jackie B., and Dolly S.



PDQ's will get back to working on quilts and kits January 10 – sometime after 5 and ending around 8 PM. Sewing and Service continues to meet on Wednesdays starting at 10 AM. Since lunch is not an option, we end by 1:00.

We want to thank everyone who contributed to the "Giving Tree" collection for Compass Housing Alliance—items were shared among many different housing groups. Pajamas were for their women's shelters, a men's group received slippers, and families received gift cards. The socks were for the Hygiene Center. We collected 152 pairs of white socks, 7 pairs of assorted socks, 8 gift cards, and 6 pairs of pajamas. Thanks for sharing with those in need.

The Women's Committee,
Candy Mathes, Barbara Bach, Pat Sobeck and Sallie Wilson

THE HOLDEN DISPATCH

In 2021 I was able to visit Holden Village twice: in late June (5 days) and early September (7 days). (The Holden archivist, Larry Howard, also visited back in May, but I had not yet received my second COVID-19 vaccine at that point, and so could not make that one.) Each time there my time was spent working in the Archives. While I took occasional short walks around the village, I did not take any extended hikes into the surrounding wilderness.



Photo courtesy of Larry Howard

Between these two visits and into the Fall season there were several threads or story lines: more seemed to happen outside the village than when I was there. One such thread had to do with a rake. This rake was made at Holden by one of the mining community families during WWII when metal was scarce. After the mine was closed the family took the rake with them and used it in yardwork chores for decades. The family now wanted to donate this rake to the Museum. In June I was not aware of any of this. So, when I met Larry Howard and Nancy (Winder) at Field's Point to catch the boat and he asked me if I had the rake, it was not a mere dumb act when I responded, "What rake?" Larry knew I had stayed overnight at the Holden Bed & Breakfast, and had thought that this rake had been delivered to Roberta – who currently runs the B&B – and that she had given it to me to take up-lake. I knew nothing of these plans and Roberta had not said anything to me nor had given me this rake. You can

imagine that the exchange between Larry and I did not go well. When I responded to Larry's frustration with, "Some people call me a rake," Nancy gave a "Go away, get out of here" gesture with her arms and the conversation was over with a laugh. Larry wanted to call Roberta but I told him she was on a morning hike to nearby Pot Peak and could not be reached. A few days later he rechecked his email correspondence with the donors and found that the rake was to be delivered in August. Oops! In September, we found the rake inside the Field's Point building with the attendant. It was a roughly constructed piece, where several metal tubes of various diameters made up the handle and the tines. It was quite bent from the decades of use, yet, as Larry said, "It weighs a ton!" He took possession of it and got it to the Archives, where it now sits with other three-dimensional artifacts.

Most of my time at Holden was spent in the Archives. Where the Archives are located within the Village Center (VC)—above the projection room or, rather, the costume shop—there is no heat control. When the village is cold and the VC is not heated to save energy, there is no means for heating a portion of the VC where Larry and I are working. An electric heater helps, yet both of us are bundled up in layers of clothes. When the village is warm to hot, the archives can get very hot. There is a door we open to allow breezes to come in ... along with unwanted insects. Larry and I put up with the lack of heat control, and the artifacts seem to survive this situation as well.



Larry Howard climbing the second flight of (not so steep) stairs to reach the work area in the archives.



The steep stairs.

During both times Larry and I were in the village working, some members of the Holden board of directors – who were also visiting the village – individually would come up the steep wooden steps to see the Archives and visit with Larry. As Larry was appointed by the Holden board to the archivist position, one of his many tasks is to periodically report to the board his activities and what has been accomplished. Larry welcomed such visits and took time to show what he verbally described in his reports. The big issue is that there has been a delay in the construction of the replacement museum: its construction should have begun in 2017. The old museum, the dream of the late Dr. Rudy Edmund (a geologist and long-time contributor to Holden), had to be removed as it was located in the middle of the area where the mill structure had been and needed to be remediated. Money for its replacement had been received. But other issues, like replacing the aging porches, took precedent. (Yes, the pandemic also contributed to the delay.) In June, I saw the replacement work on the porch of Lodge 4; in September, I saw

such work being done on the porch of Chalet 1; Larry took photos of this work. This delay has helped Larry and I to have the time to get a handle of what is stored in the Archives. While there is still work to be done, several inventory lists now cover a majority of the artifacts. But I can report that the board decided in December to commit to the construction of the new museum in the next two or three years. More money will be needed as materials and construction costs have risen during the past five years. It will be located east of the school.

After the September visit, Larry and I embarked on a quest: to understand how the responsibility for the mine cleanup and remediation ended up where it did. The information learned from this activity could be used in one of the story lines to be exhibited in the new museum. (Larry had done a similar activity previously, but not to the detail achieved to date. He often labelled this quest as “going down a rabbit hole.”) This quest was undertaken primarily on the Internet with many, many searches. When it became necessary to look up newspaper articles, the on-line ProQuest searches through the Seattle Public Libraries brought lots of assistance and information. It amazed me how much was available to be viewed, however, what was not available astonished me. Specifically, in the chain of responsible companies was a company called Alumet. It was identified in government documents but generated no press releases; it showed up in only two newspaper articles and in a patent description. Alumet and its companion company Alumet Holding are a mystery to both of us. After assembling an annotated timeline from the Holden Mine closure (1957) to the Record of Decision (2012) for the mine remediation, learning more about these two companies are the next step in this quest.

Visiting Holden in 2021 was more regulated than in previous years. Where in the past a visitor could choose which days of the week they could come to and depart from the village, groups of visitors were allowed in at the beginning of the week and leave at the end of the week. The weekends were the times when the staff could wash, clean, and get the village ready for the next set of visitors. This meant that the schedule of worship services had to be changed: the main Sunday evening eucharist service had to be moved to Friday evening, the Friday evening “Prayer Around the Cross” service was moved to Thursday evening, and so on. The Monday through Friday program remained as before. The expectation is that the same visitation schedule will be implemented in 2022. Also, negative COVID-19 tests are required 72 hours prior to scheduled arrival at Holden. Check the holdenvillage.org website for the latest information.



A deer looks for good grazing between the dining hall and Lodge 1.

—Joel Matter

Queen Anne Lutheran Office Hours

Our church office is again open four days a week, from 9 AM to 5:30 PM Tuesdays through Fridays.

During the week, please enter the building through the chapel door so you can sign our contact-tracing sheet.

Please wear a mask inside the building.

Because staffing is minimal, please call before you come by, in case we are away at lunch or on an errand.

Our Mailing Address: Queen Anne Lutheran Church, P.O. Box 17029, Seattle, WA 98127-0729

CONTACTS for QALC STAFF:

Office Phone 206/284-1960

Pastor Daniel Peterson

pastor@queenannelutheran.org

For emergency pastoral care, please text or call Pastor Dan at 253-230-9695

Cantor Kyle Haugen

cantor@queenannelutheran.org

Parish Administrator Barbara Bash

admin@queenannelutheran.org

Sexton John Bryant

sexton@queenannelutheran.org

JANUARY 2022

Sun	Mon	Tue	Wed	Thu	Fri	Sat
						1 Alanon Women (upstairs) 10:30 am Shanty Trudgers (upstairs) 7:00 pm
2 Worship (in person) 10:30 am	3	4 Executive Committee (Zoom) 6:30 pm	5 Sewing & Service (Fireside) 10:00 am AA Counterbalance (FH) 8:00 pm	6	7	8 Alanon Women (upstairs) 10:30 am Shanty Trudgers (upstairs) 7:00 pm
9 Worship (in person) 8:00 am Forum 9:00 am Worship (in person) 10:30 am	10 PDQ Quilting (Fireside) 5:30 pm	11 Church Council (Zoom) 6:30 pm	12 Sewing & Service (Fireside) 10:00 am AA Counterbalance (FH) 8:00 pm	13 Choir Rehearsal 7:00 pm	14	15 Alanon Women (upstairs) 10:30 am Shanty Trudgers (upstairs) 7:00 pm
16 Worship (in person) 8:00 am Forum 9:00 am Worship (in person) 10:30 am	17 Northern Lights Circle (Zoom) 7:00 pm	18 office closed QALCW Circle Bible Study (Conf. Rm./ Zoom) 7:00 pm	19 Sewing & Service (Fireside) 10:00 am AA Counterbalance (FH) 8:00 pm	20 Choir Rehearsal 7:00 pm	21	22 Audit Meeting 9:00 am Alanon Women (upstairs) 10:30 am Shanty Trudgers (upstairs) 7:00 pm
23 Worship (in person) 8:00 am Worship (in person) 10:30 am	24	25	26 Sewing & Service (Fireside) 10:00 am AA Counterbalance (FH) 8:00 pm	27 Choir Rehearsal 7:00 pm	28	29 Alanon Women (upstairs) 10:30 am Shanty Trudgers (upstairs) 7:00 pm
30 Worship (in person) 8:00 am Worship (in person) 10:30 am	31 Queen Anne Book Group (Narthex) 7:00 pm					