



Queen Anne

LUTHERAN CHURCH

Called to Proclaim God's Love in Christ for Every Person

2400 Eighth Avenue West
Seattle, Washington 98119

Mailing Address: P.O. Box 17029 • Seattle, WA 98127
206.284.1960 • www.queenannelutheran.org

✦ *Staff* ✦

Pastor	The Rev. Dr. Daniel Peterson
Cantor	Kyle Haugen
Parish Administrator	Barbara Bash
Sexton	John Bryant

✦ *Serving as leaders of worship today* ✦

Lector and Intercessor	Rich Mathes
------------------------	-------------

Welcome to Queen Anne Lutheran Church! We are delighted that we can share this time together. Whatever has led you here, consider yourself part of the community.

Please fill out a card from the pew rack if you are visiting us today, if you have a prayer request, if you wish to receive our newsletter, or if you wish the pastor to contact you. Simply place the card in the offering plate as you exit.

Silencing your cell phone is a good gift you can give to your fellow worshipers.

Children are always welcome in worship! Childcare is not yet available. There are "Quiet Bags" with books and soft toys, or "Doodle Bags" with paper and markers for children to use in the pews as needed. The narthex area is available for you if your child needs a break from the service. Audio from worship can be heard in the narthex.

Hearing Assisted Radio Transmitters are available. Please ask an usher for assistance.

This service is being audio-recorded, and will be posted online for those who wish to listen at home.

FIFTH SUNDAY AFTER EPIPHANY

February 6, 2022

10:30 AM



↑ = *Stand* **C**: *Congregation* **A**: *Worship Assistant* **P**: *Presiding Minister*

Hymns may be found in the red hymnals in the pews.
Large-print hymns are available in the narthex as you enter.

Quiet Bags with books and soft toys, or Doodle Bags with markers
are also available in the narthex for children.

Prelude

Piano variations on GATHER US IN
Edie Linneweber (b. 1945)

Welcome

↑ **Gathering Hymn**

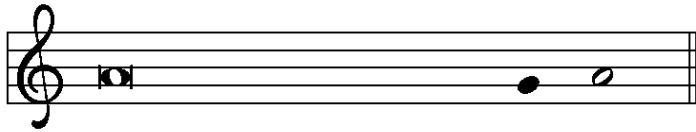
Gather Us In
ELW Hymn 532

↑ **Greeting**

P: The grace of our Lord Jesus Christ, the love of God,
and the communion of the Holy Spirit be with you all.

C: And also with you.

↑ Kyrie



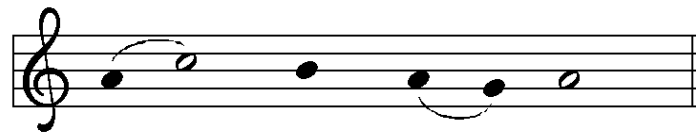
In peace, let us pray to the Lord.



Lord, have mer - cy.



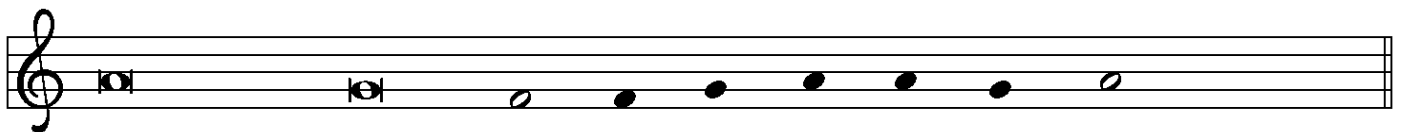
For the peace from a-bove, and for our sal - vation, let us pray to the Lord.



Lord, have mer - cy.



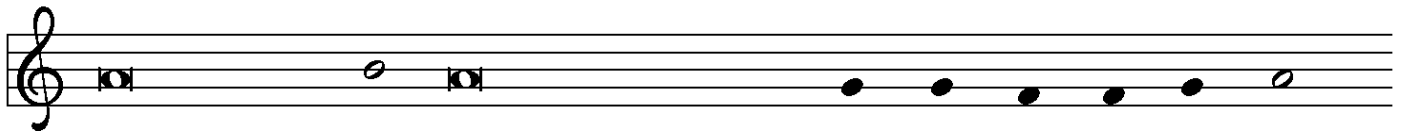
For the peace of the whole world, for the well-being of the church of God,



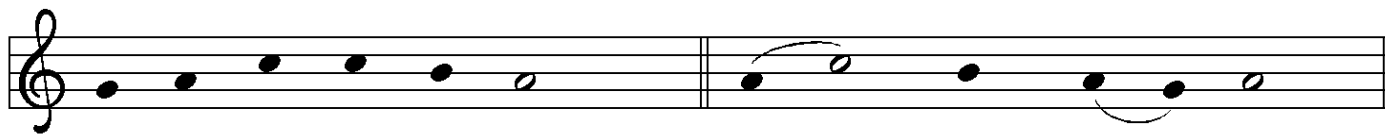
and for the unity of all, let us pray to the Lord.



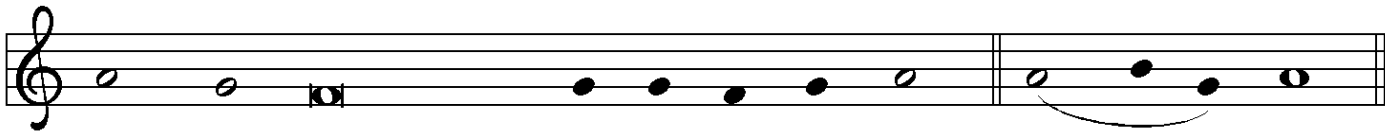
Lord, have mer - cy.



For this holy house, and for all who offer here their wor-ship and praise,

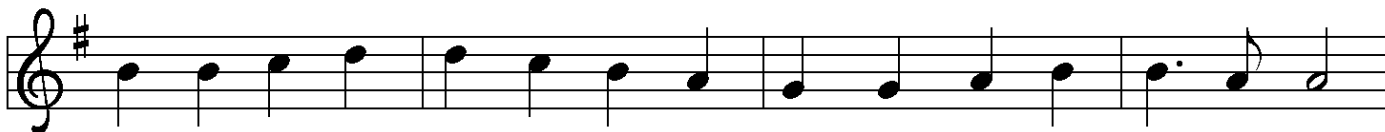


let us pray to the Lord. Lord have mer - cy.



Help, save, comfort, and de - fend us, gra-cious Lord. A - men.

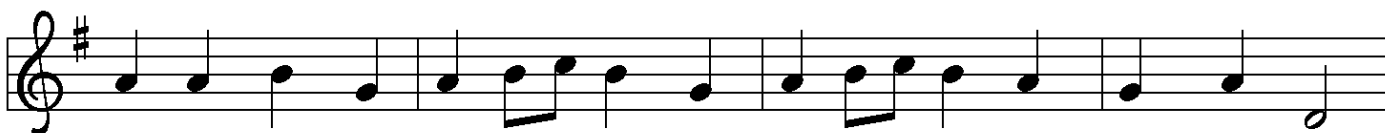
↑ Hymn of Praise



1 Glo-ry be to God in heav-en; peace, good-will to all the earth.
2 Glo-ry be to Christ for - ev - er, Lamb of God and Lord of love.
3 Ho - ly One we now ac-claim you; Lord a - lone, to you we call;



Might-y God of all cre - a - tion, Fa - ther of sur - pass - ing worth:
Son of God and gra-cious Sav - ior, you have come from heav'n a - bove;
Ho - ly One in faith we name you, God most high, yet near to all:



we ex - alt you, we a - dore you, we lift high our thanks and praise.
on the cross you died to save us; now you reign at God's right hand.
Je - sus Christ, with God the Spir - it, in the Fa - ther's splen - dor bright.



Saints and an - gels bow be - fore you; here on earth our songs we raise.
Hear our prayer; re - store, for - give us; in your prom - ise firm we stand.
For the peace that we in - her - it, glo - ry be to God on high!

↑Prayer of the Day

P: Let us pray.

Most holy God, in life as in death, we belong to you.
Enlarge our vision to see your power at work in the world,
and renew us as a foretaste of the resurrection
in the life of the world to come,
through your Son, Jesus Christ, our Savior and Lord.

C: Amen.

First Reading

Isaiah 6:1-8 [9-13]

A: Word of God, Word of life.

C: Thanks be to God.

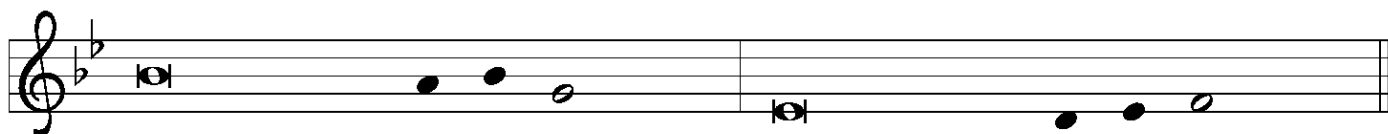
Psalm 138

Refrain: The choir introduces the refrain; all repeat. Then all repeat the refrain as indicated.



I will bow down toward your ho - ly tem - ple.

Choir: regular verses; Congregation: boldface verses.



¹I will give thanks to you, O Lord, with | my whole heart;
before the gods I will | sing your praise.

²**I will bow down toward your holy temple and praise your name,
because of your steadfast | love and faithfulness;
for you have glorified your name and your word
a- | bove all things. REFRAIN**

³When I called, you | answered me;
you increased my | strength within me.

⁴**All the rulers of the earth will praise | you, O Lord,
when they have heard the words | of your mouth.**

⁵They will sing of the ways | of the Lord,
that great is the glory | of the Lord.

⁶**The Lord is high, yet cares | for the lowly,
perceiving the haughty | from afar. REFRAIN**

⁷Though I walk in the midst of trouble, you | keep me safe;
you stretch forth your hand against the fury of my enemies;
your right | hand shall save me.

⁸**You will make good your pur- | pose for me;
O Lord, your steadfast love endures forever;
do not abandon the works | of your hands. REFRAIN**

Second Reading

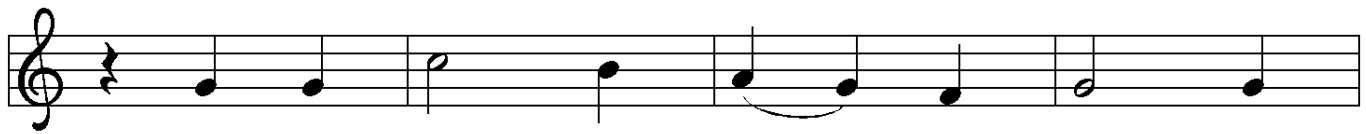
1 Corinthians 15:1-11

A: Word of God, Word of life.


G: Thanks be to God.

↑ Gospel Acclamation

Preceding and following the verse, the assembly sings the Alleluia:



G: Al - le - lu - ia, al - le - lu - ia.



Al - le - lu - ia, al - le - lu - ia.

↑ **The Holy Gospel**

Luke 5:1-11

P: The Gospel according to St. Luke, the fifth chapter.

G: **Glory to you, O Lord.**

Following the reading

P: The Gospel of the Lord.

G: **Praise to you, O Christ.**

Sermon

Martin, It's Time to Get Up
Pastor Dan

↑ **Hymn of the Day**

Lead Me, Guide Me
ELW Hymn 768

Please remain seated as the choir introduces the hymn with the refrain and stanza 1.

At the conclusion of stanza 1, please stand as you are able to sing the refrain, stanzas 2 and 3, and then repeat stanza 1.

↑ Apostles' Creed

☩: I believe in God, the Father almighty,
creator of heaven and earth.

I believe in Jesus Christ, God's only Son, our Lord,
who was conceived by the Holy Spirit,
born of the virgin Mary,
suffered under Pontius Pilate,
was crucified, died, and was buried;
he descended to the dead.

On the third day he rose again; he ascended into heaven,
he is seated at the right hand of the Father,
and he will come again to judge
the living and the dead.

I believe in the Holy Spirit,
the holy catholic church,
the communion of saints,
the forgiveness of sins,
the resurrection of the body,
and the life everlasting. Amen.

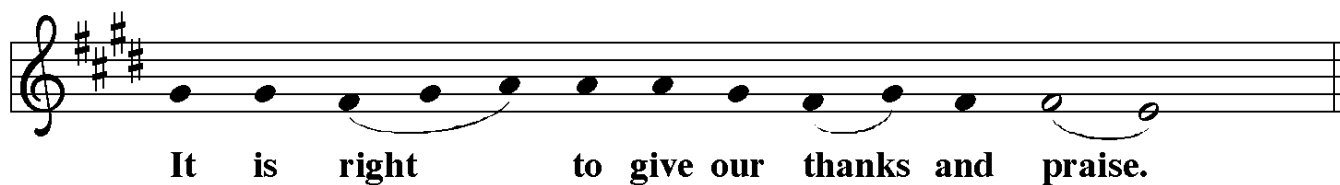
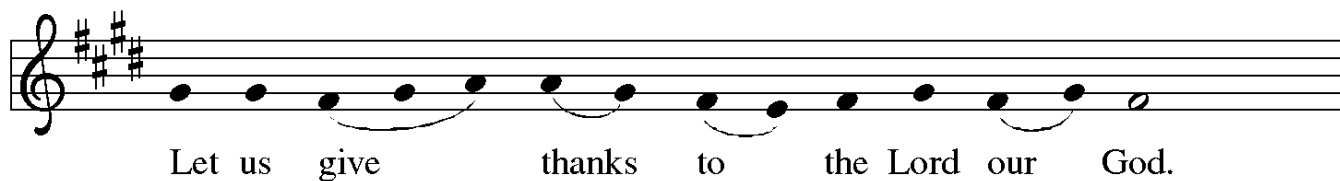
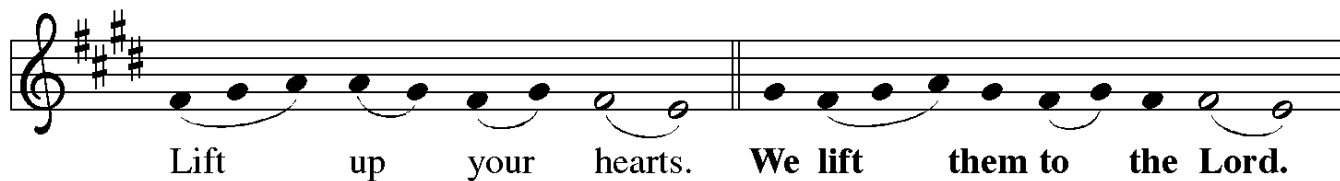
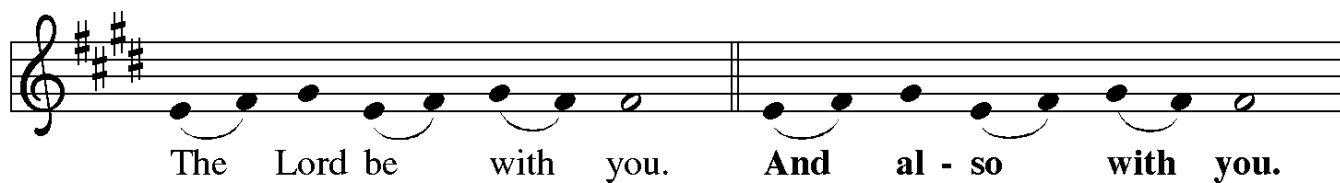


↑ Prayers of the Church

A: . . . Lord, in your mercy,

☩: hear our prayer.

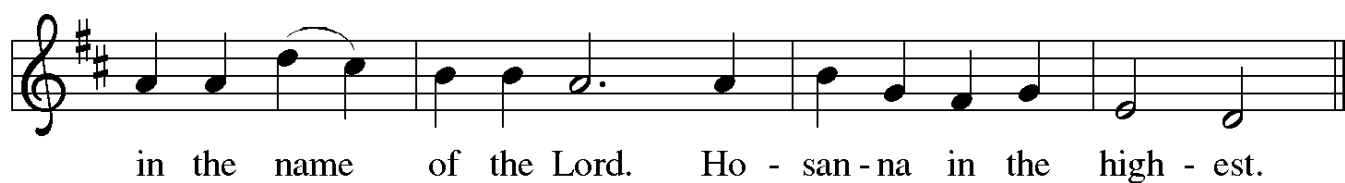
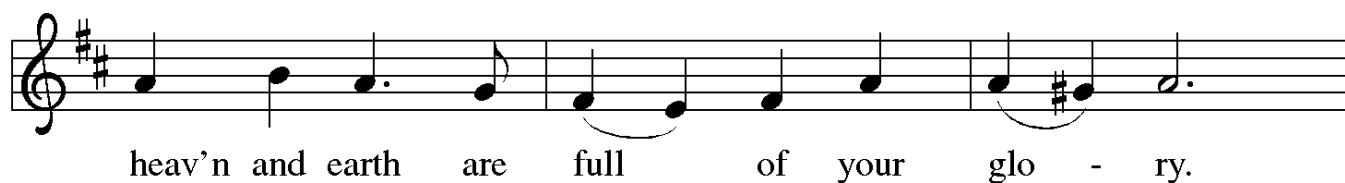
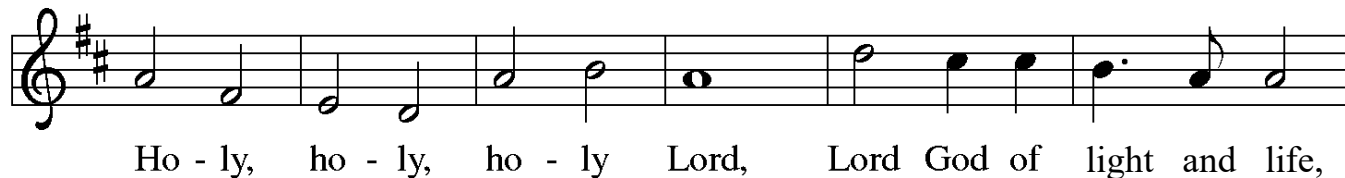
↑ The Great Thanksgiving



Ⓟ: It is indeed right, our duty and our joy . . .

. . . praise your name and join their unending hymn:

↑ Sanctus



↑ **Words of Institution**

↑ **Lord's Prayer**

P: Lord, inspire us to work toward your kingdom and teach us to pray:

C: **Our Father in heaven,
hallowed be your name,
your kingdom come,
your will be done,
on earth as in heaven.
Give us today our daily bread
and forgive us our sins
as we ourselves forgive everyone indebted to us.
Save us from the time of trial and deliver us from evil.
For the kingdom, the power, and the glory are yours,
now and forever.
Amen.**

Holy Communion – All baptized Christians who seek a taste of the new and forgiven life in Jesus Christ are welcome to receive the sacraments.

We confess and believe that Christ in his risen form is truly present in the Sacrament of bread and wine and that by sharing in this meal, we share in Christ's resurrection.

The ministration of the Sacrament will take place in the pews with individual elements. These are available as you enter; if you missed picking one up and need one, please signal an usher now with a raised hand.

When invited to commune, peel off the bottom tab to eat the bread; peel off the top tab to drink the wine. The waste can go in the paper bag found in each pew.

↑ **Invitation to the Table**

P: Receive the bread of life.
Christ is among us.

Agnus Dei



Lamb of God, you take a-way the sin of the world; have mer-cy on



us. Lamb of God, you take a-way the sin of the world; have



mer-cy on us. Lamb of God, you take a-way the



sin of the world; grant us peace, grant us peace.

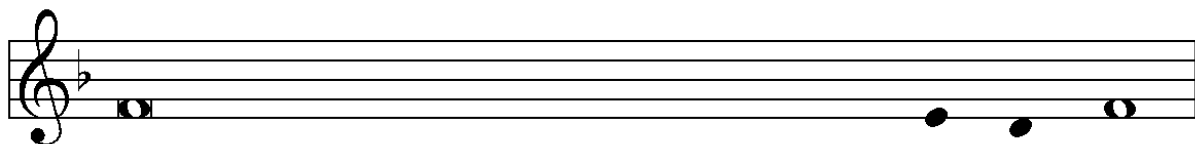
Post Communion Prayer

P: We give you thanks, gracious God,
for the love you show us in this meal.
Send us to bring good news to a hurting world,
and to proclaim your favor to all,
strengthened with the richness of your grace
in your Son, Jesus Christ.

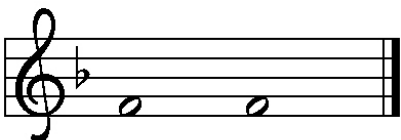
C: Amen.

Announcements

↑ Benediction



P: The Lord bless you and keep you.
The Lord make his face to shine on you
and be gracious to you.
The Lord look upon you with favor and † give you peace.



C: A - men.

↑ Sending Hymn (see next page)

Go to the World
ACS 991

↑ Dismissal

A: Go in peace. Serve the Lord.
C: Thanks be to God.

Please remain seated until the ushers dismiss you from your pew, and maintain social distancing as we exit. On your way out, put your bulletin back in the baskets on the table if you do not want to take it with you. Offerings may be put in the offering plate as you exit. If you wish to greet Pastor Dan following the service, he will be standing outside in the breezeway to allow greater space for those who need to leave after the service. You may remain in fellowship with one another as long as you like; please respect others' need for social distancing.

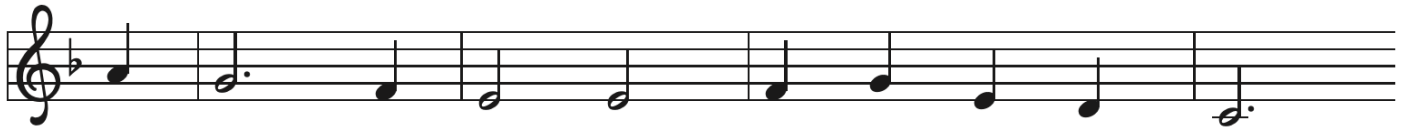
Postlude

March
Flor Peeters (1903–1986)

Go to the World!



1 Go to the world! Go in - to all the earth.
2 Go to the world! Go in - to ev - 'ry place.
3 Go to the world! Go strug - gle, bless, and pray;
4 "Go to the world! Go as the ones I send,



Go preach the cross where Christ re - news life's worth,
Go live the word of God's re - deem - ing grace.
the nights of tears give way to joy - ous day.
for I am with you till the age shall end,



bap - tiz - ing as the sign of our re - birth.
Go seek God's pres - ence in each time and space.
As ser - vant church, you fol - low Christ's own way.
when all the hosts of glo - ry cry, A - men!"



Al - le - lu - ia. Al - le - lu - ia.

Text: Sylvia G. Dunstan, 1955–1993

Music: SINE NOMINE, Ralph Vaughan Williams, 1872–1958

About today's music

In honor of Black History Month, the text and melody of today's Hymn of The Day, "Lead Me, Guide Me" (ELW 768) is by African American singer, pianist, and composer Doris Akers (1922-1995). In the context of today's readings, we might think of this hymn as a plea for God's daily guidance as each of us – not so unlike the disciples at the lakeshore – live out our shared calling as ambassadors of the Good News amid the challenges of a broken world. In a broader context, hymnologist Paul Westermeyer suggests that this hymn is "an African American gospel counterpart of the [Lutheran] chorale tradition's 'If you but trust in God to guide you,' (#769)."

Westermeyer notes that "the first person singular of the African American tradition is profoundly communal." This is an important concept when juxtaposing this genre with the chorale tradition, which tends to avoid the first person singular. When singing words such as, "I am weak and I need thy strength," one voice is joining many in making a shared statement with universal application; the individual's expression comes from within a community of shared experience. Perhaps consider reflecting on the texts of both ELW 768 and ELW 769 as a personal devotion. – Cantor Kyle

Evangelical Lutheran Worship, Settings Four and Ten © 2006 Augsburg Fortress. Reprinted with permission under License 26521. Liturgy from *Evangelical Lutheran Worship*, Metrical Sanctus text by Martin Seltz © 1998 Augsburg Fortress. Reprinted with permission under OneLicense A-706855. All rights reserved. Reproduced by permission for local use only.

ANNOUNCEMENTS — FEBRUARY 6

WELCOME! Please fill out a CONNECT card found in the pew rack if you are visiting us today, if you wish to receive our emails or newsletter, or if you wish the pastor to contact you. PRAY cards may be used for prayer requests. Place cards in the offering plate as you leave.

FLOWERS FOR THE ALTAR today are given by Liz Major to the glory of God and in loving memory of her mom, Mary.

A NOTE FOR VISITORS: Please make sure you have left us a contact phone number or email when you enter and sign in. This is simply to ensure we can reach you if needed for contact tracing.

2022 OFFERING ENVELOPES Please find your household's offering envelopes on the narthex table and take them home with you!