

THIRD SUNDAY IN LENT

March 20, 2022

10:30 AM



↑ = *Stand* **C**: *Congregation* **A**: *Worship Assistant* **P**: *Presiding Minister*

Hymns may be found in the red hymnals in the pews.
Large-print hymns are available in the narthex as you enter.

Quiet Bags with books and soft toys, or Doodle Bags with markers
are also available in the narthex for children.

Prelude

Chorale prelude on O MENSCH, BEWEIN DEIN' SÜNDE GROSS
J.S. Bach (1685–1750)

Introit

Psalm 25:15, 16, 1–2

My eyes are ever looking unto you, O LORD, for you will pluck my feet out of the net. Look now upon me, and have mercy upon me, for I am alone and in misery. Unto you, O LORD, do I lift up my soul. My God, in you have I trusted, let me not be confounded.

Welcome

↑ Gathering Hymn

Awake, O Sleeper, Rise from Death
ELW 452

↑ Greeting

P: The grace of our Lord Jesus Christ, the love of God,
and the communion of the Holy Spirit be with you all.

C: And also with you.

↑ Kyrie



In peace, let us pray to the Lord.



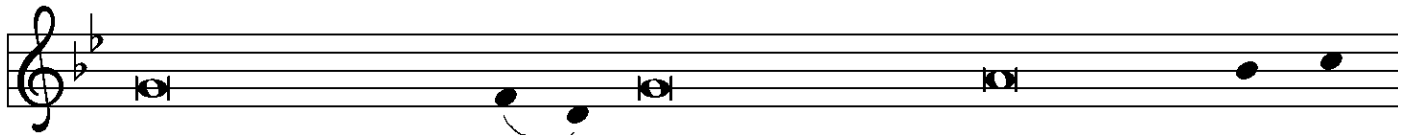
Lord, have mer - cy.



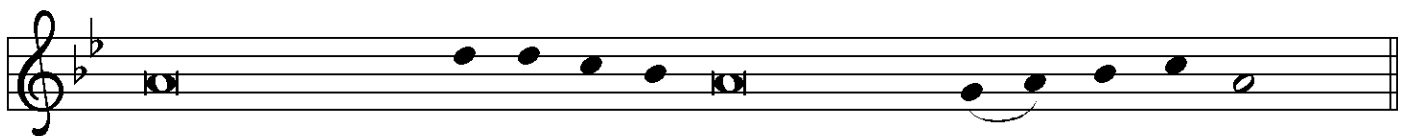
For the peace from a - bove, and for our sal - vation, let us pray to the Lord.



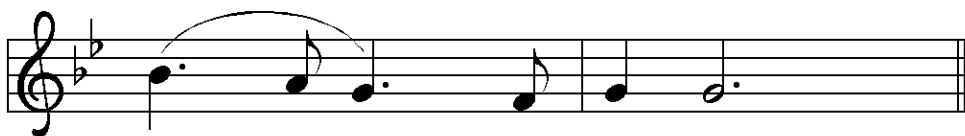
Lord, have mer - cy.



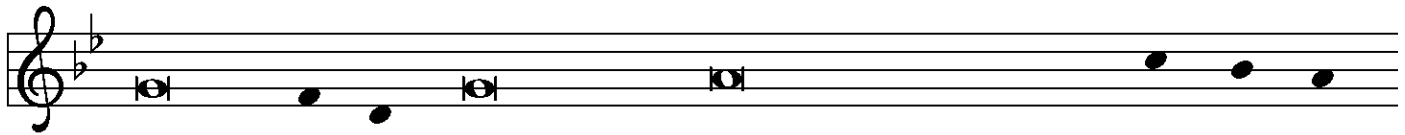
For the peace of the whole world, for the well - being of the church of



God, and for the u - ni - ty of all, let us pray to the Lord.



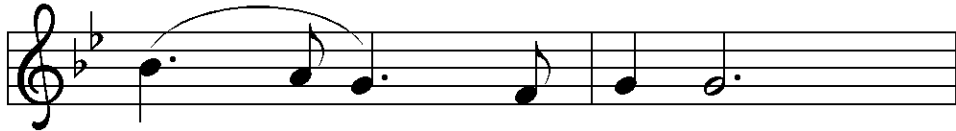
Lord, have mer - cy.



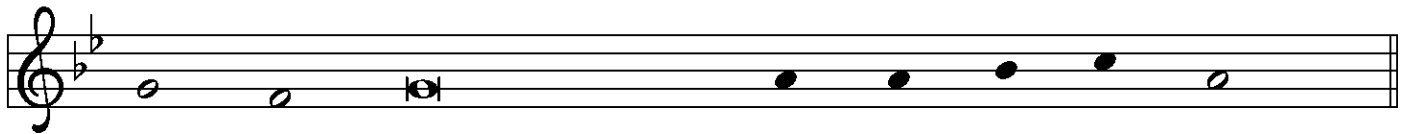
For this ho - ly house, and for all who offer here their wor - ship and



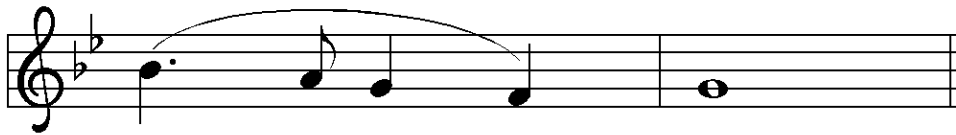
praise, let us pray to the Lord.



Lord, have mer - cy.



Help, save, comfort, and de - fend us, gra - cious Lord.



A - men.

↑Prayer of the Day

P: The Lord be with you.

C: **And also with you.**

P: Let us pray.

Eternal God, your kingdom has broken into our troubled world through the life, death, and resurrection of your Son.

Help conform us to his image,

that we may live for others as he did,

in his name, your Son, Jesus Christ, our Lord,

who lives and reigns with you and the Holy Spirit,

one God, now and forever.

C: **Amen.**

First Reading

Isaiah 55:1-9

A: Word of God, Word of life.

G: Thanks be to God.

Psalmody

Psalm 63:1-8

To begin the psalm, the Choir sings the Refrain and all repeat. Thereafter, the Choir sings the psalm and the Congregation sings the Refrain as indicated.

REFRAIN

Organ: *Everyone:*

O God, you are my God; eag-er-ly I seek you.

- ¹O God, you are my God; eager- | ly I seek you;
my soul thirsts for you, my flesh faints for you,
as in a dry and weary land where there | is no water.
- ²Therefore I have gazed upon you in your | holy place,
that I might behold your power | and your glory.

REFRAIN

- ³For your steadfast love is better than | life itself;
my lips shall | give you praise.
- ⁴So will I bless you as long | as I live
and lift up my hands | in your name.

REFRAIN

- ⁵My spirit is content, as with the rich- | est of foods,
and my mouth praises you with | joyful lips,
- ⁶when I remember you up- | on my bed,
and meditate on you in | the night watches.

REFRAIN

⁷For you have | been my helper,
and under the shadow of your wings I | will rejoice.

⁸My whole being | clings to you;

REFRAIN

Second Reading

1 Corinthians 10:1-13

A: Word of God, Word of life.

G: Thanks be to God.

↑ Lenten Verse

ELW, page 151



Re - turn to the Lord, your God, for he is gra - cious and mer - ci - ful,



slow to an - ger, and a - bound - ing in stead - fast love.

↑ The Holy Gospel

Luke 13:1-9

P: The Gospel according to St. Luke, the thirteenth chapter.

G: Glory to you, O Lord.

Following the reading

P: The Gospel of the Lord.

G: Praise to you, O Christ.

Sermon

Pastor Mel Jacob

↑ Hymn of the Day

Tree of Life and Awesome Mystery

stanzas 1-3, then concluding with "Lent 3"

ELW, Hymn 334

↑ Apostles' Creed

☩: I believe in God, the Father almighty,
creator of heaven and earth.

I believe in Jesus Christ, God's only Son, our Lord,
who was conceived by the Holy Spirit,
born of the virgin Mary,
suffered under Pontius Pilate,
was crucified, died, and was buried;
he descended to the dead.

On the third day he rose again; he ascended into heaven,
he is seated at the right hand of the Father,
and he will come again to judge
the living and the dead.

I believe in the Holy Spirit,
the holy catholic church,
the communion of saints,
the forgiveness of sins,
the resurrection of the body,
and the life everlasting. Amen.



Prayers of the Church

A: . . . Lord, in your mercy,

☩: hear our prayer.

↑ The Great Thanksgiving

P: The Lord be with you.

C: And also with you.

P: Lift up your hearts.

C: We lift them to the Lord.

P: Let us give thanks to the Lord our God.

C: It is right to give our thanks and praise.

P: It is indeed right, our duty and our joy . . .

. . . praise your name and join their unending hymn:

↑ Sanctus



↑ Words of Institution

↑ Lord's Prayer

P: Lord, inspire us to work toward your kingdom and teach us to pray:

C: **Our Father in heaven,
hallowed be your name,
your kingdom come,
your will be done,
on earth as in heaven.**

**Give us today our daily bread
and forgive us our sins**

as we forgive those who sin against us.

Save us from the time of trial and deliver us from evil.

**For the kingdom, the power, and the glory are yours,
now and forever.**

Amen.

Holy Communion – All baptized Christians who seek a taste of the new and forgiven life in Jesus Christ are welcome to receive the sacraments.

We confess and believe that Christ in his risen form is truly present in the Sacrament of bread and wine and that by sharing in this meal, we share in Christ's resurrection.

The ministrations of the Sacrament will take place in the pews with individual elements. These are available as you enter; if you missed picking one up and need one, please signal an usher now with a raised hand.

When invited to commune, peel off the bottom tab to eat the bread; peel off the top tab to drink the wine. The waste can go in the paper bag found in each pew.

↑ Invitation to the Table

P: Christ is among us.
Receive the bread of life.

Agnus Dei



Lamb of God, you take a-way the sin of the world; have mer-cy on us.



Lamb of God, you take a-way the sin of the world; have mer-cy on us.



Lamb of God, you take a-way the sin of the world; grant us



peace, grant us peace.

Post Communion Prayer

☞: We give you thanks, gracious God,
for the love you show us in this meal.
Send us to bring good news to a hurting world,
and to proclaim your favor to all,
strengthened with the richness of your grace
in your Son, Jesus Christ.

☞: Amen.

Announcements

↑ Benediction

☞: The Lord bless you and keep you.
The Lord make his face to shine on you
and be gracious to you.
The Lord look upon you with favor and ✠ grant you peace.

☞: Amen.

↑ Dismissal

A: Go in peace. Serve the Lord.

G: Thanks be to God.

Please remain seated until the ushers dismiss you from your pew, and maintain social distancing as we exit. On your way out, put your bulletin back in the baskets on the table if you do not want to take it with you. Offerings may be put in the offering plate as you exit. If you wish to greet Pastor Dan following the service, he will be standing outside in the breezeway to allow greater space for those who need to leave after the service. You may remain in fellowship with one another as long as you like; please respect others' need for social distancing.

Postlude

Chorale prelude on SEELENBRÄUTIGAM (ELW 624)
Georg Andreas Sorge (1703–1778)
concluding with an organ stanza by Benjamin Culli (b. 1975)

About today's music

The famous organ prelude by J.S. Bach heard today is based upon the Passiontide hymn, *O Mensch, beweine dein' Sünde groß* ("O mortal, weep for your great sins") by German musicologist, church musician, poet, and theologian Sebald Heyden (1499–1561), written in 1530. The melody by German cantor, composer, and priest Mathias Greiter (c. 1495–1550) dates to around 1524. The text contemplates the Christ's salvific mission, drawing in part from the suffering Servant of Isaiah 53 who "was wounded for our transgressions" (v. 5). The hymn's first stanzas frame the humanity and divinity of Jesus, who left "the Father's throne" to become incarnate, born of Mary. The second half of the first stanza is translated by Catherine Winkworth (1827–1878) as "The dead He raised to life again. / The sick He freed from grief and pain. Until the time appointed / That He for us should give His Blood; Should bear our sins' o'erwhelming load, / The shameful Cross enduring." In the original German, "The shameful Cross enduring" is more literally rendered as, "For a long time on the cross." It is at this corresponding moment in the melody that Bach slows the piece and introduces harmonies foreign to the piece's tonality – as if to take a "long time" to underscore the significance of the cross.

– Cantor Kyle Haugen

ANNOUNCEMENTS — MARCH 20

WELCOME! Please fill out a CONNECT card found in the pew rack if you are visiting us today, if you wish to receive our emails or newsletter, or if you wish the pastor to contact you. PRAY cards may be used for prayer requests. Place cards in the offering plate as you leave.

A NOTE FOR VISITORS: Please make sure you have left us a contact phone number or email when you enter. This ensures we can reach you if needed for contact tracing.

WE WELCOME REV. MEL JACOB in worship today as our guest pastor. Ordained for 47 years, Pastor Mel Jacob was a parish pastor, a Chaplain (COL-Ret) in the US Army Reserves and a V.A. Chaplain. He was Founder/Developer/ Executive Director of Lutheran Counseling Services in Orlando, Florida and has worked extensively with eight denominations in areas of consultation, candidacy, conflict resolution, and counseling for workers and families. Since 2016 he has contributed to the interdenominational endeavors of Food for the Poor. In 2016 he received the “*Christus in Mundo Award*” from Domestic Missions of the ELCA.

STAFF VACATIONS THIS WEEK

Pastor Dan will be away through Wed., March 23. He will be in the church office Thursday 11-4, and at his office hours on Saturday from 1-4.

Barbara Bash will be away this Thursday, March 24 through Tuesday, March 29. The office will be closed on Friday, March 25, but open 9-5:30 on Tuesday, March 29.

QA BOOK GROUP MEETS Monday, March 28 at 7 PM in the narthex to discuss *Crying in H Mart* by Michelle Zauner. Sallie Wilson will lead the discussion. All are welcome.

THIS WEEK'S CALENDAR

Sunday, March 20

Mel Jacob, Guest Pastor

Worship	8:00 AM
Forum (Conf. Rm.)	9:00 AM
Worship	10:30 AM

Monday

Northern Lights (Zoom)	7:00 PM
------------------------	---------

Wednesday

AARP Tax Aides (Conf. Rm.)	9:30 AM
Sewing and Service (Fireside)	10:00 AM
Staff Meeting (Conf. Rm)	3:30 PM
Mid-Week Worship (Zoom)	7:30 PM
AA Counterbalance (FH)	8:00 PM

Thursday (office open 11-4)

Choir Practice (nave)	7:00 PM
-----------------------	---------

Friday (office closed)

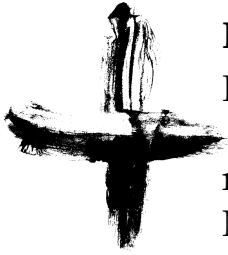
Saturday

Alanon Women (upstairs)	10:30 AM
AA Shanty Trudgers (upstairs)	7:00 PM

Sunday, March 27

Worship	8:00 AM
Forum (Conf. Rm.)	9:00 AM
Worship	10:30 AM

FORUMS IN LENT: Crucifixion, Theater of the Absurd



March Sundays with Dr. Matthew Whitlock, Seattle University

Resurrection is easy, but the cross is scandalous and foolish to the world, as Paul writes. This Lent, Professor Matt Whitlock of Seattle University returns to examine the cross as an absurdity with which the authors of the New Testament struggle to make sense out of Jesus' suffering. How can we learn from their struggle as we face the senselessness of suffering in our own lives?

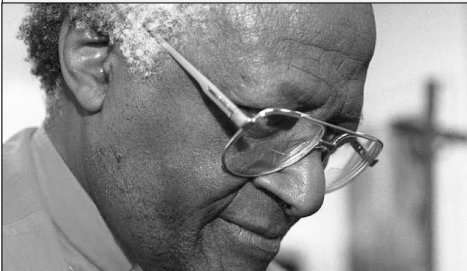
All are welcome at 9 AM Sundays in the Conference Room, or to attend on Zoom.

WEDNESDAYS IN LENT: Evening Worship on Zoom—

Every Wednesday during Lent (March 9 through April 6), we will have a worship service at 7:30 PM via Zoom. Each service will include a reading, reflection and hymn based on the following theme:

Stillness, Silence, and Song:

Archbishop Desmond Tutu on Living a Spiritual Life



On December 26, 2021, the world lost a famous advocate for justice, the Archbishop Desmond Tutu. Most of us associate his life with the struggle against apartheid in South Africa. What we may not

know is the spirituality that informed it. This Lent, in keeping with the theme of reflection and as a way of commemorating his, we will explore a spirituality that helped change a big corner of the world – a spirituality that can change each of us too.

LENTEN OFFERINGS—

A special offering will be collected during Lent for Lutheran Community Services NW— Afghan Refugee Resettlement Program. Please mail us your offerings designated “**LCSNW— Afghan Refugees,**” or leave them after any Sunday worship during Lent.

LET'S FIGURE OUT LIVESTREAMING! Several people have expressed the wish that our Sunday worship could be live streamed for viewing online “as it happens.” If you are interested in pursuing that idea (researching the equipment we already have in place, determining further steps that would be needed, and then implementing the streaming process through hiring or with volunteers), please let Pastor Dan or a Church Council member know of your interest.

LET'S GET CHILDCARE GOING! We are trying to organize childcare coverage during worship. Temporarily, we will need to rely on volunteers. (We are exploring nanny services, but many of these businesses are currently understaffed.) If you could help during even one worship service, email the office or sign up in the narthex. Email the church office if you would like to help find childcare solutions.

Easter Lilies

for one another

This year, your donated lilies may be given as gifts to 20 isolated members of our congregation. Extra lilies will be used to decorate the altar and narthex for Easter, and donors who like may take one home after worship that Sunday, first come, first served.

Please fill out the form below and place it in the offering plate, or email the info to the church office before Wednesday, April 13.

Cost per plant is \$12.00. Checks should be made out to QALC and marked "Easter Lily."

If you are giving the lily in honor or memory of someone, please print that name below. The person you choose to commemorate with your gift will be noted in the church bulletin for our Easter service.



My name _____

Total number of plants donated _____

"In memory of:" OR "In honor of:"

My check is enclosed or attached for \$ _____

I can help deliver lilies during Holy Week, April 10-16 – loop me in, please!