



Queen Anne

LUTHERAN CHURCH

Called to Proclaim God's Love in Christ for Every Person

2400 Eighth Avenue West

Seattle, Washington 98119

Mailing Address: P.O. Box 17029 • Seattle, WA 98127

206.284.1960 • www.queenannelutheran.org

✧ *Staff* ✧

Pastor	Rev. Dr. Daniel Peterson
Cantor	Kyle Haugen
Parish Administrator	Barbara Bash
Sexton	John Bryant

✧ *Serving as leaders of worship today* ✧

Lector and Intercessor	Rich Mathes
Acolyte	Christian Louie

Welcome to Queen Anne Lutheran Church! We are delighted that we can share this time together. Whatever has led you here, consider yourself part of the community.

Please fill out a card from the pew rack if you are visiting us today, if you have a prayer request, if you wish to receive our newsletter, or if you wish the pastor to contact you. Simply place the card in the offering plate as you exit.

Silencing your cell phone is a good gift you can give to your fellow worshipers.

Children are always welcome in worship! There are "Quiet Bags" with books and soft toys, or "Doodle Bags" with paper and markers for children to use in the pews as needed. **Child Care is available** on the second floor, which can be accessed by the elevator or the two stairways. An usher can assist you. The narthex area is also available for you if your child needs a break from the service. Audio from worship can be heard in the narthex.

Hearing Assisted Radio Transmitters are available. Please ask an usher for assistance.

This service is being audio-recorded, and will be posted online for those who wish to listen at home.

SECOND SUNDAY OF EASTER

April 24, 2022

10:30 AM



↑ = *Stand* **C**: *Congregation* **A**: *Worship Assistant* **P**: *Presiding Minister*

Hymns may be found in the red hymnals in the pews.

Large-print hymns are available in the narthex as you enter.

Quiet Bags with books and soft toys, or Doodle Bags with markers
are also available in the narthex for children.

Prelude

Welcome

↑ **Gathering Hymn**

Good Christian Friends, Rejoice and Sing!

ELW 385

↑ **Greeting**

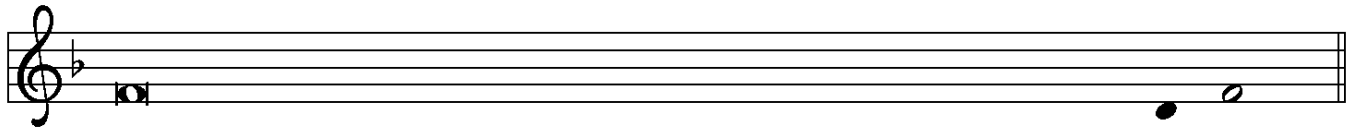
P: The grace of our Lord Jesus Christ, the love of God,
and the communion of the Holy Spirit be with you all.

C: **And also with you.**

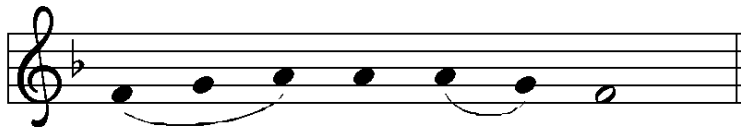
↑ Kyrie



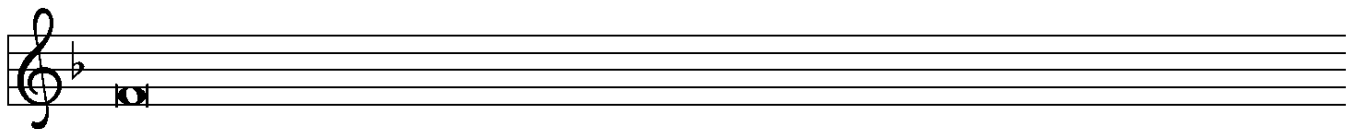
In peace, let us pray to the Lord. Lord, have mer - cy.



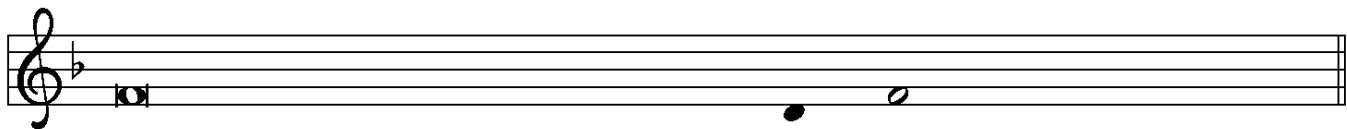
For the peace from above, and for our salvation, let us pray to the Lord.



Lord, have mer - cy.



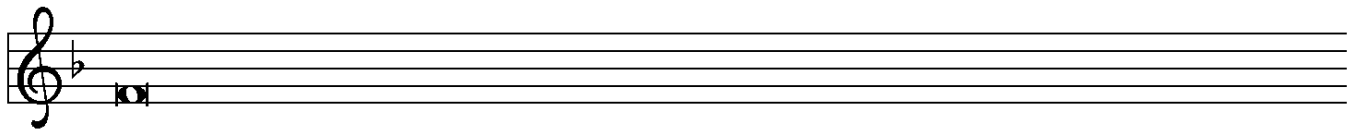
For the peace of the whole world, for the well-being of the church of God,



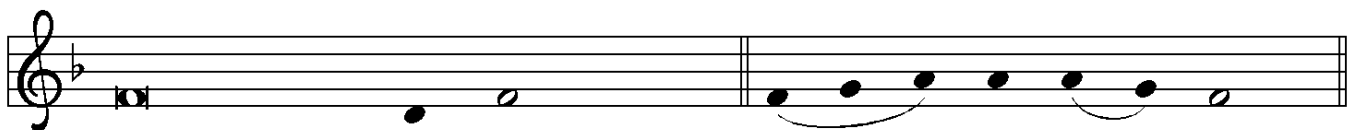
and for the unity of all, let us pray to the Lord.



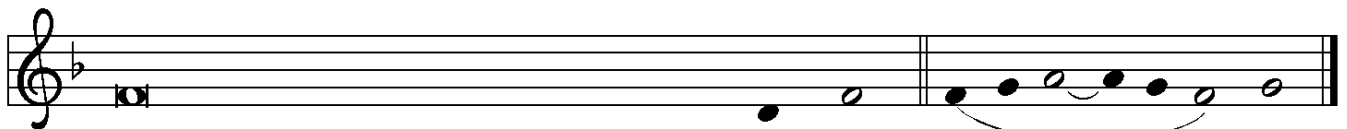
Lord, have mer - cy.



For this holy house, and for all who offer here their worship and praise,



let us pray to the Lord. Lord, have mer - cy.



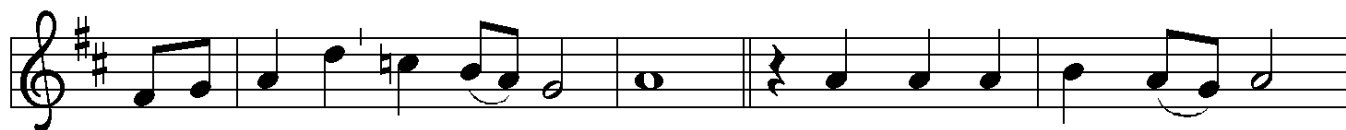
Help, save, comfort, and defend us, gra - cious Lord. A - men.

↑ Hymn Of Praise

Refrain



This is the feast of vic-to-ry for our God. Al-le - lu - ia,



al - le - lu - ia, al - le - lu - ia. 1 Wor - thy is Christ, the Lamb

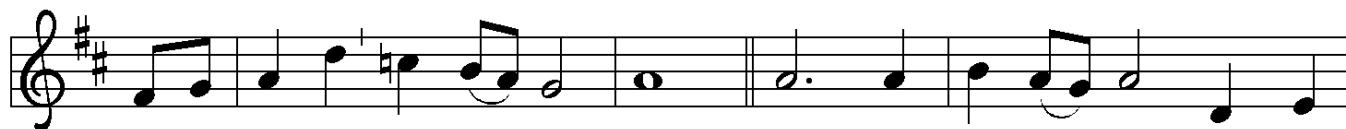


who was slain, whose blood set us free to be peo - ple of God.

Refrain



This is the feast of vic-to-ry for our God. Al-le - lu - ia,



al - le - lu - ia, al - le - lu - ia. 2 Pow - er, rich - es, wis - dom, and

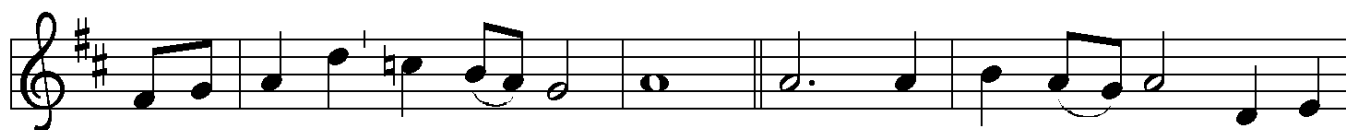


strength, and hon - or, bless - ing, and glo - ry are his.

Refrain



This is the feast of vic-to-ry for our God. Al-le - lu - ia,



al - le - lu - ia, al - le - lu - ia. 3 Sing with all the peo - ple of



God, and join in the hymn of all cre - a - tion: Bless - ing, hon - or,

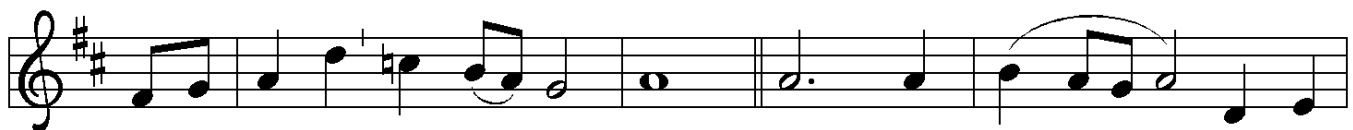


glo - ry, and might be to God and the Lamb for - ev - er. A - men.

Refrain



This is the feast of vic - to - ry for our God. Al - le - lu - ia,



al - le - lu - ia, al - le - lu - ia. 4 For the Lamb who was



slain has be - gun his reign. Al - le - lu - ia.

Final refrain



This is the feast of vic - to - ry for our God.



Al - le - lu - ia, al - le - lu - ia, al - le - lu - ia.

↑Prayer of the Day

☐: The Lord be with you.

☑: And also with you.

P: Let us pray.

O God of life, you reach out to us amid our fears
with the wounded hands of your risen Son.

By your Spirit's breath revive our faith,
and strengthen us to be the body of your Son,
Jesus Christ, our Savior and Lord,
who lives and reigns with you and the Holy Spirit,
one God, now and forever.

G: Amen.

First Reading

Acts 5:27-32

A: Word of God, Word of life.

G: Thanks be to God.

Psalmody

Psalm 150

*The psalm is read responsively. Pastor Dan reads the regular-font verses;
the Congregation reads the boldface verses.*

¹Hallelujah! Praise God in the holy temple;
praise God in the mighty firmament.

²**Praise God for mighty acts;
praise God for exceeding greatness.**

³Praise God with trumpet sound;
praise God with lyre and harp.

⁴**Praise God with tambourine and dance;
praise God with strings and pipe.**

⁵Praise God with resounding cymbals;
praise God with loud clanging cymbals.

⁶**Let everything that has breath
praise the Lord. Hallelujah!**

Second Reading

Revelation 1:4-8

A: Word of God, Word of life.

G: Thanks be to God.

↑ Gospel Acclamation

ELW, page 151



Al - le - lu - ia. Lord, to whom shall we go? You have the
words of e - ter - nal life. Al - le - lu - ia. Al - le - lu - ia.

↑ The Holy Gospel

John 20:19-31

P: The Gospel according to St. John, the twentieth chapter.

G: **Glory to you, O Lord.**

Following the reading

P: The Gospel of the Lord.

G: **Praise to you, O Christ.**

Sermon

Is Heaven for Real? A Case Beyond the Ages
Pastor Dan

↑ Hymn of the Day

Christ the Lord Is Risen Today
ELW, Hymn 373

↑ Apostles' Creed

G: **I believe in God, the Father almighty,
creator of heaven and earth.**

**I believe in Jesus Christ, God's only Son, our Lord,
who was conceived by the Holy Spirit,
born of the virgin Mary,
suffered under Pontius Pilate,
was crucified, died, and was buried;
he descended to the dead.**

On the third day he rose again; he ascended into heaven,
he is seated at the right hand of the Father,
and he will come again to judge
the living and the dead.

I believe in the Holy Spirit,
the holy catholic church,
the communion of saints,
the forgiveness of sins,
the resurrection of the body,
and the life everlasting. Amen.



Prayers of the Church

A: ... Lord, in your mercy,

G: hear our prayer.

↑ The Great Thanksgiving

The Lord be with you. And al - so with you.

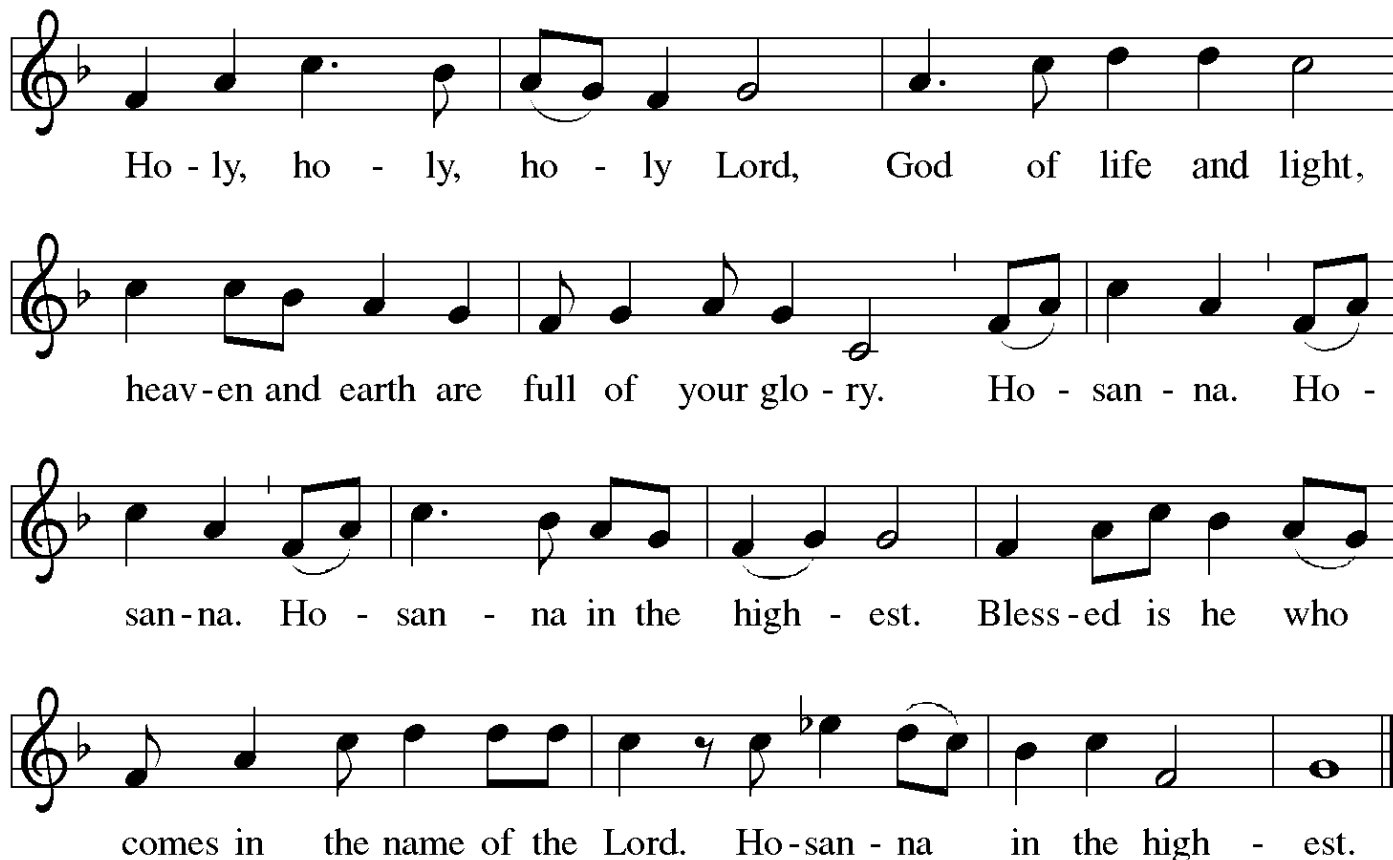
Lift up your hearts. We lift them to the Lord.

Let us give thanks to the Lord our God.

It is right to give our thanks and praise.

P: It is indeed right, our duty and our joy ...
... praise your name and join their unending hymn:

↑ Sanctus



Ho - ly, ho - ly, ho - ly Lord, God of life and light,
heav-en and earth are full of your glo - ry. Ho - san - na. Ho -
san-na. Ho - san - na in the high - est. Bless-ed is he who
comes in the name of the Lord. Ho-san - na in the high - est.

↑ Words of Institution

↑ Lord's Prayer

P: Lord, inspire us to work toward your kingdom and teach us to pray:

G: **Our Father in heaven,**

hallowed be your name,

your kingdom come, your will be done,

on earth as in heaven.

Give us today our daily bread

and forgive us our sins as we forgive those who sin against us.

Save us from the time of trial and deliver us from evil.

For the kingdom, the power, and the glory are yours,

now and forever.

Amen.

Holy Communion – All baptized Christians who seek a taste of the new and forgiven life in Jesus Christ are welcome to receive the sacraments.

We confess and believe that Christ in his risen form is truly present in the Sacrament of bread and wine and that by sharing in this meal, we share in Christ's resurrection.

The ministration of the Sacrament will take place in the pews with individual elements. These are available as you enter; if you missed picking one up and need one, please signal an usher now with a raised hand.

When invited to commune, peel off the bottom tab to eat the bread; peel off the top tab to drink the wine. The waste can go in the paper bag found in each pew.

↑ Invitation to the Table

P: Christ is among us.
Receive the bread of life.

Agnus Dei

Lamb of God, you take a - way the sin of the world; have
mer-cy on us. Lamb of God, you take a - way the sin of the
world; have mer - cy on us. Lamb of God, you take a - way the
sin of the world; grant us peace.

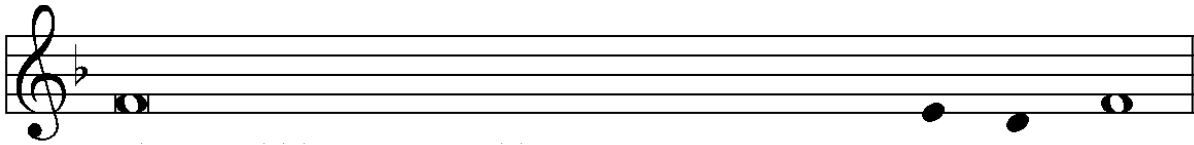
Post Communion Prayer

P: We give you thanks, gracious God,
for the love you show us in this meal.
Send us to bring good news to a hurting world,
and to proclaim your favor to all,
strengthened with the richness of your grace
in your Son, Jesus Christ.

G: Amen.

Announcements

↑ Benediction



P: The Lord bless you and keep you.
The Lord make his face to shine on you
and be gracious to you.
The Lord look upon you with favor and ☩ grant you peace.



G: A - men.

↑ Sending Hymn

The Strife Is O'er, the Battle Done
ELW 366

↑ Dismissal

A: Go in peace. Serve the Lord.

G: Thanks be to God.

Please remain seated until the ushers dismiss you from your pew, and maintain social distancing as we exit. On your way out, put your bulletin back in the baskets on the table if you do not want to take it with you. Offerings may be put in the offering plate as you exit. You may remain in fellowship with one another as long as you like; please respect others' need for social distancing.

Postlude

ANNOUNCEMENTS — APRIL 24

WELCOME! Please fill out a CONNECT card if you are visiting us today, if you wish to receive our emails or newsletter, or if you wish the pastor to contact you. PRAY cards may be used for prayer requests. Place cards in the offering plate as you leave.

ALTAR FLOWERS TODAY are provided by Jean McLauchlan to the glory of God and in thanksgiving for Queen Anne Lutheran.

NURSERY CHILDCARE IS LIVE, BUT ON VOLUNTEER-SUPPORT: Families, our upstairs nursery is available today during worship for your children! However, until we find a more permanent solution to childcare, we need volunteers to make worship accessible to our families going forward. If you can volunteer in the nursery for even one service, please contact the office or add your name to the narthex sign-up sheets. For quite a few weeks, Cathi Unseth has been staffing the nursery for both services; we cannot continue without more support.

RIDWELL VISIT POSTPONED: In honor of Earth Day, we had looked forward to a visit from Annalisa Giust of Ridwell. Unfortunately, Annalisa tested positive for Covid; we pray for good recovery and hope she will join us at a later date.

FORUM TODAY at 9 AM:

Lutheran World Relief: “Not Your Mother’s Quilting Group”

Presented by Rich and Candy Mathes



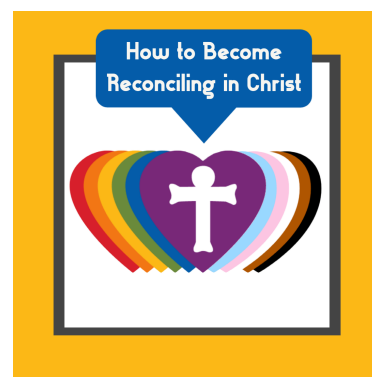
In this session, we will learn about the origins of the QALCW quilting group and how QALC became in charge of loading boxes as well as how those efforts feed into the global LWR efforts. Finally, we will learn more about how to get involved with the quilting group and the LWR efforts in general. Join us in the Conference Room at 9 AM or look for a Zoom link in your weekly email.

FORUM NEXT WEEK at 9 AM:

May 1: Reconciling in Christ

Pastor Tim Feiertag and RIC Committee

Our Reconciling in Christ committee is hosting this forum to hear from Pastor Tim Feiertag of Trinity Lutheran Church, Everett, about his congregation’s experience with the RIC designation. We’ll meet in the Fellowship Hall and look forward to a rich discussion.



THE BLESSING OF THE QUILTS & KITS will be next **Sunday, May 1**, and if you can stay after church that Sunday to help box quilts and kits, please do so.

QA BOOK GROUP meets tomorrow at 7 PM in the narthex to discuss *The Book of Joy: Lasting Happiness in a Changing World* by Dalai Lama, Desmond Tutu, and Douglas Abrams. Liz Major will lead the discussion. All are welcome!

REPRESENTATIVE NEEDED FOR OUR SYNOD ASSEMBLY:

One of our elected QALC representatives to this year's assembly will be unable to attend. The 2022 Synod Assembly is an in-person event on Saturday, June 4, 9 AM – 4 PM at Trinity Lutheran Church in Lynnwood, and registrations are due May 1. Would you be willing and able to represent the congregation there, attending alongside Al Shabino and Pastor Dan? If so, please notify Pastor Dan, a member of our church council, or the church office.

PASTOR'S DISCRETIONARY FUND IS DEPLETED – CAN YOU GIVE? Pastor Dan is thankful to have been able to help a number of people with financial assistance to provide food and prevent eviction during the past year. His Discretionary Fund is currently depleted, and your donations would be welcome. Simply write "Pastor's Discretionary Fund" on the memo line.

SEATTLE LUTHERAN WORLD RELIEF (LWR) SPRING INGATHERING will be **May 13-14** (Friday/Saturday) from 8 AM–2 PM Friday, and 8 AM–11:30 AM Saturday in Our Redeemer's Lutheran Church parking lot. If you can donate a couple of hours hefting 10-40 pound boxes or directing traffic, contact Rich Mathes to volunteer.

MAY 15 ORGAN RECITAL/HYMN FESTIVAL IN MEMORY OF JANICE STAMEY
The family of Janice Stamey invites you to an Organ Recital/Hymn Festival in memory of our mother, Janice Stamey, here at Queen Anne Lutheran Church on Sunday, May 15 at 3 PM. The guest organist will be Aaron David Miller who as a very young child sat on the organ bench as Janice played. She greatly influenced his interest in becoming an organist. We would love to share this celebration with you. – Virginia Stamey-Johnson

UKRAINE RELIEF ACTION:

Please help care for families of Ukraine with your gift today. Offerings may be made to "Queen Anne Lutheran"; please specify "LWR/Ukraine" on your check to donate to Lutheran World Relief's work there, or specify "Lutheran Disaster Response" for the ELCA's relief efforts. Contributions may also be made directly to those funds online or through the mail; flyers are available in the narthex with information.

OFFICE HOURS

Pastor Dan Peterson:
Tuesdays from 1 to 4 PM
Saturdays, 1 to 4 PM.

Cantor Kyle Haugen:
Wednesdays, 1 to 5 PM
Thursdays, 2 to 5 PM.

Main Office (Barb Bash)
Tuesdays–Fridays,
9:00 AM – 5:30 PM.

COVID PROTOCOLS IN WORSHIP AND IN THE BUILDING ARE CHANGING

The Church Council and Worship & Music Committee met this month and made the following changes to our health and safety practices:

- **Sunday Entry:** We will no longer sign in. However, colored nametags, individual communion elements, sanitizer and masks will still be available.
- **Masking,** though still recommended, is now optional both in the building and in worship.
- **Seating:** The **pulpit side** of the sanctuary will remain every-other-pew seating for those who wish to socially distance. Please mask if you sit on that side. The **lectern side** will have seating in every pew, with masking recommended but optional on that side.
- Having **food and drink,** including coffee hour, is now allowed. We encourage food to be self-served using tongs, and drinks self-served from urns or pitchers. (Would you like to host coffee hour? A sign-up sheet is now on the narthex railing.)
- **Small groups** may make a group decision about their masking, sign-in, and food or drink practices.
- **During the week,** the main double doors will be open during office hours; you no longer need to sign in at the chapel.
- **Evening and weekend entry:** The member's keypad code for the McGraw Street door is now available for use for evening and weekend meetings and activities. (Contact the office if you need the code for entry.)



COMMUNION PRACTICE WILL CHANGE SOON

We plan to make traditional communion available soon, using the 1-oz individual glass cups in trays. This will begin once we receive a special dishwashing rack (on order) for washing the cups after use. Here is how this will work:

- During worship, Pastor Dan will first commune those who wish to continue using individual “communables” in their pews. Communables will continue to be available in the narthex to pick up as you enter.
- Next, Pastor Dan will commune those who wish to come forward, using the glass cups in trays and bread. He will wear gloves as a precaution.
- Then, he will commune those who raise a hand, by going out to them where they are seated to offer the elements.

IN OUR PRAYERS THIS WEEK:

Email new prayer requests to pastor@queenannelutheran.org,
text/call Pastor Dan at 253-230-9695, or leave a PRAY card in the offering plate.

Georgina Robinson, starting chemotherapy
For Annie, Susan Evans' friend, on hospice care.
For the Unseth family, following Mindy's death
Family of Cameron Stephan upon his death
Jessica and parents, for healing & support
For John Reese's friend, upon the sudden death
of his friend's adult son
Phoebe Porter's friend Jewel, for good health
Ken Hockman, recovering at home
Kristine, Joan Kavanaugh's cousin
Megan Schutte's grandmother, Cherie, & family
Betty M., in hope and gratitude
David Erickson, Karen McCullough's brother,
with multiple myeloma
Sherry Moody on the death of her husband,
Tim

Almaz's mother,	Hilde Glore
Awetash	Lee Mathis
and brother,	Deb Rosenthal
Mulugeta	Barbara Koziol
John Reese's son-in-	Mary Gallagher
law, Jim Garrison	Barb Gayotin
Carol Ann's	Carol S.
colleague, Peter	Ruth Ghormley
Jan Olson,	Denny Alfson
in memory of Linda	
Ben Matter	
Jean McLauchlan	

THIS WEEK'S CALENDAR

Sunday, April 24

Worship	8:00 AM
Forum (Conf. Rm/Zoom)	9:00 AM
Worship	10:30 AM

Monday

QA Book Group (narthex)	7:00 PM
-------------------------	---------

Wednesday

Sewing and Service (Fireside)	10:00 AM
Staff Meeting (Conf. Rm)	3:30 PM
AA Counterbalance (FH)	8:00 PM

Thursday

Choir Rehearsal	7:00 PM
-----------------	---------

Friday

Providing dinner at New Horizons *evening*

Saturday

AGO Tacoma Chapter visit (organ)	9:30 AM
Alanon Women (upstairs)	10:30 AM
AA Shanty Trudgers (upstairs)	7:00 PM

Sunday, May 1

Worship	8:00 AM
Forum (Fellowship Hall)	9:00 AM

SERVING SUNDAY, MAY 1

GREETERS:

Needed (8 AM)

Needed (10:30 AM)

USHERS:

Needed (8 AM)

Denny Alfson, Don Thomas (10:30 AM)

ASSISTING IN WORSHIP:

Jan Olson (8 AM)

Joan Kavanaugh (10:30 AM)

ACOLYTE: Porters

CHILDCARE:

Two Volunteers Needed (8 AM)

Two Volunteers Needed (10:30 AM)

COUNTERS:

TBD

AUDIO: Connie Wurm

