



Queen Anne

LUTHERAN CHURCH

Called to Proclaim God's Love in Christ for Every Person

2400 Eighth Avenue West
Seattle, Washington 98119

Mailing Address: P.O. Box 17029 • Seattle, WA 98127

206.284.1960 • www.queenannelutheran.org

✧ *Staff* ✧

Pastor	Rev. Dr. Daniel Peterson
Cantor	Kyle Haugen
Parish Administrator	Barbara Bash
Sexton	John Bryant

✧ *Serving as leaders of worship today* ✧

Guest Pastor	Rev. Mel Jacob
Lector and Intercessor	Carol Ann Davis
Greeter and Communion Assistant	

Welcome to Queen Anne Lutheran Church! We are delighted that we can share this time together. Whatever has led you here, consider yourself part of the community.

Please fill out a card from the pew rack if you are visiting us today, if you have a prayer request, if you wish to receive our newsletter, or if you wish the pastor to contact you. Simply place the card in the offering plate as you exit.

Silencing your cell phone is a good gift you can give to your fellow worshipers.

Children are always welcome in worship! There are "Quiet Bags" with books and soft toys, or "Doodle Bags" with paper and markers for children to use in the pews.

Child Care is available on the second floor, which can be accessed by the elevator or the two stairways. An usher can assist you. The narthex area is also available for you if your child needs a break from the service. Audio from worship can be heard there.

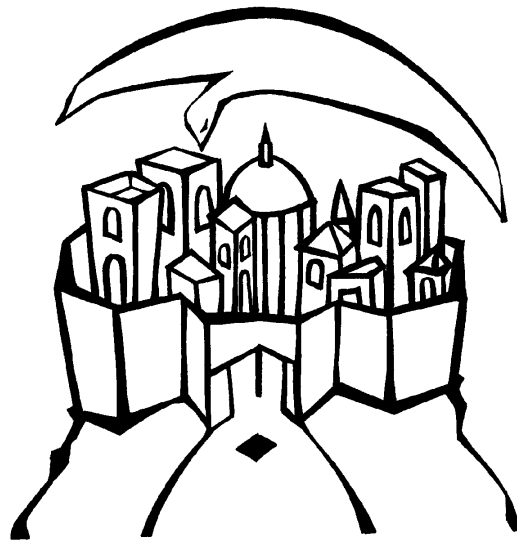
Hearing Assisted Radio Transmitters are available. Please ask an usher for assistance.

This service is being audio-recorded, and will be posted online for those who wish to listen at home.

ELEVENTH SUNDAY AFTER PENTECOST

August 21, 2022

10:00 AM



↑ = Stand **C**: Congregation **A**: Worship Assistant **P**: Presiding Minister

Hymns may be found in the red hymnals in the pews.
Large-print hymns are available in the narthex as you enter.

Quiet Bags with books and soft toys, or Doodle Bags with markers
are also available in the narthex for children.

Prelude

Two organ settings of FESTAL SONG (ELW 314)

by contemporary composers: Ronald A. Nelson (b. 1929)

Jacob B. Weber (b. 1988)

Introit

Psalm 145: 18, 21, 14

The LORD is near to all who call, to all who call upon the LORD in truth.
My mouth shall speak the praise of the LORD;
let all flesh bless God's holy name forever and ever. The LORD upholds
all those who fall, and lifts up those who are bowed down.

Welcome

↑ **Gathering Hymn**

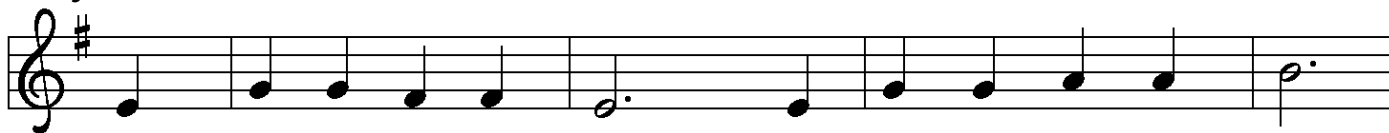
Arise, Your Light Has Come
ELW 314

↑ **Greeting**

P: The grace of our Lord Jesus Christ, the love of God,
and the communion of the Holy Spirit be with you all.

C: And also with you.

↑ Kyrie



- 1 Have mer - cy on us, Lord, and hear our sol - emn prayer.
- 2 Have mer - cy on us, Christ, and wash a - way our sin.
- 3 Have mer - cy on us, Lord; make sin and shame de - part.



We come to hear your liv - ing word; it saves us from de - spair.
Pour out your grace and make us whole that new life may be - gin.
Re - new us with your sav - ing pow'r; cre - ate in us new hearts!

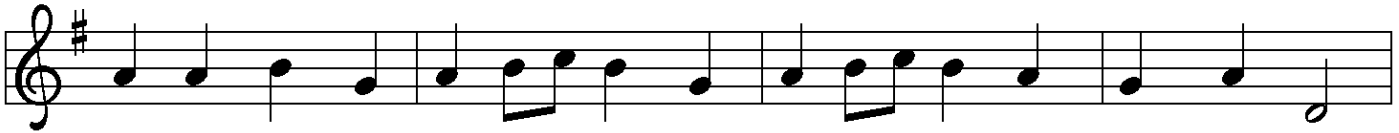
↑ Hymn Of Praise



- 1 Glo-ry be to God in heav - en; peace, good-will to all the earth.
- 2 Glo-ry be to Christ for - ev - er, Lamb of God and Lord of love.
- 3 Ho - ly One we now ac-claim you; Lord a - lone, to you we call;



Might-y God of all cre - a - tion, Fa - ther of sur - pass - ing worth:
Son of God and gra - cious Sav - ior, you have come from heav'n a - bove;
Ho - ly One in faith we name you, God most high, yet near to all:



we ex - alt you, we a - dore you, we lift high our thanks and praise.
 on the cross you died to save us; now you reign at God's right hand.
 Je - sus Christ, with God the Spir - it, in the Fa - ther's splen - dor bright.



Saints and an - gels bow be - fore you; here on earth our songs we raise.
 Hear our prayer; re - store, for - give us; in your prom - ise firm we stand.
 For the peace that we in - her - it, glo - ry be to God on high!

↑Prayer of the Day

P: The Lord be with you.

G: **And also with you.**

P: Let us pray.

O God, mighty and immortal,
 you know that as fragile creatures surrounded by great dangers,
 we cannot by ourselves stand upright.

Give us strength of mind and body,
 so that even when we suffer because of human sin,
 we may rise victorious
 through your Son, Jesus Christ, our Savior and Lord.

G: **Amen.**

First Reading

Isaiah 58:9b-14

A: Word of God, Word of life.

G: **Thanks be to God.**

Second Reading

Hebrews 12:18-13:1

A: Word of God, Word of life.

G: **Thanks be to God.**

↑ Gospel Acclamation



Al - le-lu - ia! Lord and Sav - ior: o - pen now your sav - ing word.



Let it burn like fire with - in us; speak un - til our hearts are stirred.



Al - le - lu - ia! Lord, we sing for the good news that you bring.

↑ The Holy Gospel

Luke 13:10-17

☐: The Gospel according to St. Luke, the thirteenth chapter.

☑: **Glory to you, O Lord.**

Following the reading

☐: The Gospel of the Lord.

☑: **Praise to you, O Christ.**

Sermon

Pastor Mel Jacob

↑ Hymn of the Day

How Firm a Foundation
ELW, Hymn 796

↑ Apostles' Creed

☩: I believe in God, the Father almighty,
creator of heaven and earth.

I believe in Jesus Christ, God's only Son, our Lord,
who was conceived by the Holy Spirit,
born of the virgin Mary,
suffered under Pontius Pilate,
was crucified, died, and was buried;
he descended to the dead.

On the third day he rose again; he ascended into heaven,
he is seated at the right hand of the Father,
and he will come again to judge
the living and the dead.

I believe in the Holy Spirit,
the holy catholic church,
the communion of saints,
the forgiveness of sins,
the resurrection of the body,
and the life everlasting.
Amen.



Prayers of the Church

A: . . . Lord, in your mercy,
☩: hear our prayer.

Holy Communion – All baptized Christians who seek a taste of the new and forgiven life in Jesus Christ are welcome to receive the sacraments. We confess and believe that Christ in his risen form is truly present in the Sacrament of bread and wine and that by sharing in this meal, we share in Christ’s resurrection.

The ministration of the Sacrament is given in two ways:

In the pew:

You may commune in the pews with individual elements. These are available in the narthex as you enter.

When invited to commune, peel off the bottom tab to eat the bread; peel off the top tab to drink the wine. The waste can go in the paper bag found in each pew.

By intinction:

Come down the center aisle; please sanitize your hands. Receive a wafer in your hands. Dip it in a chalice, either wine or grape juice, before partaking. Continue to your right and use the outside aisle to return to your seat.

If you prefer to receive only bread, be assured that you are receiving the full presence of God.

↑ **The Great Thanksgiving**

P: The Lord be with you.

C: **And also with you.**

P: Lift up your hearts.

C: **We lift them to the Lord.**

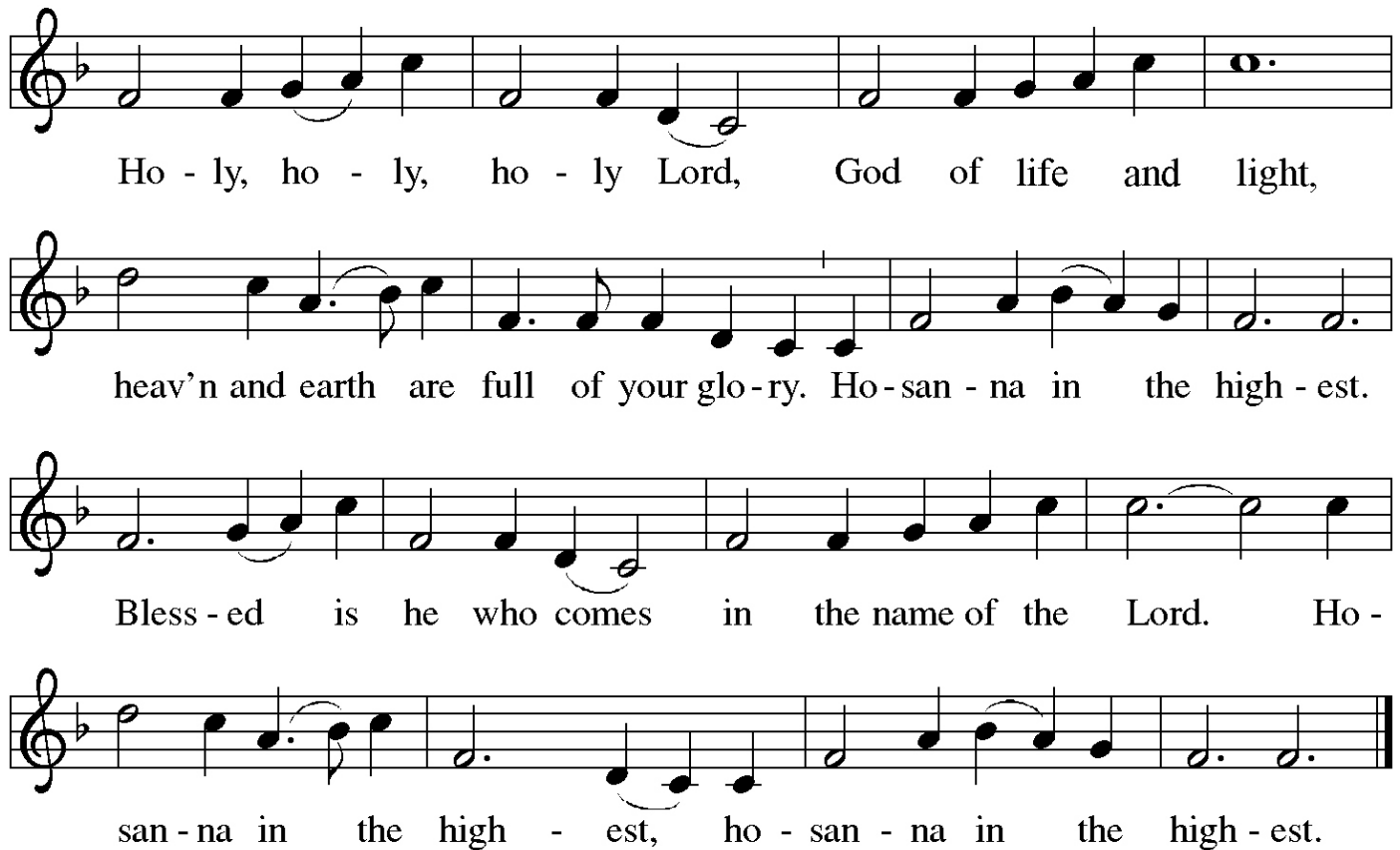
P: Let us give thanks to the Lord our God.

C: **It is right to give our thanks and praise.**

P: It is indeed right, our duty and our joy . . .

. . . praise your name and join their unending hymn:

↑ Sanctus



Ho - ly, ho - ly, ho - ly Lord, God of life and light,
heav'n and earth are full of your glo-ry. Ho-san - na in the high - est.
Bless - ed is he who comes in the name of the Lord. Ho -
san - na in the high - est, ho - san - na in the high - est.

↑ Words of Institution

↑ Lord's Prayer

P: Lord, inspire us to work toward your kingdom and teach us to pray:

G: **Our Father in heaven, hallowed be your name,
your kingdom come, your will be done,
on earth as in heaven.**

Give us today our daily bread

and forgive us our sins as we forgive those who sin against us.

Save us from the time of trial and deliver us from evil.

For the kingdom, the power, and the glory are yours,

now and forever. Amen.

↑ Invitation to the Table

P: Christ is among us.

Receive the bread of life.

Agnus Dei



1 O Lamb of God, you bear the sin of all the world a - way;
2 O Lamb of God, you bear the sin of all the world a - way;
3 O Lamb of God, you bear the sin of all the world a - way;



you suf-fered death our lives to save: have mer-cy now, we pray.
you set us free from guilt and grave: have mer-cy now, we pray.
e - ter-nal peace with God you made: give us your peace, we pray.

Post Communion Prayer

P: Life-giving God,
through this meal you have bandaged our wounds
and fed us with your mercy.
Now send us forth to live for others, both friend and stranger,
that all may come to know your love.
This we pray in the name of Jesus.

G: Amen.

Announcements

↑ Benediction

P: The Lord bless you and keep you.
The Lord make his face to shine on you
and be gracious to you.
The Lord look upon you with favor and † grant you peace.

G: Amen.

↑ Sending Hymn

O Day of Rest and Gladness
ELW 521

↑ Dismissal

A: Go in peace. Serve the Lord.

G: Thanks be to God.

Postlude

Tocatta in C major
Wilhelm Friedrich Ernst Bach (1759–1845)

Please note that the postlude may feature the full organ.

Please maintain social distancing as we exit. On your way out, put your bulletin back in the baskets on the table if you do not want to take it with you. Offerings may be put in the offering plate as you exit. You may remain in fellowship with one another as long as you like.

About Today's Music:

Two of today's hymns break out from their usual sections in *Evangelical Lutheran Worship* (ELW) to serve today's themes and readings.

Our Gathering Hymn (ELW 314, "Arise, Your Light Has Come") is found in the "Time After Epiphany" section. Yet this hymn (by modern hymnwriter Ruth Duck) nicely prepares us for today's Gospel, in which Jesus heals a woman who was "quite unable to stand up straight." One can almost imagine the healed woman singing these words as she "began praising God" immediately after her healing.

Our Sending Hymn (ELW 521, "O Day of Rest and Gladness") is from ELW's "Gathering" section, yet the words work well as a follow-on to today's readings and as a reflection upon the gifts God offers us through Word and Sacrament each Sunday. – Cantor Kyle

ANNOUNCEMENTS — AUGUST 21

WELCOME! Please fill out a CONNECT card if you are visiting us today, if you wish to receive our emails or newsletter, or if you wish the pastor to contact you. PRAY cards may be used for prayer requests. Place cards in the offering plate as you leave.

CHILDCARE: Our upstairs nursery is staffed and available. Van Keo and Christian Louie are our anchors upstairs for the summer.

WE WELCOME PASTOR MEL JACOB to our worship today. Ordained for 47 years, Pastor Mel Jacob was a parish pastor, a Chaplain (COL-Ret) in the US Army Reserves and a V.A. Chaplain. He is mostly remembered as the Founder/ Developer/ Executive Director of Lutheran Counseling Services in Orlando, Florida. Pastor Mel has worked with eight denominations in areas of consultation, candidacy, conflict resolution, and counseling for their workers and families. He has a long history working with veterans recovering from emotional war wounds, and since 2016 has contributed to the interdenominational endeavors of Food for the Poor. Pastor Mel and his family have just returned from a week at Holden Village.



BOTTLE CAPS FOR RIDWELL: Bring your **loose bottle caps** in for Ridwell collection **next Sunday, August 28**. They can take clean, loose plastic bottle caps and screw-on food-pouch tops in all sizes and colors. Caps and pouch tops should be only plastic; free of paper, metal labels and seals, or aluminum wires.

COUNTERS' GATHERING: A reminder to all Counters that our annual meeting is this afternoon at 3:00 pm at the Mangold Dittes House.

PASTOR DAN will return to work this Thursday, August 25, and to the pulpit next Sunday, August 28. He is available to contact in case of emergencies: 253-230-9695.

If you need immediate pastoral care, contact **Pastor Kristy Daniels**, Church of Steadfast Love, at (206) 474-1007 or email PastorKristy@compasshousingalliance.org

OFFICE HOURS THIS WEEK

Main Office (Barb Bash)

Tuesdays – Fridays, 9:00 AM – 5:30 PM

Cantor Kyle Haugen:

Wednesday, 1 to 5 PM; Thursday, 2 to 5 PM

Pastor Dan Peterson:

Saturday, 1-3 PM

SERVING NEXT SUNDAY, AUGUST 28:

Greeter/Communion: Liz Major

Lector/Intercessor /Communion:

Susan Evans

Ushers: Don Thomas, Denny Alfson

Counters: John Reese, Barb Bach

Audio: Connie Wurm

Stop by the narthex table to sign up to help in worship.

WE ARE SEEKING A CHILDREN'S MINISTRY COORDINATOR

(Please spread the word!)

Queen Anne Lutheran Church, Seattle, WA, is seeking an enthusiastic, grace-centered individual to lead our Sunday School program and assist in the Teen programming. The position requires coordinating with the Pastor and Sunday School Committee to identify and schedule an appropriate curriculum (preschool-sixth grade). The successful candidate will also work with the Worship and Music Committee as it seeks to involve children in the worship life of our church. The ideal candidate will have prior experience working with children and families in a ministry context, though experience in other areas may be applicable. Completion of college education in religion or education is desired, but not required. This is a part-time position (10-15 hours a week). Compensation will be based on prior experience and time commitment. To apply, please send cover letter and resume to personnel@queenannelutheran.org by September 9. Contact the same email with any questions you have about the position.



TICKETS AVAILABLE FOR "TASTE OF QUEEN ANNE" THIS SATURDAY 8/27 – WANT SOME?

Join Queen Anne Helpline for their annual "Taste of Queen Anne" event on **Saturday, August 27 from 12 to 3 PM!** They will be in Crockett Plaza with a variety of tastes from Queen Anne's best restaurants. Tickets are \$40 each – but, because this year QALC is an official "Ruby-level" Sponsor, we receive **four free tickets to this event (one is still available) and 25%-off pricing** for additional attendees. Please call or email the church office if you would like tickets; first-come, first-served!

QA Helpline also needs volunteers for the "Taste of Queen Anne" event and in their office. Visit their website to jump in: www.queenannehelpline.org/events

REGISTER NOW FOR OUR NW WA SYNOD WOMEN'S RETREAT

Join your sisters in Christ for the one-day retreat **Saturday, Oct. 1, 2022** at Bethlehem Lutheran Church in Marysville. Registration forms are on the narthex table, or find the link in your Friday email. Registrations are **due September 1.**

The theme is "Woven Together in Love." We will explore how God's love weaves us together in our daily challenges, hope, and healing for our families, our communities, and our world.

CORE TANZANIA EVENT THIS TUESDAY:

A poster for a 'SAVE THE DATE!' event. The background is a collage of smiling children. The text is overlaid on the image. At the top right is a logo of a person with arms raised, surrounded by colorful rays. The text reads: 'SAVE THE DATE!', 'Tuesday, August 23', '4:30 – 6:30 PM', 'Twegashe School Phase 2 Groundbreaking Celebration', 'At the Banobi home 6709 Earl Ave NW Seattle', and 'Come celebrate with us!' at the bottom.

SAVE THE DATE!

Tuesday, August 23
4:30 – 6:30 PM

Twegashe School Phase 2
Groundbreaking
Celebration

At the Banobi home
6709 Earl Ave NW
Seattle

Come celebrate with us!

NEW HORIZONS MINISTRY NEEDS A DINNER PROVIDED for Wednesday, August 31. Jim Margard went out on a limb for us and said, "Sure!" The main course (a vegetable and chicken stew) and bread are accounted for, and Jim will be in Seattle to do any pick-ups if needed for any other dishes (dessert, salad). Please let him know if you are willing and able to provide one of those dishes: jrm952@gmail.com

We now know that our "**GOD'S WORK, OUR HANDS**" project on Saturday 9/24 will be at Martha Washington Park, in coordination with Forterra, clearing invasive vegetation and planting bulbs and maybe other plants. Details will follow!

I DON'T SEW – HOW CAN I HELP WITH LWR PROJECTS?

1 **Donations are still needed for our BABY LAYETTES.** Watch for **12- to 18-months sized jackets** for the Baby Layettes. That was the item most needed when items were last counted! Other items include **T-shirts, knit pants**, (Most useful sizes are 9-18 months), **layette gowns, socks, diapers/pins, and blankets**. Questions? Ask Jennifer Jones.



2 **LWR SCHOOL SUPPLIES – Needed Donations** Please go shopping during "back to school sales," to help us create School Kits for LWR and CORE Tanzania.



Our goal is 75 School Kits. We'll assemble kits October 15. Each kit needs:

- Five ballpoint pens – black or blue ink. No gel pens. You can buy larger sets – we'll re-package them in fives.
- Ruler – must be metric. Wood-with-a-metal edge; metal, or hard plastic
- Pencil Sharpener.
- Blunt Scissors
- Crayons – 24-pack
- 2.5" Eraser
- Four 70-page spiral bound notebooks – college or wide ruled. (So, for 75 kits, we need 300 notebooks.)
- *No pencils are needed at this time.*

And where to buy these items? Some stores only put one or two items on sale, and not all stores in a chain have the same specials. Recent scouting found:

- **Pencil sharpeners:** 65 cents @Target; or, a two-hole, \$1 pencil sharpener @Fred Meyer (larger hole for crayons.).
- **Crayons:** 50 cents/box of 24 @Fred Meyer
- **Pens:** Papermate or Bic , 10 for 99 cents @Target. Buy black or blue ink only. Or buy 10 for \$1.00 for another brand @Fred Meyer.
- **2.5 " Erasers:** 3-pack for \$1.49 @Target. 3 for \$1 @Fred Meyer.
- **Rulers:** Please do not buy wood IF there's no metal edge. Plastic rulers (metric, too) are \$0.79 @Fred Meyer
- **Blunt scissors:** \$1.49 for two @Target; 50 cents for one @Fred Meyer
- **70-count notebooks:** wide or college-ruled. Look for 25 cents each.