



Queen Anne

LUTHERAN CHURCH

*Called to Proclaim God's Love in Christ for Every Person*

2400 Eighth Avenue West  
Seattle, Washington 98119

*Mailing Address: P.O. Box 17029 • Seattle, WA 98127*

206.284.1960 • [www.queenannelutheran.org](http://www.queenannelutheran.org)

✧ *Staff* ✧

Pastor	Rev. Dr. Daniel Peterson
Cantor	Kyle Haugen
Parish Administrator	Barbara Bash
Sexton	John Bryant

✧ *Serving as leaders of worship today* ✧

Lector and Intercessor	Susan Evans
Greeter and Communion Assistant	Liz Major

**Welcome** to Queen Anne Lutheran Church! We are delighted that we can share this time together. Whatever has led you here, consider yourself part of the community.

**Please fill out a card** from the pew rack if you are visiting us today, if you have a prayer request, if you wish to receive our newsletter, or if you wish the pastor to contact you. Simply place the card in the offering plate as you exit.

**Silencing your cell phone** is a good gift you can give to your fellow worshipers.

**Children** are always welcome in worship! There are “Quiet Bags” with books and soft toys, or “Doodle Bags” with paper and markers for children to use in the pews.

**Child Care is available** on the second floor, which can be accessed by the elevator or the two stairways. An usher can assist you. The narthex area is also available for you if your child needs a break from the service. Audio from worship can be heard there.

**Hearing Assisted Radio Transmitters** are available. Please ask an usher for assistance.

**This service is being audio-recorded**, and will be posted online for those who wish to listen at home.

# TWELFTH SUNDAY AFTER PENTECOST

August 28, 2022

10:00 AM



↑ = *Stand*   **C**: *Congregation*   **A**: *Worship Assistant*   **P**: *Presiding Minister*

Hymns may be found in the red hymnals in the pews.

Large-print hymns are available in the narthex as you enter.

Quiet Bags with books and soft toys, or Doodle Bags with markers  
are also available in the narthex for children.

## Prelude

*Free improvisation on TWO OAKS (ELW 641)*

## Introit

**Psalm 75: 1, 2, 6, 9**

We give you thanks, O God, we give you thanks, calling upon your name and declaring all your wonderful deeds. "I will appoint a time," says God; "I will judge with equity. For exaltation comes neither from the east nor from the west, nor does it come from the wilderness. But I will rejoice forever; I will sing praises to the God of Jacob.

## Welcome

↑ **Gathering Hymn**

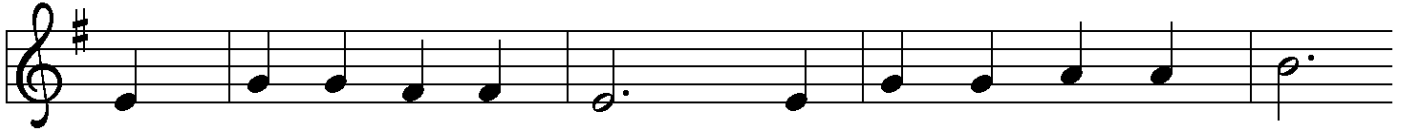
*All Are Welcome*  
**ELW 641**

↑ **Greeting**

**P**: The grace of our Lord Jesus Christ, the love of God,  
and the communion of the Holy Spirit be with you all.

**C**: **And also with you.**

## ↑ Kyrie



- 1 Have mer - cy on us, Lord, and hear our sol - emn prayer.
- 2 Have mer - cy on us, Christ, and wash a - way our sin.
- 3 Have mer - cy on us, Lord; make sin and shame de - part.



We come to hear your liv - ing word; it saves us from de - spair.  
Pour out your grace and make us whole that new life may be - gin.  
Re - new us with your sav - ing pow'r; cre - ate in us new hearts!

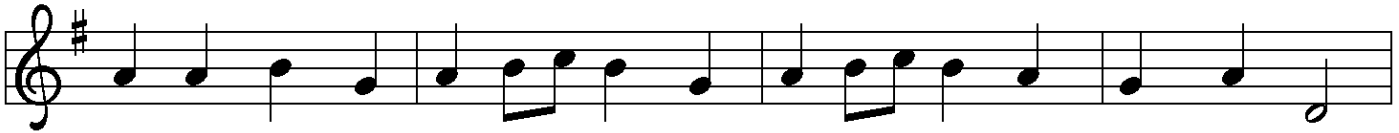
## ↑ Hymn Of Praise



- 1 Glo-ry be to God in heav - en; peace, good-will to all the earth.
- 2 Glo-ry be to Christ for - ev - er, Lamb of God and Lord of love.
- 3 Ho - ly One we now ac-claim you; Lord a - lone, to you we call;



Might-y God of all cre - a - tion, Fa - ther of sur - pass - ing worth:  
Son of God and gra - cious Sav - ior, you have come from heav'n a - bove;  
Ho - ly One in faith we name you, God most high, yet near to all:



we ex - alt you, we a - dore you, we lift high our thanks and praise.  
 on the cross you died to save us; now you reign at God's right hand.  
 Je - sus Christ, with God the Spir - it, in the Fa - ther's splen - dor bright.



Saints and an - gels bow be - fore you; here on earth our songs we raise.  
 Hear our prayer; re - store, for - give us; in your prom - ise firm we stand.  
 For the peace that we in - her - it, glo - ry be to God on high!

### ↑Prayer of the Day

**P**: The Lord be with you.

**G**: **And also with you.**

**P**: Let us pray.

O God, you resist those who are proud  
 and empower those who are humble.

Give us the humility of your Son,  
 that we may embody the generosity of Jesus Christ,  
 our Savior and Lord.

**G**: **Amen.**

### First Reading

**Proverbs 25:6-7**

**A**: Word of God, Word of life.

**G**: **Thanks be to God.**

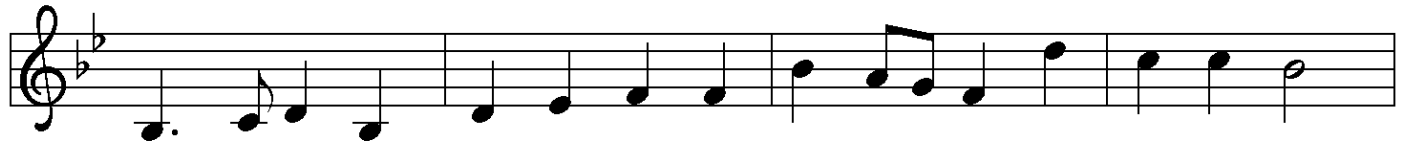
### Second Reading

**Hebrews 13:1-8, 15-16**

**A**: Word of God, Word of life.

**G**: **Thanks be to God.**

↑ Gospel Acclamation



Al - le-lu - ia! Lord and Sav - ior: o - pen now your sav - ing word.



Let it burn like fire with - in us; speak un - til our hearts are stirred.



Al - le - lu - ia! Lord, we sing for the good news that you bring.

↑ The Holy Gospel

Luke 14:1, 7-14

☐: The Gospel according to St. Luke, the thirteenth chapter.

☑: **Glory to you, O Lord.**

*Following the reading*

☐: The Gospel of the Lord.

☑: **Praise to you, O Christ.**

Sermon

Pastor Dan

↑ Hymn of the Day

*Christ, Be Our Light*  
ELW, Hymn 715

## ↑ Apostles' Creed

**☩**: I believe in God, the Father almighty,  
creator of heaven and earth.

I believe in Jesus Christ, God's only Son, our Lord,  
who was conceived by the Holy Spirit,  
born of the virgin Mary,  
suffered under Pontius Pilate,  
was crucified, died, and was buried;  
he descended to the dead.

On the third day he rose again; he ascended into heaven,  
he is seated at the right hand of the Father,  
and he will come again to judge  
the living and the dead.

I believe in the Holy Spirit,  
the holy catholic church,  
the communion of saints,  
the forgiveness of sins,  
the resurrection of the body,  
and the life everlasting.  
Amen.



## Prayers of the Church

**A**: . . . Lord, in your mercy,  
**☩**: hear our prayer.

**Holy Communion** – All baptized Christians who seek a taste of the new and forgiven life in Jesus Christ are welcome to receive the sacraments. We confess and believe that Christ in his risen form is truly present in the Sacrament of bread and wine and that by sharing in this meal, we share in Christ’s resurrection.

The ministration of the Sacrament is given in two ways:

**In the pew:**

You may commune in the pews with individual elements. These are available in the narthex as you enter.

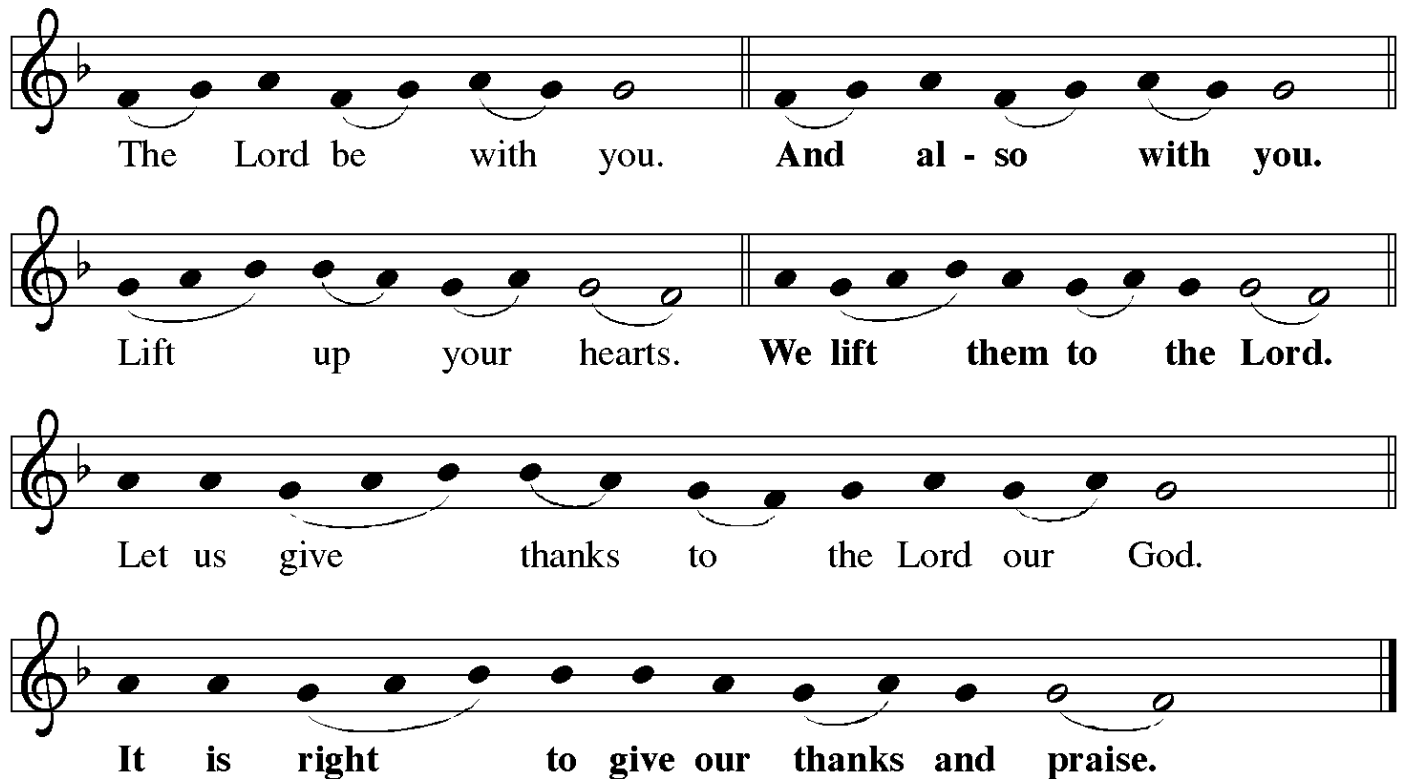
When invited to commune, peel off the bottom tab to eat the bread; peel off the top tab to drink the wine. The waste can go in the paper bag found in each pew.

**By intinction:**

Come down the center aisle; please sanitize your hands. Receive a wafer in your hands. Dip it in a chalice, either wine or grape juice, before partaking. Continue to your right and use the outside aisle to return to your seat.

If you prefer to receive only bread, be assured that you are receiving the full presence of God.

↑ **The Great Thanksgiving**



The Lord be with you. And al - so with you.

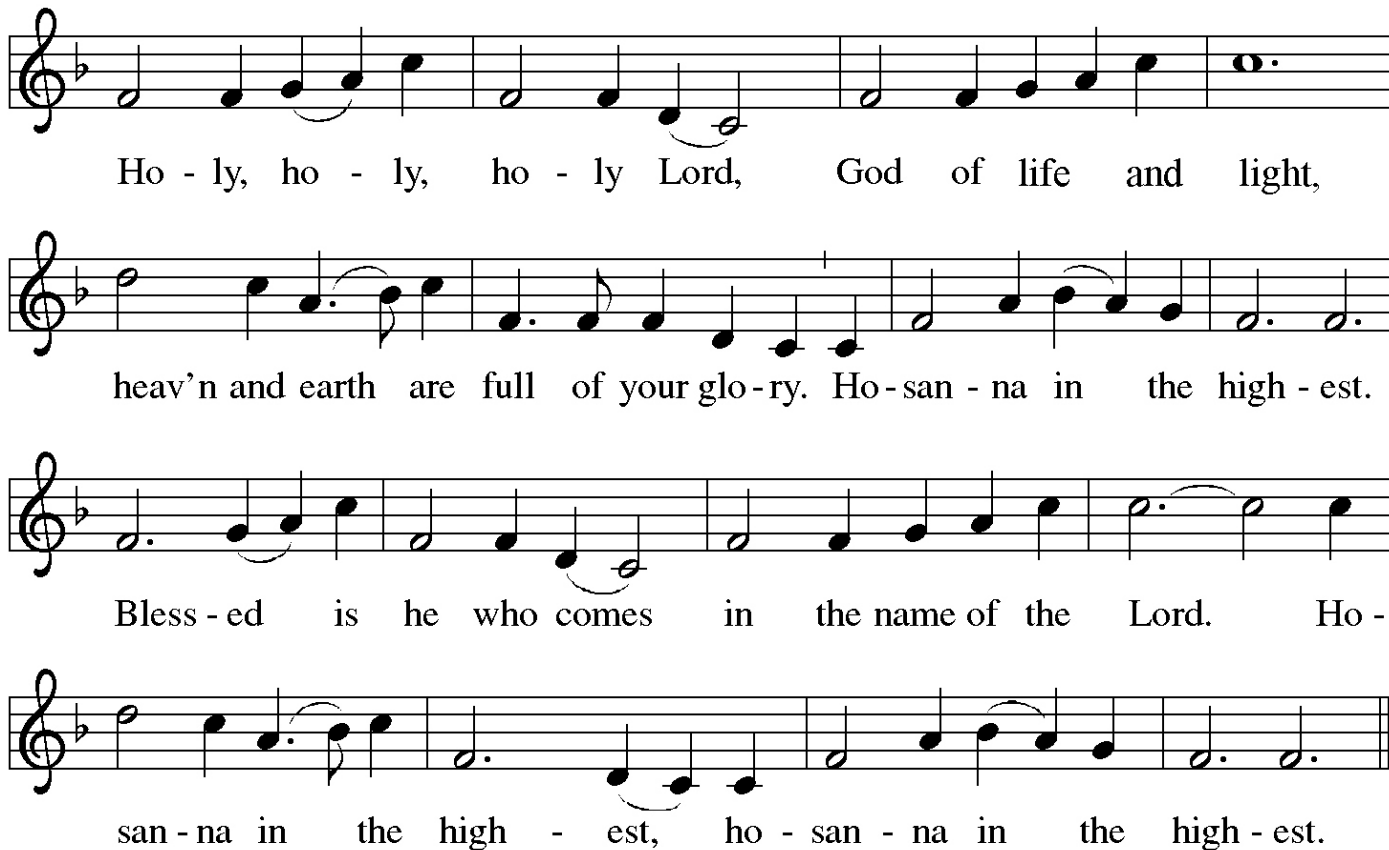
Lift up your hearts. We lift them to the Lord.

Let us give thanks to the Lord our God.

It is right to give our thanks and praise.

**P**: It is indeed right, our duty and our joy . . .  
 . . . praise your name and join their unending hymn:

↑ **Sanctus**



Ho - ly, ho - ly, ho - ly Lord, God of life and light,  
heav'n and earth are full of your glo-ry. Ho-san - na in the high - est.  
Bless - ed is he who comes in the name of the Lord. Ho -  
san - na in the high - est, ho - san - na in the high - est.

↑ **Words of Institution**

↑ **Lord's Prayer**

**P**: Lord, inspire us to work toward your kingdom and teach us to pray:

**C**: **Our Father in heaven, hallowed be your name,  
your kingdom come, your will be done,  
on earth as in heaven.  
Give us today our daily bread  
and forgive us our sins as we forgive those who sin against us.  
Save us from the time of trial and deliver us from evil.  
For the kingdom, the power, and the glory are yours,  
now and forever. Amen.**



## ↑ Invitation to the Table

**P**: Christ is among us.  
Receive the bread of life.

## Agnus Dei



1 O Lamb of God, you bear the sin of all the world a - way;  
2 O Lamb of God, you bear the sin of all the world a - way;  
3 O Lamb of God, you bear the sin of all the world a - way;



you suf-fered death our lives to save: have mer-cy now, we pray.  
you set us free from guilt and grave: have mer-cy now, we pray.  
e - ter-nal peace with God you made: give us your peace, we pray.

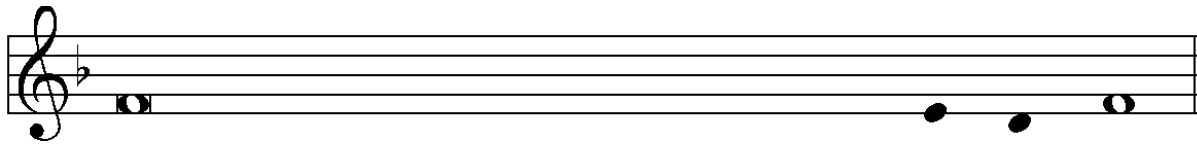
## Post Communion Prayer

**P**: Life-giving God,  
through this meal you have bandaged our wounds  
and fed us with your mercy.  
Now send us forth to live for others, both friend and stranger,  
that all may come to know your love.  
This we pray in the name of Jesus.

**G**: Amen.

## Announcements

↑ **Benediction**



**P:** The Lord bless you and keep you.  
The Lord make his face to shine on you  
and be gracious to you.  
The Lord look upon you with favor and † grant you peace.



**C:** A - men.

↑ **Sending Hymn**

*Rise Up, O Saints of God!*  
ELW 669

↑ **Dismissal**

**A:** Go in peace. Serve the Lord.  
**C:** Thanks be to God.

**Postlude**

*Menuet Gothique*  
Léon Boëllmann (1862-1897)

*Please note that the postlude may feature the full organ.*

*Please maintain social distancing as we exit. On your way out, put your bulletin back in the baskets on the table if you do not want to take it with you. Offerings may be put in the offering plate as you exit. You may remain in fellowship with one another as long as you like.*

*This Sunday, all are invited to the Fellowship Hall after worship to meet in conversation with our visiting international scholars, led by Prof. Beatrice Lawrence of Seattle University.*

## About Today's Music:

A hymn in *Evangelical Lutheran Worship* has several components. The *text*—the poetic words we sing—is usually considered the primary element. The *tune* (also sometimes referred to as the *chorale melody*) may be composed for the text or exist independently; the tune name is usually given in SMALL CAPITAL LETTERS in most U.S. hymnals. The poetic *meter* is the number syllables per line, given in most hymnals as a succession of numbers, such as “5 5 8 8 5 5” or as an abbreviation (such as CM for common meter, which is 8 6 8 6). The *setting* refers to the musical arrangement, including harmony (if applicable). Beloved *tunes* may be associated with multiple *texts* that fit the same *meter*.

This week's Sending Hymn (ELW 669, “Rise Up, O Saints of God”) shares the same tune, FESTAL SONG, as last week's Gathering Hymn (ELW 314, “Arise, Your Light Has Come!”). The texts of these two hymns have interesting histories. Roughly sixty years before both of these hymns, Presbyterian pastor, pacifist, and author William Pierson Merrill (1867–1954) wrote “Rise Up, O Men of God!” for a men's ministry movement; the words were paired with the existing tune FESTAL SONG in 1912. This hymn gained popularity and is still occasionally sung by men's choirs. In the early 1970s, Ruth Duck (b. 1947) sought to revise Merrill's text, avoiding its male-specific language while keeping the FESTAL SONG tune. Her result, “Arise, Your Light Has Come!” launched her celebrated hymn-writing career and was first sung at an ecumenical women's event in 1974. Similarly, for “Rise Up, O Saints of God,” Norman O. Forness (1936–2009, a PLU and UW graduate) intentionally used the same first three words of the 1911 hymn for a new trinitarian hymn, which was first published in 1978 with FESTAL SONG in *Lutheran Book of Worship*.  
— Cantor Kyle

## ANNOUNCEMENTS — AUGUST 28

**WELCOME!** Please fill out a CONNECT card if you are visiting us today, if you wish to receive our emails or newsletter, or if you wish the pastor to contact you. PRAY cards may be used for prayer requests. Place cards in the offering plate as you leave.

**CHILDCARE:** Our upstairs nursery is staffed and available. Van Keo and Christian Louie are our anchors upstairs for the summer.

**ALTAR FLOWERS** were provided today by Shirley Flory to the glory of God and in gratitude for the life, loved ones, and community she has been given.

**WE WELCOME TO WORSHIP TODAY** a group of visiting international scholars studying religion in America headed by Prof. Beatrice Lawrence from Seattle University; please extend your welcome in conversation as we meet in the Fellowship Hall after the service!

**BOTTLE CAPS FOR RIDWELL TODAY:** Did you bring your **loose bottle caps** in for Ridwell collection this week? Contact Lisa Kjaer if you need to make a late donation. Ridwell picks up early Tuesday mornings.

**NEW HORIZONS MINISTRY NEEDS A DINNER PROVIDED** this Wednesday, August 31. Jim Margard went out on a limb for us and said, "Sure!" The main course (a vegetable and chicken stew) and bread are accounted for, and Jim will be in Seattle to do any pick-ups if needed for any other dishes (dessert, salad). Please let Jim know if you are willing and able to provide one of those dishes.

**WE ARE SEEKING A CHILDREN'S MINISTRY COORDINATOR**  
*(Please spread the word!)*

Queen Anne Lutheran Church, Seattle, WA, is seeking an enthusiastic, grace-centered individual to lead our Sunday School program and assist in the Teen programming. The position requires coordinating with the Pastor and Sunday School Committee to identify and schedule an appropriate curriculum (preschool-sixth grade). The successful candidate will also work with the Worship and Music Committee as it seeks to involve children in the worship life of our church. The ideal candidate will have prior experience working with children and families in a ministry context, though experience in other areas may be applicable. Completion of college education in religion or education is desired, but not required. This is a part-time position (10-15 hours a week). Compensation will be based on prior experience and time commitment. To apply, please send cover letter and resume to [personnel@queenannelutheran.org](mailto:personnel@queenannelutheran.org) by September 9. Contact the same email with any questions you have about the position.

## REGISTER BY WEDNESDAY FOR OUR NW WA SYNOD WOMEN'S RETREAT

Join your sisters in Christ for the one-day retreat **Saturday, Oct. 1, 2022**

at Bethlehem Lutheran Church in Marysville. Registration forms are on the narthex table, or find the link in your Friday email. **Registrations are due September 1.**

The theme is "Woven Together in Love." We will explore how God's love weaves us together in our daily challenges, hope, and healing for our families, our communities, and our world.

### I DON'T SEW – HOW CAN I HELP WITH LWR PROJECTS?

**1** **Donations are still needed for our BABY LAYETTES.** Watch for **12- to 18-months sized jackets** for the Baby Layettes. That was the item most needed when items were last counted! Other items include **T-shirts, knit pants**, (Most useful sizes are 9-18 months), **layette gowns, socks, diapers/pins, and blankets.** Questions? Ask Jennifer Jones.



**2** **LWR SCHOOL SUPPLIES – Needed Donations**

Please go shopping during "back to school sales," to help us create School Kits for LWR and CORE Tanzania.



**Our goal is 75 School Kits. We'll assemble kits October 15. Each kit needs:**

- Five ballpoint pens – black or blue ink. No gel pens. You can buy larger sets – we'll repackage them in fives.
- Ruler – must be metric. Wood-with-a-metal edge; metal, or light-colored hard plastic
- Pencil Sharpener.
- Blunt Scissors
- Crayons – 24-pack
- 2.5" Eraser
- Four 70-page spiral notebooks – college or wide ruled.
- *No pencils are needed at this time.*

**And where to buy these items?** Some stores only put one or two items on sale, and not all stores in a chain have the same specials. Recent scouting found:

- **Pencil sharpeners:** 65 cents @Target; or, a two-hole, \$1 pencil sharpener @Fred Meyer (larger hole for crayons.).
- **Crayons:** 50 cents/box of 24 @Fred Meyer
- **Pens:** Papermate or Bic , 10 for 99 cents @Target. Buy black or blue ink only. Or buy 10 for \$1.00 for another brand @Fred Meyer.
- **2.5 " Erasers:** 3-pack for \$1.49 @Target. 3 for \$1 @Fred Meyer.
- **Rulers:** Please do not buy wood IF there's no metal edge. Plastic rulers (metric, too) are \$0.79 @Fred Meyer
- **Blunt scissors:** \$1.49 for two @Target; 50 cents for one @Fred Meyer
- **70-count notebooks:** 25 cents each



We now know that our “**GOD’S WORK, OUR HANDS**” project on **Saturday September 24** will be at Martha Washington Park, in coordination with Forterra, clearing invasive vegetation and planting bulbs and maybe other plants. Details will follow!

**OFFICE HOURS THIS WEEK**

**Main Office (Barb Bash)**

Tuesdays – Fridays, 9:00 AM – 5:30 PM

**Cantor Kyle Haugen:**

Wednesday, 1 to 5 PM; Thursday, 2 to 5 PM

**Pastor Dan Peterson:**

Tuesday, 1-3 PM, Saturday, 1-3 PM

**THIS WEEK’S CALENDAR**

**Sunday, August 28**

Worship 10:00 AM  
 Conversation w/ visiting scholars  
 (Fellowship Hall) *after worship*

**Monday**

FA Food Addicts in Recovery(FH) 7:00 PM  
 QA Book Club (Narthex) 7:00 PM

**Tuesday**

**Wednesday**

Sewing and Service (Fireside) 10:00 AM  
 New Horizons Dinner *contact Jim M.*  
 AA Counterbalance (FH) 8:00 PM

**Saturday**

Alanon Women (upstairs) 10:30 AM  
 AA Shanty Trudgers (upstairs) 7:00 PM

**Sunday, September 4**

Worship 10:00 AM

**SERVING NEXT SUNDAY, SEPT. 4:**

**Greeter/Communion:** Liz Major

**Lector/Intercessor /Communion:**

Meg Shaw

**Ushers:** Don Thomas, Denny Alfson

**Counters:** Bridget Boysen, Jacqui Darroch

**Audio:** Connie Wurm

Stop by the narthex table to sign up to help in worship.