



Queen Anne

LUTHERAN CHURCH

Called to Proclaim God's Love in Christ for Every Person

2400 Eighth Avenue West
Seattle, Washington 98119

Mailing Address: P.O. Box 17029 • Seattle, WA 98127
206.284.1960 • www.queenannelutheran.org

✧ *Staff* ✧

Pastor	Rev. Dr. Daniel Peterson
Cantor	Kyle Haugen
Parish Administrator	Barbara Bash
Sexton	John Bryant

✧ *Serving as leaders of worship today* ✧

Lector and Intercessor	Jacqui Darroch
Greeter and Communion Assistant	Liz Major

Welcome to Queen Anne Lutheran Church! We are delighted that we can share this time together. Whatever has led you here, consider yourself part of the community.

Please fill out a card from the pew rack if you are visiting us today, if you have a prayer request, if you wish to receive our newsletter, or if you wish the pastor to contact you. Simply place the card in the offering plate as you exit.

Silencing your cell phone is a good gift you can give to your fellow worshipers.

Children are always welcome in worship! There are “Quiet Bags” with books and soft toys, or “Doodle Bags” with paper and markers for children to use in the pews.

Child Care is available on the second floor, which can be accessed by the elevator or the two stairways. An usher can assist you. The narthex area is also available for you if your child needs a break from the service. Audio from worship can be heard there.

Hearing Assisted Radio Transmitters are available. Please ask an usher for assistance.

This service is being audio-recorded, and will be posted online for those who wish to listen at home.

THIRTEENTH SUNDAY AFTER PENTECOST

September 4, 2022

10:00 AM

↑ = *Stand* **C**: *Congregation* **A**: *Worship Assistant* **P**: *Presiding Minister*

Hymns may be found in the red hymnals in the pews.

Large-print hymns are available in the narthex as you enter.

Quiet Bags with books and soft toys, or Doodle Bags with markers
are also available in the narthex for children.

Prelude Free improvisation on themes from *Now the Feast and Celebration*

Introit

Ps. 119: 30, 27, 26

I have chosen the way of faithfulness; I set your judgments before me.
Make me understand the way of your commandments, that I may
meditate on your marvelous works. I have recounted my ways,
and you answered me; instruct me in your statutes.

Welcome

↑ **Gathering Hymn**

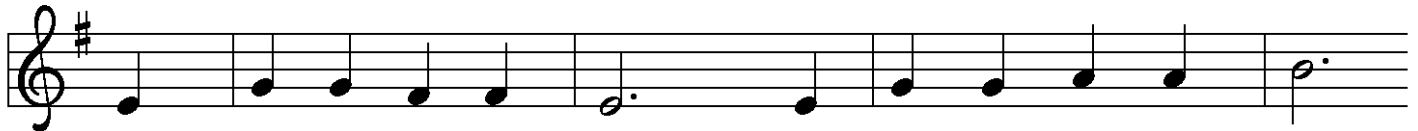
Lift High the Cross
ELW 660

↑ **Greeting**

P: The grace of our Lord Jesus Christ, the love of God,
and the communion of the Holy Spirit be with you all.

C: And also with you.

↑ **Kyrie**



1 Have mer - cy on us, Lord, and hear our sol - emn prayer.
2 Have mer - cy on us, Christ, and wash a - way our sin.
3 Have mer - cy on us, Lord; make sin and shame de - part.



We come to hear your liv - ing word; it saves us from de - spair.
Pour out your grace and make us whole that new life may be - gin.
Re - new us with your sav - ing pow'r; cre - ate in us new hearts!

Refrain

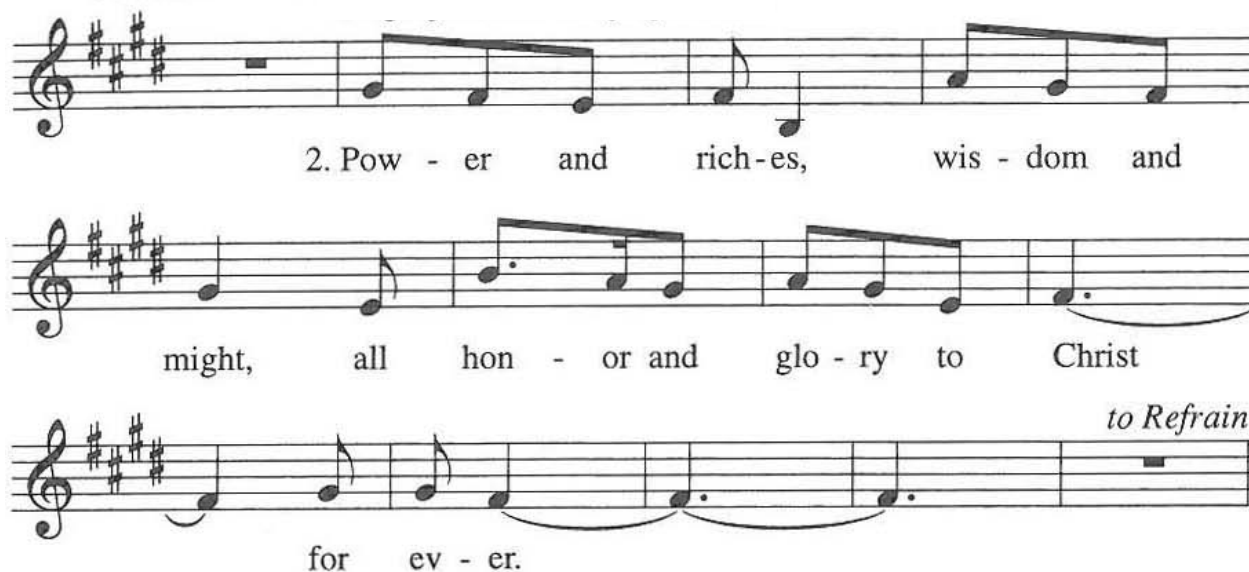
Congregation:

Now the feast and cel - e - bra - tion,
all of cre - a - tion sings for joy
to the God of life and love and
free - dom: praise and glo - ry for ev -
er - more!

Verse 1

1. Now is the feast of the Lamb once
slain, whose blood has freed and u -
nit-ed us to be one great peo - ple of
God. *to Refrain*

Verse 2



2. Pow - er and rich-es, wis - dom and
might, all hon - or and glo - ry to Christ
for ev - er. *to Refrain*

Verse 3



3. For God has come to dwell with us, to
make us peo - ple of God; to make
all things new. *to Refrain*

↑Prayer of the Day

P: The Lord be with you.

C: **And also with you.**

P: Let us pray.

Help us, Lord God, to “choose life” by loving you,
following your commandments,
and living for others as you lived for us
in and through Jesus Christ, our Savior and Lord.

C: **Amen.**

First Reading

Deuteronomy 30:15-20

A: Word of God, Word of life.

G: Thanks be to God.

Second Reading

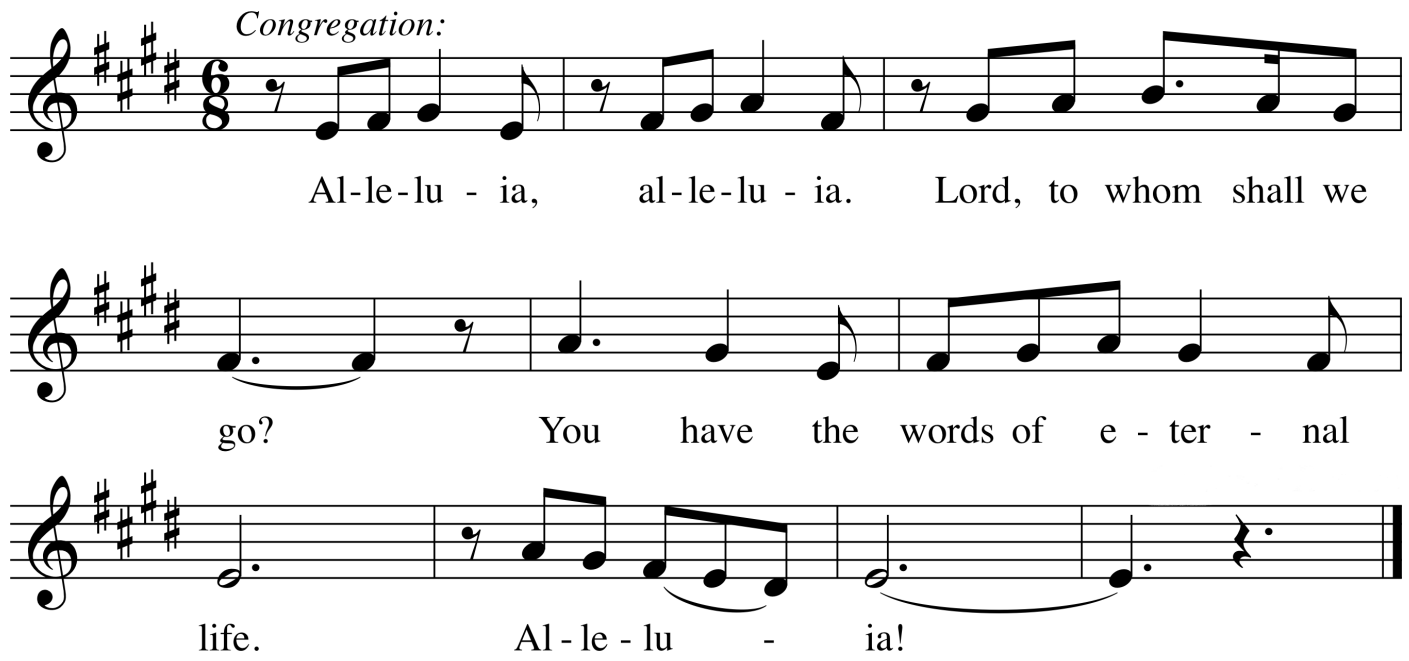
Philemon 1-21

A: Word of God, Word of life.

G: Thanks be to God.

↑ Gospel Acclamation

Congregation:



Al-le-lu - ia, al-le-lu - ia. Lord, to whom shall we
go? You have the words of e - ter - nal
life. Al - le - lu - ia!

↑ The Holy Gospel

Luke 14:25-33

P: The Gospel according to St. Luke, the fourteenth chapter.

G: Glory to you, O Lord.

Following the reading

P: The Gospel of the Lord.

G: Praise to you, O Christ.

Sermon

Five Facts About Philemon

Pastor Dan

↑ Hymn of the Day

Take Up Your Cross, the Savior Said

ELW, Hymn 667

↑ Apostles' Creed

☩: I believe in God, the Father almighty,
creator of heaven and earth.

I believe in Jesus Christ, God's only Son, our Lord,
who was conceived by the Holy Spirit,
born of the virgin Mary,
suffered under Pontius Pilate,
was crucified, died, and was buried;
he descended to the dead.

On the third day he rose again; he ascended into heaven,
he is seated at the right hand of the Father,
and he will come again to judge
the living and the dead.

I believe in the Holy Spirit,
the holy catholic church,
the communion of saints,
the forgiveness of sins,
the resurrection of the body,
and the life everlasting.
Amen.



Prayers of the Church

A: . . . Lord, in your mercy,
☩: hear our prayer.

Holy Communion – All baptized Christians who seek a taste of the new and forgiven life in Jesus Christ are welcome to receive the sacraments. We confess and believe that Christ in his risen form is truly present in the Sacrament of bread and wine and that by sharing in this meal, we share in Christ’s resurrection.

The ministration of the Sacrament is given in two ways:

In the pew:

You may commune in the pews with individual elements. These are available in the narthex as you enter.

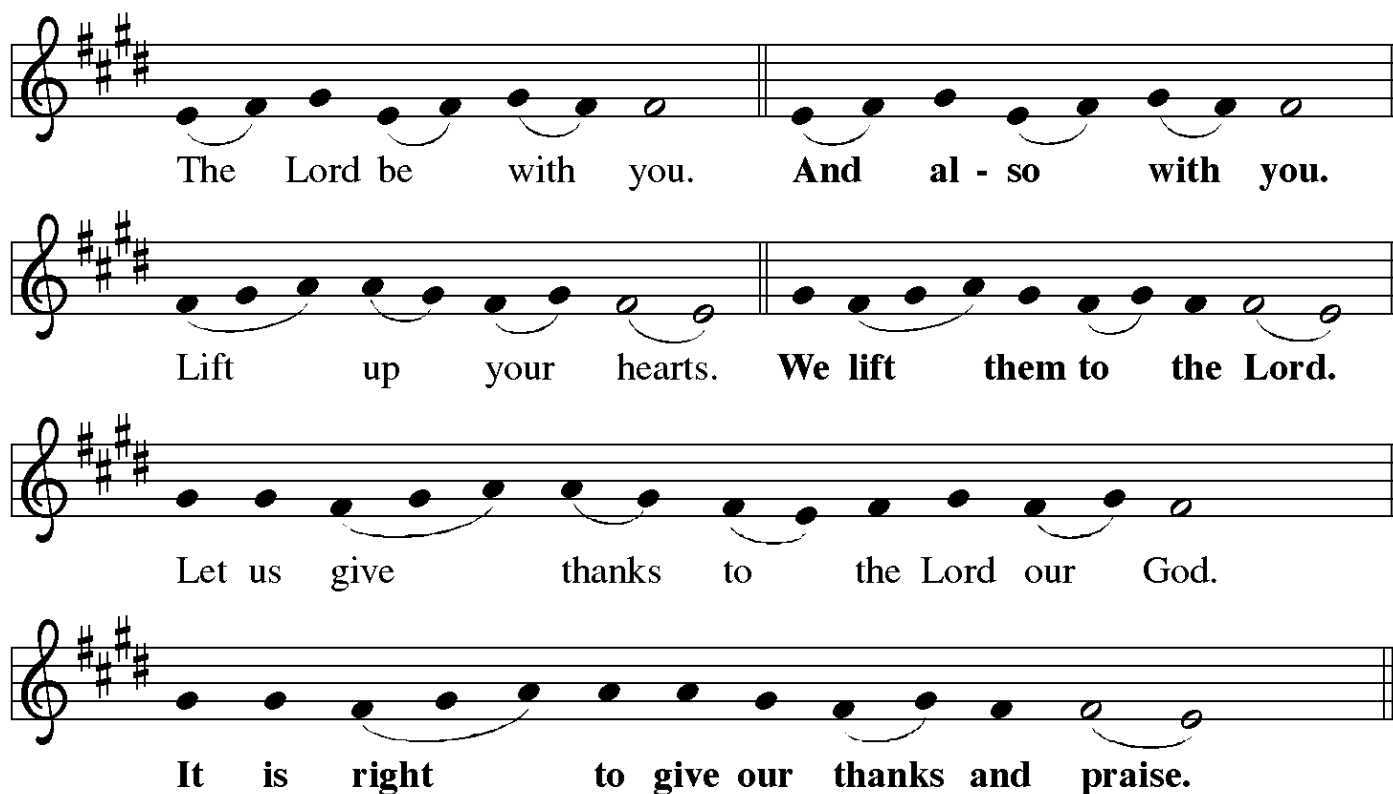
When invited to commune, peel off the bottom tab to eat the bread; peel off the top tab to drink the wine. The waste can go in the paper bag found in each pew.

By intinction:

Come down the center aisle; please sanitize your hands. Receive a wafer in your hands. Dip it in a chalice, either wine or grape juice, before partaking. Continue to your right and use the outside aisle to return to your seat.

If you prefer to receive only bread, be assured that you are receiving the full presence of God.

↑ **The Great Thanksgiving**



The Great Thanksgiving

The Lord be with you. And al - so with you.

Lift up your hearts. We lift them to the Lord.

Let us give thanks to the Lord our God.

It is right to give our thanks and praise.

P: It is indeed right, our duty and our joy . . .
 . . . praise your name and join their unending hymn:

↑ **Sanctus**

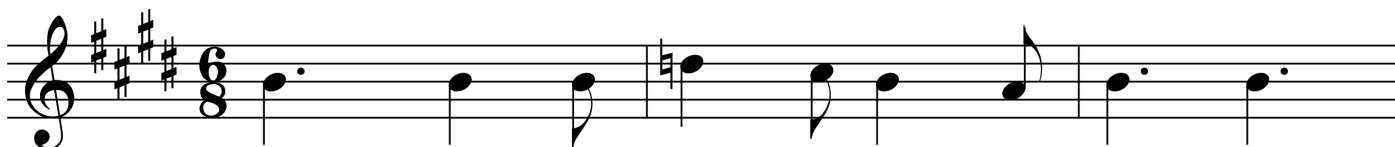
Congregation:



Ho - ly, ho - ly, ho - ly are you, God of light and



life; Heav - en and earth are filled with your



glo - ry. Ho - san - na in the high - est!



Bless - ed is the One who comes in your name. Ho -



san - na in the high - est, ho - san - na in the high - est!

↑ **Words of Institution**

↑ Lord's Prayer

P: Lord, inspire us to work toward your kingdom and teach us to pray:

C: **Our Father in heaven, hallowed be your name,
your kingdom come, your will be done, on earth as in heaven.
Give us today our daily bread
and forgive us our sins as we forgive those who sin against us.
Save us from the time of trial and deliver us from evil.
For the kingdom, the power, and the glory are yours,
now and forever. Amen.**

↑ Invitation to the Table

P: Christ is among us.
Receive the bread of life.

Agnus Dei



Lamb of God, you take a - way the sin of the
you break the chains of ha - tred and
you are the way of jus - tice and
you are the way of mer - cy and



world: have mer - cy on us, mer - cy on us,
fear:
peace:
love.

Final Stanza



mer-cy on us. Lamb of God, you



take a - way the sins of the world: grant us peace,



grant us peace, grant us peace.

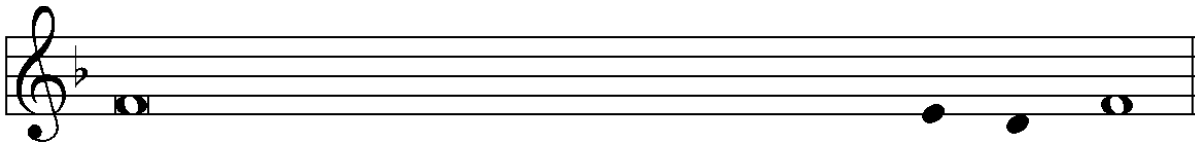
Post Communion Prayer

- P**: Life-giving God,
through this meal you have bandaged our wounds
and fed us with your mercy.
Now send us forth to live for others, both friend and stranger,
that all may come to know your love.
This we pray in the name of Jesus.
- G**: Amen.

Godspeed for Lisa Chille

Announcements

↑ Benediction



- P**: The Lord bless you and keep you.
The Lord make his face to shine on you
and be gracious to you.
The Lord look upon you with favor and ✠ grant you peace.



- G**: A - men.

↑ Sending Hymn

Praise and Thanks and Adoration
ELW 783

↑ Dismissal

- A**: Go in peace. Serve the Lord.
G: Thanks be to God.

Postlude

Prelude in F Major
Franz Tunder (1614–1667)

Please note that the postlude may feature the full organ.

Please maintain social distancing as we exit. On your way out, put your bulletin back in the baskets on the table if you do not want to take it with you. Offerings may be put in the offering plate as you exit. You may remain in fellowship with one another as long as you like.

About Today's Music:

One of the musical settings of the liturgy that QALC has sung over the years is *Now the Feast and Celebration* by Marty Haugen (no relation to Cantor Kyle), which was originally commissioned by the Campus Ministry Department of Pacific Lutheran University. We haven't sung this music at QALC since before the pandemic (summer 2019). To give a preview of the liturgy, this morning's prelude incorporates musical themes that we'll sing during the service. Whatever your familiarity with this music for the liturgy may be, Marty Haugen is an expert tunesmith, and soon we will all be able to sing these melodies together with gusto!

– Cantor Kyle

ANNOUNCEMENTS — SEPTEMBER 4

WELCOME! Please fill out a CONNECT card if you are visiting us today, if you wish to receive our emails or newsletter, or if you wish the pastor to contact you. PRAY cards may be used for prayer requests. Place cards in the offering plate as you leave.

CHILDCARE: Our upstairs nursery is staffed and available. Van Keo and Christian Louie are our anchors upstairs for the summer.

ALTAR FLOWERS were provided by Jean and Marc Oplinger to the glory of God and in honor of their 28th wedding anniversary on this very day. They are grateful for the community of love and support at Queen Anne Lutheran Church.

WELCOME SUNDAY IS SEPTEMBER 18!

Our worship opportunities expand to 8:00 AM & 10:30 AM as we return to our “fall to spring” schedule. Come worship with us, and plan to be here between the services, from 9:30 to 10:30, as well! Some highlights of the day:

NARTHEX MINISTRY FAIR: Browse the tables to find out more about

- God’s Work Our Hands
- Our Forum Catalog, Bible Study and other educational offerings from the Synod
- Social Action events incl. New Horizons, Community Lunch on Capitol Hill
- Lutheran World Relief
- Reconciling in Christ
- Environmental Stewardship
- Women’s and Men’s Ministries
- Altar Guild

BRAVE THE NAVE from 9:30 AM to 10:15 AM to jump into a “pick up” choir. **Everyone 12 and up is welcome to come sing!** We will learn a simple song together and sing it at our 10:30 service.

REGISTER FOR OUR NW WA SYNOD WOMEN’S RETREAT – Registration deadline has been extended to September 9.

Join your sisters in Christ for the one-day retreat **Saturday, Oct. 1, 2022** at Bethlehem Lutheran Church in Marysville. The theme is “Woven Together in Love,” exploring how God’s love weaves us together in our daily challenges, hope, and healing for our families, our communities, and our world.

Registration forms are on the narthex table by the fireplace, or find the link in your Friday email. Late registrations will be accepted until September 16 at a cost of \$40 (rather than \$30). Lunch is included.

God's Work, Our Hands – SATURDAY, SEPTEMBER 24:

This annual day of service for ELCA congregations takes many forms. This month, we will serve together on Saturday, September 24.

For some hands-on service, come **help restore Martha Washington Park** by pulling invasive weeds and planting bulbs. See details below.

On the same day, Pastor Dan would love to have a group of members **attend a workshop on "Sacred Spaces."** Exploring different ways/places/times to gather in faith, this Synod workshop may have some relevancy to the development and use of our Triangle space, and in thinking in general about new ways to connect with the community around us. Please consider attending; then, bring your ideas back to church! See details below.

GREEN SPACE RESTORATION

Due to the late summer, our tree-planting project has morphed into a bulb-planting and invasive removal project.

It will still take place **on Saturday, Sept. 24, at Martha Washington Park** (6612 57th Ave. S., Seattle, south of Seward Park). **Please sign up at the narthex railing!** For those wishing to carpool, we will meet at the church at 8:30

AM. If you prefer to meet at the park, meet us there at 9:00 AM. Tools and gloves

will be provided. Questions? Contact Lisa Kjaer-Schade.



SACRED SPACES:

Opening the Holy Invitation Even Wider

September 24, 9:30 AM-2:30 AM

**at St. Andrews Lutheran Church
(2650 148th Ave SE, Bellevue)**

Join Facilitators and Practitioners of unique gatherings and organic forms of church, for a day of stories, experiences, and workshops to explore together how we can open God's holy invitation even wider.

There are so many ways to gather as faithful communities, whether it's outdoors, creating art, at the pub, or just eating around one big table. Why shouldn't our gatherings reflect our uniqueness?

Let's imagine how we can foster organic sacred spaces right in our own backyards. How can we create more inclusive gatherings for people to encounter God? How can we experiment with the gifts we have to meet the needs of those seeking the spirit in our own neighborhoods? What is sprouting up within you that is ready for germination? Come with ideas, come with questions, come to dream about what sacred spaces can be!

Please let Pastor Dan or the church office know if you'd like to attend; we'll get you registered.

WE ARE SEEKING A CHILDREN'S MINISTRY COORDINATOR

(Please spread the word!)

Queen Anne Lutheran Church, Seattle, WA, is seeking an enthusiastic, grace-centered individual to lead our Sunday School program and assist in the Teen programming. The position requires coordinating with the Pastor and Sunday School Committee to identify and schedule an appropriate curriculum (preschool-sixth grade). The successful candidate will also work with the Worship and Music Committee as it seeks to involve children in the worship life of our church. The ideal candidate will have prior experience working with children and families in a ministry context, though experience in other areas may be applicable. Completion of college education in religion or education is desired, but not required. This is a part-time position (10-15 hours a week). Compensation will be based on prior experience and time commitment. To apply, please send cover letter and resume to personnel@queenannelutheran.org by September 9. Contact the same email with any questions you have about the position.

THE TRIANGLE PROJECT is underway! A survey team has been selected, and you may see their flags and markings in the triangle and front lawn area soon. Kim Rooney Landscape Architecture has been hired to come up with some design ideas, and once those are completed, we will invite the church community to provide thoughts and feedback. Thank you to the early contributors who have helped get this project off the ground, and everyone who provided input re the vision board. Kim plans to help us bring those ideas to fruition, to make the space inviting and welcoming (to humans and the natural world), and to help make our church more accessible to the community. Stay tuned to see her drawings in the coming months.

THE SEPTEMBER QUILL IS OUT!

Please pick up a copy in the narthex, or find it online on our website.

SERVING NEXT SUNDAY, SEPT. 11:

Greeter/Communion: Rich Mathes

Lector/Intercessor /Communion:

Joan Kavanaugh

Ushers: *Needed*

Counters: Joel Matter, Rich Mathes

Audio: *Needed*

We have many openings in the weeks ahead; stop by the narthex table to sign up to help.

I DON'T SEW – HOW CAN I HELP WITH LWR PROJECTS?

1 **Donations are still needed for our BABY LAYETTES.** Watch for **12- to 18-months sized jackets** for the Baby Layettes. That was the item most needed when items were last counted! Other items include **T-shirts, knit pants**, (most useful sizes are 9 to 18 months), **layette gowns, socks, diapers/pins, and blankets**. Questions? Ask Jennifer Jones.



2 **LWR SCHOOL SUPPLIES – Needed Donations**
Please go shopping during “back to school sales” to help us create School Kits for LWR and CORE Tanzania.



Our goal is 75 School Kits. We'll assemble kits October 15. Each kit needs:

- Five ballpoint pens – black or blue ink.
No gel pens. You can buy larger sets – we'll re-package them in fives
- Ruler – must be metric. Wood-with-a-metal edge; metal, or light-colored hard plastic
- Pencil Sharpener
- Blunt Scissors
- Crayons – 24-pack
- 2.5" Eraser
- Four 70-page spiral notebooks – college or wide ruled
- *No pencils are needed at this time*

STAFF ABSENCE; OFFICE HOURS THIS WEEK

Staff will take Tuesday off to mark Labor Day. Barb will also be gone on Friday due to a death in her family. **The office will be closed Tuesday and Friday.**

Although staff may also be present *outside* of the hours listed below, here are “office hours” when these staff members can be reliably found this week:

Main Office (Barb Bash)

Wednesday – Thursday, 9:00 AM – 5:30 PM

Cantor Kyle Haugen:

Wednesday, 1 to 5 PM; Thursday, 2 to 5 PM

Pastor Dan Peterson:

Saturday, 1-3 PM

IN OUR PRAYERS THIS WEEK:

Email new prayer requests to pastor@queenannelutheran.org,

Text/call Pastor Dan at 253-230-9695, or leave a PRAY card.

Kirsti Melby

Family of Elaine Rodning, mother of Barb Bash's sister-in-law, upon her death

Family of Michel Mottner, Heidi Steiner's brother, upon his death

Kyle's brother-in-law, Dick T.

Lisa Kjaer's mother, Eunice, hospitalized after a fall

Family of Annie Roggasch, Susan Evans' friend, upon her death

The Vega family – Consuelo's uncle Louie is in hospice care from a sudden illness

Candy Mathes's sister-in-law Elena & family – may they know God is with them as they deal with Elena's cancer

John Reese's sister-in-law Marcia

Unseth family

Jessica and her parents, for healing & support

For John Reese's friend, upon the sudden death of his friend's adult son

Kristine, Joan Kavanaugh's cousin

David Erickson, Karen McCullough's brother, with multiple myeloma

John Reese's son-in-law, Jim Garrison

Almaz's mother, Awetash and brother, Mulugeta

Jan Olson, in memory of Linda

Richard McNeese

Ben Matter

Jean McLauchlan

Barb Gayotin

Hilde Glore

Carol S.

Lee Mathis

Denny Alfson

Mary Gallagher

Ruth Ghormley

THIS WEEK'S CALENDAR

Sunday, September 4

Worship 10:00 AM

Monday

Food Addicts in Recovery (FH) 7:00 PM

Tuesday (office closed)

Executive Committee (Zoom) 7:00 PM

Wednesday

Sewing and Service (Fireside) 10:00 AM

AA Counterbalance (FH) 8:00 PM

Thursday

Worship & Music Com. (Conf.) 5:30 PM

Friday (office closed)

Saturday

Alanon Women (upstairs) 10:30 AM

AA Shanty Trudgers (upstairs) 7:00 PM

Sunday, September 11

Worship 10:00 AM