



Queen Anne

LUTHERAN CHURCH

Called to Proclaim God's Love in Christ for Every Person

2400 Eighth Avenue West
Seattle, Washington 98119

Mailing Address: P.O. Box 17029 • Seattle, WA 98127

206.284.1960 • www.queenannelutheran.org

✧ *Staff* ✧

Pastor	Rev. Dr. Daniel Peterson
Cantor	Kyle Haugen
Parish Administrator	Barbara Bash
Sexton	John Bryant

✧ *Serving as leaders of worship today* ✧

Lector and Intercessor	Joan Kavanaugh
Greeter and Communion Assistant	Rich Mathes

Welcome to Queen Anne Lutheran Church! We are delighted that we can share this time together. Whatever has led you here, consider yourself part of the community.

Please fill out a card from the pew rack if you are visiting us today, if you have a prayer request, if you wish to receive our newsletter, or if you wish the pastor to contact you. Simply place the card in the offering plate as you exit.

Silencing your cell phone is a good gift you can give to your fellow worshipers.

Children are always welcome in worship! There are "Quiet Bags" with books and soft toys, or "Doodle Bags" with paper and markers for children to use in the pews.

Child Care is available on the second floor, which can be accessed by the elevator or the two stairways. An usher can assist you. The narthex area is also available for you if your child needs a break from the service. Audio from worship can be heard there.

Hearing Assisted Radio Transmitters are available. Please ask an usher for assistance.

This service is being audio-recorded, and will be posted online for those who wish to listen at home.

FOURTEENTH SUNDAY AFTER PENTECOST

September 11, 2022

10:00 AM

↑ = *Stand* **C**: *Congregation* **A**: *Worship Assistant* **P**: *Presiding Minister*

Hymns may be found in the red hymnals in the pews. • Large-print hymns are available in the narthex as you enter. • Quiet Bags with books and soft toys, or Doodle Bags with markers are available in the narthex for children.

Prelude

Two recent piano settings of EARTH AND ALL STARS

Valerie A. Floeter

Sally Drennan Mossing

Introit

Ps. 30:1, 11a, 5b

I will exalt you, O LORD, because you have lifted me up and have not let my enemies triumph over me. You have turned my wailing into dancing; weeping spends the night, but joy comes in the morning.

Welcome

↑ Gathering Hymn

(see inside back cover of this bulletin)

God's Work, Our Hands

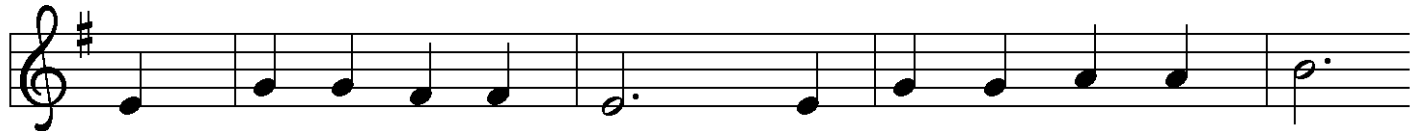
ACS 1000

↑ Greeting

P: The grace of our Lord Jesus Christ, the love of God, and the communion of the Holy Spirit be with you all.

C: **And also with you.**

↑ Kyrie



1 Have mer - cy on us, Lord, and hear our sol - emn prayer.
2 Have mer - cy on us, Christ, and wash a - way our sin.
3 Have mer - cy on us, Lord; make sin and shame de - part.



We come to hear your liv - ing word; it saves us from de - spair.
Pour out your grace and make us whole that new life may be - gin.
Re - new us with your sav - ing pow'r; cre - ate in us new hearts!

Refrain

Congregation:

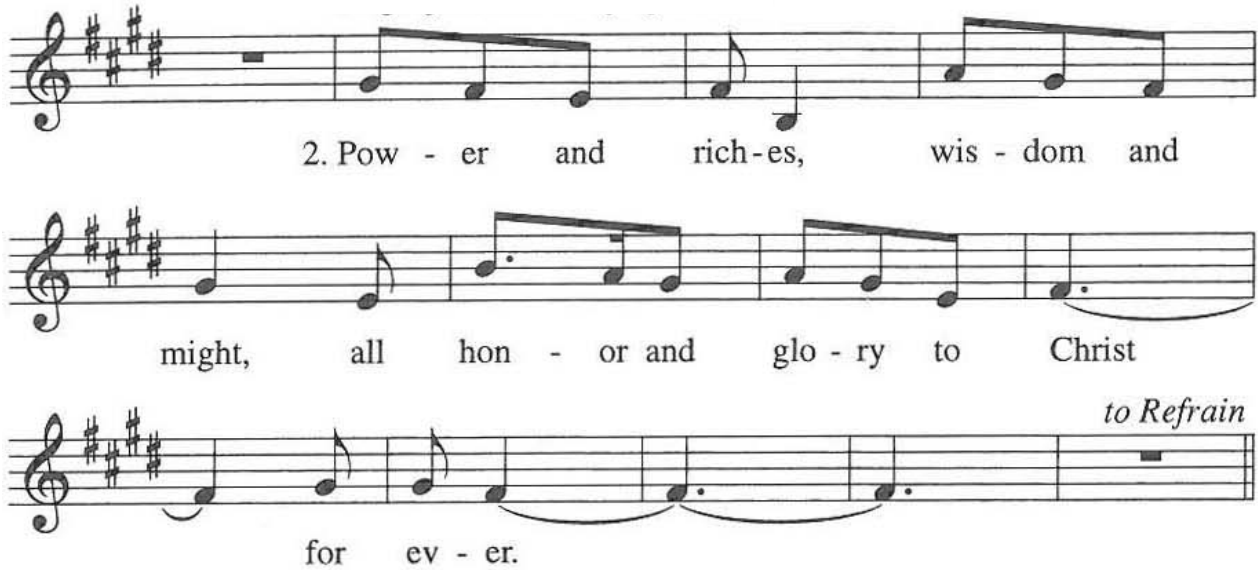
Now the feast and cel - e - bra - tion,
all of cre - a - tion sings for joy
to the God of life and love and
free - dom: praise and glo - ry for ev -
er - more!

Verse 1

1. Now is the feast of the Lamb once
slain, whose blood has freed and u -
nit-ed us to be one great peo - ple of
God.

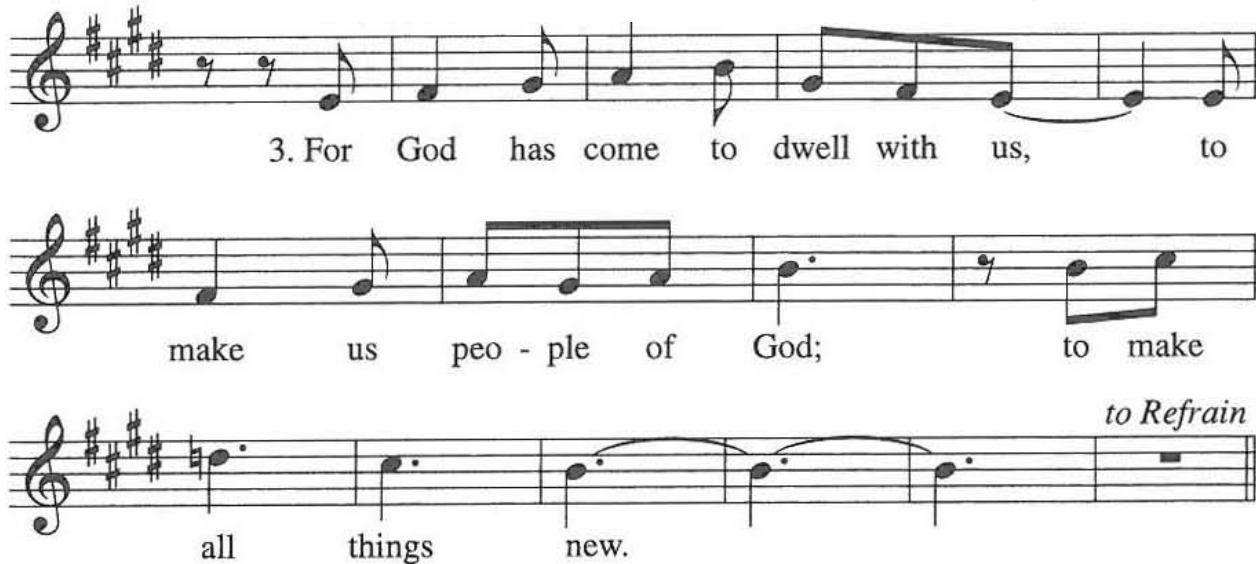
to Refrain

Verse 2



2. Pow - er and rich - es, wis - dom and
might, all hon - or and glo - ry to Christ
for ev - er. *to Refrain*

Verse 3



3. For God has come to dwell with us, to
make us peo - ple of God; to make
all things new. *to Refrain*

↑Prayer of the Day

P: The Lord be with you.

C: **And also with you.**

P: Let us pray.

O God, overflowing with mercy and compassion,
you lead back to yourself all those who wander away.
Preserve us in your loving care,
that we may reject whatever is contrary to your love
and follow all things that sustain our life
through your Son, Jesus Christ, our healer and companion.

C: **Amen.**

First Reading

Exodus 32:7-14

A: Word of God, Word of life.

G: Thanks be to God.

Second Reading

1 Timothy 1:12-17

A: Word of God, Word of life.

G: Thanks be to God.

↑ Gospel Acclamation

Congregation:

Al-le-lu - ia, al-le-lu - ia. Lord, to whom shall we
go? You have the words of e - ter - nal
life. Al - le - lu - ia!

↑ The Holy Gospel

Luke 15:1-10

P: The Gospel according to St. Luke, the fifteenth chapter.

G: Glory to you, O Lord.

Following the reading

P: The Gospel of the Lord.

G: Praise to you, O Christ.

Sermon

Pastor Dan

↑ Hymn of the Day

Amazing Grace, How Sweet the Sound
ELW, Hymn 779

↑ Apostles' Creed

☩: I believe in God, the Father almighty,
creator of heaven and earth.

I believe in Jesus Christ, God's only Son, our Lord,
who was conceived by the Holy Spirit,
born of the virgin Mary,
suffered under Pontius Pilate,
was crucified, died, and was buried;
he descended to the dead.

On the third day he rose again; he ascended into heaven,
he is seated at the right hand of the Father,
and he will come again to judge
the living and the dead.

I believe in the Holy Spirit,
the holy catholic church,
the communion of saints,
the forgiveness of sins,
the resurrection of the body,
and the life everlasting.
Amen.



Prayers of the Church

A: . . . Lord, in your mercy,
☩: hear our prayer.

Holy Communion – All baptized Christians who seek a taste of the new and forgiven life in Jesus Christ are welcome to receive the sacrament. We confess and believe that Christ in his risen form is truly present in the Sacrament of Bread and Wine and that by sharing in this meal, we share in Christ’s risen presence among us.

The ministration of the Sacrament is given in two ways:

In the pew:

You may commune in the pews with individual elements. These are available in the narthex as you enter.

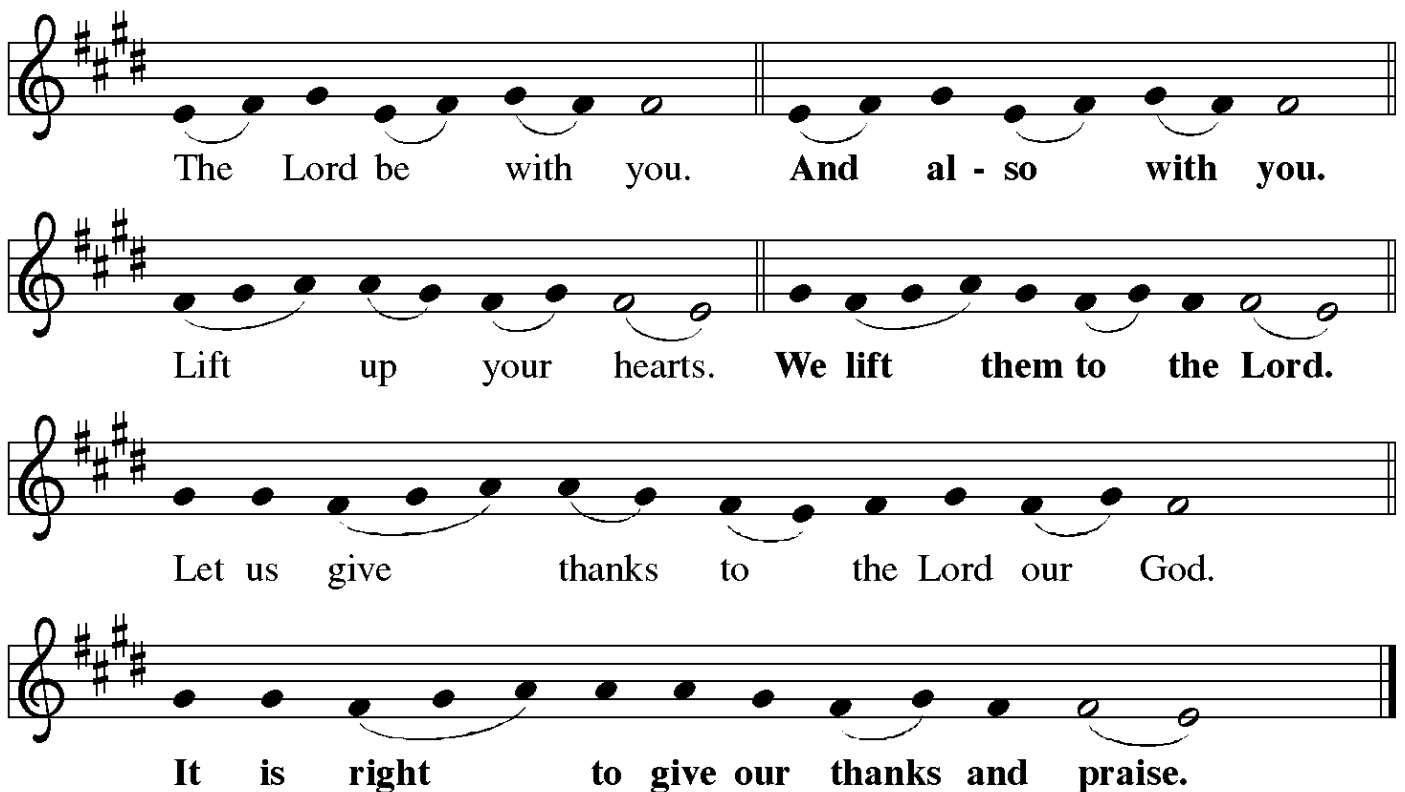
When invited to commune, peel off the bottom tab to eat the bread; peel off the top tab to drink the wine. The waste can go in the paper bag found in each pew.

By intinction:

Come down the center aisle; please sanitize your hands. Receive a wafer in your hands. Dip it in a chalice, either wine or grape juice, before partaking. Continue to your right and use the outside aisle to return to your seat.

If you prefer to receive only bread, be assured that you are receiving the full presence of God.

↑ **The Great Thanksgiving**



The Great Thanksgiving

The Lord be with you. And al - so with you.

Lift up your hearts. We lift them to the Lord.

Let us give thanks to the Lord our God.

It is right to give our thanks and praise.

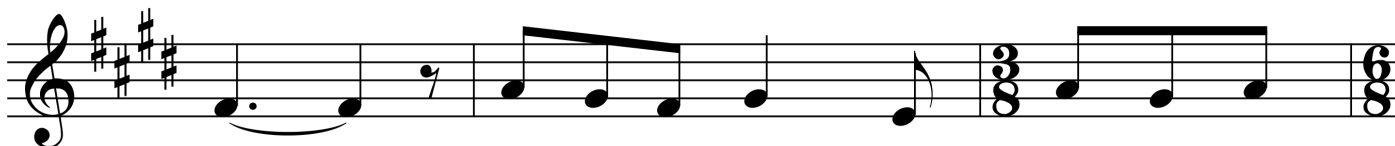
P: It is indeed right, our duty and our joy . . .
 . . . praise your name and join their unending hymn:

↑ **Sanctus**

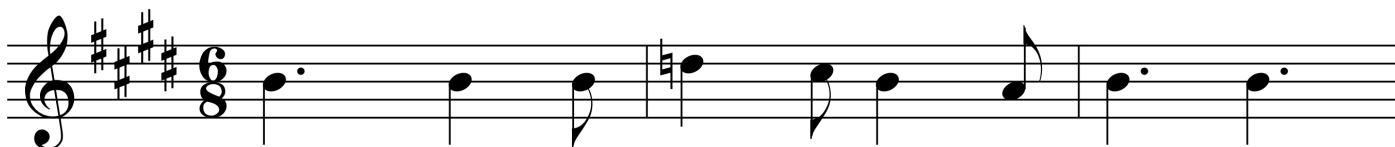
Congregation:



Ho - ly, ho - ly, ho - ly are you, God of love and



life; Heav - en and earth are filled with your



glo - ry. Ho - san - na in the high - est!



Bless - ed is the One who comes in your name. Ho -



san - na in the high - est, ho - san - na in the high - est!

↑ **Words of Institution**

↑ Lord's Prayer

P: Lord, inspire us to work toward your kingdom and teach us to pray:

C: **Our Father in heaven, hallowed be your name,
your kingdom come, your will be done, on earth as in heaven.
Give us today our daily bread
and forgive us our sins as we forgive those who sin against us.
Save us from the time of trial and deliver us from evil.
For the kingdom, the power, and the glory are yours,
now and forever. Amen.**

↑ Invitation to the Table

P: Christ is among us.
Receive the bread of life.

Agnus Dei



Lamb of God, you take a - way the sin of the
you break the chains of ha - tred and
you are the way of jus - tice and
you are the way of mer - cy and



world: have mer - cy on us, mer - cy on us,
fear:
peace:
love.

Final Stanza



mer-cy on us. Lamb of God, you



take a - way the sins of the world: grant us peace,



grant us peace, grant us peace.

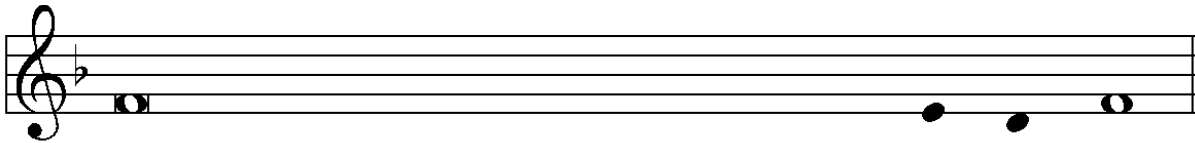
Post Communion Prayer

P: Life-giving God,
through this meal you have bandaged our wounds
and fed us with your mercy.
Now send us forth to live for others, both friend and stranger,
that all may come to know your love.
This we pray in the name of Jesus.

G: Amen.

Announcements

↑ Benediction



P: The Lord bless you and keep you.
The Lord make his face to shine on you
and be gracious to you.
The Lord look upon you with favor and ✝ grant you peace.



G: A - men.

↑ Sending Hymn

The Church of Christ, in Every Age
ELW 729

↑ Dismissal

A: Go in peace. Serve the Lord.
G: Thanks be to God.

Postlude

Jubilate

Olufela Obafunmilayo “Fela” Sowande (1905–1987)

Please note that the postlude may feature the full organ.

Please maintain social distancing as we exit. On your way out, put your bulletin back in the baskets on the table if you do not want to take it with you. Offerings may be put in the offering plate as you exit. You may remain in fellowship with one another as long as you like.

About Today’s Music:

Since this hymn tune first appeared in the 1960s, the sphere of EARTH AND ALL STARS has widened to publication in more than fifty hymnals and use with three notable texts. The tune EARTH AND ALL STARS was composed for the ninetieth anniversary of St. Olaf College in 1964 by David N. Johnson (1922–1987), along with the text for which it is named (ELW 731), which is by Herbert F. Brokering (1926–2009). For the *With One Voice* hymnal supplement (1995), Brokering was asked to write a second text specifically for this tune, “Alleluia! Jesus Is Risen! (ELW 377). Both hymns appear in a number of denominational hymnals, especially the hymnals used by American Lutherans. In recent years, hymnwriter and composer Wayne Wold (b. 1954) wrote a new text to celebrate the ELCA’s eponymous annual special day of service (and churchwide tagline). Although Wold also composed a tune for his text, EARTH AND ALL STARS is the preferred complement (and likely was planned in advance). The pairing of Wold’s text with this tune was published in the *All Creation Sings* hymnal supplement (2020), a year or two after it was first released by the ELCA as a standalone hymn especially suitable for use the Sunday after Labor Day, when the ELCA celebrates acts of service in Christ’s name.

– Cantor Kyle

ANNOUNCEMENTS — SEPTEMBER 11

WELCOME! Please fill out a CONNECT card if you are visiting us today, if you wish to receive our emails or newsletter, or if you wish the pastor to contact you. PRAY cards may be used for prayer requests. Place cards in the offering plate as you leave.

CHILDCARE: Our upstairs nursery is staffed and available.

ALTAR FLOWERS today are placed to the glory of God and in thanksgiving for 55 years of marriage by Ken and Ellen Hockman.

WELCOME SUNDAY IS NEXT WEEK!

Our worship opportunities expand to 8:00 AM & 10:30 AM on September 18 as we return to our “fall to spring” schedule. Come worship with us, and plan to be here between the services from 9:30 to 10:30 as well! Some highlights of the day:

NARTHEX MINISTRY FAIR: Browse the tables to find out more about

- God’s Work Our Hands
- Our Forum Catalog, Bible Study and other educational offerings from the Synod
- Social Action events incl. New Horizons, Community Lunch on Capitol Hill
- Lutheran World Relief
- Reconciling in Christ
- Environmental Stewardship
- Women’s and Men’s Ministries
- Altar Guild



BRAVE THE NAVE from 9:30 AM to 10:15 AM to jump into a “pick up” choir. **Everyone 12 and up is welcome to come sing!** We will learn a simple song together and sing it at our 10:30 service.

COFFEE HOUR and/or **AFTERWORD:** Enjoy fellowship over coffee after worship; grab some sustenance and come to the Conference Room, to discuss the sermon with Pastor Dan!

LAST CHANCE TO REGISTER FOR OUR NW WA SYNOD WOMEN’S RETREAT Late registrations accepted through September 16.

Join your sisters in Christ for the one-day retreat **Saturday, Oct. 1, 2022** at Bethlehem Lutheran Church in Marysville. The theme is “Woven Together in Love.”

Registration forms are on the narthex table by the fireplace, or find the link in your Friday email. Late registrations will be accepted until September 16 at a cost of \$40. Lunch is included.

SIGN UP! God's Work, Our Hands – SATURDAY, SEPTEMBER 24:

This annual day of service for ELCA congregations takes many forms. This month, we will serve together on Saturday, September 24.

For some hands-on service, come **help restore Martha Washington Park** by pulling invasive weeds and planting bulbs. See details below.

On the same day, Pastor Dan would love to have a group of members **attend a workshop on "Sacred Spaces."** Exploring different ways/places/times to gather in faith, this Synod workshop may have some relevancy to the development and use of our Triangle space, and in thinking in general about new ways to connect with the community around us. Please consider attending; then, bring your ideas back to church! See details below.

GREEN SPACE RESTORATION

Due to the late summer, our tree-planting project has morphed into a bulb-planting and invasive removal project. It will still take place (*see above*) **on Saturday, Sept. 24, at Martha Washington Park** (6612 57th Ave. S., Seattle, south of Seward Park). **Please sign up at the narthex railing!** For those wishing to carpool, we will meet at the church at 8:30 AM. If you prefer to meet at the park, meet us there at 9:00 AM. Tools and gloves will be provided. Questions? Contact Lisa Kjaer-Schade.



SACRED SPACES:

Opening the Holy Invitation Even Wider

September 24, 9:30 AM-2:30 AM

**at St. Andrews Lutheran Church
(2650 148th Ave SE, Bellevue)**

Join Facilitators and Practitioners of unique gatherings and organic forms of church, for a day of stories, experiences, and workshops to explore together how we can open God's holy invitation even wider.

There are so many ways to gather as faithful communities, whether it's outdoors, creating art, at the pub, or just eating around one big table. Why shouldn't our gatherings reflect our uniqueness?

Let's imagine how we can foster organic sacred spaces right in our own backyards. How can we create more inclusive gatherings for people to encounter God? How can we experiment with the gifts we have to meet the needs of those seeking the spirit in our own neighborhoods? What is sprouting up within you that is ready for germination? Come with ideas, come with questions, come to dream about what sacred spaces can be!

Please let Pastor Dan or the church office know if you'd like to attend; we'll get you registered.

WE ARE SEEKING A CHILDREN'S MINISTRY COORDINATOR

(Please spread the word!) Queen Anne Lutheran Church, Seattle, WA, is seeking an enthusiastic, grace-centered individual to lead our Sunday School program and assist in the Teen programming. The position requires coordinating with the Pastor and Sunday School Committee to identify and schedule an appropriate curriculum (preschool-sixth grade). The successful candidate will also work with the Worship and Music Committee as it seeks to involve children in the worship life of our church. The ideal candidate will have prior experience working with children and families in a ministry context, though experience in other areas may be applicable. Completion of college education in religion or education is desired, but not required.

This is a part-time position (10-15 hours a week). Compensation will be based on prior experience and time commitment. To apply, please send cover letter and resume by October 28, 2022 to personnel@queenannelutheran.org. Contact the same email with any questions you have about the position.

THE TRIANGLE PROJECT is underway! A survey team has been selected, and you may see their flags and markings in the triangle and front lawn area soon. Kim Rooney Landscape Architecture has been hired to come up with some design ideas, and once those are completed, we will invite the church community to provide thoughts and feedback. Thank you to the early contributors who have helped get this project off the ground, and everyone who provided input re the vision board. Kim plans to help us bring those ideas to fruition, to make the space inviting and welcoming (to humans and the natural world), and to help make our church more accessible to the community. Stay tuned to see her drawings in the coming months.

THIS WEEK'S CALENDAR

Sunday, September 11

Worship 10:00 AM

Monday

PDQ Quilters (downstairs) 5:30 PM

Food Addicts in Recovery (FH) 7:00 PM

Tuesday

Church Council (Zoom) 7:00 PM

Wednesday

Sewing and Service (Fireside) 10:00 AM

AA Counterbalance (FH) 8:00 PM

Thursday

Choir Rehearsal (Music Room) 7:00 PM

Friday

Saturday

Alanon Women (upstairs) 10:30 AM

AA Shanty Trudgers (upstairs) 7:00 PM

Sunday, September 18

Welcome Sunday!

Worship 8:00 AM

Ministry Fair (narthex) *between services*

Pickup choir (nave) 9:30 AM

Worship 10:30 AM

Coffee Hour (narthex) *after worship*

AfterWord (Conf. Rm.) *after worship*

THE SEPTEMBER *QUILL* IS OUT!

Please pick up a copy in the narthex, or find it online on our website.

I DON'T SEW – HOW CAN I HELP WITH LWR PROJECTS?

1 **Donations are still needed for our BABY LAYETTES.** Watch for **12- to 18-months sized jackets** for the Baby Layettes. That was the item most needed when items were last counted! Other items include T-shirts, knit pants, (most useful sizes are 9 to 18 months), layette gowns, socks, diapers/pins, and blankets. Questions? Ask Jennifer Jones.



2 **LWR SCHOOL SUPPLIES – Needed Donations** Please go shopping during “back to school sales” to help us create School Kits for LWR and CORE Tanzania.



Our goal is 75 School Kits. We'll assemble kits October 15. Each kit needs:

- Five ballpoint pens – black or blue ink. No gel pens. You can buy larger sets – we'll re-package them in fives
- Ruler – must be metric. Wood-with-a-metal edge; metal, or light-colored hard plastic
- Pencil Sharpener
- Blunt Scissors
- Crayons – 24-pack
- 2.5" Eraser
- Four 70-page spiral notebooks – college or wide ruled
- *No pencils are needed at this time*

OFFICE HOURS THIS WEEK

Although staff may also be present *outside* of the hours listed below, here are “office hours” when these staff members can be reliably found this week:

Main Office (Barb Bash)

Tuesday–Friday, 9:00 AM – 5:30 PM

Cantor Kyle Haugen:

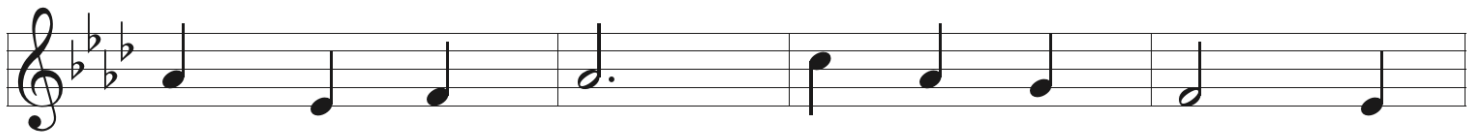
Wednesday, 1 to 5 PM; Thursday, 3 to 5 PM (*note change for this week*)

Pastor Dan Peterson:

Tuesday, 1–3 PM; Saturday, 1–3 PM

Note: Pastor Dan and Kyle will be on the SPU campus for their Church and Ministry Fair on Thursday from 1 to 3.

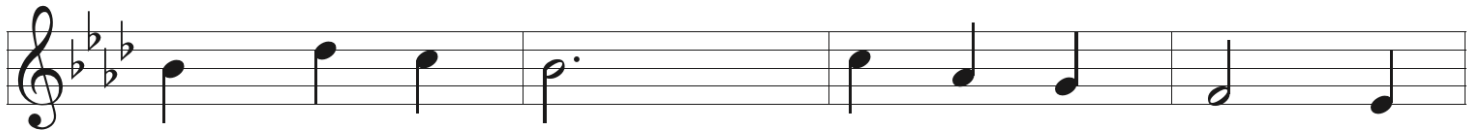
God's Work, Our Hands



1 God's work, our hands: work - ing to - geth - er,
2 God's work, our feet: trav - 'ling to - geth - er,
3 God's work, our voice: sing - ing to - geth - er,
4 God is at work in and a - round us:



build - ing a fu - ture, re - pair - ing the world,
fol - low - ing Je - sus to plac - es un - known,
prais - ing, pro - claim - ing to all who will hear,
seed - lings are sprout - ing and bread's on the rise!



rais - ing up homes, plant - ing new gar - dens,
walk - ing as friends, march - ing for free - dom,
pray - ing for peace, shout - ing for jus - tice,
Washed and set free, hum - bled and hon - ored,



feed - ing the hun - gry and shelt - 'ring the cold.
run - ning the race with God's fu - ture the goal.
claim - ing God's love for the lost and the least.
gift - ed by grace, we re - spond in God's love.



Bless, God, our hands as we work in your name,
Bless, God, our feet as we fol - low your way,
Bless, God, our voice as we speak in your name,
Bless, God, our lives as we an - swer your call,



shar - ing the good news of your Gos - pel.