

FOURTH SUNDAY AFTER EPIPHANY

January 29, 2023

10:30 AM

↑ = *Stand* **C**: *Congregation* **A**: *Worship Assistant* **P**: *Presiding Minister*

Hymns may be found in the red hymnals in the pews. • Large-print hymns are available in the narthex as you enter. • Quiet Bags with books and soft toys, or Doodle Bags with markers are available in the narthex for children.

Prelude

Chorale preludes on NUN DANKET ALLE GOTT (ELW 840)

Edwin Childs (b. 1945)

G. F. Kauffmann (1679–1735)

J.S. Bach (1685–1750)

J. C. Oley (d. 1789)

Introit

Psalm 105:3,4,1

Let the hearts of those rejoice who seek the LORD;
seek the LORD and God's strength; seek God's face evermore.
O give thanks unto the LORD and call upon God's name;
tell the people what things God has done.

Welcome

↑ Gathering Hymn

Now Thank We All Our God

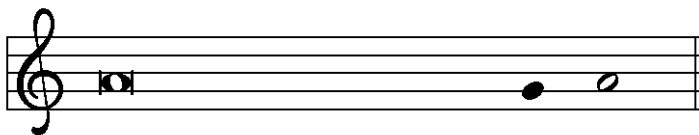
ELW 840

↑ Greeting

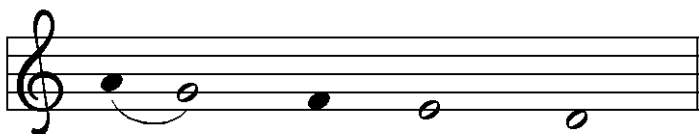
P: The grace of our Lord Jesus Christ, the love of God,
and the communion of the Holy Spirit be with you all.

C: **And also with you.**

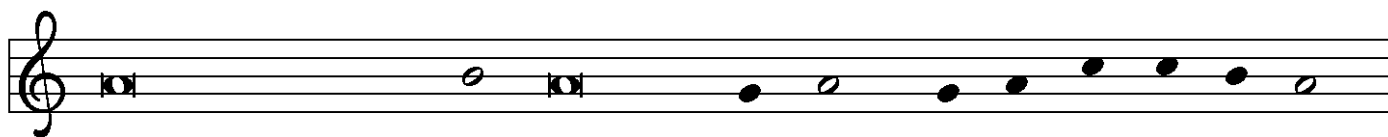
↑ Kyrie



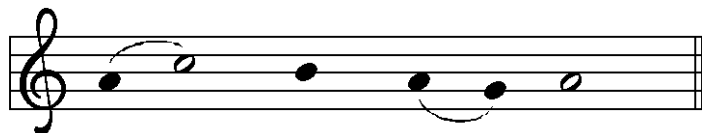
In peace, let us pray to the Lord.



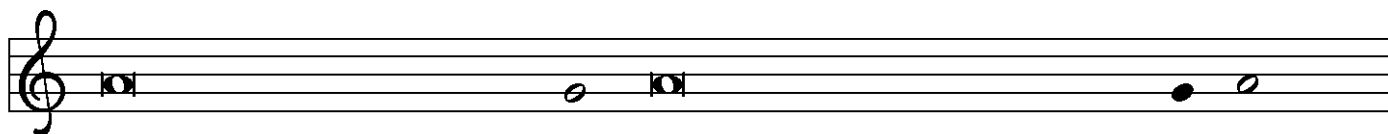
Lord, have mer - cy.



For the peace from a-bove, and for our sal - vation, let us pray to the Lord.



Lord, have mer - cy.



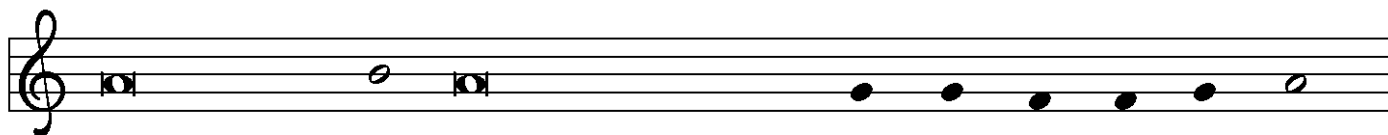
For the peace of the whole world, for the well-being of the church of God,



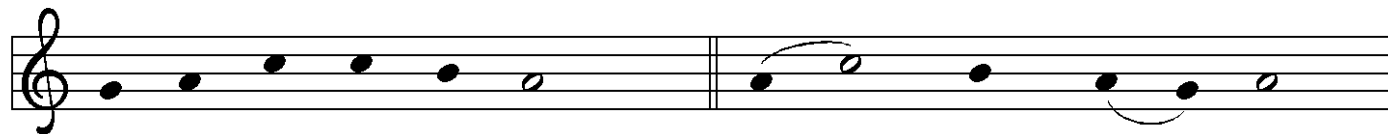
and for the unity of all, let us pray to the Lord.



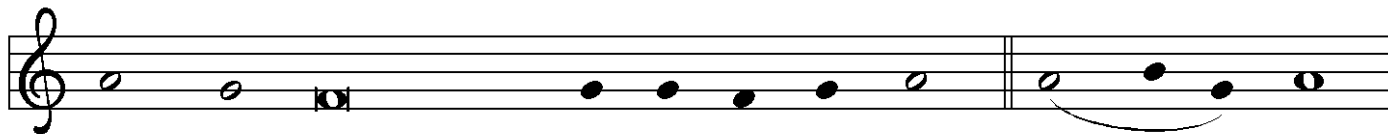
Lord, have mer - cy.



For this holy house, and for all who offer here their wor-ship and praise,



let us pray to the Lord. Lord have mer - cy.



Help, save, comfort, and de - fend us, gra-cious Lord. A - men.

↑Hymn of Praise



1 All glo - ry be to God on high, and peace to earth be
2 Lord Je - sus Christ, the on - ly Son of God, cre - a - tion's
3 To you a - lone, O God, we cry, the Ho - ly One we



giv - en! Let an - gels sing, let all re - ply; good -
au - thor, O Lamb of God, your death a - lone takes
name you; for you a - lone are God most high, one



will breaks forth from heav - en! Lord God Al - might - y,
sin a - way for - ev - er. Stretch out your arms to
liv - ing God we claim you: we wor - ship you, Lord



heav - en's king, we wor - ship you, our thanks we sing, we
ev - 'ry land, and, as you reign at God's right hand, re -
Je - sus Christ, with God the Spir - it ev - er blest, in



praise you for your glo - ry.
ceive our prayer; have mer - cy.
God the Fa - ther's glo - ry. A - - - men.

↑Prayer of the Day

P: The Lord be with you.

C: **And also with you.**

P: Let us pray.

Holy God, you confound the world's wisdom
in giving your kingdom to the lowly and the pure in heart.
Give us such a hunger and thirst for justice,
and perseverance in striving for peace,
that in our words and deeds the world may see the life of your Son,
Jesus Christ, our Savior and Lord.

C: **Amen.**

First Reading

Micah 6:1-8

A: Word of God, Word of life.

C: **Thanks be to God.**

Psalmody

Psalm 15

*To begin the psalm, the Choir sings the Refrain in its entirety and all repeat.
Thereafter, the Refrain is sung as indicated below.*

Refrain

Introduction: Everyone:



LORD, who shall a-bide up-on your ho-ly hill?

¹Lord, who may dwell in your tabernacle?

Who may abide upon your holy hill?

²Those who lead a blameless life and do what is right,
who speak the truth from their heart;

Refrain

³they do not slander with the tongue, they do no evil to their friends;
they do not cast discredit upon a neighbor.

⁴In their sight the wicked are rejected, but they honor
those who fear the Lord.

They have sworn upon their health and do not take back their word.

⁵They do not give their money in hope of gain, nor do they take bribes against the innocent.

Those who do these things shall never be overthrown.

Refrain

Second Reading

1 Corinthians 1: 18-31

A: Word of God, Word of life.

G: Thanks be to God.

↑ Gospel Acclamation



Al - le - lu - ia. Lord, to whom shall we go?



You have the words of e - ter - nal life. Al - le - lu - ia.

↑ The Holy Gospel

Matthew 5:1-12

P: The Gospel according to St. Matthew, the fifth chapter.

G: Glory to you, O Lord.

After the reading

P: The Gospel of the Lord.

G: Praise to you, O Christ.

Sermon

Pastor Terry Kylo

↑ Hymn of the Day

Lord, Whose Love in Humble Service

ELW 712

↑ Apostles' Creed

☩: I believe in God, the Father almighty,
creator of heaven and earth.

I believe in Jesus Christ, God's only Son, our Lord,
who was conceived by the Holy Spirit,
born of the virgin Mary,
suffered under Pontius Pilate,
was crucified, died, and was buried;
he descended to the dead.

On the third day he rose again;
he ascended into heaven,
he is seated at the right hand of the Father,
and he will come to judge
the living and the dead.

I believe in the Holy Spirit,
the holy catholic church,
the communion of saints,
the forgiveness of sins,
the resurrection of the body,
and the life everlasting.

Amen.

Prayers of the Church *(please be seated or kneel)*

A: . . . Lord, in your mercy.

☩: Hear our prayer.

Holy Communion – All baptized Christians who seek a taste of the new and forgiven life in Jesus Christ are welcome to receive the sacrament. We confess and believe that Christ in his risen form is truly present in the Sacrament of Bread and Wine and that by sharing in this meal, we share in Christ’s risen presence among us.

The ministration of the Sacrament is given in two ways:

In the pew:

You may commune in the pews with individual elements. These are available in the narthex as you enter.

When invited to commune, peel off the bottom tab to eat the bread; peel off the top tab to drink the wine. The waste can go in the paper bag found in each pew.

By intinction:

When prompted by the ushers, come down the center aisle to kneel at the railing; please sanitize your hands.

Receive a wafer in your hands. Dip it in a chalice, either wine or grape juice, before partaking. Use the outside aisle to return to your seat.

↑ **The Great Thanksgiving**

P: The Lord be with you.

C: **And also with you.**

P: Lift up your hearts.

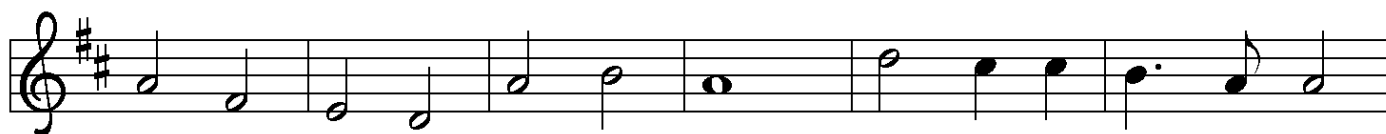
C: **We lift them to the Lord.**

P: Let us give thanks to the Lord our God.

C: **It is right to give our thanks and praise.**

P: It is indeed right, our duty and our joy . . .
. . . praise your name and join their unending hymn:

↑ Sanctus



Ho - ly, ho - ly, ho - ly Lord, Lord God of pow'r and might,



heav'n and earth are full of your glo - ry.



Ho - san - na in the high - est. Bless - ed is he who comes



in the name of the Lord. Ho - san - na in the high - est.

↑ Words of Institution

↑ Lord's Prayer

P: As we prepare our hearts for this holy meal,
let us pray the prayer Jesus taught us:

C: **Our Father in heaven, hallowed be your name,
your kingdom come, your will be done,
on earth as in heaven.**

Give us today our daily bread.

Forgive us our sins

as we forgive those who sin against us.

Save us from the time of trial

and deliver us from evil.

**For the kingdom, the power, and the glory are yours,
now and forever.**

Amen.

↑ Invitation to the Table

P: Come and taste the joy of God!

Agnus Dei



Lamb of God, you take a-way the sin of the world; have mer-cy on



us. Lamb of God, you take a-way the sin of the world; have



mer-cy on us. Lamb of God, you take a-way the



sin of the world; grant us peace, grant us peace.

Anthem at the Distribution

Beloved, God's Chosen
Robert Hobby (b. 1962)

↑ Post-Communion Prayer

P: Holy One,
we thank you for the healing
that springs forth abundantly from this table.
Renew our strength to do justice,
love kindness,
and journey humbly with you.

G: Amen.

Announcements

↑ Benediction

P: God bless you and keep you,
✝ Jesus grant you grace and truth,
and the Spirit send peace upon your hearts,
now and forever.

G: Amen.

↑ Sending Hymn

To Be Your Presence
ELW 545

↑ Dismissal

A: Go in peace. Serve the Lord.

G: Thanks be to God.

Postlude

Prelude, Fugue, and Chaconne in C major
Dietrich Buxtehude (1637–1707)

About Today's Music

QALC's pipe organ is built using principles of construction and tonal design from the Baroque era (about 1600 to 1750), when art music for worship in Lutheran churches reached great heights of craft and influence. J. S. Bach is certainly the most famous Lutheran composer of the era, but others including Dietrich Buxtehude, who influenced Bach, continue to be heard in churches and concert halls around the world today. Today's postlude by Buxtehude was one of my audition pieces for the Cantor position in 2019. Written in three sections, Buxtehude employs a "fantastical style" to display a wide variety of the instrument's sounds. As we prepare for QALC's annual meeting today, I'm especially mindful of how blessed I am to be your full-time Cantor. Thank you for the opportunities you give me as organist, choir director, composer, and more. Soli Deo Gloria – To God Alone the Glory!

ANNOUNCEMENTS — JANUARY 29 , 2023

WELCOME! Please fill out a CONNECT card if you are visiting us today, if you wish to receive our emails or newsletter, or if you wish the pastor to contact you. PRAY cards may be used for prayer requests. Place cards in the offering plate as you leave.

WE WELCOME TO WORSHIP TODAY THE REV. TERRY KYLLO, a Lutheran pastor serving as the executive director of Paths to Understanding: Bridging Bias and Building Unity. He is the founder of Neighbors in Faith, answering Islamophobia and building the beloved community. NIF is now a program of Paths to Understanding. Terry has learned that when we forget how to recognize other humans we lose part of our own humanity , and he believes we do not have to live this way. Terry's leadership has been recognized by Faith Action Network, The Muslim Association of Puget Sound and Lutheran School of Theology at Chicago.

FORUM WITH TERRY KYLLO MEETS TODAY at 9 AM in the Conference Room.

The Strategy of the Abrahamic Tradition:

An Ancient Wisdom for Building Human Community

We can feel the intensity of divisions in our nation within our families, friends, churches, and within our politics. In response to many anxieties, some are being tempted to sort themselves into exclusive in-groups and dehumanize others. The Abrahamic tradition was birthed in a time like this and offers ancient wisdom for how we can build a brighter future together. We will consider the core of the Abrahamic tradition, how Jesus embodied that tradition, and the motivations for Christian Churches to participate in multi-faith partnerships to restore our sense of community.

ANNUAL CONGREGATIONAL MEETING TODAY AT NOON

You are invited to the Fellowship Hall after 10:30 worship, where light refreshments will be served. We plan to begin at noon, and the meeting will also be accessible via Zoom. (Your Sunday morning email includes a Zoom link to attend remotely and an online link to the Annual Report.) Paper copies of the Annual Report are available this morning in the narthex. Note that it is in two sections this year – reports and financials. The purpose of the annual meeting of the congregation is to review and celebrate the previous year's accomplishments with reports from the pastor, the Council presidents, treasurer, and others; to elect officers and delegates for the coming year; and to hear and vote on this year's Guidelines for Expenditures and any other proposals requiring the majority approval of the membership. A quorum of members is required to accomplish our tasks, and of course we hope you will be able to stay.

A MEMORIAL SERVICE for Pastor Dan's mother, Olga Peterson, will be held at 11 AM on Saturday, February 11 at First Lutheran Church in Orland, CA. The service will also be live-streamed at orlandlutheran.com. QALC will send flowers to that service. Cards may be mailed to the Peterson family at 1155 Almond Vista Court, Chico, CA 95926.

OFFICE HOURS THIS WEEK

Main Office (Barb Bash): The office will be open Tuesday–Friday, 9:00–5:30

Cantor Kyle will be in the office Wednesday – Thursday. Feel free to contact him if you wish to make an appointment; email cantor@queenannelutheran.org or call the office (206-284-1960).

Pastor Dan will be away until approximately February 13 following the death of his mother. Pastor Kristy Daniels will preside on February 5 and 12.

For emergency pastoral care in Pastor Dan’s absence, pastors are on call from Ballard First Lutheran: Pastor Elise (803-944-7006) and Pastor Erik (206-355-3855), and from Church of Steadfast Love, Pastor Kristy Daniels (206-788-6745) or kdaniels@compasshousingalliance.org.

PLEASE CONSIDER SIGNING UP! We have room on our **Coffee Host** sign-up sheet as well as the one for donating **Flowers for the Altar**; both are on the narthex railing. **We are also in need of help in worship:** Lectors and Greeters are needed for services. Sign-up sheets are on the narthex table for upcoming Sundays.

Questions about how to do something?

Contact the church office, the Worship & Music Committee, or simply speak with someone who has done the task.

2/25: SAVE THE DATE

Women of Queen Anne Lutheran are invited to **Lenten Breakfast** on Saturday, February 25 from 9:30 AM to 11 AM in the Fellowship Hall. This is an opportunity to share fellowship with the women of the congregation – rekindle relationships and make new friends. It is also an opportunity to invite your friends. Breakfast will be provided, and Pastor Deb Squires will be leading us in a special program. We look forward to celebrating the start of the Lenten season together!

You may RSVP via the Doodle Poll link in your church email, or you can email Gretchen at gretchendr@comcast.net. If you have special dietary needs, email Dolly Smith at ohanasurf@comcast.net or leave a message at 206-729-0117.

THIS WEEK'S CALENDAR

Sunday, January 29

Worship	8:00 AM
Forum (Conf. Rm. and Zoom)	9:00 AM
Worship	10:30 AM
Annual Meeting (FH)	12:00 PM

Monday

QA Book Group (Narthex)	7:00 PM
Food Addicts in Recovery (FH)	7:00 PM

Wednesday

Sewing & Service (downstairs)	10:00 AM
AA Counterbalance (FH)	8:00 PM

Thursday

Choir Rehearsal	7:00 PM
-----------------	---------

Saturday

Alanon Women (upstairs)	10:30 AM
AA Shanty Trudgers (upstairs)	7:00 PM

Sunday, February 5

Worship	8:00 AM
Forum (Conf. Rm. and Zoom)	9:00 AM
Worship	10:30 AM