

FIFTH SUNDAY AFTER EPIPHANY

February 5, 2023

10:30 AM

↑ = *Stand* **C**: *Congregation* **A**: *Worship Assistant* **P**: *Presiding Minister*

Hymns may be found in the red hymnals in the pews. • Large-print hymns are available in the narthex as you enter. • Quiet Bags with books and soft toys, or Doodle Bags with markers are available in the narthex for children.

Prelude

Chorale preludes on UNSER HERRSCHER (ELW 533)
Heinrich Fleischer (1912–2006)
Mark Rippe (pub. 2022)

Introit

Psalm 95:6,7,1

O come, let us worship and fall down, and kneel before the LORD our maker, for the LORD is our God. O come, let us sing unto the LORD; let us heartily rejoice in the strength of our salvation.

Welcome

↑ Gathering Hymn

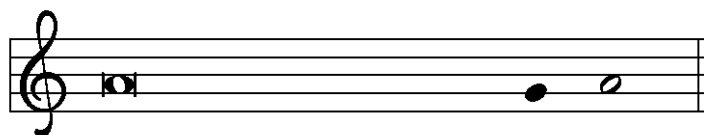
Open Now Thy Gates of Beauty
ELW 533

↑ Greeting

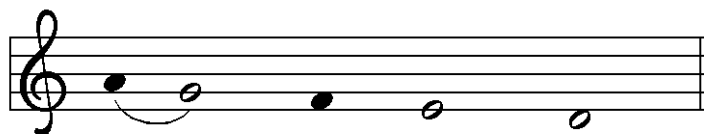
P: The grace of our Lord Jesus Christ, the love of God,
and the communion of the Holy Spirit be with you all.

C: **And also with you.**

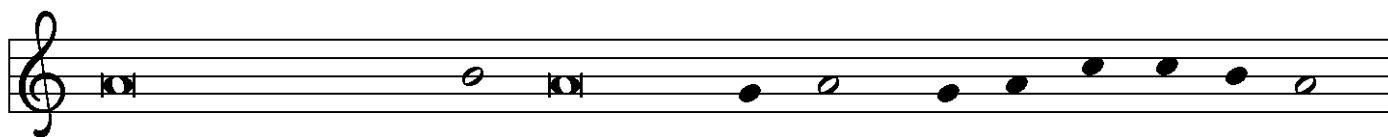
↑ Kyrie



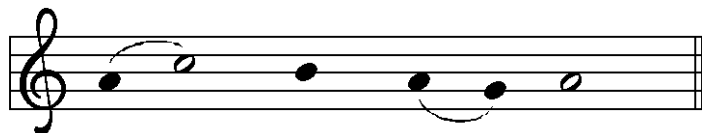
In peace, let us pray to the Lord.



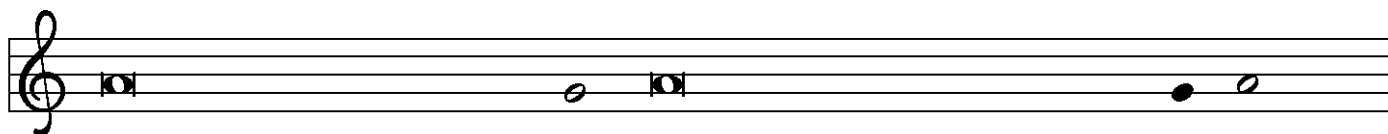
Lord, have mer - cy.



For the peace from a-bove, and for our sal - vation, let us pray to the Lord.



Lord, have mer - cy.



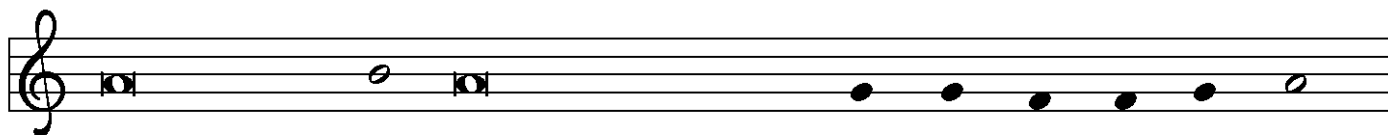
For the peace of the whole world, for the well-being of the church of God,



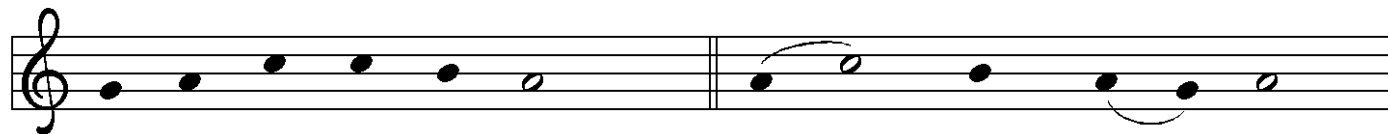
and for the unity of all, let us pray to the Lord.



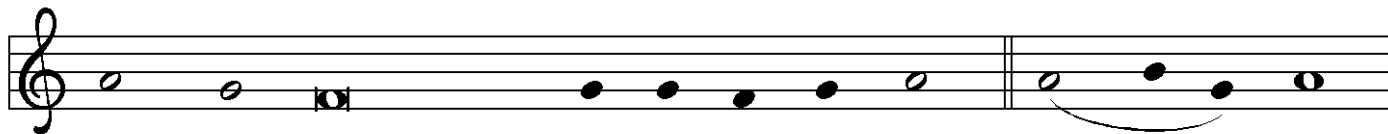
Lord, have mer - cy.



For this holy house, and for all who offer here their wor-ship and praise,



let us pray to the Lord. Lord have mer - cy.



Help, save, comfort, and de - fend us, gra-cious Lord. A - men.

↑Hymn of Praise



1 All glo - ry be to God on high, and peace to earth be
2 Lord Je - sus Christ, the on - ly Son of God, cre - a - tion's
3 To you a - lone, O God, we cry, the Ho - ly One we



giv - en! Let an - gels sing, let all re - ply; good -
au - thor, O Lamb of God, your death a - lone takes
name you; for you a - lone are God most high, one



will breaks forth from heav - en! Lord God Al - might - y,
sin a - way for - ev - er. Stretch out your arms to
liv - ing God we claim you: we wor - ship you, Lord



heav - en's king, we wor - ship you, our thanks we sing, we
ev - 'ry land, and, as you reign at God's right hand, re -
Je - sus Christ, with God the Spir - it ev - er blest, in



praise you for your glo - ry.
ceive our prayer; have mer - cy.
God the Fa - ther's glo - ry. A - - - men.

↑Prayer of the Day

P: The Lord be with you.

C: **And also with you.**

P: Let us pray.

Lord God, with endless mercy you receive the prayers
of all who call upon you.

By your Spirit show us the things we ought to do,
and give us the grace and power to do them,
through Jesus Christ, our Savior and Lord.

C: **Amen.**

First Reading

Isaiah 58:1-9a [9b-12]

A: Word of God, Word of life.

C: **Thanks be to God.**

Psalmody

Psalm 112:1-9

*To begin the psalm, the Choir sings the Refrain in its entirety and all repeat.
Thereafter, the Refrain is sung as indicated below.*

Refrain

Introduction: *Everyone:*

Light shines in the dark-ness for the up - right.

¹Hallelujah! Happy are they who fear the Lord
and have great delight in God's commandments!

²Their descendants will be mighty in the land;
the generation of the upright will be blessed.

³Wealth and riches will be in their house,
and their righteousness will last forever.

⁴Light shines in the darkness for the upright;
the righteous are merciful and full of compassion.

Refrain

⁵It is good for them to be generous in lending
and to manage their affairs with justice.

⁶For they will never be shaken;
the righteous will be kept in everlasting remembrance.

⁷They will not be afraid of any evil rumors;
their heart is steadfast, trusting in the Lord.

⁸Their heart is established and will not shrink,
until they see their desire upon their enemies.

⁹They have given freely to the poor,
and their righteousness stands fast forever;
they will hold up their head with honor.

Refrain

Second Reading

1 Corinthians 2:1-12 [13-16]

A: Word of God, Word of life.

G: Thanks be to God.

↑ Gospel Acclamation



↑ The Holy Gospel

Matthew 5:13-20

P: The Gospel according to St. Matthew, the fifth chapter.

G: Glory to you, O Lord.

After the reading

P: The Gospel of the Lord.

G: Praise to you, O Christ.

↑ Hymn of the Day

Rise, Shine, You People
ELW 665

↑ Apostles' Creed

☩: I believe in God, the Father almighty,
creator of heaven and earth.

I believe in Jesus Christ, God's only Son, our Lord,
who was conceived by the Holy Spirit,
born of the virgin Mary,
suffered under Pontius Pilate,
was crucified, died, and was buried;
he descended to the dead.

On the third day he rose again;
he ascended into heaven,
he is seated at the right hand of the Father,
and he will come to judge
the living and the dead.

I believe in the Holy Spirit,
the holy catholic church,
the communion of saints,
the forgiveness of sins,
the resurrection of the body,
and the life everlasting.

Amen.

Prayers of the Church (*please be seated or kneel*)

☩: . . . Lord, in your mercy.

☩: Hear our prayer.

Holy Communion – All baptized Christians who seek a taste of the new and forgiven life in Jesus Christ are welcome to receive the sacrament. We confess and believe that Christ in his risen form is truly present in the Sacrament of Bread and Wine and that by sharing in this meal, we share in Christ’s risen presence among us.

The ministration of the Sacrament is given in two ways:

In the pew:

You may commune in the pews with individual elements. These are available in the narthex as you enter.

When invited to commune, peel off the bottom tab to eat the bread; peel off the top tab to drink the wine. The waste can go in the paper bag found in each pew.

By intinction:

When prompted by the ushers, come down the center aisle to kneel at the railing; please sanitize your hands.

Receive a wafer in your hands. Dip it in a chalice, either wine or grape juice, before partaking. Use the outside aisle to return to your seat.

↑ **The Great Thanksgiving**

P: The Lord be with you.

C: **And also with you.**

P: Lift up your hearts.

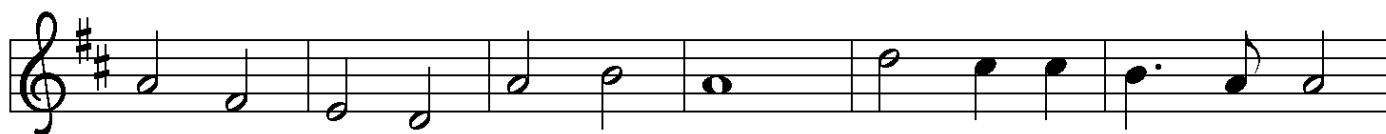
C: **We lift them to the Lord.**

P: Let us give thanks to the Lord our God.

C: **It is right to give our thanks and praise.**

P: It is indeed right, our duty and our joy . . .
. . . praise your name and join their unending hymn:

↑ Sanctus



Ho - ly, ho - ly, ho - ly Lord, Lord God of pow'r and might,



heav'n and earth are full of your glo - ry.



Ho - san - na in the high - est. Bless - ed is he who comes



in the name of the Lord. Ho - san - na in the high - est.

↑ Words of Institution

↑ Lord's Prayer

☐: As we prepare our hearts for this holy meal,
let us pray the prayer Jesus taught us:

☑: **Our Father in heaven, hallowed be your name,
your kingdom come, your will be done,
on earth as in heaven.**

Give us today our daily bread.

Forgive us our sins

as we forgive those who sin against us.

Save us from the time of trial

and deliver us from evil.

**For the kingdom, the power, and the glory are yours,
now and forever.**

Amen.

↑ Invitation to the Table

P: Come and taste the joy of God!

Agnus Dei



Lamb of God, you take a-way the sin of the world; have mer-cy on



us. Lamb of God, you take a-way the sin of the world; have



mer-cy on us. Lamb of God, you take a-way the



sin of the world; grant us peace, grant us peace.

Distribution Hymn

This Little Light of Mine
ELW 677

↑ Post-Communion Prayer

P: Holy One,
we thank you for the healing
that springs forth abundantly from this table.
Renew our strength to do justice,
love kindness,
and journey humbly with you.

G: Amen.

Announcements

↑ Benediction

P: God bless you and keep you,
✝ Jesus grant you grace and truth,
and the Spirit send peace upon your hearts,
now and forever.

G: Amen.

↑ Sending Hymn

On Our Way Rejoicing
ELW 537

↑ Dismissal

A: Go in peace. Serve the Lord.

G: Thanks be to God.

Postlude

Processional of Joy
Lawrence J. Meyer (1928–1996)

About Today's Music

Today's Hymn of the Day, "Rise, Shine, You People" (ELW 665) is sung fairly often at QALC regardless of the time of year, but the hymn's themes and images are especially appropriate to the Sundays after Epiphany. In fact, the hymn was written for this time of year and was distributed as a worship insert from Augsburg Publishing House for the first Sunday in February, 1974. The text is by Ronald A. Klug (b. 1939), an educator and writer who worked at Augsburg from 1970 to 1976. Klug's text drew inspiration from Isaiah 60, "Arise, shine, for your light has come," as well as from the experience of singing hymns at midnight for the Vigil of Easter while staying at a Lutheran monastery in Michigan for Holy Week – for Klug, the jubilation at the end of the dramatic vigil liturgy brought "the feeling of absurdity, the foolishness of the gospel but also spiritual warfare, our hymns and prayers 'hurled' at the Evil One, like an inkpot!" (This also hearkens to the legend of Martin Luther throwing his inkpot at the wall in defiance of the devil.) The music was written specifically for Klug's text by prolific church music composer Dale Wood (1934–2003), and the tune name, WOJTKIEWIECZ, is Wood's original Polish family name, which was simplified when his family emigrated to the United States.

ANNOUNCEMENTS — FEBRUARY 05 , 2023

WELCOME! Please fill out a CONNECT card if you are visiting us today, if you wish to receive our emails or newsletter, or if you wish the pastor to contact you. PRAY cards may be used for prayer requests. Place cards in the offering plate as you leave.

WE WELCOME TO WORSHIP REV. KRISTY DANIELS of the Church of Steadfast Love, a congregation that operates inside the Compass Center in Pioneer Square. We are so grateful for her presence with us during this time. She will be with us next Sunday as well.

FLOWERS FOR THE ALTAR are provided today by Jean McLauchlan, to the glory of God and in memory of her sister Ruthie, who would have turned 98 last Friday.

A MEMORIAL SERVICE for Pastor Dan's mother, Olga Peterson, will be held at 11 AM on Saturday, February 11 at First Lutheran Church in Orland, CA. The service will also be live-streamed at orlandlutheran.com. QALC will send flowers to that service. Cards may be mailed to the Peterson family at 1155 Almond Vista Court, Chico, CA 95926.

FORUM NEXT SUNDAY, FEB. 12:

Griefs Observed: My Journey with C.S. Lewis

QALC member Jan Olson will present this forum, drawing on the writings of C.S. Lewis and on his own journey through grief and loss. Please come to Forum in the Conference Room at 9 AM or join us online via Zoom (find the link in your church email or online on the FORUM page.)

PLEASE CONSIDER SIGNING UP! We have room on our **Coffee Host** sign-up sheet as well as the one for donating **Flowers for the Altar**; both are on the narthex railing.

We are also in need of help in worship: Lectors and Greeters are needed for services. Sign-up sheets are on the narthex table for upcoming Sundays.

Questions about how to do something?

Contact the church office, the Worship & Music Committee, or simply speak with someone who has done the task.

QA BOOK GROUP moved their next meeting to Monday, February 20 (President's Day). We are reading *The Lincoln Highway* by Amor Towles. Discussion will be led by Candy Mathes.

FREE TAX HELP: This year, the AARP Tax-Aide program has returned to the Seattle libraries. Walk-ins are welcome at the Queen Anne Library every Saturday from 11:30 AM-3:00 PM through April 15. Flyers are in the narthex.

SERVING NEXT SUNDAY, FEB. 12

8:00 AM:

Lector: *Needed*

10:30 AM:

Greeter: *Needed*

Lector: Joan Kavanaugh

Ushers: *Needed*

Counters: Bridget Boysen, John Reese

Audio: Connie Wurm

PREPARING FOR LENT:

CHAPEL WORK PARTY, FEBRUARY 12:



After 10:30 worship next week, all are invited to join a brief work-party in the chapel. As we transform our chapel from the storage area it had become during the pandemic back to a sacred space for worship, we will clear out all the furnishings and random items found there. During the week following the 12th, the carpet and all the purple chairs will be cleaned. We welcome anyone able to help next Sunday.



ASH WEDNESDAY is February 22:

Worship, with the imposition of ashes, will be held at 12 NOON in the chapel and at 7:30 PM in the sanctuary. Please join us to enter the season together.

WEDNESDAYS IN LENT, from March 1 through March 29:

Noon Worship –

Every Wednesday during Lent, we will have a brief worship service in the chapel beginning at noon. The order of worship for Morning Prayer is followed, which includes a lectionary reading, a brief homily and a hymn. All are welcome.

Worship at 7:30 PM –

Every Wednesday we will also gather in the chapel in the evening at 7:30 PM. The order of worship for Night Prayer (Compline) is followed. The responsively-sung liturgy includes psalm and scripture.

OFFICE HOURS THIS WEEK

Main Office (Barb Bash): The office will be open Tuesday–Friday, 9:00–5:30

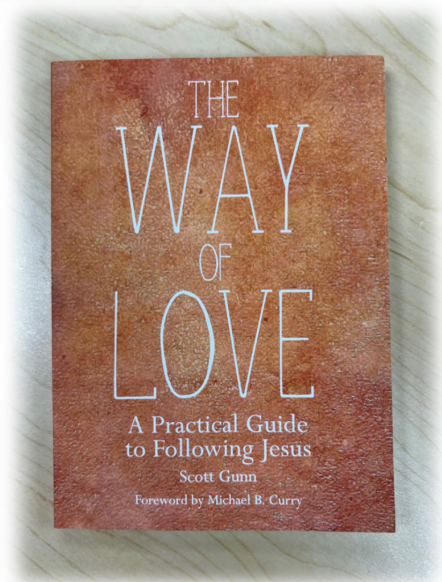
Cantor Kyle will be in the office Wednesday – Thursday. Feel free to contact him if you wish to make an appointment; email cantor@queenannelutheran.org

Pastor Dan will be away until February 13. **For emergency pastoral care** in Pastor Dan's absence, pastors are on call from Ballard First Lutheran: Pastor Elise (803-944-7006) and Pastor Erik (206-355-3855), and from Church of Steadfast Love, Pastor Kristy Daniels (206-788-6745) or kdaniels@compasshousingalliance.org



The Women of Queen Anne Lutheran invite you to our **Lenten Breakfast** on **Saturday, February 25** from **9:30 AM to 11 AM** in the Fellowship Hall.

This is an opportunity to share fellowship with the women of the congregation—rekindle relationships and make new friends. It's also an opportunity to invite your friends.



Breakfast will be provided; we will have a short business meeting and Pastor Deb Squires will be leading us in a special program drawing from the book *The Way of Love* by Scott Gunn.

You may also choose to attend remotely via Zoom. Look for the link in your Friday emails, or contact the church office at admin@queenannelutheran.org.

We look forward to celebrating the start of the Lenten season together!

You may RSVP via the Doodle Poll link in your church email, or you can contact Gretchen Richey or Dolly Smith.

If you have special dietary needs, please let Dolly know.

Gretchen Richey: email gretchendr@comcast.net

Dolly Smith: Call 206-729-0117 or email ohanasurf@comcast.net