

# CHRIST THE KING

November 26, 2023

10:30 AM



↑ = *Stand*   **C**: *Congregation*   **A**: *Worship Assistant*   **P**: *Presiding Minister*

Hymns may be found in the red hymnals in the pews. • Large-print hymns are available in the narthex as you enter. • Quiet Bags with books and soft toys, or Doodle Bags with markers are available in the narthex for children.

## Prelude

*Lord, enthroned in heavenly splendor* (BRYN CALFARIA),  
David N. Johnson

## Welcome

## ↑ Gathering Hymn

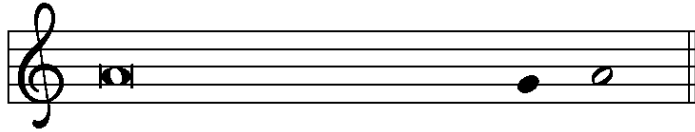
*Jesus Shall Reign*  
ELW 434

## ↑ Greeting

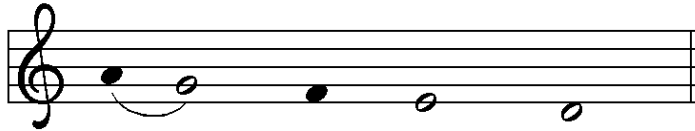
**P**: The grace of our Lord Jesus Christ, the love of God,  
and the communion of the Holy Spirit be with you all.

**C**: **And also with you.**

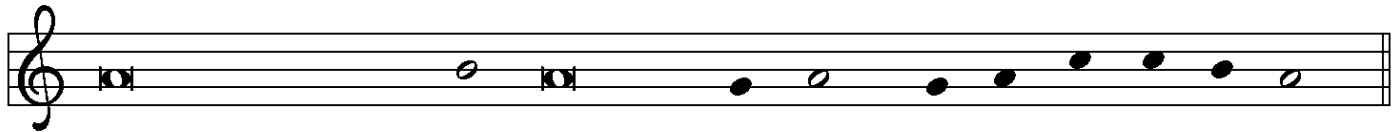
↑ Kyrie and Canticle of Praise



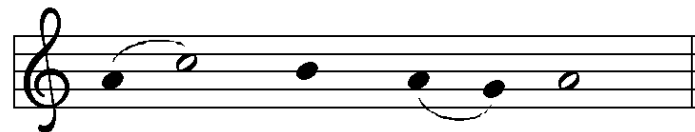
In peace, let us pray to the Lord.



Lord, have mer - cy.



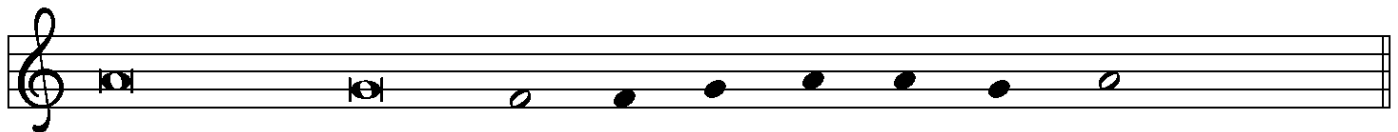
For the peace from a-bove, and for our sal - vation, let us pray to the Lord.



Lord, have mer - cy.



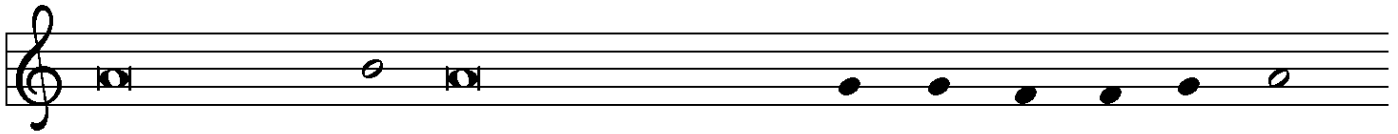
For the peace of the whole world, for the well-being of the church of God,



and for the unity of all, let us pray to the Lord.



Lord, have mer - cy.



For this holy house, and for all who offer here their wor-ship and praise,



let us pray to the Lord. Lord have mer - cy.



Help, save, comfort, and de-fend us, gra-cious Lord. A - men.

*Refrain*

Assisting minister



This is the feast of vic-to-ry for our God. Al-le - lu - ia.

All



1 Wor-thy is Christ, the Lamb who was slain, whose blood set us



free to be peo-ple of God. Pow - er and rich - es and wis - dom and



strength, and hon - or and bless-ing and glo - ry are his.

*Refrain*



This is the feast of vic-to-ry for our God. Al-le - lu - ia.

2 Sing with all the peo - ple of God and join in the

hymn of all cre - a - tion: Bless - ing and hon - or and glo - ry and

might be to God and the Lamb for - ev - er. A - men.

*Final refrain*

This is the feast of vic-to-ry for our God, for the Lamb who was slain

has be - gun his reign. Al - le - lu - ia. Al - le - lu - ia.

## Prayer of the Day

**P**: The Lord be with you.

**G**: **And also with you.**

**P**: Let us pray.

O God of power and might,  
your Son shows us the way of service,  
and in him we inherit the riches of your grace.  
Give us the wisdom to know what is right  
and the strength to serve the world you have made,  
through Jesus Christ, our Savior and Lord,  
who lives and reigns with you and the Holy Spirit,  
one God, now and forever.

**G**: **Amen.**

## First Reading

Ezekiel 34:11-16, 20-24

**A**: Word of God, Word of life.

**G**: Thanks be to God.

## Psalmody

Psalm 95:1-7a

*The psalm is spoken responsively by whole verse.*

*The congregation responds to the leader with the words in boldface type.*

- <sup>1</sup>Come, let us sing to the Lord;  
let us shout for joy to the rock of our salvation.
- <sup>2</sup>**Let us come before God's presence with thanksgiving  
and raise a loud shout to the Lord with psalms.**
- <sup>3</sup>For you, Lord, are a great God,  
and a great ruler above all gods.
- <sup>4</sup>**In your hand are the caverns of the earth;  
the heights of the hills are also yours.**
- <sup>5</sup>The sea is yours, for you made it,  
and your hands have molded the dry land.
- <sup>6</sup>**Come, let us worship and bow down,  
let us kneel before the Lord our maker.**
- <sup>7a</sup>For the Lord is our God,  
**and we are the people of God's pasture and the sheep of God's hand.**

## Second Reading

Ephesians 1:15-23

**A**: Word of God, Word of life.

**G**: Thanks be to God.

↑ Gospel Acclamation



Al - le - lu - ia. Lord, to whom shall we go?



You have the words of e - ter - nal life. Al - le - lu - ia.

↑ The Holy Gospel

Matthew 25:31-46

**P**: The Gospel according to St. Matthew, the twenty-fifth chapter.

**G**: **Glory to you, O Lord.**

*Following the reading*

**P**: The Gospel of the Lord.

**G**: **Praise to you, O Christ.**

Sermon

Rev. Dan Peterson

↑ Hymn of the Day

*Beautiful Savior*

ELW 838

## ↑ Apostles' Creed

**☩**: I believe in God, the Father almighty,  
creator of heaven and earth.

I believe in Jesus Christ, God's only Son, our Lord,  
who was conceived by the Holy Spirit,  
born of the virgin Mary,  
suffered under Pontius Pilate,  
was crucified, died, and was buried;  
he descended to the dead.

On the third day he rose again; he ascended into heaven,  
he is seated at the right hand of the Father,  
and he will come to judge  
the living and the dead.

I believe in the Holy Spirit,  
the holy catholic church,  
the communion of saints,  
the forgiveness of sins,  
the resurrection of the body,  
and the life everlasting.  
Amen.



The Apostles' Creed emphasizes the full humanity of Christ (e.g., he was born, suffered, and died) in response to one of the earliest heresies, namely, the view that Christ only "appeared" to be human. Why? Detractors believed that the Spirit of God, which is good, could not dwell in a material or physical body, which is evil. When we profess the Apostles' Creed, following Jewish tradition, we insist otherwise. The world God made is good! With great joy and without contradiction, therefore, we can say with John 1:14 that "the Word became flesh and dwelled among us."

## Prayers of the Church *(please be seated or kneel)*

**A**: . . . Lord, in your mercy.

**☩**: Hear our prayer.

## ↑ Sharing of Peace

**P**: The peace of Christ be with you always.

**C**: **And also with you.**

**Holy Communion** – All people who seek a taste of the new and forgiven life in Jesus Christ are welcome to receive the sacrament. We confess and believe that Christ, who fills all things, comes to us in a special way through the Sacrament of Bread and Wine and that by sharing in this meal, we share in Christ's real presence among us.

The ministration of the Sacrament is given in two ways:

### **In the pew:**

You may commune in the pews with individual elements. These are available in the narthex as you enter.

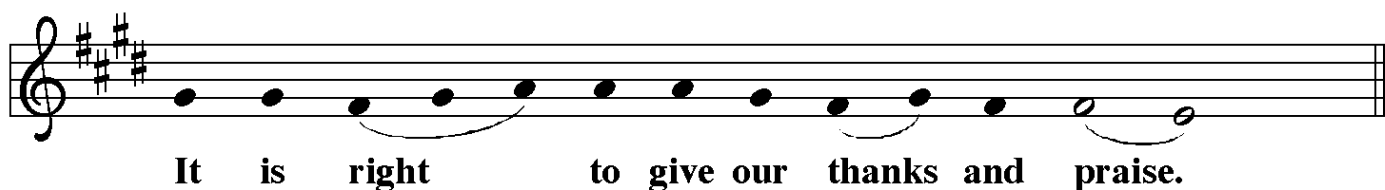
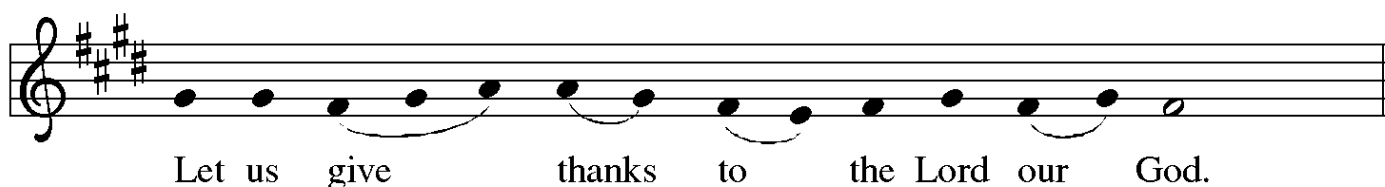
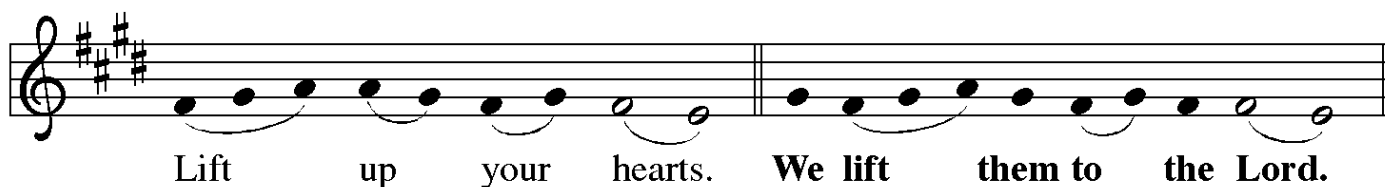
When invited to commune, peel off the bottom tab to eat the bread; peel off the top tab to drink the wine. The waste can go in the paper bag found in each pew.

### **By intinction:**

When prompted by the ushers, come down the center aisle to kneel at the railing; please sanitize your hands.

Receive a wafer in your hands. Dip it in a chalice, either wine or grape juice, before partaking. Use the outside aisle to return to your seat.

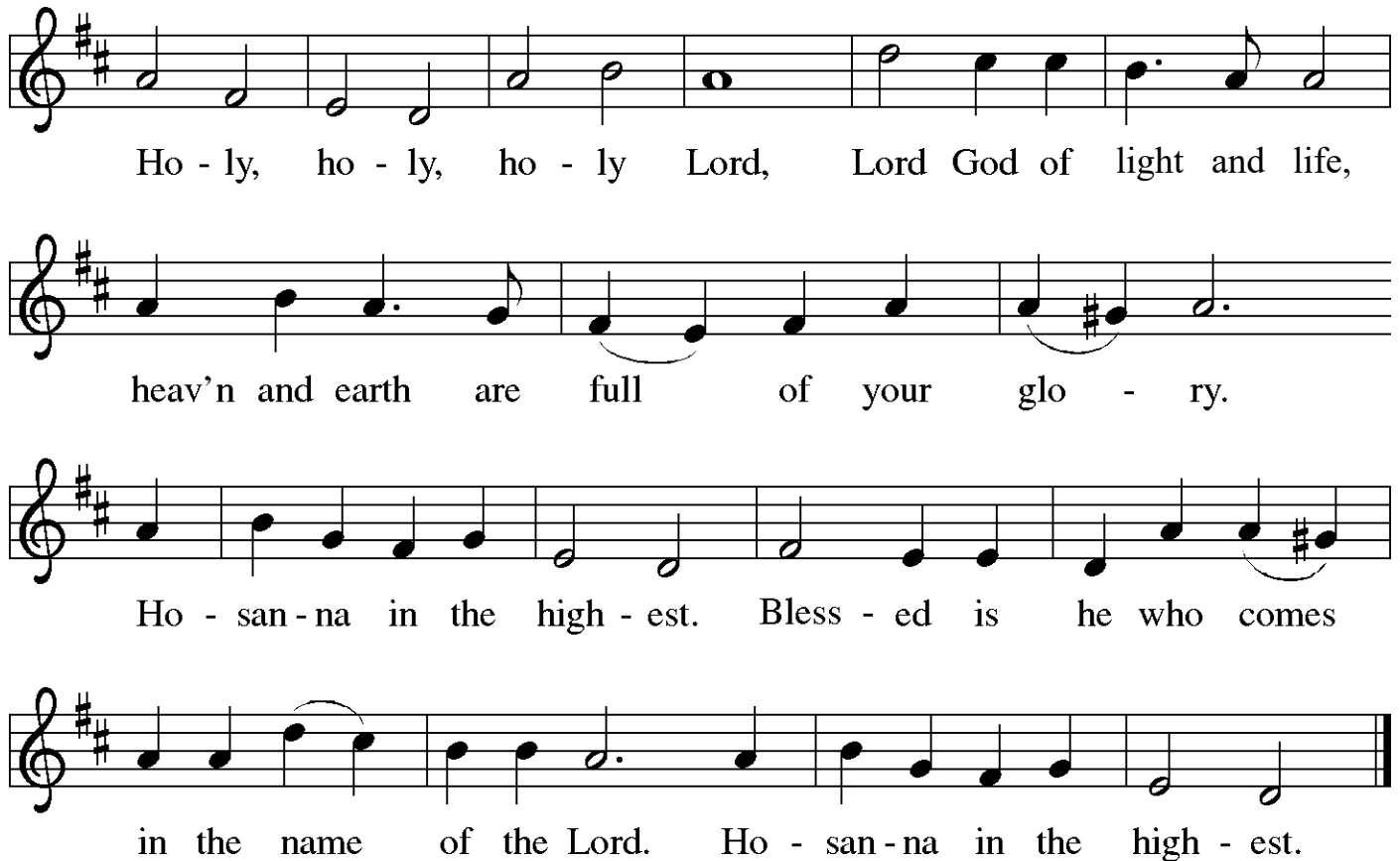
## ↑ The Great Thanksgiving





**P**: It is our duty and delight . . . . . and join their unending hymn:

↑ **Sanctus**



Ho - ly, ho - ly, ho - ly Lord, Lord God of light and life,  
heav'n and earth are full of your glo - ry.  
Ho - san - na in the high - est. Bless - ed is he who comes  
in the name of the Lord. Ho - san - na in the high - est.

↑ **Words of Institution**

↑ **Lord's Prayer**

**P**: Lord, as we prepare ourselves for this holy act of sharing,  
let us pray as Jesus teaches:

**C**: **Our Father in heaven,  
hallowed be your name,  
your kingdom come, your will be done,  
on earth as in heaven.  
Give us today our daily bread  
and forgive us our sins  
as we forgive those who sin against us.  
Save us from the time of trial and deliver us from evil.  
For the kingdom, the power, and the glory are yours,  
now and forever.  
Amen.**

## Invitation to the Table

**P:** Come and taste the joy of God!

## Agnus Dei



Lamb of God, you take a-way the sin of the world; have mer-cy on



us. Lamb of God, you take a-way the sin of the world; have



mer-cy on us. Lamb of God, you take a-way the



sin of the world; grant us peace, grant us peace.

## Distribution Hymn

*This hymn from the Taizé Community will be sung several times. You are invited to sing harmony or melody.*

*Eat This Bread*

**ELW 472**

## Post Communion Prayer

**P:** Lord Jesus,  
in this simple meal you have set a banquet.  
Sustain us on the journey,  
strengthen us to care for the least of your beloved children,  
and give us glad and generous hearts  
as we meet you on the way.

**G:** Amen.

## Announcements

↑ **Benediction**

**P**: The Lord bless you and keep you.  
The Lord make his face to shine on you  
and be gracious to you.

The Lord look upon you with favor and ☩ grant you peace.

**G**: **Amen.**

↑ **Sending Hymn**

*O Christ, What Can It Mean for Us*  
**ELW 431**

↑ **Dismissal**

**A**: Go in peace. Be Christ to your neighbor.

**G**: **Thanks be to God.**

**Postlude**

*O Christ, What Can it Mean for Us* (ALL SAINTS NEW),  
Healey Willan

## ANNOUNCEMENTS —NOVEMBER 26, 2023

**WELCOME!** Please fill out a CONNECT card if you are visiting us today, if you wish to receive our emails or newsletter, or if you wish the pastor to contact you. PRAY cards may be used for prayer requests. Place cards in the offering plate.

**WE WELCOME MARTHA FREITAG** as our guest organist. Martha earned her Bachelor of Music in organ performance from Lawrence University Conservatory of Music, Appleton, WI, and a Master of Arts in musicology from UNC Chapel Hill, NC, where she studied harpsichord. She grew up in the Lutheran tradition and over the years has served various denominations as a church musician. She keeps a busy schedule as a free-lance organist and choir director in the Seattle area.

**OUR WORSHIP CONTINUES** after the service with fellowship. Today's coffee hour is no-host; special thanks to any who share treats or make coffee!

**THANKOFFERINGS:** Our annual offering to WELCA, Women of the ELCA, runs through today. Pick up a blue envelope in the narthex to donate.

### **FORUM @9 – CONFLICT IN GAZA:**

#### **Media Narratives and Misinformation**

The fast-paced news cycle coupled with demands from social media to “pick a side” have confused audiences trying to follow the events in Israel and Gaza. This talk aims to provide context behind popular circulating narratives and tools for detecting misinformation.

*Sara Shaban is an assistant professor of journalism and communication at Seattle Pacific University. Shaban is a critical/cultural researcher focused on the intersections between media, social movements, and geopolitics in the Middle East. In 2022, she published her first book Iranian Feminism and Transnational Ethics in Media Discourse, a copy of which will be raffled at the forum.*

### **THIS WEEK'S CALENDAR**

#### **Sunday, November 26**

Worship	8:00 AM
Forum( <i>Conf. Rm</i> )	9:00 AM
Worship	10:30 AM

#### **Monday**

Food Addicts in Recovery ( <i>FH</i> )	7:00 PM
--	---------

#### **Tuesday (office closed)**

Community Lunch on Capitol Hill (@All Pilgrims CC)	8:30 AM–1:00 PM
QALCW Circle ( <i>Zoom</i> )	7:00 PM

#### **Wednesday**

*(office begins shorter hours, 2-6 PM)*

Sewing & Service ( <i>downstairs</i> )	10:00 AM
AA Counterbalance ( <i>FH</i> )	7:30 PM

#### **Thursday**

TGI-Thursday (@ <i>Thai Fusion</i> )	6:00 PM
Choir Practice ( <i>Music Room</i> )	7:00 PM

#### **Saturday**

Saturday Seekers ( <i>Conf. Room</i> )	9:30 AM
Alanon / Alateen ( <i>upstairs</i> )	10:30 AM
AA Shanty Trudgers ( <i>upstairs</i> )	7:00 PM

#### **Sunday, December 3 – Advent Begins!**

Worship	8:00 AM
Advent Celebration ( <i>FH</i> )	9:00 AM
Forum( <i>Conf. Rm</i> )	9:00 AM
Worship	10:30 AM
Q&A w/Pastor Dan ( <i>FH</i> )	<i>after worship</i>

## **OFFICE HOURS – Office Closed Tuesday; Shorter Hours are Coming**

**Barb Bash** will be taking time away on Tuesday, November 28, and the church office will be closed on that day. Starting Wednesday, Barb will be in the office four hours each workday. **New church office hours will be 2 PM to 6 PM Tuesday through Friday.** Barb will work from home in the mornings. This schedule will last at least until the end of 2023.

**Pastor Dan** is available Tuesday, Wednesday, Thursday, Saturday, and Sunday. Feel free to contact him at [pastor@queenannelutheran.org](mailto:pastor@queenannelutheran.org) if you wish to make an appointment to see him. If an immediate response is needed, text Pastor Dan at 253.230.9695.

**Kyle Haugen** will be in the office Wednesday and Thursday afternoon and evening.

**NOTE: QALCW CIRCLE's November Bible Study has been rescheduled to this Tuesday, November 28. ( Zoom only)**

**"THANK GOD IT'S THURSDAY!" – THIS WEEK, THURSDAY, NOV. 30**

**All are invited to meet for dinner @ 6 PM at Thai Fusion** at 15 Nickerson St.

No agenda, just a chance to socialize with others in the church.

(Note: *a previous invite to Zeek's on Wednesday has given way to this gathering*)

**UPCOMING RIDWELL SPECIAL COLLECTIONS – start gathering!**

Bring by **December 3:** Usable CDs, DVDs, and video games

Bring by **December 17:** Usable (unopened) toiletries

Details are in our November *Quill*

**WARM CLOTHING DRIVE:** Men's jackets, sweaters, socks, gloves and hats are welcome. Donations will be collected in the narthex on an ongoing basis and will be delivered to Queen Anne Helpline to help our neighbors keep warm this winter.

**DONATIONS NEEDED:** Sewing and Service is looking for **LARGE/XLARGE MEN'S COTTON T-SHIRTS** to be "up-cycled" into diapers for LWR baby kits. Please leave donations in the narthex.

**FINAL TUESDAY:** Thanks to all those who have been helping prepare & serve lunches at **COMMUNITY LUNCH ON CAPITOL HILL**. What we give, we get right back in gratitude! Contact Jim Margard if you'd like to serve this week.

**MANY THANKS** to those who provided Thanksgiving groceries for seniors to Queen Anne Helpline. Thanks also to Barbara Koziol, who knitted 230 warm hats, and to Jim Margard, who brought them to Rita Zawaideh of SCM Medical Missions, to be given to immigrant and refugee families in Spokane and King County.

**THIS SATURDAY, DECEMBER 2:**

**Got Questions? • Spiritual but not Religious?** Join the **SATURDAY MORNING SEEKERS** on the first Saturday of each month in the Conference Room. Light breakfast provided, 9:30-10 AM; discussion 10-11 AM. All are welcome. No faith required.

## **FORUM DECEMBER 3—Update on the Afghan and Ukrainian Refugees**

*From 9 to 10:00 AM in the Conference Room*

What services does Lutheran Community Services provide for refugees coming from war-torn countries such as Afghanistan and Ukraine, and how might we help their work? Join us in the Conference Room to find out.

## **SUNDAY, DECEMBER 3 – Q&A SESSION WITH PASTOR DAN**

*After 10:30 worship in the Fellowship Hall; Zoom link available*

Pastor Dan has been accepted as a visiting scholar to do research at Princeton Theological Seminary next fall (September 1 –November 30, 2024). Join him and Pastor Mark Griffith, who recently returned from a two-year sabbatical as the pastor of Holden Village, for conversation on what this means for our congregation and to answer whatever questions you have. Food will be provided.

## **SUNDAY, DECEMBER 3— ADVENT CELEBRATION: Fellowship, Food & Crafts**

### **Advent Is Coming!**



*From 9 to 10:15 AM in the Fellowship Hall*

Welcome Advent with traditional holiday treats such as lefse, krumkake, and potato sausage in the Fellowship Hall from 9 to 10:15. Craft tables will also be set up for children and the young-at-heart. Come join the fun!

## **WEDNESDAYS, DECEMBER 6, 13, and 20—**

*Noon Worship in the Chapel*

Pastor Dan will offer a contemplative service in the chapel with prayer, a hymn, and a brief homily on a psalm. Please join us this Advent.

## **NEW IN DECEMBER: REQUEST—OR OFFER—A RIDE TO CHURCH**

Keenly aware that there are members of our congregation who would love to be with us for Sunday worship but lack transportation to and from church, the Visitation Team is piloting a ride-share program the entire congregation can participate in that will roll out in December. Details are in the November *Quill*.

**Do you, or someone you know, need a ride to church?** Call the church office by noon on the Thursday before to make the request. Each Friday, Barb will send a stand-alone email out to the congregation with the subject line “RIDES REQUESTED” listing any requests and including a link to the riders’ contact info in Sign-Up Genius.

**Are you available to give a ride?** This is a volunteer opportunity that requires **no commitment beyond a one-Sunday-at-a-time response**. Volunteer drivers use the emailed link to access the Sign-Up Genius page; sign up, and use the information there to contact the rider directly to make arrangements for that Sunday. If you are planning to be at church anyway and can provide a ride to someone else, please consider fulfilling a ride request.

# Mark Your Calendar – December Events!

## **Sunday, December 3:**

Forum – Lutheran Community Services NW 9:00 AM  
Advent Celebration – Fellowship, Food, & Crafts 9:00–10:15 AM  
Q&A Session with Pastor Dan after 10:30 worship

## **Wednesdays, December 6, 13, 20:**

Advent chapel service NOON

## **Friday, December 8:**

Youth gift-wrap at Compass Housing 5:30–7:30 PM

## **Sunday, December 10:**

Forum – *Topic TBD* 9:00 AM  
Greening of the Church after 10:30 worship  
Project Phoenix event at QALC: 2:00–4:00 PM  
*Extreme Makeover: Gnome Edition!*  
Caroling at QALC 4:00–6:00 PM

## **Saturday, December 16:**

Youth cookie-baking 10:00 AM –1:00 PM

## **Week of December 16-23:**

Delivering Poinsettias volunteer choice

## **Sunday, December 17:**

Forum – CORE Tanzania 9:00–10:00 AM

## **Sunday, December 24:**

4th Sunday in Advent worship with a Hymn-sing 10:30 AM  
Christmas Eve worship – Family-friendly 5:30 PM  
Christmas Eve worship – Candlelight Eucharist 11:00 PM

## **Monday, December 25:**

Christmas Day worship 10:30 AM



## Poinsettias for One Another

This year, your donated poinsettias will be given as gifts to elderly, ill, or isolated members of our congregation. Some of the poinsettias will also decorate our altar this season.

If you would like to contribute one or more plants, please fill out the form below. Detach it and leave it in the offering plate or return it to the church office before Tuesday, December 19. You may also email us your information. Cost per plant is **\$12.50**. Checks should be made out to QALC and marked "poinsettias." If you are giving the poinsettias in honor or memory of someone, please print that name very clearly. Commemorations will be noted in the church bulletins for the Christmas Eve and Christmas Day services.

---

Your name (please print clearly!) \_\_\_\_\_

Number of plants \_\_\_\_\_

In memory of, OR  In honor of: \_\_\_\_\_

\_\_\_\_\_

\_\_\_\_\_

\_\_\_\_\_

\_\_\_\_\_

Attached is my check for \$ \_\_\_\_\_