

SECOND SUNDAY AFTER EPIPHANY

January 14, 2024

10:30 AM



↑ = *Stand* **C**: *Congregation* **A**: *Worship Assistant* **P**: *Presiding Minister*

Hymns may be found in the red hymnals in the pews. • Large-print hymns are available in the narthex as you enter. • Quiet Bags with books and soft toys, or Doodle Bags with markers are available in the narthex for children.

Prelude *Dearest Jesus, at Your Word* (LIEBSTER JESU, WIR SIND HIER)
J.S. Bach

Welcome

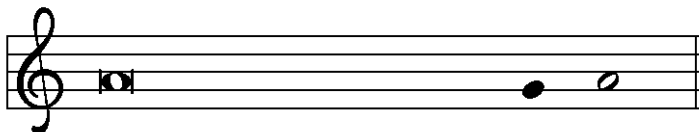
↑ **Gathering Hymn** *Dearest Jesus, at Your Word*
ELW 520

↑ **Greeting**

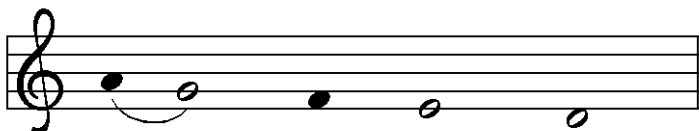
P: The grace of our Lord Jesus Christ, the love of God,
and the communion of the Holy Spirit be with you all.

C And also with you.

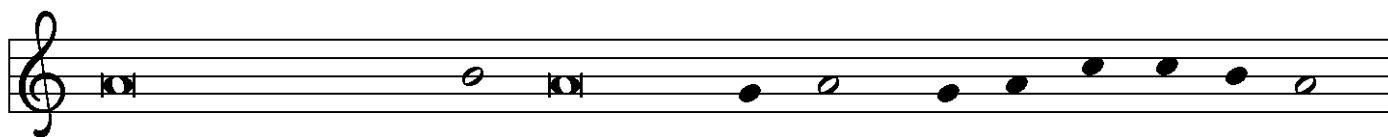
↑ **Kyrie**



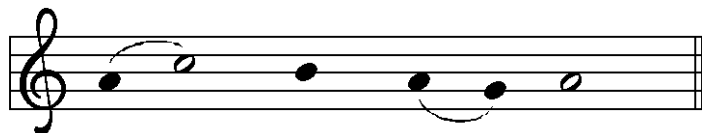
In peace, let us pray to the Lord.



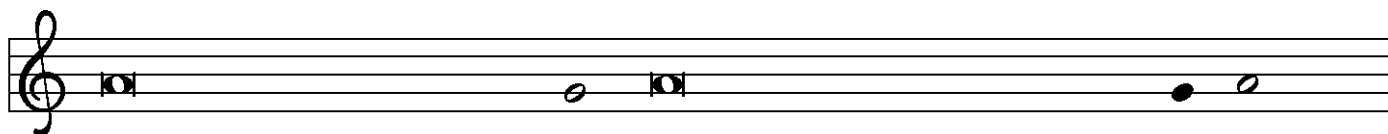
Lord, have mer - cy.



For the peace from a-bove, and for our sal - vation, let us pray to the Lord.



Lord, have mer - cy.



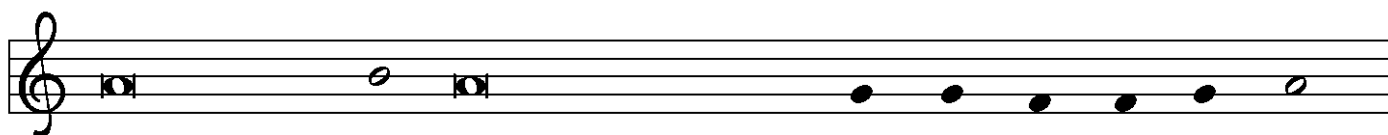
For the peace of the whole world, for the well-being of the church of God,



and for the unity of all, let us pray to the Lord.



Lord, have mer - cy.

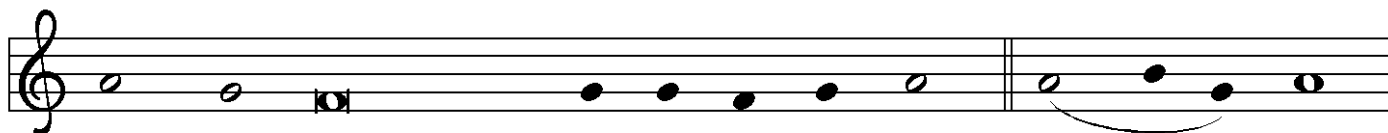


For this holy house, and for all who offer here their wor-ship and praise,



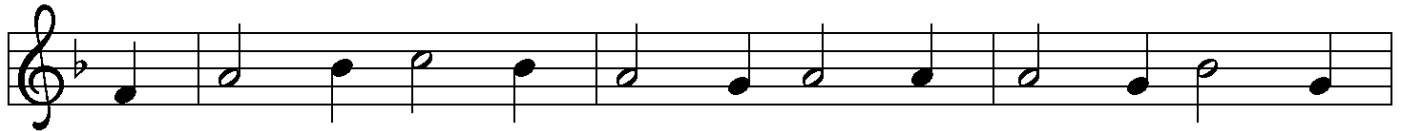
let us pray to the Lord.

Lord have mer - cy.



Help, save, comfort, and de - fend us, gra-cious Lord. A - men.

↑Hymn of Praise



1 All glo - ry be to God on high, and peace to earth be
2 Lord Je - sus Christ, the on - ly Son of God, cre - a - tion's
3 To you a - lone, O God, we cry, the Ho - ly One we



giv - en! Let an - gels sing, let all re - ply; good -
au - thor, O Lamb of God, your death a - lone takes
name you; for you a - lone are God most high, one



will breaks forth from heav - en! Lord God Al - might - y,
sin a - way for - ev - er. Stretch out your arms to
liv - ing God we claim you: we wor - ship you, Lord



heav - en's king, we wor - ship you, our thanks we sing, we
ev - 'ry land, and, as you reign at God's right hand, re -
Je - sus Christ, with God the Spir - it ev - er blest, in



praise you for your glo - ry.
ceive our prayer; have mer - cy.
God the Fa - ther's glo - ry. A - - - men.

↑ **Prayer of the Day**

P: The Lord be with you.

C **And also with you.**

P: Let us pray.

Thank you, Jesus, for the countless blessings and benefits you give.
May we know you more clearly,
love you more dearly,
and follow you more nearly,
day by day praising you,
with the Father and the Holy Spirit, one God, now and forever.

C **Amen.**

Children's Message

Pastor Dan

First Reading

1 Samuel 3:1-10 [11-20]

A: Word of God, Word of life.

C: Thanks be to God.

Second Reading

1 Corinthians 6:12-20

A: Word of God, Word of life.

C: Thanks be to God.

↑ **Gospel Acclamation**



Al - le - lu - ia. Lord, to whom shall we go?



You have the words of e - ter - nal life. Al - le - lu - ia.

↑ **The Holy Gospel**

John 1:43-51

P: The Gospel according to St. John, the first chapter.

C: **Glory to you, O Lord.**

After the reading

P: The Gospel of the Lord.

C: **Praise to you, O Christ.**

Sermon

Pastor Dan Peterson

↑ **Hymn of the Day**

Take My Life, That I May Be

ELW, Hymn 685

↑ **Apostles' Creed**

C: **I believe in God, the Father almighty,
creator of heaven and earth.**

**I believe in Jesus Christ, God's only Son, our Lord,
who was conceived by the Holy Spirit,
born of the virgin Mary,
suffered under Pontius Pilate,
was crucified, died, and was buried;
he descended to the dead.**

**On the third day he rose again; he ascended into heaven,
he is seated at the right hand of the Father,
and he will come to judge
the living and the dead.**

**I believe in the Holy Spirit,
the holy catholic church,
the communion of saints,
the forgiveness of sins,
the resurrection of the body,
and the life everlasting.**

Amen.



The Apostles' Creed emphasizes the full humanity of Christ (e.g., he was born, suffered, and died) in response to one of the earliest heresies, namely, the view that Christ only "appeared" to be human. Why? Detractors believed that the Spirit of God, which is good, could not dwell in a material or physical body, which is evil. When we profess the Apostles' Creed, following Jewish tradition, we insist otherwise. The world God made is good! With great joy and without contradiction, therefore, we can say with John 1:14 that "the Word became flesh and dwelled among us."

Prayers of the Church (*please be seated or kneel*)

A: . . . Lord, in your mercy.

C: Hear our prayer.

↑ **Sharing of Peace**

P: The peace of Christ be with you always.

C: And also with you.

Holy Communion – All people who seek a taste of the new and forgiven life in Jesus Christ are welcome to receive the sacrament. We confess and believe that Christ, who fills all things, comes to us in a special way through the Sacrament of Bread and Wine and that by sharing in this meal, we share in Christ's real presence among us.

The ministration of the Sacrament is given in two ways:

In the pew:

You may commune in the pews with individual elements. These are available in the narthex as you enter.

When invited to commune, peel off the bottom tab to eat the bread; peel off the top tab to drink the wine. The waste can go in the paper bag found in each pew.

By intinction:

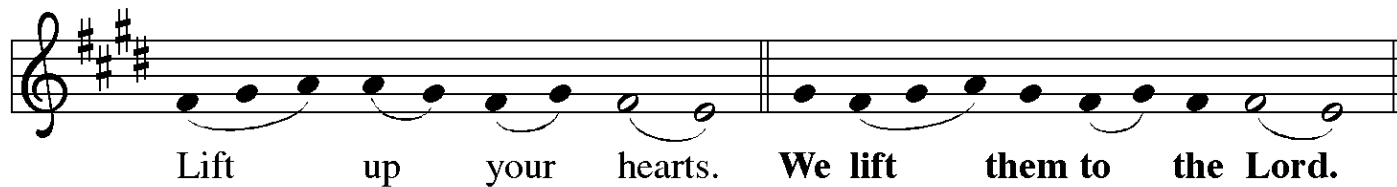
When prompted by the ushers, come down the center aisle to kneel at the railing; please sanitize your hands.

Receive a wafer in your hands. Dip it in a chalice, either wine or grape juice, before partaking. Use the outside aisle to return to your seat.

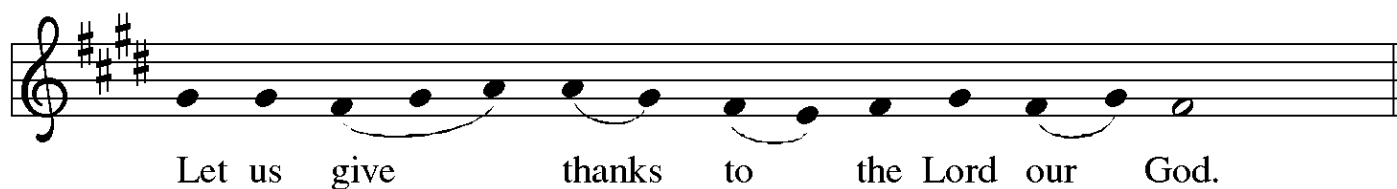
↑ The Great Thanksgiving



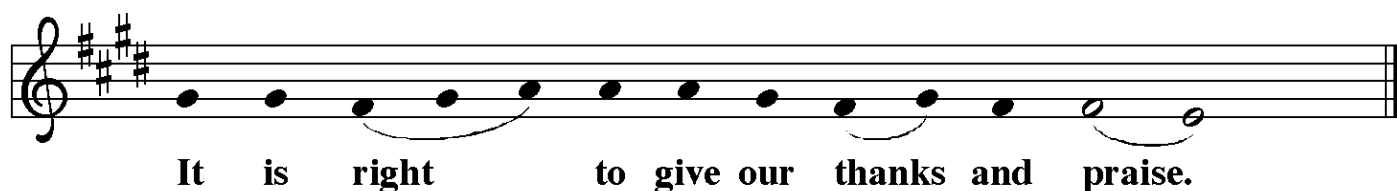
The Lord be with you. And al - so with you.



Lift up your hearts. We lift them to the Lord.

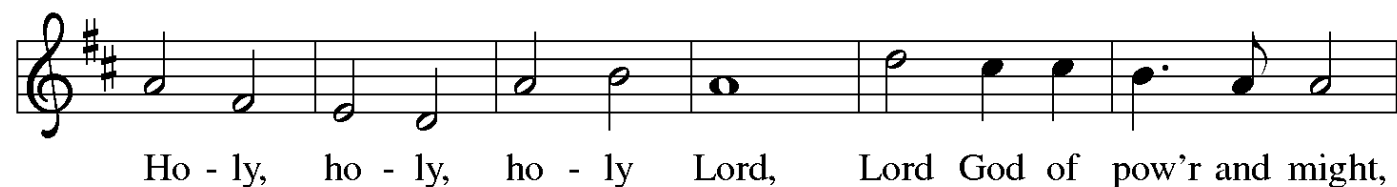


Let us give thanks to the Lord our God.

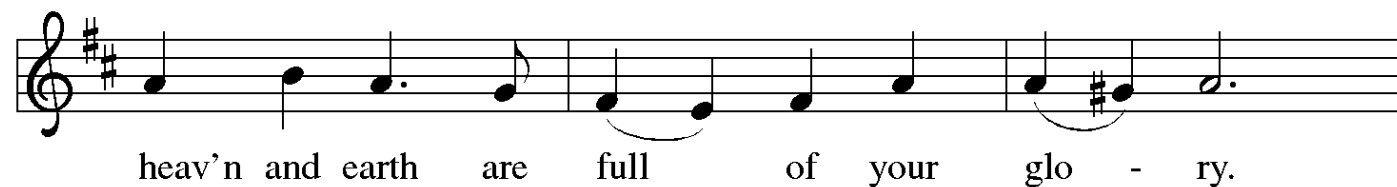


It is right to give our thanks and praise.

P: It is indeed right, our duty and our joy . . .
. . . praise your name and join their unending hymn:



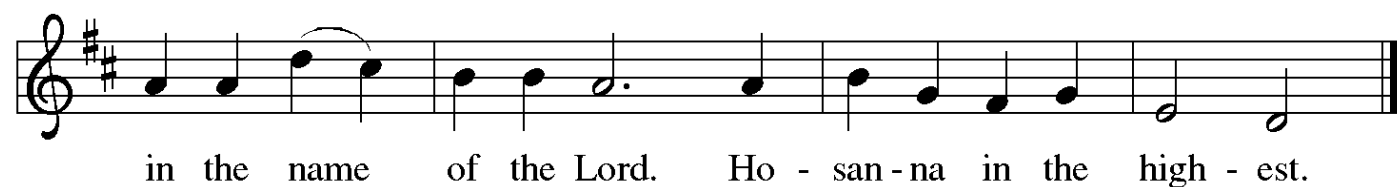
Ho - ly, ho - ly, ho - ly Lord, Lord God of pow'r and might,



heav'n and earth are full of your glo - ry.



Ho - san - na in the high - est. Bless - ed is he who comes



in the name of the Lord. Ho - san - na in the high - est.

↑ Words of Institution

↑ The Lord's Prayer

P: Lord, remember us in your kingdom and teach us to pray:

C: **Our Father in heaven, hallowed be your name,
your kingdom come, your will be done,
on earth as in heaven.**

Give us today our daily bread.

Forgive us our sins

as we forgive those who sin against us.

Save us from the time of trial and deliver us from evil.

**For the kingdom, the power, and the glory are yours,
now and forever. Amen.**

↑ Invitation to the Table

P: At Jesus' table, heaven and earth are joined as one.
Come and see.

Agnus Dei



Lamb of God, you take a-way the sin of the world; have mer-cy on



us. Lamb of God, you take a-way the sin of the world; have



mer-cy on us. Lamb of God, you take a-way the



sin of the world; grant us peace, grant us peace.

↑ **Distribution Hymn**

Let Us Break Bread Together
ELW 471

↑ **Post-Communion Prayer**

P: Giver of every gift,
Christ's body is our food, and we are Christ's body.
Raise us to life by your power
for the benefit of all and to your glory,
now and forever.

C: Amen.

Announcements

↑ **Benediction**

P: God who names you,
Christ who claims you,
and the Holy Spirit who dwells in you,
✠ bless you and remain with you always.

C: Amen.

↑ **Sending Hymn**

Will You Come and Follow Me
ELW 798

↑ **Dismissal**

A: Go in peace and serve the Lord.

C: Thanks be to God!

Postlude

O Jesus Christ, True Light (O JESU CHRISTE, WAHRES LICHT)
settings by Gaël Liardon and Helmut Walcha

ANNOUNCEMENTS — JANUARY 14, 2024

WELCOME! Please fill out a CONNECT card if you are visiting us today, if you wish to receive our emails or newsletter, or if you want the pastor to contact you. PRAY cards may be used for prayer requests. Place cards in the offering plate.

WE WELCOME MARTHA FREITAG as our guest organist through January 21. Martha earned her Bachelor of Music in organ performance from Lawrence University Conservatory of Music, Appleton, WI, and a Master of Arts in musicology from UNC Chapel Hill, NC, where she studied harpsichord. She grew up in the Lutheran tradition and over the years has served various denominations as a church musician. She keeps a busy schedule as a free-lance organist and choir director in the Seattle area.

OUR WORSHIP CONTINUES after the service with fellowship. Thank you, Lisa Ondrejcek for hosting today.

JANUARY/ FEBRUARY FORUMS:

WOMEN OF THE REFORMATION —

Discussions about the Protestant Reformation often highlight the role of important male figures — Luther, Calvin, Zwingli, etc. However, the tenets of the Reformation brought changes for women. These sessions will explore the roles of women in the early Protestant Church, as well as highlight the important contributions of specific women, such as Katie Luther (Katharina von Bora) and Katharina Schutz.

This three-part Forum series begins **Sunday, January 21** in conversation with **Bishop Shelley Bryan Wee**. Two Sunday Forums on February 4 and 11 will be led by **Dr. Lynn Hofstad**.

Q&A WITH THE FINANCE COMMITTEE —

On **Sunday, January 28** during our 9 to 10 Forum time, the Finance Committee will answer any questions you have regarding the financial state of our church, and about the proposed Guidelines for Expenditure for 2024, which we will be voting on later that day at our Annual Meeting. Our Annual Report will be made available to members ahead of that day.

THIS WEEK'S CALENDAR

Sunday, January 14

Worship	8:00 AM
Worship	10:30 AM

Monday

Food Addicts in Recovery (FH) 7:00 PM

Tuesday

QALCW Circle (Zoom.) 7:00 PM

Wednesday

Sewing & Service (FH)	10:00 AM
AA Counterbalance (FH)	7:30 PM

Saturday

Audit Committee (Conf. Rm)	8:00 AM
Alanon (upstairs)	10:30 AM
AA Shanty Trudgers (upstairs)	7:00 PM

Sunday, January 21

Bishop Shelley Bryan Wee, preaching

Worship	8:00 AM
Forum	9:00 AM
Worship	10:30 AM
Organ Concert — Wyatt Smith	4:00 PM

SUNDAY, JANUARY 28 – SAVE THE DATE!

We will be holding our **ANNUAL CONGREGATIONAL MEETING** on Sunday, January 28. It will be held in-person after our 10:30 worship. The purpose of the annual meeting of the congregation is to review and celebrate the previous year's accomplishments; to elect officers and delegates for the coming year; and to hear and vote on next year's guidelines for expenditures and any other proposals requiring the majority approval of the membership. A quorum of members is required to accomplish our tasks, and of course we hope you will be able to attend. Lunch will be served!



KITCHEN CURIOUS? The party is always in the kitchen, and we have a really cool kitchen as part of the Fellowship Hall. This is your opportunity to join us and get comfortable about using the kitchen appliances for any future event. Please come to our kitchen orientation, organization and cleansing event on Saturday January 27th . Stop by any time after 8:00 AM; we

will be there until 11:00 AM. In addition to appliance orientation, we will also be boxing up some excess items for Goodwill and cleaning dusty surfaces. This is timely, as our annual meeting is the next day in the Fellowship Hall and lunch will be served. Please sign up, or let Candy Mathes, Mark Dibble or Barb know you are joining. Thank you!

“THANK GOD IT’S THURSDAY!” – THURSDAY, JANUARY 25

All are invited to meet for dinner @ 5:30 PM at Thai Fusion at 15 Nickerson St. No agenda, just a chance to socialize with others in the church.

REQUEST – OR OFFER – A RIDE TO CHURCH

Do you, or someone you know, need a ride to church? Call the church office by noon on the Thursday before to make the request. Barb will send a stand-alone email out to the congregation with the subject line “RIDES REQUESTED” listing any requests and including a link to the riders’ contact info in Sign-Up Genius.

Are you available to give a ride? This is a volunteer opportunity that requires **no commitment beyond a one-Sunday-at-a-time response**. Volunteer drivers use the emailed link to access the Sign-Up Genius page; sign up, and use the information there to contact the rider directly to make arrangements for that Sunday. If you are planning to be at church anyway and can provide a ride to someone else, please consider fulfilling a ride request.

NEW SIGN-UP TO HELP IN WORSHIP: On the narthex railing, you will find a new sign-up sheet to replace those that used to be on the narthex table. If you are able and willing to serve in worship, please sign up there! Online sign-ups are still available.

Please remember to pick up your **2024 OFFERING ENVELOPES** in the narthex today.

QUEEN ANNE LUTHERAN CHURCH FINE ARTS PRESENTS

DR. WYATT SMITH, organ



with

DR. TRACELYN GESTELAND,
mezzo-soprano

and original paintings on
exhibit by **JON SEALS**



Three art forms converge

to illuminate the church year

through art song, organ solo, and visual art.

SUNDAY, JANUARY 21 • 4:00 PM

QUEEN ANNE LUTHERAN CHURCH

suggested donation: \$20 GENERAL/\$15 SENIOR/STUDENT

or pay as you can

Save the date for this unique collaboration across the mediums of music and visual art! Inspired by the Lutheran chorale tradition, concert organist Wyatt Smith explores the liturgical year with two modern masterworks as the centerpiece of the program:

Liturgy LIVE! is a collection of six pieces for organ by composer Pamela Ruitter-Feenstra based upon Lutheran chorales that span the church year. Inspired by Ruitter-Feenstra's organ compositions, visual artist Jon Seals created six paintings depicting the human condition in relation to each liturgical season—each painting will be exhibited at the concert, near the organ.

Composer Craig Phillips has set poet Bethany Carlson's meditations on each season of the church year as a song cycle, entitled **Six Seasonal Songs**, which will feature Tracelyn Gesteland, mezzo-soprano.