

THIRD SUNDAY AFTER EPIPHANY

January 21, 2024

10:30 AM



↑ = *Stand* **C**: *Congregation* **A**: *Worship Assistant* **P**: *Presiding Minister*

Hymns may be found in the red hymnals in the pews. • Large-print hymns are available in the narthex as you enter. • Quiet Bags with books and soft toys, or Doodle Bags with markers are available in the narthex for children.

Prelude

Chorale Prelude on KUORTANE
Robert Below

Welcome

↑ Gathering Hymn

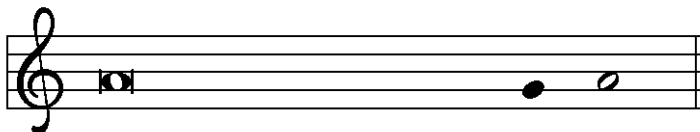
Rise, Shine, You People
ELW 665

↑ Greeting

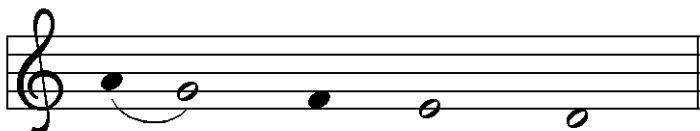
P: The grace of our Lord Jesus Christ, the love of God,
and the communion of the Holy Spirit be with you all.

C And also with you.

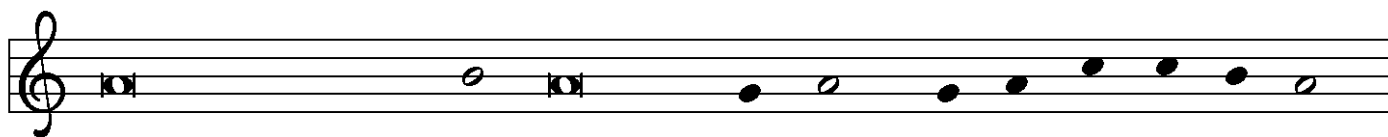
↑ Kyrie



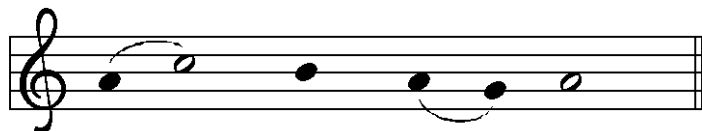
In peace, let us pray to the Lord.



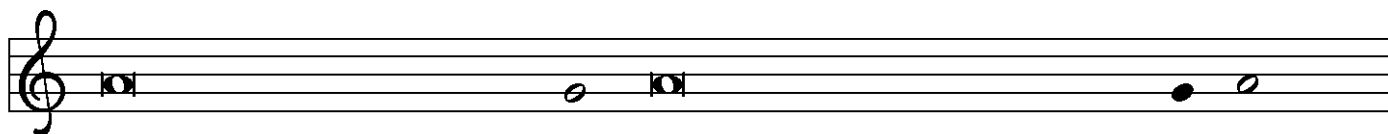
Lord, have mer - cy.



For the peace from a-bove, and for our sal - vation, let us pray to the Lord.



Lord, have mer - cy.



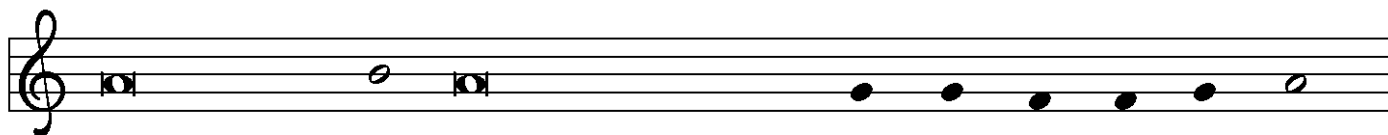
For the peace of the whole world, for the well-being of the church of God,



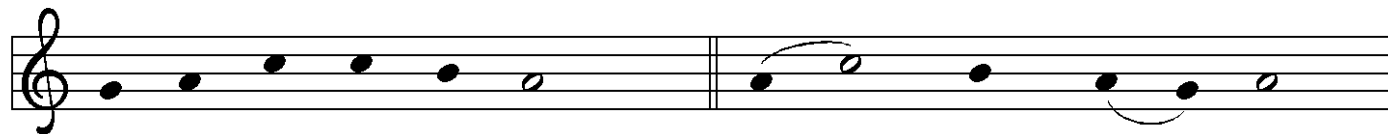
and for the unity of all, let us pray to the Lord.



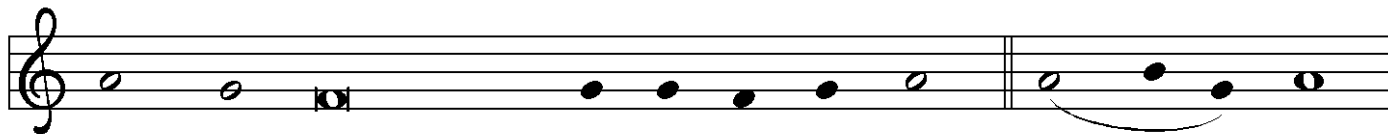
Lord, have mer - cy.



For this holy house, and for all who offer here their wor-ship and praise,

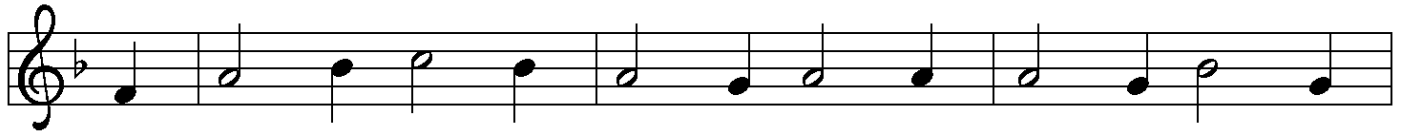


let us pray to the Lord. Lord have mer - cy.



Help, save, comfort, and de - fend us, gra-cious Lord. A - men.

↑Hymn of Praise



1 All glo - ry be to God on high, and peace to earth be
2 Lord Je - sus Christ, the on - ly Son of God, cre - a - tion's
3 To you a - lone, O God, we cry, the Ho - ly One we



giv - en! Let an - gels sing, let all re - ply; good -
au - thor, O Lamb of God, your death a - lone takes
name you; for you a - lone are God most high, one



will breaks forth from heav - en! Lord God Al - might - y,
sin a - way for - ev - er. Stretch out your arms to
liv - ing God we claim you: we wor - ship you, Lord



heav - en's king, we wor - ship you, our thanks we sing, we
ev - 'ry land, and, as you reign at God's right hand, re -
Je - sus Christ, with God the Spir - it ev - er blest, in



praise you for your glo - ry.
ceive our prayer; have mer - cy.
God the Fa - ther's glo - ry. A - - - men.

↑ **Prayer of the Day**

P: The Lord be with you.

C: **And also with you.**

P: Let us pray.

Loving God, by grace alone you call us to freedom
and enable us to love others as you first loved us.

Strengthen us by your Spirit,
and make us worthy of your call,

through Jesus Christ, our Savior and Lord.

C: **Amen.**

Children's Message

Pastor Dan

First Reading

Jonah 3:1-5, 10

A: Word of God, Word of life.

C: **Thanks be to God.**

Second Reading

1 Corinthians 7:29-31

A: Word of God, Word of life.

C: **Thanks be to God.**

↑ **Gospel Acclamation**

Al - le - lu - ia. Lord, to whom shall we go?

You have the words of e - ter - nal life. Al - le - lu - ia.

↑ **The Holy Gospel**

Mark 1:14-20

P: The Gospel according to St. Mark, the first chapter.

G: **Glory to you, O Lord.**

After the reading

P: The Gospel of the Lord.

G: **Praise to you, O Christ.**

Sermon

Bishop Shelley

↑ **Hymn of the Day**

How Clear Is Our Vocation, Lord
ELW, Hymn 580

↑ **Apostles' Creed**

G: **I believe in God, the Father almighty,
creator of heaven and earth.**

**I believe in Jesus Christ, God's only Son, our Lord,
who was conceived by the Holy Spirit,
born of the virgin Mary,
suffered under Pontius Pilate,
was crucified, died, and was buried;
he descended to the dead.**

**On the third day he rose again; he ascended into heaven,
he is seated at the right hand of the Father,
and he will come to judge
the living and the dead.**

**I believe in the Holy Spirit,
the holy catholic church,
the communion of saints,
the forgiveness of sins,
the resurrection of the body,
and the life everlasting.**

Amen.



The Apostles' Creed emphasizes the full humanity of Christ (e.g., he was born, suffered, and died) in response to one of the earliest heresies, namely, the view that Christ only "appeared" to be human. Why? Detractors believed that the Spirit of God, which is good, could not dwell in a material or physical body, which is evil. When we profess the Apostles' Creed, following Jewish tradition, we insist otherwise. The world God made is good! With great joy and without contradiction, therefore, we can say with John 1:14 that "the Word became flesh and dwelled among us."

Prayers of the Church (*please be seated or kneel*)

A: . . . Lord, in your mercy.

C: **Hear our prayer.**

↑ **Sharing of Peace**

P: The peace of Christ be with you always.

C: **And also with you.**

Holy Communion – All people who seek a taste of the new and forgiven life in Jesus Christ are welcome to receive the sacrament. We confess and believe that Christ is truly present in the Sacrament of Bread and Wine and that by sharing in this meal, we share in Christ's risen presence among us.

The ministration of the Sacrament is given in two ways:

In the pew:

You may commune in the pews with individual elements. These are available in the narthex as you enter.

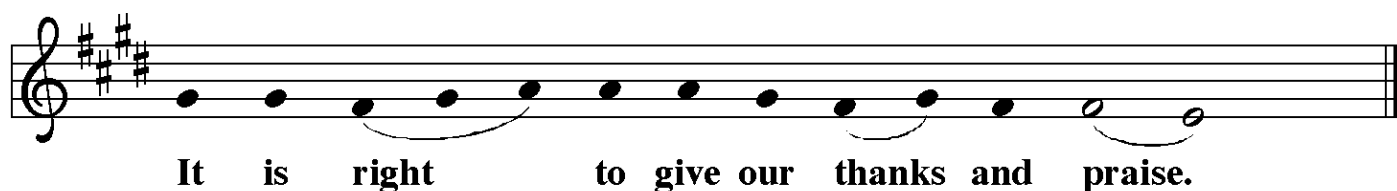
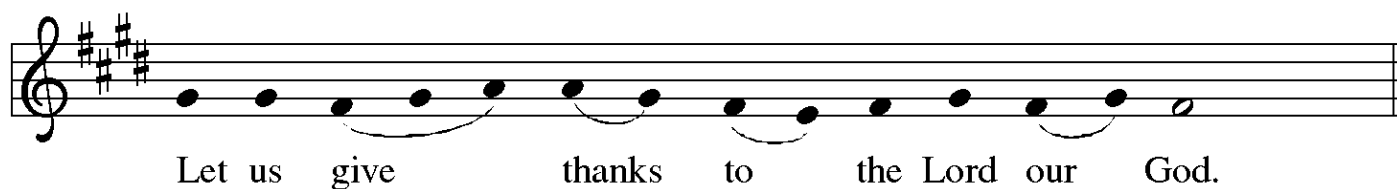
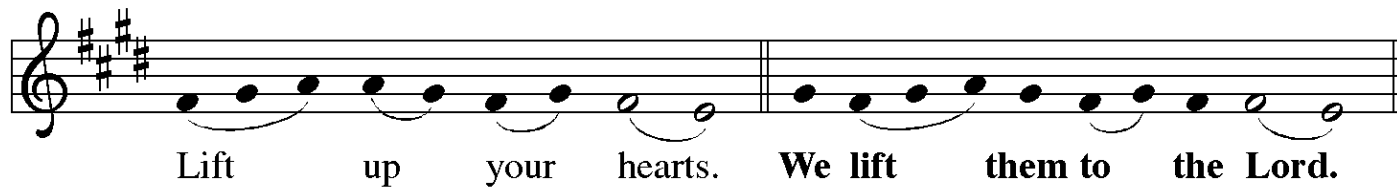
When invited to commune, peel off the bottom tab to eat the bread; peel off the top tab to drink the wine. The waste can go in the paper bag found in each pew.

By intinction:

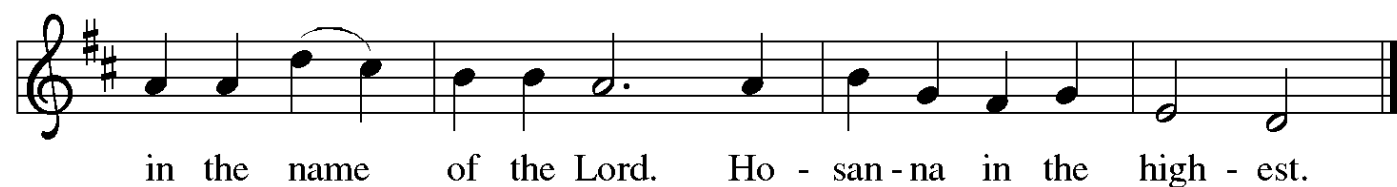
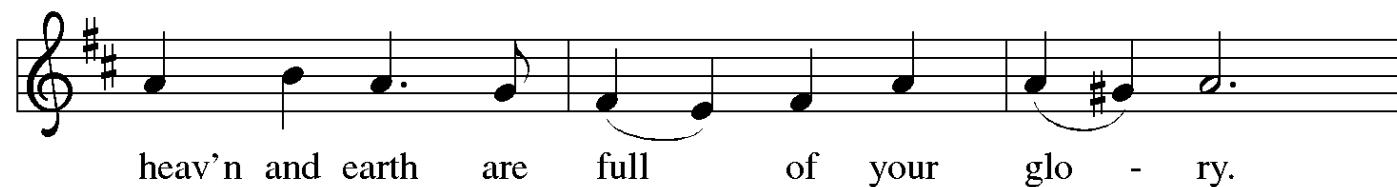
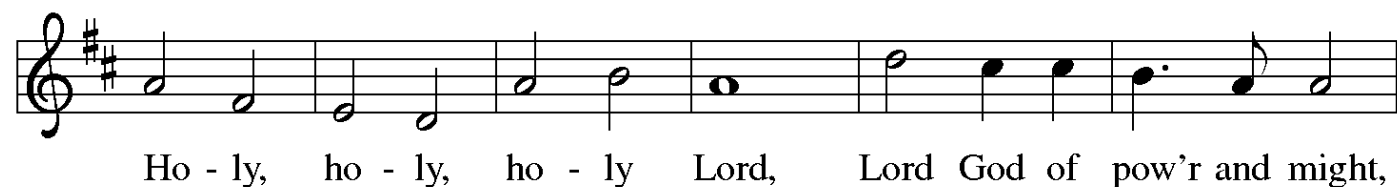
When prompted by the ushers, come down the center aisle to kneel at the railing; please sanitize your hands.

Receive a wafer in your hands. Dip it in a chalice, either wine or grape juice, before partaking. Use the outside aisle to return to your seat.

↑ The Great Thanksgiving



P: It is indeed right, our duty and our joy . . .
. . . praise your name and join their unending hymn:



↑ Words of Institution

↑ The Lord's Prayer

P: Lord, remember us in your kingdom and teach us to pray:

C: **Our Father in heaven, hallowed be your name,
your kingdom come, your will be done,
on earth as in heaven.**

Give us today our daily bread.

Forgive us our sins as we forgive those who sin against us.

Save us from the time of trial and deliver us from evil.

**For the kingdom, the power, and the glory are yours,
now and forever. Amen.**

↑ Invitation to the Table

P: At Jesus' table, heaven and earth are joined as one.
Come and see.

Agnus Dei



Lamb of God, you take a-way the sin of the world; have mer-cy on



us. Lamb of God, you take a-way the sin of the world; have



mer-cy on us. Lamb of God, you take a-way the



sin of the world; grant us peace, grant us peace.

↑ Distribution Hymn

Bread of Life, Our Host and Meal
ELW 464

↑ **Post-Communion Prayer**

P: Giver of every gift,
Christ's body is our food, and we are Christ's body.
Raise us to life by your power
for the benefit of all and to your glory,
now and forever.

C: Amen.

Announcements

↑ **Benediction**

P: God who names you,
Christ who claims you,
and the Holy Spirit who remains in you,
✠ bless you and keep you always.

C: Amen.

↑ **Sending Hymn**
(see next page)

Go to the World
ACS 991

↑ **Dismissal**

A: Go in peace and serve the Lord.

C: Thanks be to God!

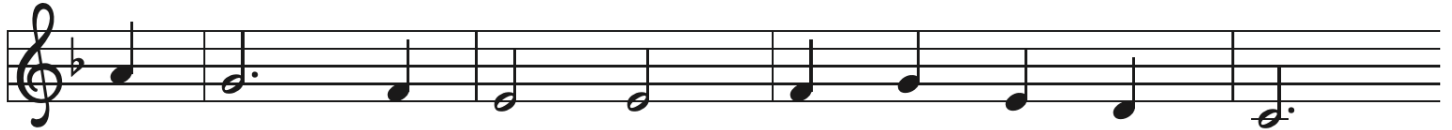
Postlude

Variations on a Moravian Theme (hymn tune: SERVICE)
Margaret V. Sandresky

Go to the World!



1 Go to the world! Go in - to all the earth.
2 Go to the world! Go in - to ev - 'ry place.
3 Go to the world! Go strug - gle, bless, and pray;
4 "Go to the world! Go as the ones I send,



Go preach the cross where Christ re - news life's worth,
Go live the word of God's re - deem - ing grace.
the nights of tears give way to joy - ous day.
for I am with you till the age shall end,



bap - tiz - ing as the sign of our re - birth.
Go seek God's pres - ence in each time and space.
As ser - vant church, you fol - low Christ's own way.
when all the hosts of glo - ry cry, A - men!"



Al - le - lu - ia. Al - le - lu - ia.

Text: Sylvia G. Dunstan, 1955–1993

Music: SINE NOMINE, Ralph Vaughan Williams, 1872–1958

Text © 1991 GIA Publications, Inc., giamusic.com. All rights reserved.

Music © Oxford University Press. All rights reserved.

Duplication in any form prohibited without securing permission from copyright administrator or reporting usage under valid license.

About Today's Music

Today's Prelude is a setting of the Finnish tune KUORTANE/NYLAND from Robert Below's Suite for Organ. in the ELW hymnal (#313) the tune is set to the words "O Lord, Now Let Your Servant." Robert Below (1935-2021) was a composer and professor of music at Lawrence University Conservatory of Music, and was my piano teacher. The postlude is a set of variations on the Moravian hymn "Ye Who Called to Christ's Service Are," composed by Margaret V. Sandresky (b. 1921), professor emeritus of music at Salem College, North Carolina, for the rededication of a restored historic organ at the Moravian Sisters' Home there. The original tune was composed in 1739 by Johan Hille, the cantor of St. George's Church in Glauca, Germany (near Halle), and a friend of J.S. Bach.

ANNOUNCEMENTS — JANUARY 21, 2024

WELCOME! Please fill out a CONNECT card if you are visiting us today, if you wish to receive our emails or newsletter, or if you want the pastor to contact you. PRAY cards may be used for prayer requests. Place cards in the offering plate.

WE WELCOME THE REVEREND SHELLEY M. BRYAN WEE to the pulpit today. Bishop Shelley will also lead today's Forum from 9 to 10.

Born in Springfield, Oregon, Bishop Shelley is a graduate of Pacific Lutheran University (Tacoma, WA) and obtained a Master of Divinity degree from Luther Northwestern Theological Seminary (now Luther Seminary, St. Paul, MN). She has served as an ordained ELCA pastor since 1993, serving several congregations and then as Assistant to the Bishop in the Northwest Washington Synod prior to her election to Bishop in 2019.

WE WELCOME MARTHA FREITAG as our guest organist today. Martha earned her Bachelor of Music in organ performance from Lawrence University Conservatory of Music, Appleton, WI, and a Master of Arts in musicology from UNC Chapel Hill, NC, where she studied harpsichord. She grew up in the Lutheran tradition and over the years has served various denominations as a church musician. She keeps a busy schedule as a free-lance organist and choir director in the Seattle area. Our regular Cantor Kyle Haugen will return to the organ next Sunday.

OUR WORSHIP CONTINUES after the service with fellowship. Thank you, Ingrid Wyszong, for hosting today.

FLOWERS FOR THE ALTAR are provided by Susan Evans today to the glory of God and in celebration of music at QALC.

NEW SIGN-UP TO HELP IN WORSHIP: On the narthex railing, you will find a new sign-up sheet to replace those that used to be on the narthex table. If you are able and willing to serve in worship, please sign up there! Online sign-ups are still available.

BISHOP SHELLEY LEADS OUR FORUM TODAY AT 9 AM: WOMEN OF THE REFORMATION –

Discussions about the Protestant Reformation often highlight the role of important male figures – Luther, Calvin, Zwingli, etc. However, the tenets of the Reformation brought changes for women. In honor of Katie Luther’s birthday (1/29), we will explore the roles of women in the early Lutheran Church, on up to the present day. This three-part Forum series begins **today** in conversation with **Bishop Shelley Bryan Wee**. Two Sunday Forums on February 4 and 11 will be led by **Dr. Lynn Hofstad**.

“THANK GOD IT’S THURSDAY!” – THIS THURSDAY, JANUARY 25
All are invited to meet for dinner @ 5:30 PM at Thai Fusion at 15 Nickerson St.
No agenda, just a chance to socialize with others in the church.



KITCHEN CURIOUS? The party is always in the kitchen, and we have a really cool kitchen as part of the Fellowship Hall. This is your opportunity to join us and get comfortable about using the kitchen appliances for any future event. **Please come to our kitchen orientation, organization and cleaning event this Saturday January 27.** Stop by any time after 8:00 AM; we will be there until 11AM.

In addition to appliance orientation, we will also be boxing up some excess items for Goodwill and cleaning dusty surfaces. This is timely, as our annual meeting lunch will be served the next day. Please sign up, or let Candy Mathes, Mark Dibble or Barb know you are joining. Thank you!

NEXT SUNDAY AT 9 AM: Q&A WITH THE FINANCE COMMITTEE –

On **Sunday, January 28** during our 9 to 10 Forum time, the Finance Committee will answer any questions you have regarding the financial state of our church, and about the proposed Guidelines for Expenditure for 2024, which we will be voting on later that day at our Annual Meeting. Our Annual Report will be made available to members ahead of that day.

ANNUAL MEETING NEXT SUNDAY, JANUARY 28

We will be holding our **ANNUAL CONGREGATIONAL MEETING** on Sunday, January 28. It will be held in-person after our 10:30 worship. The purpose of the annual meeting of the congregation is to review and celebrate the previous year’s accomplishments; to elect officers and delegates for the coming year; and to hear and vote on next year’s guidelines for expenditures and any other proposals requiring the majority approval of the membership. A quorum of members is required to accomplish our tasks, so we hope you will be able to attend. Lunch will be provided.

RIDE REQUESTS FOR NEXT SUNDAY—

Are you available to give a ride?

Two homebound members have asked for rides to attend 10:30 worship and the Annual Meeting next week. If you are planning to be at church and can provide a ride there, back, or both,, please consider fulfilling a ride request. Volunteer drivers use the link in our church emails to access the Sign-Up Genius page. Sign up and use the information posted there to contact the rider directly to make arrangements.

THE END OF LIFE:

A Multi-Faith Conversation

What is your attitude toward the end of life? How do you approach it? How does your faith inform your perspective, and what about the faith of our neighbors?

Mark your calendars for a first-of-its-kind Wednesday Lenten series! Beginning on Feb. 21 at 6:00 PM, members of Ballard First Lutheran (BFL) will join us here at Queen Anne Lutheran for soup-and-supper in our Fellowship Hall. Dr. Beatrice Lawrence of Seattle University will offer a brief talk after the meal on how people of the Jewish faith approach the end of life.

The following week, QALC is invited to join BFL at *their* church to discuss Christian attitudes toward the end of life, including the option of cremation.

In the remaining weeks, we will (tentatively) hear from Muslim and Native American perspectives, alternating location between QALC and BFL. The series will conclude here on March 20 with a roundtable discussion among any who wish to participate.

Please join us! All are welcome.

THIS WEEK'S CALENDAR

Sunday, January 21

Bishop Shelley Bryan Wee, preaching

Worship 8:00 AM

Forum 9:00 AM

Worship 10:30 AM

Organ Concert – Wyatt Smith 4:00 PM

Monday

Food Addicts in Recovery (FH) 7:00 PM

Wednesday

Sewing & Service (FH) 10:00 AM

AA Counterbalance (FH) 7:30 PM

Saturday

FH Kitchen Party (FH) 8:00 AM

Alanon (*upstairs*) 10:30 AM

AA Shanty Trudgers (*upstairs*) 7:00 PM

Sunday, January 28

Worship 8:00 AM

Forum 9:00 AM

Worship 10:30 AM

Annual Meeting (FH) *after worship*

REGULAR, AUTOMATIC GIVING IS A GOOD GIFT!

Please consider enrolling in QALC's "Simply Giving" EFT program.

This provides a simple, hassle-free and secure way for you to make automatic donations to QALC from your bank account.

To enroll,

pick up a form from the narthex railing, or use the QR Code here for complete info.



PROJECT PHOENIX WELCOMES MADDIE HAYDEN! She will be serving as the new Youth Activity Coordinator for Project Phoenix. Maddie writes:



“I recently graduated from Seattle Pacific University with a Bachelor of Arts in Politics, Philosophy, and Economics, and am currently pursuing a Masters in Teaching. I have been working with youth for the last 6 years as a swim coach and swim instructor at Garfield High School, Excel Swim Club, and Aqua Club Swim Club.

I also grew up attending youth group and have very fond memories of my time there. I am excited to help plan events for Project Phoenix, and hope to help the students create fond memories of their own.”

– *Maddie Hayden* (she/her/hers)
maddie@projectphoenixseattle.org

**YOUTH ARE INVITED TO
PROJECT PHOENIX EVENT
@ BALLARD FIRST, SUN. FEB. 4** 



PROJECT PHOENIX PRESENTS:
**MINUTE -
TO - WIN - IT
CHAMPIONSHIP**

**FEBRUARY
4, 2024** | **4:00-6:00 PM**
Ballard First Lutheran Church
2006 NW 65th ST

Join us for an epic game night filled with fun challenges, laughs, and your great friends. Plus a hot cocoa bar!

WIN A GRAND PRIZE!

**A CALL FOR LAY MINISTRY LEADERS
TO FORM A LOCAL ECUMENICAL QUEEN ANNE HILL GROUP**

Greetings from your neighbors at Queen Anne United Methodist Church! Our congregation's Lay Leader, **James Potts**, is seeking to form a **group of laity from the various churches on the Hill who are interested in ecumenical partnership and crafting shared ministries**. If you serve in the leadership of Queen Anne Lutheran or lead a ministry group, please reach out to him at cjames.potts@gmail.com or email the QAUMC at office@qaumc.org. Ideally the group will include 1-2 people from each church.

QUEEN ANNE LUTHERAN CHURCH FINE ARTS PRESENTS

DR. WYATT SMITH, organ



with
CASSANDRA WILLOCK, soprano
and original paintings
on exhibit by **JON SEALS**



Three art forms converge

to illuminate the church year

through art song, organ solo, and visual art.

SUNDAY, JANUARY 21 • 4:00 PM

QUEEN ANNE LUTHERAN CHURCH
2400 8TH AVE WEST, SEATTLE, WA 98119
queenannelutheran.org

suggested donation: \$20 GENERAL/\$15 SENIOR/STUDENT

or pay as you can

Save the date for this unique collaboration across the mediums of music and visual art!

Inspired by the Lutheran chorale tradition, concert organist Wyatt Smith explores the liturgical year with two modern masterworks as the centerpiece of the program:

Liturgy LIVE! is a collection of six pieces for organ by composer Pamela Ruiters-Feenstra based upon Lutheran chorales that span the church year. Inspired by Ruiters-Feenstra's organ compositions, visual artist Jon Seals created six paintings depicting the human condition in relation to each liturgical season—each painting will be exhibited at the concert, near the organ.

Composer Craig Phillips has set poet Bethany Carlson's meditations on each season of the church year as a song cycle, entitled ***Six Seasonal Songs***, featuring Cassandra Willock, soprano.