

FOURTH SUNDAY AFTER EPIPHANY

January 28, 2024

10:30 AM



↑ = *Stand* **C**: *Congregation* **A**: *Worship Assistant* **P**: *Presiding Minister*

Hymns may be found in the red hymnals in the pews. • Large-print hymns are available in the narthex as you enter. • Quiet Bags with books and soft toys, or Doodle Bags with markers are available in the narthex for children.

Prelude

Welcome

↑ Gathering Hymn

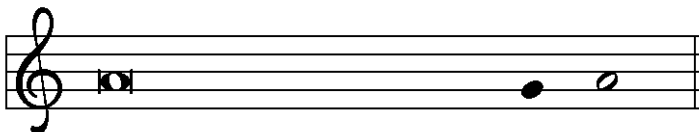
Joyful, Joyful, We Adore Thee
ELW 836

↑ Greeting

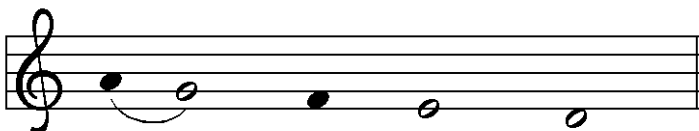
P: The grace of our Lord Jesus Christ, the love of God,
and the communion of the Holy Spirit be with you all.

C And also with you.

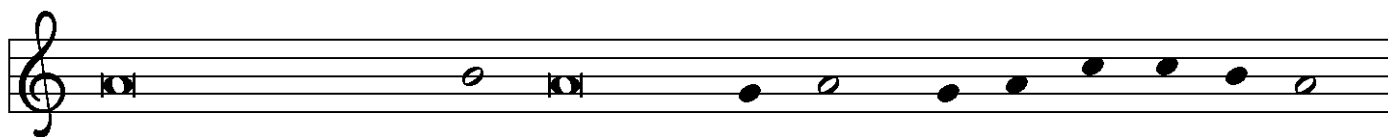
↑ Kyrie



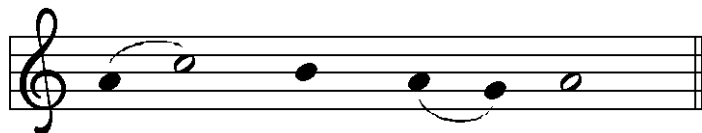
In peace, let us pray to the Lord.



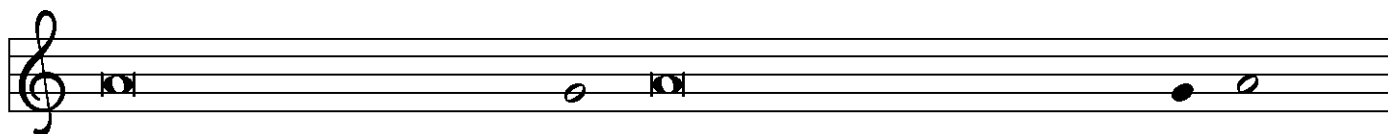
Lord, have mer - cy.



For the peace from a-bove, and for our sal - vation, let us pray to the Lord.



Lord, have mer - cy.



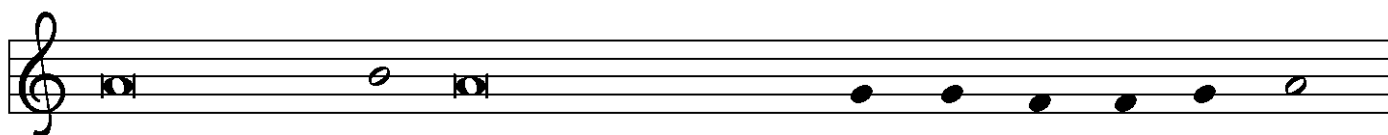
For the peace of the whole world, for the well-being of the church of God,



and for the unity of all, let us pray to the Lord.



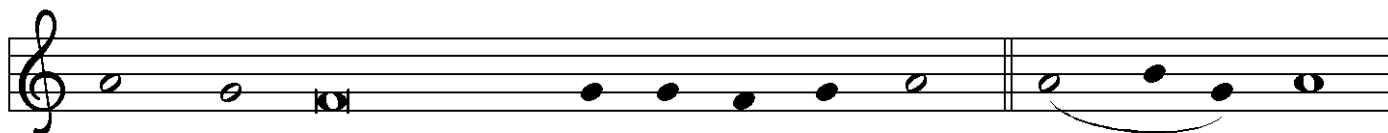
Lord, have mer - cy.



For this holy house, and for all who offer here their wor-ship and praise,

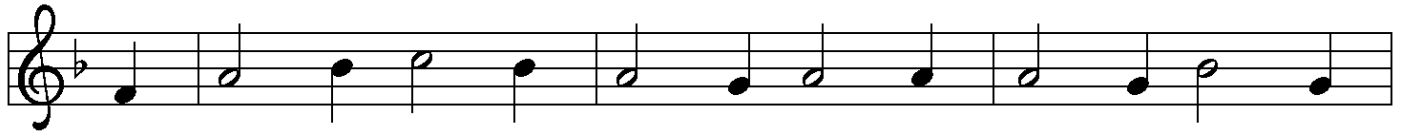


let us pray to the Lord. Lord have mer - cy.



Help, save, comfort, and de - fend us, gra-cious Lord. A - men.

↑Hymn of Praise



1 All glo - ry be to God on high, and peace to earth be
2 Lord Je - sus Christ, the on - ly Son of God, cre - a - tion's
3 To you a - lone, O God, we cry, the Ho - ly One we



giv - en! Let an - gels sing, let all re - ply; good -
au - thor, O Lamb of God, your death a - lone takes
name you; for you a - lone are God most high, one



will breaks forth from heav - en! Lord God Al - might - y,
sin a - way for - ev - er. Stretch out your arms to
liv - ing God we claim you: we wor - ship you, Lord



heav - en's king, we wor - ship you, our thanks we sing, we
ev - 'ry land, and, as you reign at God's right hand, re -
Je - sus Christ, with God the Spir - it ev - er blest, in



praise you for your glo - ry.
ceive our prayer; have mer - cy.
God the Fa - ther's glo - ry. A - - - men.

↑ **Prayer of the Day**

P: The Lord be with you.

C: **And also with you.**

P: Let us pray.

Compassionate God, the whole universe
continuously expresses your radiant presence.
Bring wholeness to all that is broken
and speak truth to us in our confusion,
that all creation will see and know your Son,
from whom are all things and for whom we exist,
Jesus Christ, our Savior and Lord.

C: **Amen.**

Children's Message

Pastor Dan

First Reading

Deuteronomy 18:15-20

A: Word of God, Word of life.

C: **Thanks be to God.**

Second Reading

1 Corinthians 8:1-13

A: Word of God, Word of life.

C: **Thanks be to God.**

↑ **Gospel Acclamation**



Al - le - lu - ia. Lord, to whom shall we go?



You have the words of e - ter - nal life. Al - le - lu - ia.

↑ **The Holy Gospel**

Mark 1:21-28

P: The Gospel according to St. Mark, the first chapter.

G: **Glory to you, O Lord.**

After the reading

P: The Gospel of the Lord.

G: **Praise to you, O Christ.**

Sermon

Is the Demonic a Distraction?

Pastor Dan

↑ **Hymn of the Day**

There Is a Balm in Gilead

ELW 614

↑ **Apostles' Creed**

G: **I believe in God, the Father almighty,
creator of heaven and earth.**

**I believe in Jesus Christ, God's only Son, our Lord,
who was conceived by the Holy Spirit,
born of the virgin Mary,
suffered under Pontius Pilate,
was crucified, died, and was buried;
he descended to the dead.**

**On the third day he rose again; he ascended into heaven,
he is seated at the right hand of the Father,
and he will come to judge
the living and the dead.**

**I believe in the Holy Spirit,
the holy catholic church,
the communion of saints,
the forgiveness of sins,
the resurrection of the body,
and the life everlasting.**

Amen.



The Apostles' Creed emphasizes the full humanity of Christ (e.g., he was born, suffered, and died) in response to one of the earliest heresies, namely, the view that Christ only "appeared" to be human. Why? Detractors believed that the Spirit of God, which is good, could not dwell in a material or physical body, which is evil. When we profess the Apostles' Creed, following Jewish tradition, we insist otherwise. The world God made is good! With great joy and without contradiction, therefore, we can say with John 1:14 that "the Word became flesh and dwelled among us."

Prayers of the Church (*please be seated or kneel*)

A: . . . Lord, in your mercy.

C: **Hear our prayer.**

↑ **Sharing of Peace**

P: The peace of Christ be with you always.

C: **And also with you.**

Holy Communion – All people who seek a taste of the new and forgiven life in Jesus Christ are welcome to receive the sacrament. We confess and believe that Christ is truly present in the Sacrament of Bread and Wine and that by sharing in this meal, we share in Christ's risen presence among us.

The ministration of the Sacrament is given in two ways:

In the pew:

You may commune in the pews with individual elements. These are available in the narthex as you enter.

When invited to commune, peel off the bottom tab to eat the bread; peel off the top tab to drink the wine. The waste can go in the paper bag found in each pew.

By intinction:

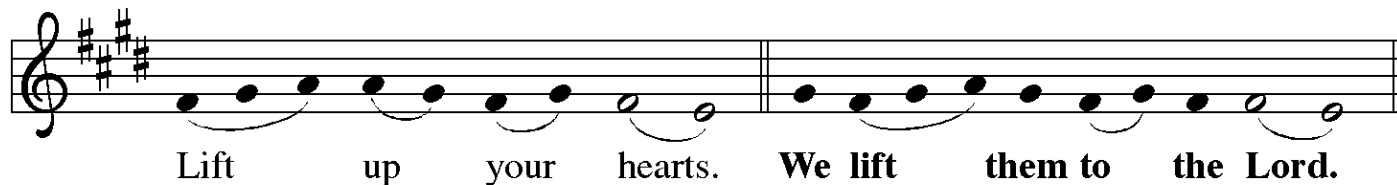
When prompted by the ushers, come down the center aisle to kneel at the railing; please sanitize your hands.

Receive a wafer in your hands. Dip it in a chalice, either wine or grape juice, before partaking. Use the outside aisle to return to your seat.

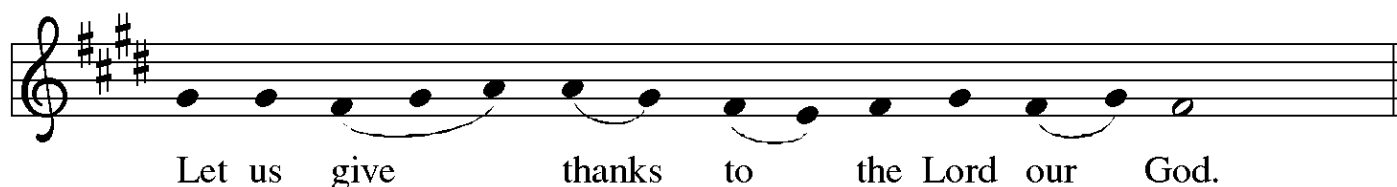
↑ The Great Thanksgiving



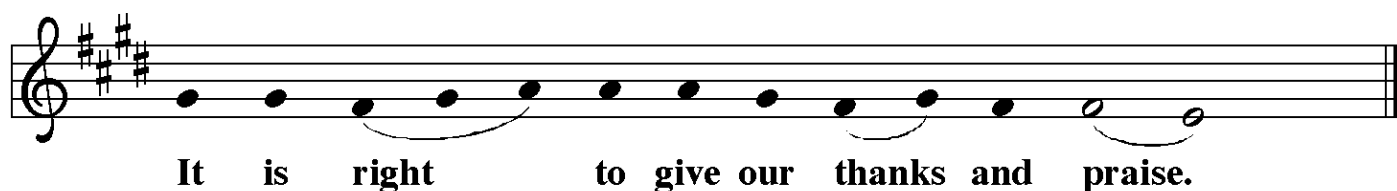
The Lord be with you. And al - so with you.



Lift up your hearts. We lift them to the Lord.

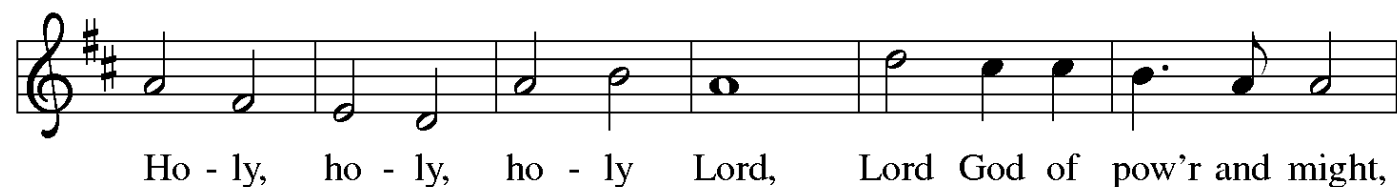


Let us give thanks to the Lord our God.

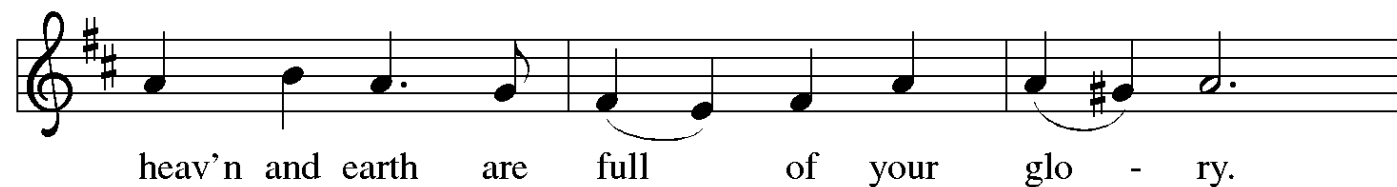


It is right to give our thanks and praise.

P: It is indeed right, our duty and our joy . . .
. . . praise your name and join their unending hymn:



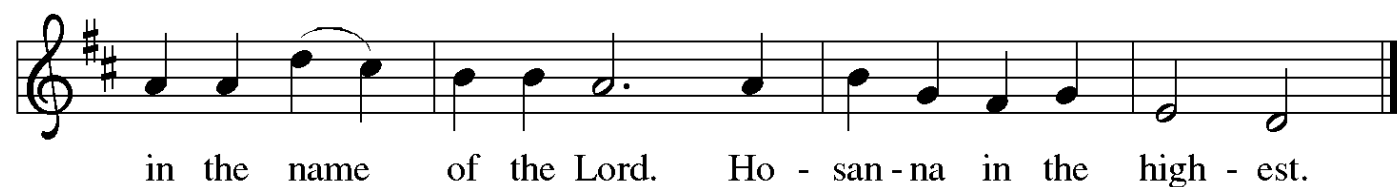
Ho - ly, ho - ly, ho - ly Lord, Lord God of pow'r and might,



heav'n and earth are full of your glo - ry.



Ho - san - na in the high - est. Bless - ed is he who comes



in the name of the Lord. Ho - san - na in the high - est.

↑ Words of Institution

↑ The Lord's Prayer

P: Lord, remember us in your kingdom and teach us to pray:

C: **Our Father in heaven, hallowed be your name,
your kingdom come, your will be done,
on earth as in heaven.**

Give us today our daily bread.

Forgive us our sins as we forgive those who sin against us.

Save us from the time of trial and deliver us from evil.

**For the kingdom, the power, and the glory are yours,
now and forever. Amen.**

↑ Invitation to the Table

P: At Jesus' table, heaven and earth are joined as one.
Come and see.

Agnus Dei



Lamb of God, you take a-way the sin of the world; have mer-cy on



us. Lamb of God, you take a-way the sin of the world; have



mer-cy on us. Lamb of God, you take a-way the



sin of the world; grant us peace, grant us peace.

↑ Distribution Hymn

Come and Fill Our Hearts
ELW 528

↑ Post-Communion Prayer

P: Giver of every gift,
Christ's body is our food, and we are Christ's body.
Raise us to life by your power
for the benefit of all and to your glory,
now and forever.

C: Amen.

Announcements

↑ Benediction

P: God who names you,
Christ who claims you,
and the Holy Spirit who remains in you,
✠ bless you and keep you always.

C: Amen.

↑ Sending Hymn

O Christ, Your Heart, Compassionate
ELW 722

↑ Table Prayer

P: Generous God,
you have made yourself known in Jesus, the light of the world.
As this food and drink give us strength,
so strengthen us by your Spirit,
that, as your baptized heirs,
we may share your light with all the world.
Grant this through Christ our Lord.

C: Amen.

↑ Dismissal

A: Go in peace. Serve the Lord.

C: Thanks be to God.

Postlude

ANNOUNCEMENTS — JANUARY 28, 2024

WELCOME! Please fill out a CONNECT card if you are visiting us today, if you wish to receive our emails or newsletter, or if you want the pastor to contact you. PRAY cards may be used for prayer requests. Place cards in the offering plate.

OUR WORSHIP CONTINUES after the 10:30 service with our **ANNUAL CONGREGATIONAL MEETING**, held in-person in the Fellowship Hall and also via Zoom. Lunch will be provided. The purpose of the annual meeting is to celebrate the previous year's accomplishments; to elect officers and delegates for the coming year; and to hear and vote on next year's guidelines for expenditures. A quorum of members is required to accomplish our tasks, so we hope you will be able to stay. Copies of the Financials and the Annual Report are available in the narthex.

FORUM TODAY:

Q&A with the FINANCE COMMITTEE —

Today at 9, the Finance Committee will answer any questions you have regarding the financial state of our church, and about the proposed Guidelines for Expenditure for 2024, which we will be voting on at our Annual Meeting.

NEW SIGN-UP TO HELP IN WORSHIP: On the narthex railing, you will find a new sign-up sheet to replace those that used to be on the narthex table. If you are able and willing to serve in worship, please sign up there! Online sign-ups are still available.

FORUMS IN FEBRUARY AT 9 AM:

WOMEN OF THE REFORMATION —

Discussions about the Protestant Reformation often highlight the role of important male figures — Luther, Calvin, Zwingli, etc. However, the tenets of the Reformation brought changes for women. In honor of Katie Luther's birthday (1/29), we will explore the roles of women in the early Lutheran Church, on up to the present day. This three-part Forum series began last Sunday in conversation with **Bishop Shelley Bryan Wee** and continue on February 4 and 11 with forums led by **Dr. Lynn Hofstad**.

THIS WEEK'S CALENDAR

Sunday, January 28

Worship	8:00 AM
Forum	9:00 AM
Worship	10:30 AM
Annual Meeting (FH)	<i>after worship</i>

Monday

QA Book Club (<i>narthex</i>)	5:30 PM
Food Addicts in Recovery (FH)	7:00 PM

Wednesday

Sewing & Service (FH)	10:00 AM
YA Bible Study (MM Lounge)	6:30 PM
AA Counterbalance (FH)	7:30 PM

Thursday

Choir Rehearsal (<i>Music Rm</i>)	7:00 PM
-------------------------------------	---------

Saturday

Seattle Seekers (FH)	10:00 AM
Alanon (<i>upstairs</i>)	10:30 AM
AA Shanty Trudgers (<i>upstairs</i>)	7:00 PM

Sunday, February 4

Worship	8:00 AM
Forum	9:00 AM
Worship	10:30 AM

OFFICE & STAFF HOURS RETURN TO NORMAL:

Barb Bash now opens the office from 9 AM to 5:30 PM Tuesday through Friday.

Pastor Dan is available Tuesday through Thursday, Saturday, and Sunday. Feel free to contact him at pastor@queenannelutheran.org if you wish to make an appointment to see him. If an immediate response is needed, text Pastor Dan at 253.230.9695.

Cantor Kyle Haugen returns to the organ today and resumes his regular presence on Wednesday/Thursday afternoons and evenings. Choir rehearsal will be held Thursday, Feb. 1.

LENTEN MID-WEEK SUPPER, DISCUSSION, AND COMPLINE



THE END OF LIFE: A Multi-Faith Conversation

What is your attitude toward the end of life? How do you approach it? How does your faith inform your perspective, and what about the faith of our neighbors?

Mark your calendars for a first-of-its-kind Wednesday Lenten series! **Beginning on Feb. 21 at 6:00 PM**, members of Ballard First Lutheran (BFL) will join us here at Queen Anne Lutheran for soup-and-supper in our Fellowship Hall. Dr. Beatrice Lawrence of Seattle University will offer a brief talk after the meal on how people of the Jewish faith approach the end of life.

The following week, QALC is invited to join BFL at *their* church to discuss Christian attitudes toward the end of life, including the option of cremation.

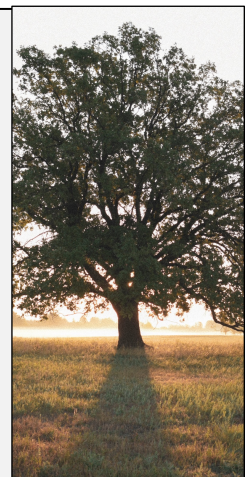
In the remaining weeks, we will (tentatively) hear from Muslim and Native American perspectives, alternating location between QALC and BFL. The series will conclude here on March 20 with a roundtable discussion among any who wish to participate.

Please join us! All are welcome.

SATURDAY, FEBRUARY 3 @ 10:00 AM: SEATTLE SEEKERS

Eager to explore life's big questions? Searching for a sense of belonging?

Join us every month for meaningful discussion and connection over a light breakfast as we delve into life's big questions and the quest for meaning. Our group offers a unique blend of insights, drawing from both secular perspectives and Christian teachings to cultivate a holistic understanding of spirituality, ethics, and purpose. Whether you're a believer, skeptic, or somewhere in between, all are welcome.



PROJECT PHOENIX WELCOMES MADDIE HAYDEN! She will be serving as the new Youth Activity Coordinator for Project Phoenix. Maddie writes:



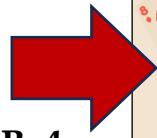
“I recently graduated from Seattle Pacific University with a Bachelor of Arts in Politics, Philosophy, and Economics, and am currently pursuing a Masters in Teaching. I have been working with youth for the last 6 years as a swim coach and swim instructor at Garfield High School, Excel Swim Club, and Aqua Swim Club.

I also grew up attending youth

group and have very fond memories of my time there. I am excited to help plan events for Project Phoenix, and hope to help the students create fond memories of their own.”

— *Maddie Hayden* (she/her/hers)
maddie@projectphoenixseattle.org

YOUTH ARE INVITED TO PROJECT PHOENIX EVENT @ BALLARD FIRST, SUN. FEB. 4



THIS WEDNESDAY, JAN. 31:
We invite young adults and students to join Pastor Dan in the Conference Room for **YOUNG ADULTS BIBLE FELLOWSHIP**. (February date is 2/07.) A light supper is provided at 6 PM, followed by an hour of Bible study. Please invite any young adults or college students who might be interested.

PROJECT PHOENIX PRESENTS:

MINUTE - TO - WIN - IT CHAMPIONSHIP

FEBRUARY 4, 2024 | **4:00-6:00 PM**
Ballard First Lutheran Church
2006 NW 65th ST

Join us for an epic game night filled with fun challenges, laughs, and your great friends. Plus a hot cocoa bar!

WIN A GRAND PRIZE!

A CALL FOR LAY MINISTRY LEADERS TO FORM A LOCAL ECUMENICAL QUEEN ANNE HILL GROUP

Greetings from your neighbors at Queen Anne United Methodist Church! Our congregation's Lay Leader, **James Potts**, is seeking to form a **group of laity from the various churches on the Hill who are interested in ecumenical partnership and crafting shared ministries**. If you serve in the leadership of Queen Anne Lutheran or lead a ministry group, please reach out to him at cjames.potts@gmail.com or email the QAUMC at office@qaumc.org. Ideally the group will include 1-2 people from each church.