

FIRST SUNDAY IN LENT

February 18, 2024

10:30 AM



↑ = *Stand* **C**: *Congregation* **A**: *Worship Assistant* **P**: *Presiding Minister*

Hymns may be found in the red hymnals in the pews. • Large-print hymns are available in the narthex as you enter. • Quiet Bags with books and soft toys, or Doodle Bags with markers are available in the narthex for children.

Prelude

Chorale prelude on O MENSCH BEWEIN DEIN SÜNDE GROSS
J. S. Bach (1685–1750)

This morning we welcome a “pickup choir” that includes guests and newcomers who combine with our QALC Choir. The group met together at 9:30 AM to learn music for this worship service. The music learned this morning will be offered during worship where it works best for the group – at the conclusion of the Prelude and/or at the distribution of Holy Communion.

Introit

Psalm 91:15, 16, 1

They shall call upon me, and I will hearken unto them; I will deliver them, and bring them to honor; with length of days will I satisfy them. You who dwell under the defense of the Most High shall abide under the shadow of the Almighty.

Welcome

↑ **Gathering Hymn**

The Glory of These Forty Days
ELW 320

↑ **Greeting**

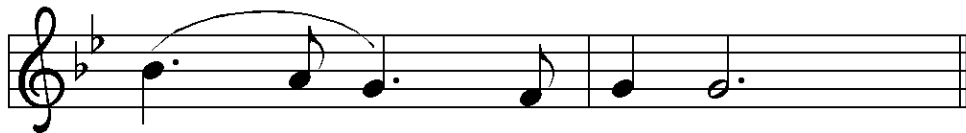
P: The grace of our Lord Jesus Christ, the love of God, and the communion of the Holy Spirit be with you all.

C: Amen.

↑ Kyrie



In peace, let us pray to the Lord.



Lord, have mer - cy.



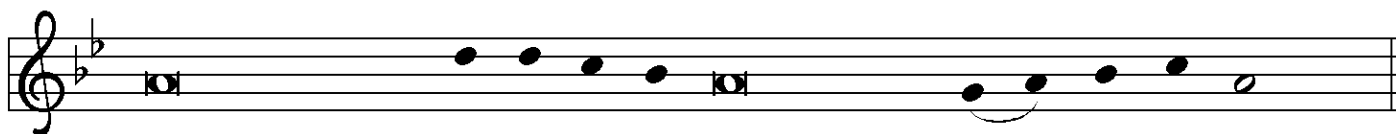
For the peace from a - bove, and for our sal - vation, let us pray to the Lord.



Lord, have mer - cy.



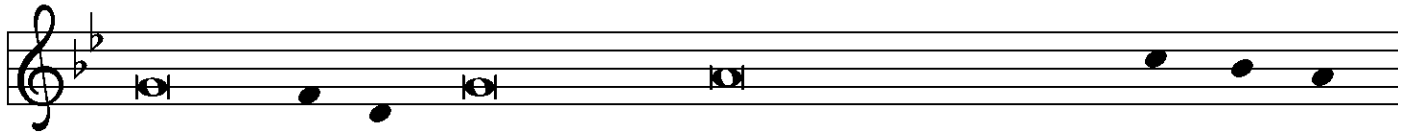
For the peace of the whole world, for the well - being of the church of



God, and for the u - ni - ty of all, let us pray to the Lord.



Lord, have mer - cy.



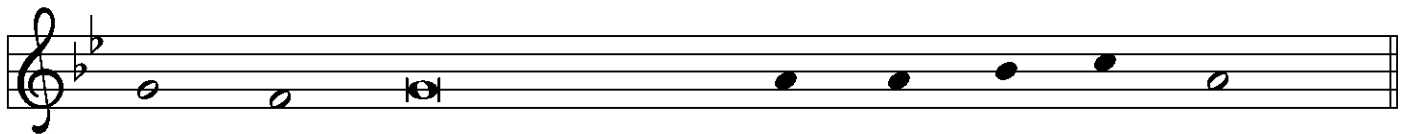
For this ho - ly house, and for all who offer here their wor - ship and



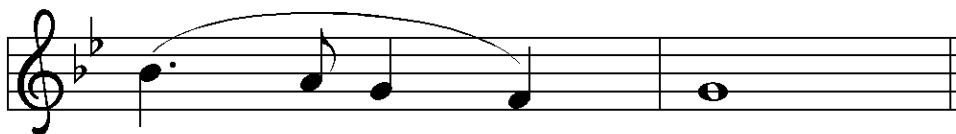
praise, let us pray to the Lord.



Lord, have mer - cy.



Help, save, comfort, and de - fend us, gra - cious Lord.



A - men.

↑Prayer of the Day

P: The Lord be with you.

C: And also with you.

P: Let us pray.

Holy God, in the waters of the flood you saved the chosen,
and in the wilderness of temptation you protected your Son from sin.

Renew us in the gift of baptism.

May your Spirit be with us,

that evil may have no power over us,

through Jesus Christ, our Savior and Lord,

who lives and reigns with you and the Holy Spirit,

one God, now and forever.

C: Amen.

First Reading

Genesis 9:8-17

A: Word of God, Word of life.

G: Thanks be to God.

Psalmody

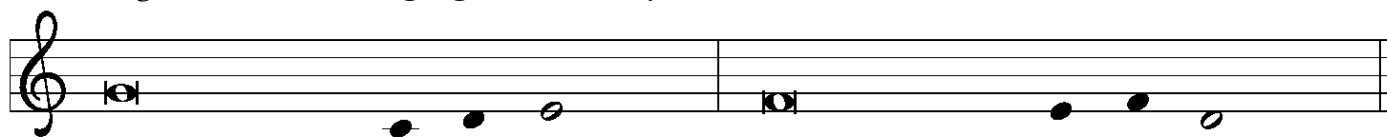
Psalm 25:1-10

Refrain: The choir introduces the refrain; all repeat. Then all repeat the refrain as indicated.



Your paths, O LORD, are steadfast love and faithful - ness.

Choir: regular verses; Congregation: boldface verses.



¹To | you, O Lord,

I lift | up my soul.

²**My God, I put my trust in you; let me not be | put to shame,
nor let my enemies triumph | over me.**

³Let none who look to you be | put to shame;
rather let those be put to shame | who are treacherous.

⁴**Show me your | ways, O Lord,
and teach | me your paths.**

REFRAIN

⁵Lead me in your | truth and teach me,
for you are the God of my salvation;
in you have I trusted all | the day long.

⁶**Remember, O Lord, your compas- | sion and love,
for they are from | everlasting.**

⁷Remember not the sins of my youth and | my transgressions;
remember me according to your steadfast love
and for the sake of your good- | ness, O Lord.

⁸**You are gracious and up- | right, O Lord;
therefore you teach sinners | in your way.**

REFRAIN

⁹You lead the low-ly in justice
and teach the low-ly your way.

¹⁰**All your paths, O Lord, are steadfast | love and faithfulness
to those who keep your covenant and your | testimonies.**

REFRAIN

Second Reading

1 Peter 3:18-22

A: Word of God, Word of life.

G: Thanks be to God.

↑ The Holy Gospel

Mark 1:9-15

P: The Gospel according to St. Mark, the first chapter.

G: Glory to you, O Lord.

↑ Lenten Verse



Re - turn to the Lord, your God, for he is gra - cious and mer - ci - ful,



slow to an - ger, and a - bound - ing in stead - fast love.

After the reading

P: The Gospel of the Lord.

G: Praise to you, O Christ.

Sermon

Temptations in the American Wilderness

Pastor Dan

↑ Hymn of the Day

I Want Jesus to Walk with Me

ELW 325

↑ Apostles' Creed

C: I believe in God, the Father almighty,
creator of heaven and earth.

I believe in Jesus Christ, God's only Son, our Lord,
who was conceived by the Holy Spirit,
born of the virgin Mary,
suffered under Pontius Pilate,
was crucified, died, and was buried;
he descended to the dead.

On the third day he rose again; he ascended into heaven,
he is seated at the right hand of the Father,
and he will come to judge
the living and the dead.

I believe in the Holy Spirit,
the holy catholic church,
the communion of saints,
the forgiveness of sins,
the resurrection of the body,
and the life everlasting.
Amen.



The Apostles' Creed emphasizes the full humanity of Christ (e.g., he was born, suffered, and died) in response to one of the earliest heresies, namely, the view that Christ only "appeared" to be human. Why? Detractors believed that the Spirit of God, which is good, could not dwell in a material or physical body, which is evil. When we profess the Apostles' Creed, following Jewish tradition, we insist otherwise. The world God made is good! With great joy and without contradiction, therefore, we can say with John 1:14 that "the Word became flesh and dwelled among us."

Prayers of the Church *(please be seated or kneel)*

A: . . . Lord, in your mercy.

C: Hear our prayer.

↑ Sharing of Peace

P: The peace of Christ be with you always.

C: And also with you.

Holy Communion – All people who seek a taste of the new and forgiven life in Jesus Christ are welcome to receive the sacrament. We confess and believe that Christ is truly present in the Sacrament of Bread and Wine and that by sharing in this meal, we share in Christ's risen presence among us.

The ministration of the Sacrament is given in two ways:

In the pew:

You may commune in the pews with individual elements. These are available in the narthex as you enter.

When invited to commune, peel off the bottom tab to eat the bread; peel off the top tab to drink the wine. The waste can go in the paper bag found in each pew.

By intinction:

When prompted by the ushers, come down the center aisle to kneel at the railing; please sanitize your hands.

Receive a wafer in your hands. Dip it in a chalice, either wine or grape juice, before partaking. Use the outside aisle to return to your seat.

↑ The Great Thanksgiving

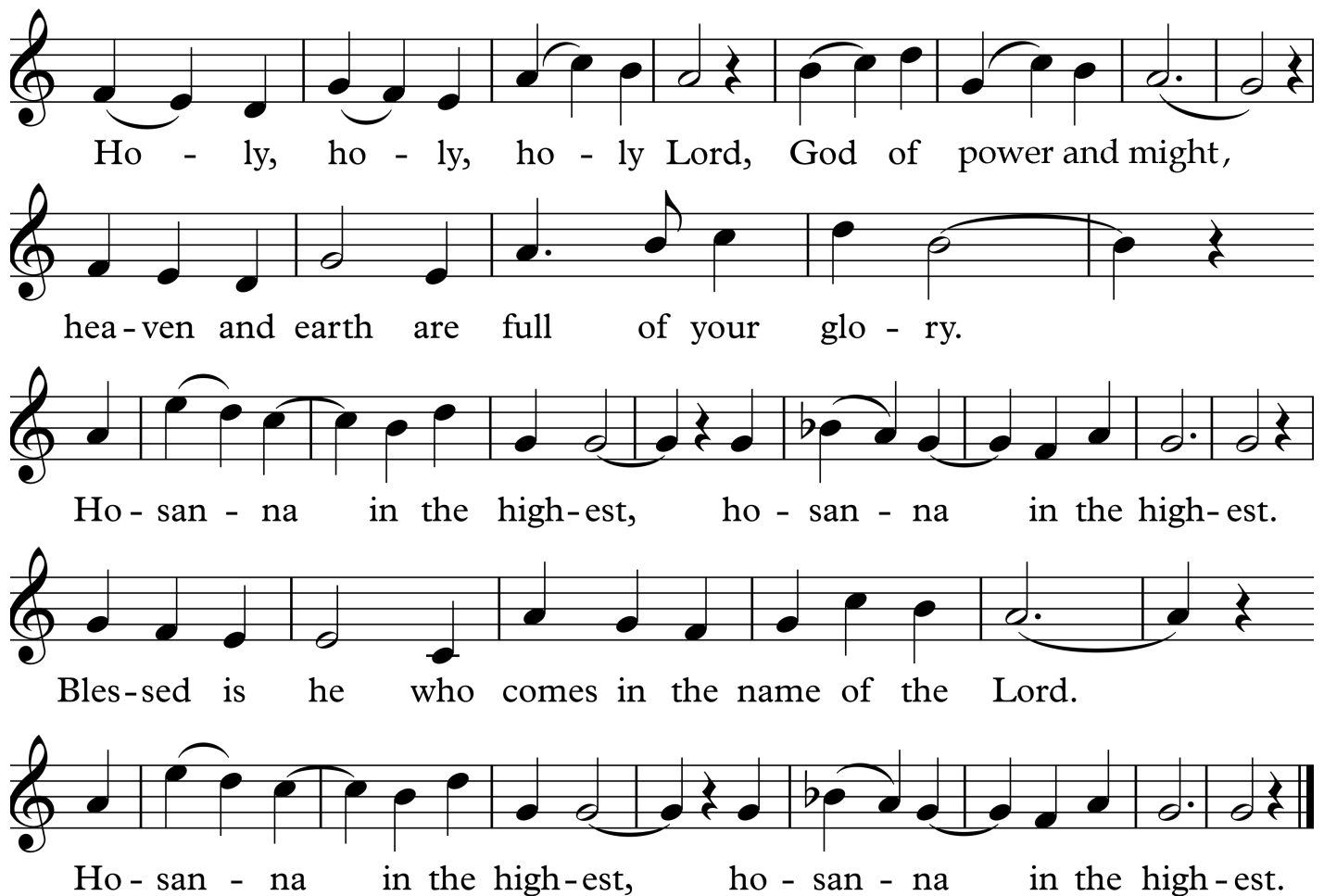
The Lord be with you. And al - so with you.

Lift up your hearts. We lift them to the Lord.

Let us give thanks to the Lord our God.

It is right to give our thanks and praise.

P: It is indeed right, our duty and our joy . . .
. . . praise your name and join their unending hymn:



Ho - ly, ho - ly, ho - ly Lord, God of power and might,
hea - ven and earth are full of your glo - ry.
Ho - san - na in the high - est, ho - san - na in the high - est.
Bles - sed is he who comes in the name of the Lord.
Ho - san - na in the high - est, ho - san - na in the high - est.

↑ **Words of Institution**

↑ **Lord's Prayer**

P: As we prepare our hearts for this holy meal,
let us pray the prayer Jesus taught us:

C: **Our Father in heaven, hallowed be your name,
your kingdom come, your will be done,
on earth as in heaven.**

Give us today our daily bread.

Forgive us our sins

as we forgive those who sin against us.

**Save us from the time of trial
and deliver us from evil.**

**For the kingdom, the power, and the glory are yours,
now and forever. Amen.**

↑ Invitation to the Table

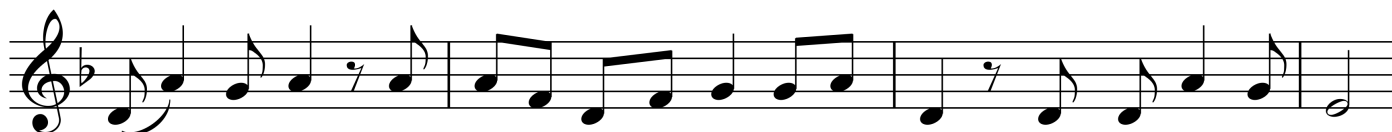
P: Bread for the journey.

A feast for hungry hearts. Come!

Agnus Dei



Lamb of God, you take a-way the sin of the world; have mer-cy on us.



Lamb of God, you take a-way the sin of the world; have mer-cy on us.



Lamb of God, you take a-way the sin of the world; grant us



peace, grant us peace.

↑ Post-Communion Prayers

P: Holy One,

we thank you for the healing
that comes to us in this meal.

Renew our desire for justice,
inspire us to be kind toward others,
and help us journey humbly
with you.

C: Amen.

Announcements

↑ **Benediction**

P: Beloved,
we are God's own people,
holy, claimed, renewed.
God bless you and keep you,
shower you with mercy,
fill you with courage,
and ✠ give you peace.

C: Amen.

↑ **Sending Hymn**

Jesus, Still Lead On
ELW 624

↑ **Dismissal**

A: Go in peace. Share the bread of Christ.
C: Thanks be to God.

Postlude

Fugue in G minor ("Little")
J. S. Bach

About Today's Music

Liturgical worship includes the *propers* (the scripture, prayers, and other texts that are unique to the day or festival) and the *ordinary* (the items that stay the same). As we turn to the preparatory season of Lent before our celebration of Easter, we again sing the liturgy (the *ordinary* texts) to music from Setting Nine in ELW, plus the familiar music at the Gospel Acclamation for "Return to the Lord" that dates to *Lutheran Book of Worship*. Like the jubilant word, "Alleluia," the bolder, celebratory sounds and stops from the organ will return at Easter, along with the victorious hymn of praise that begins, "This is the feast of victory for our God." Today's organ prelude and postlude may also suggest an aural anchor to begin the season (functioning almost like the traditional *propers* that return annually), as this year we again hear J. S. Bach's sublime setting of the 16th-century German hymn, "O Mortal, Bewail Your Manifold Sins" (musically portraying the image of the Savior "stretched out upon the cross") as well as Bach's "Little" organ fugue in G minor.

ANNOUNCEMENTS — FEBRUARY 18, 2024

WELCOME! Please fill out a CONNECT card if you are visiting us today, if you wish to receive our emails or newsletter, or if you want the pastor to contact you. PRAY cards may be used for prayer requests. Place cards in the offering plate as you leave.

OUR WORSHIP CONTINUES after the 10:30 service with fellowship. Thanks to Magdalena Phillips for hosting the coffee hour.

We give thanks for Cantor Kyle and the “PICK-UP” CHOIR today. They will sing in worship at this 10:30 service after a single practice this morning at 9:30. Anyone is welcome to “pick-up” choir days – a great way to try choir for a day!

INTERESTED IN JOINING OUR CHURCH? Pastor Dan invites you to a **New Member Class**, meeting on three Tuesdays at 6 PM: This week, February 20, February 27, and March 19.

- Explore what it means to be a member of Queen Anne Lutheran
- Learn about Lutheran theology and tradition
- (If you decide to join) – Acknowledge your membership in worship on Easter

If you would like to attend, please contact Pastor Dan.

CAN YOU HELP WITH JAN SORENSEN’S MEMORIAL? (COOKIES, ETC.)

The family of Janice (Jan) Sorenson, (*widow of Rev. Rubin Sorenson, pastor here 1973-1992*) has asked for our congregation’s help with the memorial service reception. The memorial service will be held at University Lutheran Church, Seattle this Saturday, February 24 at 2 PM. We are looking for **contributions of cookies, cheese, or fruit**. Food should be brought to our own church narthex by Friday, February 23. Questions? Contact Candy Mathes at cbmathes@aol.com or call 206-919-7330.

THIS WEEK’S CALENDAR

Sunday, February 18

Worship	8:00 AM
Pick-Up Choir Practice	9:30 AM
Worship	10:30 AM

Monday

Food Addicts in Recovery (FH) 7:00 PM

Tuesday

New Members Class (Conf.)	6:00 PM
QALCW Circle (Conf./Zm)	7:00 PM

Wednesday

Sewing & Service (<i>downstairs</i>)	10:00 AM
Worship (<i>chapel</i>)	12:00 PM
Lenten Supper & Study (FH)	6:00 PM
AA Counterbalance (FH)	7:30 PM

Thursday

Lent w/Baldwin & Bonhoeffer (Zm)	7:00 PM
Choir Rehearsal (<i>Music Rm</i>)	7:00 PM

Saturday

Alanon (<i>upstairs</i>)	10:30 AM
AA Shanty Trudgers (<i>upstairs</i>)	7:00 PM

Sunday, February 25

Worship	8:00 AM
Forum	9:00 AM
Worship	10:30 AM



LENTEN WEDNESDAY WORSHIP AT NOON

Join us in the CHAPEL every Wednesday in Lent for a contemplative service including prayer, hymn, and a brief homily.

LENTEN WEDNESDAYS, beginning 2/21:

MID-WEEK SUPPER, DISCUSSION, AND COMPLINE

THE END OF LIFE: A Multi-Faith Conversation

What is your attitude toward the end of life? How do you approach it? How does your faith inform your perspective, and what about the faith of our neighbors?

Mark your calendars for a first-of-its-kind Wednesday Lenten series!

Offered jointly with **Ballard First Lutheran (BFL)**, members of both churches are invited to attend, and locations will alternate. Please join us! All are welcome to:

- A light soup supper at 6:00 PM in the Fellowship Hall
- Presentation and discussion from 6:30 to 7:15 PM
- Evening compline service in the chapel at 7:15 PM

HELP NEEDED:

Volunteers to provide soup or salad can sign up to help on the narthex railing.

SCHEDULE:

2/21 - Dr. Beatrice Lawrence, End of Life from a Jewish Perspective (@ QALC)

2/28 - Pastor Erik Wilson-Weiberg, End of Life from a Christian Perspective (@ BFL)

3/06 - Dua Abudiab, End of Life from a Muslim Perspective (@ QALC)

3/13 - Speaker TBD, End of Life from a Native American Perspective (@ BFL)

3/20 - Roundtable Discussion (@QALC)

LENTEN THURSDAYS

(Continues this week, 2/22)

“Lent w/Baldwin & Bonhoeffer”

Pastor Dan co-leads this class for the Synod’s LiVE Project series, on

Thursday evenings in Lent,

online at 7:00 PM. This course on the faith perspectives of Dietrich Bonhoeffer and James Baldwin is **FREE** to the QALC community.

Use the promo code

LIVEBUNDLE2023

when you register at

<https://tithe.ly/event-registration/#/8122126> More detailed course info is at:

<https://www.lutheransnw.org/events/lent-with-baldwin-and-bonhoeffer/2024-02-15>

LiVE Project

Becoming Communities of Belonging:
In God - With one another - Into God's New Creation

Lent w/ Baldwin & Bonhoeffer
Rev. Dr. Edward Donaldson III
Rev. Dr. Dan Peterson
Thurs 67-8:30 m Feb 15, 22,29,
Mar 7,14,21

*What might German Lutheran Theologian
Dietrich Bonhoeffer and James Baldwin, a
Black, 20th century author, together have to prophetically speak to
our own time?*

NEW FORUM SERIES:

FOR GOD SO LOVED THE WORLD?

– A four-part series about evolution, nature, and suffering

NEXT WEEK: Human Evolution and the Creative Work of God

Dr. Cara Wall-Scheffler • 2/25 • 9 AM

How do paleoanthropologists think about the evidence for human evolution, and what can Christians take away from the wide range of data used to piece together our past? What is the balance between assumptions and testable hypotheses in the study of our evolutionary lineage, and what can we learn about God's creative mechanisms from studying the fossils and processes of our history?

Cara Wall-Scheffler has her PhD in Biological Anthropology from the University of Cambridge (UK). She is currently professor and co-Chair of the department of Biology at Seattle Pacific University. Her main research interest focuses on evolutionary tradeoffs throughout the human lineage. She is especially interested in the tradeoffs inherent in the mobility strategies of populations, and how male and female populations balance access to resources and reproduction. Her work on female hunting strategies was published widely.



MARK YOUR CALENDARS!

Cantor Kyle will present a recital here on the Wech organ on Sunday, March 10 at 4 PM.

Suggested donation of \$10-\$15 (or as you can), with 100% of proceeds to benefit Queen Anne Fine Arts.

From Lutherans Restoring Creation and ELCA Young Adults:



NO PLASTICS FOR LENT The #NoPlasticsforLent initiative, led by young adults across the church, calls us to **prayer** for creation, to **lament** the ways we have been complicit in the degradation of the earth, and to **action** to care for our neighbor in **fasting from the things that are hurting our planet.**

Check your Friday email for more info, or pick up a postcard in the narthex today.

OFFICE & STAFF HOURS:

Barb Bash opens the office from 9 AM to 5:30 PM Tuesday through Thursday this week; Barb will be away Friday through Tuesday, March 5. To access the office next week, contact Pastor Dan.

Pastor Dan is available Tuesday through Thursday, Saturday, and Sunday. Feel free to contact him at pastor@queenannelutheran.org if you wish to make an appointment to see him. If an immediate response is needed, text Pastor Dan at 253.230.9695.

Cantor Kyle Haugen will be at the office Wednesday and Thursday afternoon and evening.

HOLY WEEK AND EASTER WORSHIP

PALM SUNDAY, March 24 • 8:00 AM & 10:30 AM

with procession from courtyard with handbells and palms

GOOD FRIDAY, March 29 • 7:30 PM

EASTER: **Feast of the Resurrection**, Sunday, March 31 • 8:00 AM & 10:30 AM

We hope you can enjoy our **EASTER BREAKFAST, 9-10 AM**: in the Fellowship Hall! Watch for more details and a sign-up in March to volunteer to help set up, provide food, and clean up – and we are grateful to the Men’s Ministry for offering to set up on Saturday, and to host and make pancakes Sunday!

YOUTH BAKE SALE – SUNDAY, MARCH 3

Our small but mighty QALC Youth Group is organizing a bake sale to be held in the narthex after the 10:30 worship on Sunday, March 3. The proceeds from donations will be split between New Horizons Ministry and Queen Anne Helpline – a decision the youth made in a poll. There will be a sign-up in the narthex for anyone who would like to contribute baked goods to the sale, and listen for announcements at church about it.



COMPLINE CHOIR EVENT, FEBRUARY 24 & 25:

Since 1977, I have sung in The Compline Choir, a group founded in 1956 by mystic, composer, and church musician **Peter Hallock**. 2024 marks the 100th anniversary of Hallock’s birth, and I am singing in concerts at Saint Mark’s Cathedral, Seattle, on Feb. 24 at 7:30 PM & Feb. 25 at 3 PM that launch the centenary celebration, together with countertenor José Luis-Muñoz and the Byrd Ensemble. Music sung is varied, spanning the Renaissance to the present day, and includes a handful of works composed by Peter

Hallock – his setting of the Lamentations of the prophet Jeremiah is particularly moving! If you can’t attend in person, a virtual concert will be available on March 2. Having you attend one of the concerts would mean so much to me. Tickets are \$20 for seniors, \$35 for general admission, or \$40 if you want to sit closer to the performers; the virtual concert is just \$20 and you can watch anytime from March 2 to 23. Tickets and details are at <https://www.byrdensemble.com/hallockat100>. I look forward to seeing you there!

– Joel Matter