

THIRD SUNDAY OF EASTER

April 14, 2024

10:30 AM

↑ = Stand **C**: Congregation **A**: Worship Assistant **P**: Presiding Minister

Hymns may be found in the red hymnals in the pews. • Large-print hymns are available in the narthex as you enter. • Quiet Bags with books and soft toys, or Doodle Bags with markers are available in the narthex for children.

Prelude

Introit

Psalm 66:1-3

O be joyful in God, all you lands; sing praises unto the honor of God's name: make God's praise to be exceeding glorious. Say unto God, "O how wonderful are you in your works, O LORD: through the greatness of your power."

Welcome

↑ Gathering Hymn

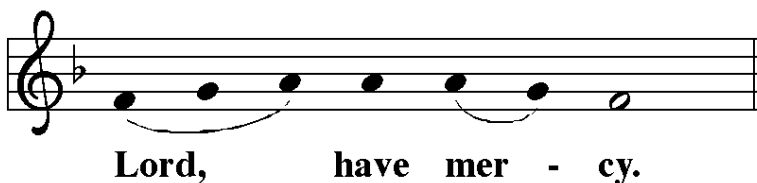
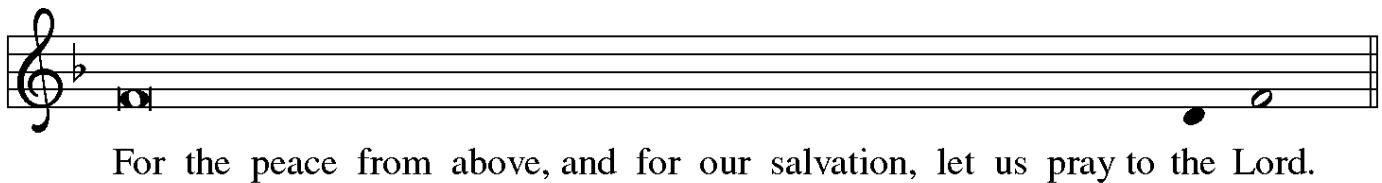
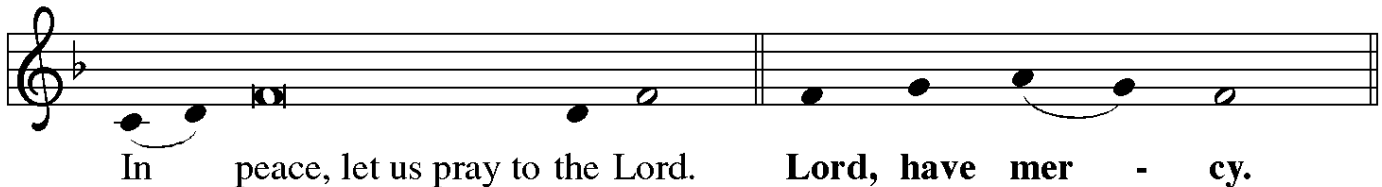
The Strife Is O'er, the Battle Done
ELW 366

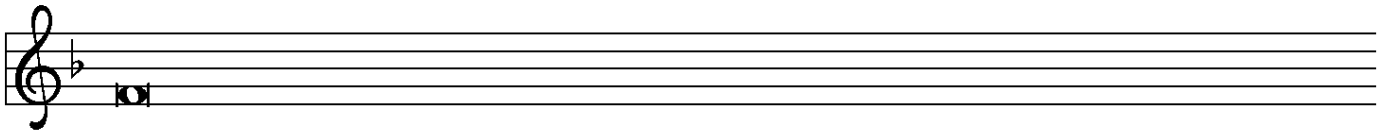
↑ Greeting

P: The grace of our Lord Jesus Christ, the love of God, and the communion of the Holy Spirit be with you all.

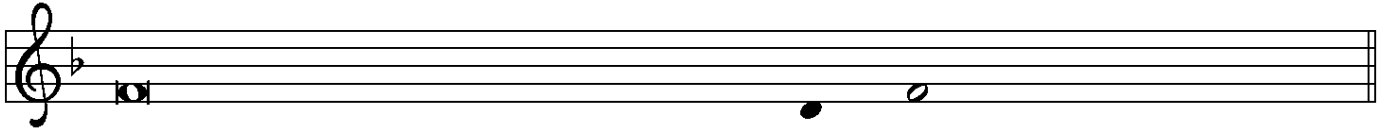
C: And also with you.

↑ Kyrie





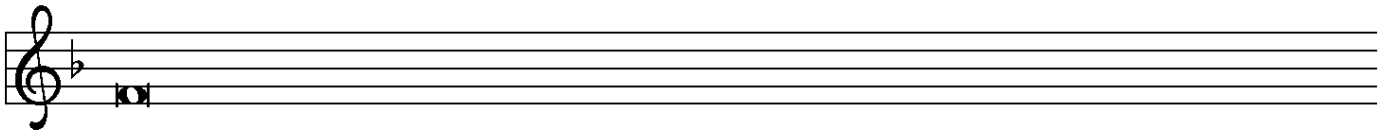
For the peace of the whole world, for the well-being of the church of God,



and for the unity of all, let us pray to the Lord.



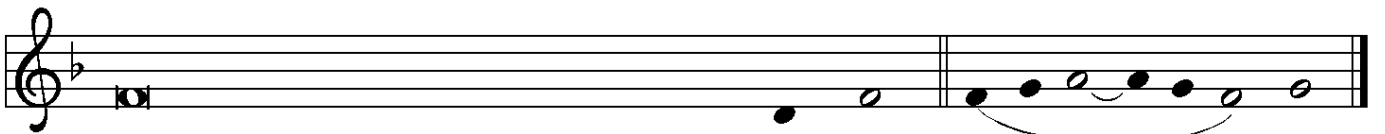
Lord, have mer - cy.



For this holy house, and for all who offer here their worship and praise,



let us pray to the Lord. **Lord, have mer - cy.**



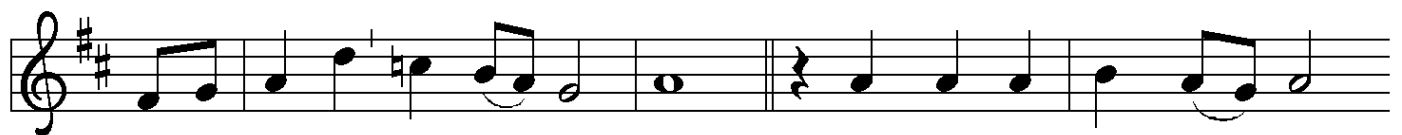
Help, save, comfort, and defend us, gra - cious Lord. **A - men.**

↑ Hymn of Praise

Refrain



This is the feast of vic-to-ry for our God. Al-le - lu - ia,



al - le - lu - ia, al - le - lu - ia. 1 Wor - thy is Christ, the Lamb

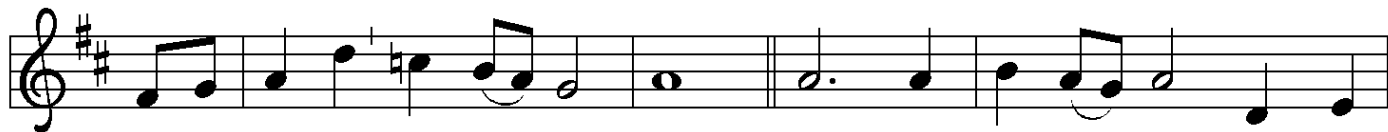


who was slain, whose blood set us free to be peo - ple of God.

Refrain



This is the feast of vic-to-ry for our God. Al-le - lu - ia,



al - le - lu - ia, al - le - lu - ia. 2 Pow - er, rich-es, wis - dom, and

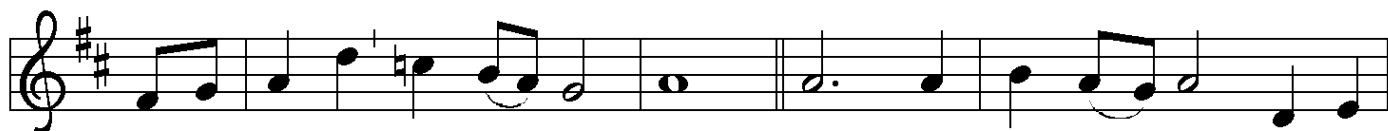


strength, and hon - or, bless - ing, and glo - ry are his.

Refrain



This is the feast of vic-to-ry for our God. Al-le - lu - ia,



al - le - lu - ia, al - le - lu - ia. 3 Sing with all the peo - ple of



God, and join in the hymn of all cre - a - tion: Bless - ing, hon-or,



glo - ry, and might be to God and the Lamb for - ev - er. A - men.

Refrain

This is the feast of vic-to-ry for our God. Al-le - lu - ia,
al - le - lu - ia, al - le - lu - ia. 4 For the Lamb who was
slain has be - gun his reign. Al - le - lu - ia.

Final refrain

This is the feast of vic - to-ry for our God.
Al-le - lu - ia, al - le - lu - ia, al - le - lu - ia.

↑ **Prayer of the Day**

P: The Lord be with you.

G: And also with you.

P: Holy and righteous God, you are the author of life,
and you adopt us to be your children.
Put gladness in our hearts,
that we may live as witnesses to the resurrection of your Son,
Jesus Christ, our Savior and Lord,
who lives and reigns with you and the Holy Spirit,
one God, now and forever

G: Amen.

First Reading

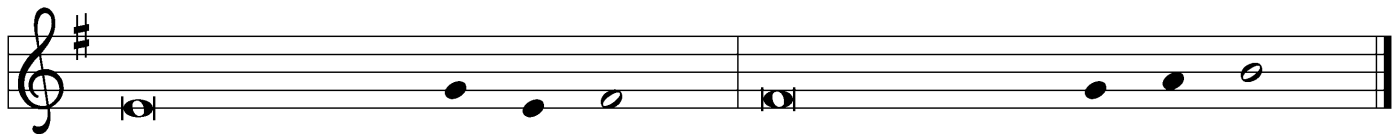
Acts 3:12-19

A: Word of God, Word of life.

G: Thanks be to God.



Refrain: The choir introduces the refrain; all repeat. Then all repeat the refrain as indicated.



Choir: regular verses; Congregation: boldface verses.

- ¹Answer me when I call, O God, defender | of my cause;
you set me free when I was in distress;
have mercy on me and | hear my prayer.
- ²**"You mortals, how long will you dishon- | or my glory;
how long will you love illusions and seek | after lies?"**
- ³Know that the Lord does wonders | for the faithful;
the Lord will hear me | when I call.
- ⁴**Tremble, then, and | do not sin;
speak to your heart in silence up- | on your bed.**

REFRAIN

- ⁵Offer the appointed | sacrifices,
and put your trust | in the Lord.
- ⁶**Many are saying, "Who will show us | any good?"
Let the light of your face shine upon | us, O Lord.**
- ⁷You have put gladness | in my heart,
more than when grain and | wine abound.
- ⁸**In peace, I will lie | down and sleep;
for you alone, O Lord, make me | rest secure.**

REFRAIN

Second Reading

1 John 3:1-7

- A:** Word of God, Word of life.
- G:** Thanks be to God.

↑ Gospel Acclamation



Al - le - lu - ia. Lord, to whom shall we go? You have the
words of e - ter - nal life. Al - le - lu - ia. Al - le - lu - ia.

↑ The Holy Gospel

Luke 24:36b-48

☞: The Gospel according to St. Luke, the twenty-fourth chapter.

After the reading

☞: The Gospel of the Lord.

☩: Praise to you, O Christ.

Sermon

Pastor Abby D'Ambruoso

↑ Hymn of the Day

Now the Green Blade Rises
ELW 379

↑ Apostles' Creed

☩: I believe in God, the Father almighty, creator of heaven and earth.

I believe in Jesus Christ, God's only Son, our Lord,
who was conceived by the Holy Spirit, born of the virgin Mary,
suffered under Pontius Pilate, was crucified, died, and was buried;
he descended to the dead.

On the third day he rose again; he ascended into heaven,
he is seated at the right hand of the Father,
and he will come to judge the living and the dead.

I believe in the Holy Spirit,
the holy catholic church, the communion of saints,
the forgiveness of sins,
the resurrection of the body, and the life everlasting.
Amen.



The Apostles' Creed emphasizes the full humanity of Christ (e.g., he was born, suffered, and died) in response to one of the earliest heresies, namely, the view that Christ only “appeared” to be human. Why? Detractors believed that the Spirit of God, which is good, could not dwell in a material or physical body, which is evil. When we profess the Apostles' Creed, following Jewish tradition, we insist otherwise. The world God made is good! With great joy and without contradiction, therefore, we can say with John 1:14 that “the Word became flesh and dwelled among us.”

Prayers of the Church (*please be seated or kneel*)

A: . . . Lord, in your mercy.

G: **Hear our prayer.**

↑ **Sharing of Peace**

P: The peace of Christ be with you always.

G: **And also with you.**

Holy Communion –

All who seek a taste of the new and forgiven life in Jesus Christ are welcome to receive the sacrament. We confess and believe that Christ, who fills all things, come to us in a special way through the Sacrament of Bread and Wine, and that by sharing in this meal, we share in Christ's real presence among us.

The ministration of the Sacrament is given in two ways:

In the pew:

You may commune in the pews with individual elements. These are available in the narthex as you enter.

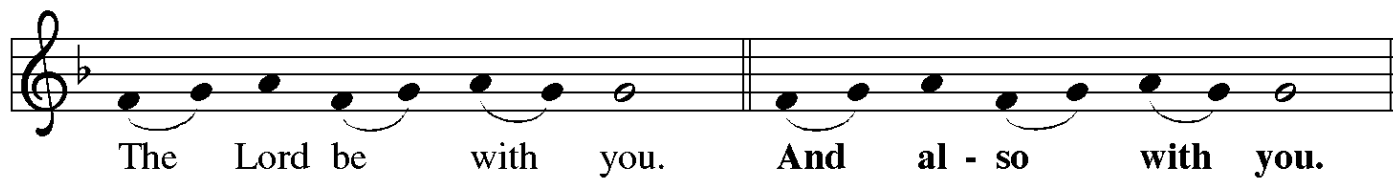
When invited to commune, peel off the bottom tab to eat the bread; peel off the top tab to drink the wine. Place the waste in the paper bag in your pew.

By intinction:

When prompted by the ushers, come down the center aisle to kneel at the railing; please sanitize your hands.

Receive a wafer in your hands. Dip it in a chalice, either wine or grape juice, before partaking. Use the outside aisle to return to your seat.

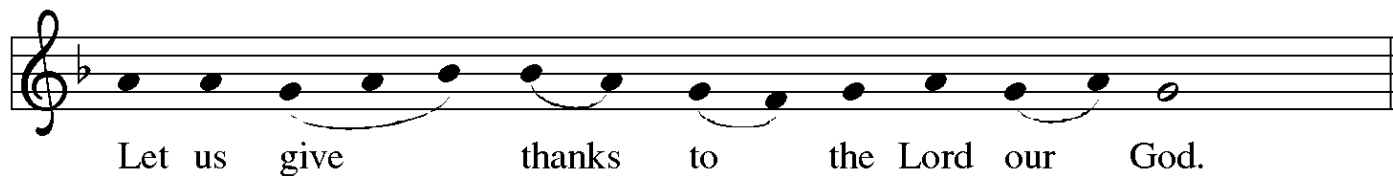
↑ The Great Thanksgiving



The Lord be with you. And al - so with you.



Lift up your hearts. We lift them to the Lord.



Let us give thanks to the Lord our God.



It is right to give our thanks and praise.

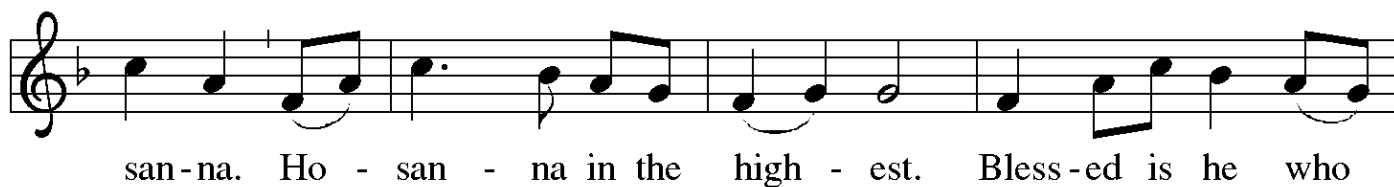
☐: It is indeed right, our duty and our joy . . .
. . . praise your name and join their unending hymn:



Ho - ly, ho - ly, ho - ly Lord, God of pow'r and might,



heav-en and earth are full of your glo - ry. Ho - san - na. Ho -



san-na. Ho - san - na in the high - est. Bless-ed is he who



comes in the name of the Lord. Ho-san - na in the high - est.

↑ Words of Institution

↑ Lord's Prayer

P: As we prepare our hearts for this holy meal,
let us pray the prayer Jesus taught us:

G: **Our Father in heaven, hallowed be your name,
your kingdom come, your will be done,
on earth as in heaven.**

Give us today our daily bread.

Forgive us our sins

as we forgive those who sin against us.

**Save us from the time of trial
and deliver us from evil.**

**For the kingdom, the power, and the glory are yours,
now and forever. Amen.**

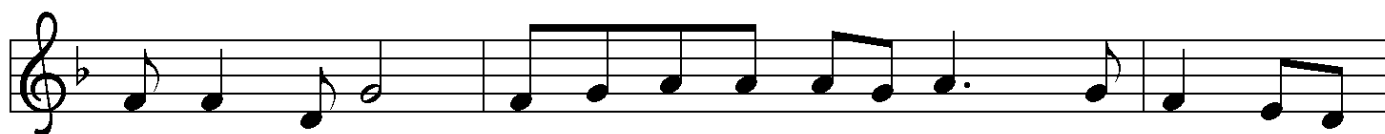
↑ Invitation to the Table

P: Jesus Christ, risen from the dead,
gives everyone a place at the table.
Alleluia! Receive the bread of life.

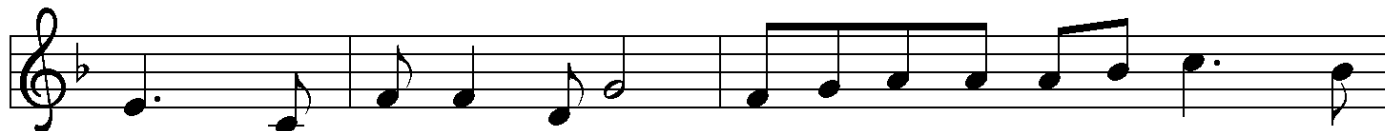
Agnus Dei



Lamb of God, you take a - way the sin of the world; have



mer-cy on us. Lamb of God, you take a - way the sin of the



world; have mer - cy on us. Lamb of God, you take a - way the



sin of the world; grant us peace.

Hymn at the Distribution

Christ Has Risen While Earth Slumbers

Stanzas 1 and 2 are sung by a leader and/or the choir.

ACS 938

All join to sing stanzas 3 & 4.



1 Christ has ris - en while earth slum - bers, Christ has ris - en
2 Christ has ris - en for the peo - ple whom he died to
3 Christ has ris - en to com - pan - ion for - mer friends who
4 Christ has ris - en and for - ev - er lives to chal - lenge



where hope died, as he said and as he prom - ised,
love and save; Christ has ris - en for the wom - en
fear the night, sens - ing loss and lim - i - ta - tion
and to change all whose lives are messed or man - gled,



as we doubt - ed and de - nied. Let the moon em -
bring - ing flow'rs to grace his grave. Christ has ris - en
where their faith had once burned bright. They be - moan what
all who find re - li - gion strange. Christ is ris - en,



brace the bless - ing; let the sun sus - tain the cheer; let the
for dis - ci - ples, hud - dled in an up - stairs room. He whose
is no long - er, they ex - pect no hope - ful sign till Christ
Christ is pres - ent mak - ing us what he has been: ev - i -



world con - firm the ru - mor: Christ is ris - en, God is here!
word in - spired cre - a - tion can't be si - lenced by the tomb.
ends their con - ver - sa - tion, break - ing bread and shar - ing wine.
dence of trans - for - ma - tion in which God is known and seen.

↑ Post Communion Prayer

P: Living God,
you have greeted us in our brokenness
and nourished us with the body of Christ,
broken for us. Risen to new life in you,
send us now to be Christ to a wounded world,
in the name of our risen Savior and Lord.

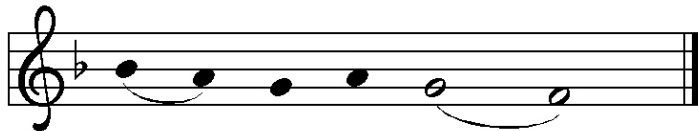
G: Amen.

Announcements

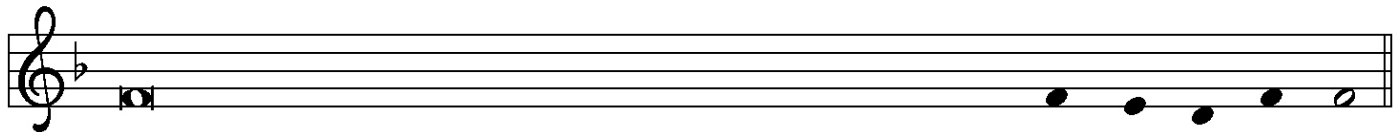
↑ Benediction



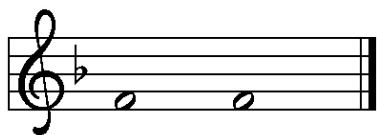
Let us bless the Lord.



Thanks be to God.



Eternal God, the Father, + the Son, and the Holy Spirit, bless and pre-serve you.



A - men.

↑ Sending Hymn

Thine Is the Glory
ELW 376

↑ Dismissal

A: Go in peace. Be Christ to your neighbor.

G: Thanks be to God.

Postlude

ANNOUNCEMENTS —SUNDAY, APRIL 14, 2024

WELCOME! Please fill out a CONNECT card if you are visiting us today, if you wish to receive our emails or newsletter, or if you wish the pastor to contact you. PRAY cards may be used for prayer requests. Place cards in the offering plate as you leave.

WE WELCOME THE REV. ABBY D'AMBRUOSO as guest preacher today. Rev. D'Ambruso currently serves as the Village Pastor for Fullness of God Lutheran Church at Holden Village. Before moving to her dream call in the North Cascades for two years, she lived in Portland, Maine, where she worked as a hospital chaplain. Abby attended St. Olaf College, followed by PLTS. She also served as pastor at Faith Lutheran in Seattle and Fir-Conway Lutheran in Mt. Vernon.

OUR WORSHIP CONTINUES after the 10:30 service with fellowship. Please bring your coffee to the Conference Room to hear the latest info about Holden Village. Thank you, Lisa Ondrejcek, for providing coffee for us!

FLOWERS FOR THE ALTAR are provided today by Peggy Morgan to the glory of God and in loving memory of George Morgan.

TODAY'S FORUM AT 9 AM: UPDATE ON THE EARTH



Dr. Kristie Ebi, UW Professor of Public Health and contributor to the Intergovernmental Panel on Climate Change latest report, returns to give us an “update on the Earth.” Has any progress been made against the climate crisis, and what can we be doing individually and collectively to play our part in reversing this terrifying trend?

Dr. Kristie L. Ebi is a professor of global health and environmental and occupational health sciences at the University of Washington and has been conducting research and practice on the health risks of climate change for over twenty years. Her research focuses on the impacts of and adaptation to climate variability. She focuses on understanding sources of vulnerability, estimating current and future health risks of climate change, and designing adaptation policies to reduce the risks of climate change in multi-stressor environments. She has supported countries in Central America, Europe, Africa, Asia, and the Pacific in assessing their vulnerability in collaboration with WHO, UNDP, USAID, and others. Dr. Ebi's scientific training includes an M.S. in toxicology and a Ph.D. and a Master of Public Health in epidemiology. She has edited four books on aspects of climate change and has more than 180 publications.

We are participating in an **APRIL FOOD & TOILETRIES DRIVE** to benefit the UW Food Pantry: Pastor Chelsea Globe at UW Ministries reports that the number of students, staff, and faculty arriving weekly for food has doubled in the past year. Please bring donations of non-perishable, healthy food and toiletries to the bin in the narthex. They will be delivered during the first week of May.

THIS WEEK'S CALENDAR

Sunday, April 14

| | |
|---------|----------|
| Worship | 8:00 AM |
| Forum | 9:00 AM |
| Worship | 10:30 AM |

Monday

| | |
|-------------------------------|---------|
| Food Addicts in Recovery (FH) | 7:00 PM |
|-------------------------------|---------|

Tuesday

| | |
|------------------------------|---------|
| QALCW Circle (Conf. Rm/Zoom) | 7:00 PM |
|------------------------------|---------|

Wednesday

| | |
|-------------------------------|----------|
| Sewing & Service (downstairs) | 10:00 AM |
| AA Counterbalance (FH) | 7:30 PM |

Thursday

| | |
|------------------------------|---------|
| Choir Rehearsal (Music Room) | 7:00 PM |
|------------------------------|---------|

Friday

| | |
|---------------------------|------------|
| Quilt-Tying (Fireside Rm) | 10 AM-2 PM |
|---------------------------|------------|

Saturday

| | |
|-------------------------------|----------|
| LWR Kit Assembly (FH) | 9-11 AM |
| Alanon (upstairs) | 10:30 AM |
| Girl Scouts (upstairs) | 1:30 PM |
| AA Shanty Trudgers (upstairs) | 7:00 PM |

Sunday, April 21

| | |
|---------|----------|
| Worship | 8:00 AM |
| Forum | 9:00 AM |
| Worship | 10:30 AM |

COME JOIN US AS WE MAKE QUILTS AND ASSEMBLE KITS FOR

LUTHERAN WORLD RELIEF. All ages and genders are welcome to tie quilts and assemble kits; no sewing skills necessary. **Help tie quilts** in the Fireside Room **this Friday, April 19 from 10 to 2.** **Help Assemble LWR kits** – Personal Care & School Kits – **this Saturday, April 20, from 9 to 11** in the Fellowship Hall. (The north doors to the FH will be unlocked.)

NEW IN OUR LIBRARY: Pastor Dan has written a chapter in a new book, based on a sermon he gave at Queen Anne Lutheran on the intersection of quantum physics and the Trinity. A copy of *Preaching the Uncontrolling Love of God* is displayed in the church library along with copies of his chapter.

OFFICE HOURS THIS WEEK

Main Office (Barb Bash): The office will be open Tuesday–Friday, 9:00–5:30

Cantor Kyle schedule this week will vary. Kyle can be contacted via email at cantor@queenannelutheran.org.

Pastor Dan is available Tuesday through Thursday, Saturdays and Sundays. Email pastor@queenannelutheran.org or for immediate response, text 253.230.9695.

April Forum Series: "GOING GREEN: IS IT TOO LATE?"

All are welcome • Sundays 9 –10 AM • Conference Rm. • Zoom option available

Remaining Sessions:

04/21 The Effects of Climate Change on Marine Biology *Magdalena Phillips, QALC*

04/28 Climate Change: perspectives *Earth Ministry/WA Interfaith Power and Light*

04/28 (1 PM session) Climate Change Solutions Faith Communities Can Offer

Dr. Heidi Roop, Univ. of Minnesota

(Dr. Roop will present a public forum based on the ideas in her *Climate Action Handbook*. A free copy will be awarded to one lucky audience member.)

COMPASS HOUSING ALLIANCE'S HOMEWARD GALA 2024



Saturday, April 20, 2024

MOHAI, 860 Terry Ave N, Seattle

To end the cycle of homelessness in our community

Hosted by Terry Hollimon, Emcee, & Kevin Joyce, Auctioneer

6:30 PM Cocktails & Entertainment

7:30 PM Dinner, Program & Live Auction



Individual Tickets: \$200 per person

Tickets include:

Reception featuring hors d'oeuvres, cocktails, and a hosted bar

3-course gourmet dinner with wine

Complimentary parking or rideshare transportation voucher

JOEL MATTER INVITES YOU TO THIS COMPLINE CHOIR CONCERT:



Let Your Alleluias Rise, a program of readings and musical offerings for Eastertide in support of The Compline Choir's 08/24 pilgrimage to England, features music by Thomas Foster, Peter Hallock, Bobby McFerrin, Jeff Junkinsmith, and performances of Alice Parker's *Love Never Ends* and *Love One Another*, and the U.S. premiere of Jacob Beranek's *Abendgebet* –

a virtuosic setting a well-known prayer by Dietrich Bonhoeffer.

Saturday, April 20, at 7:30 PM at First Lutheran Church of Richmond Beach,
18354 8th Ave NW, Shoreline, WA 98177

Sunday, April 21, at 3:00 PM at Emmanuel Episcopal Church,
4400 86th Ave SE, Mercer Island, WA 98040

There is no charge for these concerts; a free will offering will be taken.

CANTOR KYLE INVITES YOU to the spring concerts of his community choir,



Northwest Repertory Singers (NWRS) as they present "To Life! To Love!" on **May 4 at 7:30 PM and May 5 at 3 PM** at Christ Episcopal Church in Tacoma. As artistic director and conductor of the ensemble, Kyle has curated an inspiring program designed to celebrate the beauty of the human spirit and the ways we experience love.

The centerpiece of the concert is the first collection of *Liebeslieder* waltzes by Johannes Brahms for singers and piano. Other music includes "Set Me As a Seal" by René Clausen, "This Little Light of Mine" by Moses Hogan, and diverse pieces based on poetry by Shakespeare and others. You'll find the link to tickets at www.nwrs.org. QALC members can use the code "**kyle50**" (without quotes) for 50% off!