

FOURTH SUNDAY AFTER PENTECOST

June 16, 2024

10:00 AM

↑ = Stand **C**: Congregation **A**: Worship Assistant **P**: Presiding Minister

Hymns may be found in the red hymnals in the pews. • Large-print hymns are available in the narthex as you enter. • Quiet Bags with books and soft toys, or Doodle Bags with markers are available in the narthex for children.

Prelude

Give Me Jesus
Zach Unke (b. 1994)

Introit

Psalm 28: 6, 8, 9

Blessed be the LORD, who has heard the voice of my prayer. You, LORD, are the strength of your people, a safe refuge for your anointed. Save your people and bless your inheritance; shepherd them and carry them forever.

Welcome

↑ Gathering Hymn

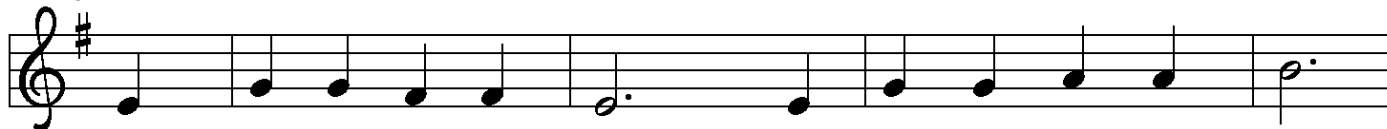
Give Me Jesus
ELW 770

↑ Greeting

P: The grace of our Lord Jesus Christ, the love of God, and the communion of the Holy Spirit be with you all.

C: And also with you.

↑ Kyrie

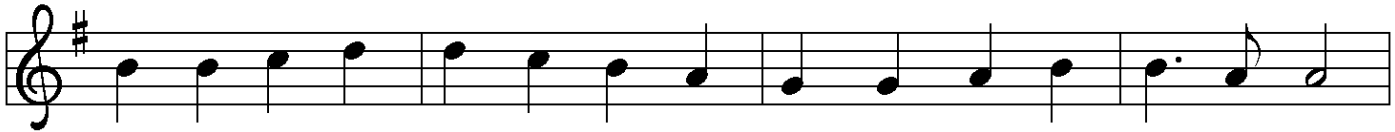


- 1 Have mer - cy on us, Lord, and hear our sol - emn prayer.
- 2 Have mer - cy on us, Christ, and wash a - way our sin.
- 3 Have mer - cy on us, Lord; make sin and shame de - part.



We come to hear your liv - ing word; it saves us from de - spair.
Pour out your grace and make us whole that new life may be - gin.
Re - new us with your sav - ing pow'r; cre - ate in us new hearts!

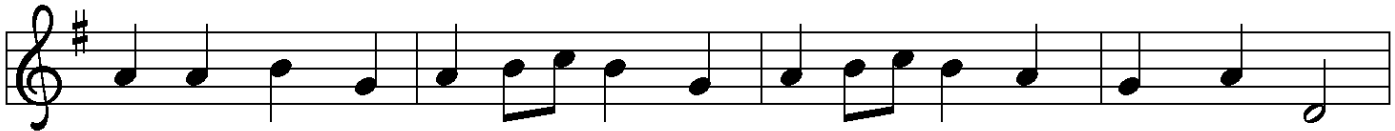
↑Hymn of Praise



1 Glo-ry be to God in heav-en; peace, good-will to all the earth.
2 Glo-ry be to Christ for - ev - er, Lamb of God and Lord of love.
3 Ho - ly One we now ac-claim you; Lord a - lone, to you we call;



Might-y God of all cre - a - tion, Fa - ther of sur - pass - ing worth:
Son of God and gra - cious Sav - ior, you have come from heav'n a - bove;
Ho - ly One in faith we name you, God most high, yet near to all:



we ex - alt you, we a - dore you, we lift high our thanks and praise.
on the cross you died to save us; now you reign at God's right hand.
Je - sus Christ, with God the Spir - it, in the Fa - ther's splen - dor bright.



Saints and an - gels bow be - fore you; here on earth our songs we raise.
Hear our prayer; re - store, for - give us; in your prom - ise firm we stand.
For the peace that we in - her - it, glo - ry be to God on high!

↑Prayer of the Day

P: The Lord be with you.

G: **And also with you.**

P: Let us pray.

O God, you are the tree of life,
offering shelter to all the world.
Graft us into yourself and help us grow,
that we may bear the fruit of your truth and love
to those in need,
through Jesus Christ, our Savior and Lord.

G: **Amen.**

First Reading

Ezekiel 17:22-24

A: Word of God, Word of life.

G: Thanks be to God.

Second Reading

2 Corinthians 5:6-10-17

A: Word of God, Word of life.

G: Thanks be to God.

↑ Gospel Acclamation



Al - le - lu - ia! Lord and Sav - ior: o - pen now your sav - ing word.



Let it burn like fire with - in us; speak un - til our hearts are stirred.



Al - le - lu - ia! Lord, we sing for the good news that you bring.

↑ The Holy Gospel

Mark 4:26-34

P: The Gospel according to St. Mark, the fourth chapter.

G: Glory to you, O Lord.

After the reading

P: The Gospel of the Lord.

G: Praise to you, O Christ.

Sermon

Do You Love God?
Pastor Dan Peterson

↑ Hymn of the Day

I Want Jesus to Walk with Me
ELW 325

↑ Apostles' Creed

☩: I believe in God, the Father almighty,
creator of heaven and earth.

I believe in Jesus Christ, God's only Son, our Lord,
who was conceived by the Holy Spirit,
born of the virgin Mary,
suffered under Pontius Pilate,
was crucified, died, and was buried;
he descended to the dead.

On the third day he rose again; he ascended into heaven,
he is seated at the right hand of the Father,
and he will come to judge the living and the dead.

I believe in the Holy Spirit,
the holy catholic church,
the communion of saints,
the forgiveness of sins,
the resurrection of the body,
and the life everlasting.
Amen.



The Apostles' Creed emphasizes the full humanity of Christ (e.g., he was born, suffered, and died) in response to one of the earliest heresies, namely, the view that Christ only "appeared" to be human. Why? Detractors believed that the Spirit of God, which is good, could not dwell in a material or physical body, which is evil. When we profess the Apostles' Creed, following Jewish tradition, we insist otherwise. The world God made is good! With great joy and without contradiction, therefore, we can say with John 1:14 that "the Word became flesh and dwelled among us."

Prayers of the Church *(please be seated or kneel)*

A: . . . Lord, in your mercy.

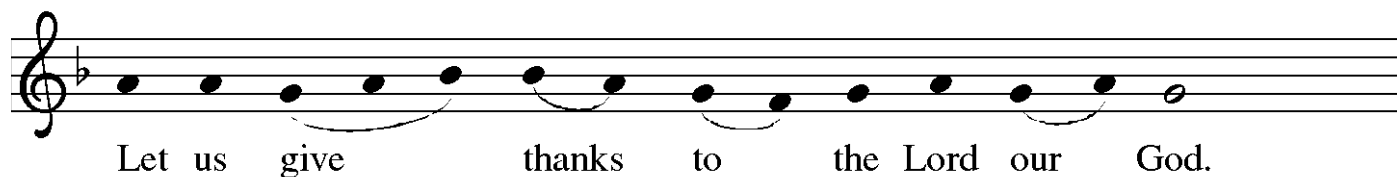
☩: Hear our prayer.

↑ Sharing of Peace

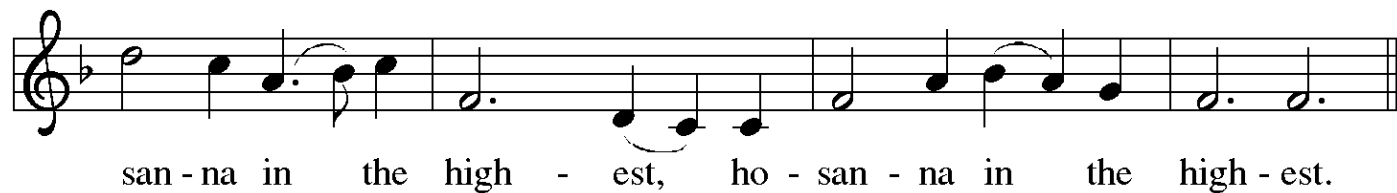
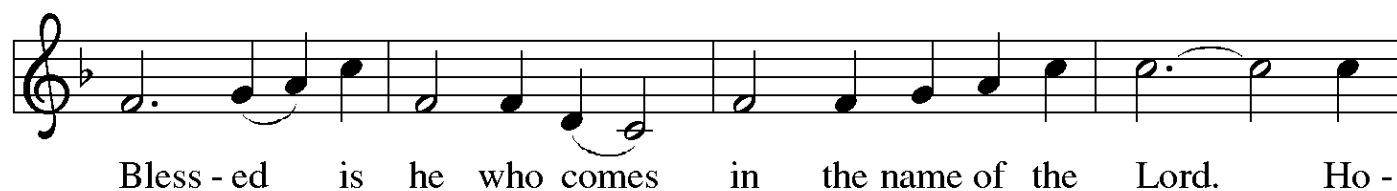
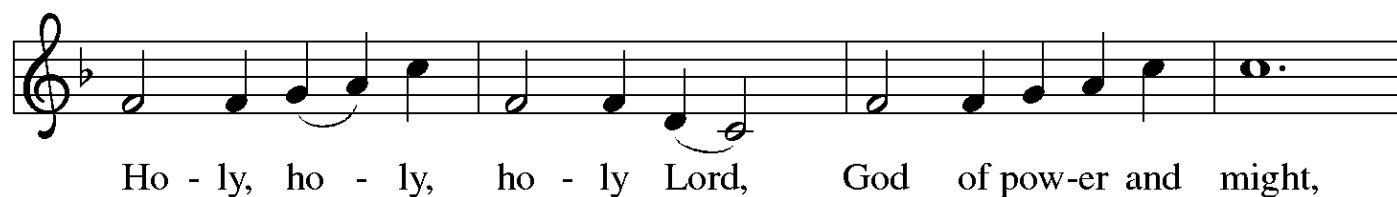
P: The peace of Christ be with you always.

☩: And also with you.

↑ The Great Thanksgiving



☐: It is indeed right, our duty and our joy . . .
... praise your name and join their unending hymn:



↑ Words of Institution

↑ Lord's Prayer

P: Knowing we are loved,
let us pray the prayer Jesus taught us:

G: **Our Father in heaven, hallowed be your name,
your kingdom come, your will be done,
on earth as in heaven.
Give us today our daily bread.
Forgive us our sins
as we forgive those who sin against us.
Save us from the time of trial
and deliver us from evil.
For the kingdom, the power, and the glory are yours,
now and forever. Amen.**

↑ Invitation to the Table

P: Come and taste the joy of God!

Holy Communion –

All who seek a taste of the new and forgiven life in Jesus Christ are welcome to receive the sacrament. We confess and believe that Christ, who fills all things, come to us in a special way through the Sacrament of Bread and Wine, and that by sharing in this meal, we share in Christ's real presence among us.

The ministration of the Sacrament is given in two ways:

In the pew:

You may commune in the pews with individual elements. These are available in the narthex as you enter. When invited to commune, peel off the bottom tab to eat the bread; peel off the top tab to drink the wine. Place the waste in the paper bag in your pew.

By intinction:

When prompted by the ushers, come down the center aisle to kneel at the railing; please sanitize your hands.

Receive a wafer in your hands. Dip it in a chalice, either wine or grape juice, before partaking. Use the outside aisle to return to your seat.

Agnus Dei



1 O Lamb of God, you bear the sin of all the world a - way;
2 O Lamb of God, you bear the sin of all the world a - way;
3 O Lamb of God, you bear the sin of all the world a - way;



you suf-fered death our lives to save: have mer - cy now, we pray.
you set us free from guilt and grave: have mer - cy now, we pray.
e - ter-nal peace with God you made: give us your peace, we pray.

Distribution Hymn

Let Us Break Bread Together
ELW 471

↑ Post-Communion Prayer

☐: Jesus, Bread of life,
we have received from your table
more than we could ever ask.
Having fed us in this meal,
Strengthen us to love others as you first loved us,
through Christ our Lord.

☑: Amen.

Announcements

↑ Benediction

☐: Life is short, and we do not know what tomorrow will bring.
So be swift to love,
and make haste to be kind.
In the name of the Father, Son, and Holy Spirit,

☑: Amen.

↑ **Sending Hymn**

Lift Every Voice and Sing
ELW 841

↑ **Dismissal**

A: Go in peace. Be Christ to your neighbor.

G: **Thanks be to God.**

Postlude

Jubilate

Olufela Obafunmilayo “Fela” Sowande (1905–1987)

About Today’s Music

Today’s prelude on “Give Me Jesus” is by Zach Unke (b. 1994), a graduate of Martin Luther College in New Ulm, MN, who was born in Tacoma and moved to Wisconsin in 2005. His composing career began by his late teens or early twenties, and several volumes of piano music and other works for piano or choir are published with the major Lutheran publishing houses (including Augsburg Fortress, which published the collection that includes “Give Me Jesus”). Today’s postlude is by Nigerian composer Olufela Obafunmilayo “Fela” Sowande (1905–1987) and incorporates musical elements of the Yoruba culture of West Africa. Educated in Lagos, Nigeria and in London, England, Sowande’s compositional output spanned choral, band, church organ, and theater organ; he appeared as a piano soloist for George Gershwin’s *Rhapsody in Blue*; he performed as a duo with pianist Fats Waller; and, during World War II, he composed music for the British Ministry of Information. After church music positions in Britain and a stint with the Nigerian Broadcasting Corporation, Sowande toured as a concert organist and taught at American universities. He is regarded as one of the most famous African composers of works in the Western “classical” idiom.

– *Cantor Kyle*

ANNOUNCEMENTS — SUNDAY, JUNE 16, 2024

WELCOME! Please fill out a CONNECT card if you are visiting us today, if you wish to receive our emails or newsletter, or if you'd like the pastor to contact you. Use PRAY cards for prayer requests. Place cards in the offering plate as you leave.



JUNE FORUMS @9:

**Today, June 16:
Exploring African
American Spirituals**
*with Kyle Haugen
on Juneteenth*

The musical genre of the African American spiritual is cherished across the globe. Where did spirituals originate? Who collected and preserved them for future generations? How did spirituals become part of standard choral concert repertoire? Which famous composer said that “the future music of this country must be founded upon” spirituals? How are spirituals used today in the context of worship, including examples in our ELW hymnal? Join Cantor Kyle for an overview of this American art form and exploration of these questions and more. (Singing optional but encouraged!)

Kyle Haugen joined our staff in March 2019 as full-time Cantor. A versatile musician, Kyle's experience spans Baroque organ to musical theater. A native of Tacoma, WA, he holds an undergraduate degree from the University of Puget Sound and the Master of Sacred Music degree from Luther Seminary, St. Paul, MN, in conjunction with St. Olaf College. His published choral compositions have been performed, recorded, and broadcast on radio and television across the United States. Kyle is also the Artistic Director of Northwest Repertory Singers, an auditioned choral ensemble in Tacoma.



Sunday, June 23: Forum Suggestions for 2024 / 2025

An open discussion — Whether it is a request for digging deeper into what we studied this year, or suggestions for new topics or speakers, this is your chance to shape our curriculum for the coming year.

THIS WEEK'S CALENDAR

Sunday, June 16

Forum (*Conf. Rm/Zoom*) 9:00 AM
Worship 10:00 AM

Monday

Food Addicts in Recovery (*FH*) 7:00 PM

Tuesday

QALCW Circle (*Library/Zm*) 7:00 PM

Wednesday

Sewing & Service (*downstairs*) 10:00 AM
AA Counterbalance (*FH*) 7:30 PM

Saturday

Alanon (*upstairs*) 10:30 AM
AA Shanty Trudgers (*upstairs*) 7:00 PM

Sunday, June 23

Forum (*Conf. Rm/Zoom*) 9:00 AM
Worship 10:00 AM

JUNE 30 IS PRIDE SUNDAY! Sign up if you'd like to participate.



At the Seattle Pride Parade, a contingent of up to 200 “Loving Lutherans” from the NW WA Synod churches will walk together. The Parade theme for this year is ‘**Now!**’ in honor of the original rallying cry for the recognition of Seattle’s LGBTQIA+ community. Queen Anne Lutheran members can participate! Sign up in the narthex if you’re interested. **Ingrid Wysong** is our point person and will be sending out information about when to gather for the parade, where along the parade route the Lutherans will be staging, and info about what to bring, signage, etc.



We are in search of **two representatives** to serve on the Board of **PROJECT PHOENIX** on behalf of Queen Anne Lutheran as per its guidelines, beginning in the fall. The mission of Project Phoenix (formerly Lutheran Youth of North Seattle, or LYONS), is to serve and welcome ALL youth in a Christ-centered community of worship, witness, service, education, growth and fun. Project Phoenix is led by a board composed of representatives from the member churches which provides oversight and programming for Project Phoenix activities. Please contact Pastor Dan if you are able and willing to serve, or if you have questions about Project Phoenix.

CHURCH OF STEADFAST LOVE ALL-CONGREGATIONAL GATHERING –

Join Pastor Kristy and members of COSL and other Lutheran churches at a Seattle Mariners game, Sunday, August 25 at 1:10 pm. Ten free tickets are available for QALC members; sign up in the narthex, first-come, first-served. Free hats, too! Adults only.

OUR VISITATION TEAM will meet next Sunday June 23 after church in the Conference Room. The Visitation Team reaches out and stays connected with homebound members of the congregation (and any member who might appreciate the outreach) via phone calls, emails, postal mail, and in-person visits (which can include bringing communion). If you would like to become part of our Visitation Team, please talk to Pastor Dan and/or come to the meeting. If you or someone you know would appreciate outreach from us, please email visitation@queenannelutheran.org

QUEEN ANNE HELPLINE “RUN FOR HOME” YESTERDAY: We were delighted to host both the start and finish of this fundraiser for Queen Anne Helpline on our church grounds. Thanks to any in the congregation who assisted in the church building, at the race, or by running.

RIDWELL SPECIAL COLLECTIONS NOTE: Besides their regular items (thin plastics, batteries, lightbulbs and cloth), Ridwell is collecting **CORKS** today. If you brought corks, add them to the bag just inside our McGraw Street door.

RIDWELL is looking for high school students to be part of their first-ever **Student Leadership summer program**. Students will “get a peek behind the scenes of a social impact startup and will learn about recycling and reuse so they can educate others.” Students will be given a goal to inspire 10 new households to try out Ridwell’s services. Interested teens should register by Sunday, June 30. Look for the link in Friday’s email, or contact the church office for it.

OFFICE HOURS THIS WEEK

Main Office (Barb Bash): The office is open Tuesday–Friday, 9:00–5:30.

Cantor Kyle is here Wednesday and Thursday afternoon and evenings.

E-mail Kyle at cantor@queenannelutheran.org.

Pastor Dan is available Tuesday–Thursday, Saturday and Sunday. Contact Pastor Dan at pastor@queenannelutheran.org, or for immediate response, text 253.230.9695.

On Sunday, June 30, PASTOR CHELSEA GLOBE of the UW Lutheran Campus Ministry will be our supply pastor. There will be information available about the campus ministry, and we hope you can come and support it. In her spring newsletter, Pastor Chelsea wrote:

“We have many exciting events happening for students this quarter and in our ministry. We are especially excited to celebrate the "official" merging of Lutheran Campus Ministry and Ministry to International Students & Scholars with our call to Pastor Joseph Li, who was installed during an on-campus service on May 5.

Pastor Chelsea has started a midweek Bible study on campus called “Queer Bible Study.” This is an outreach program specifically to queer students and allies who have been ostracized by the church and want to dig into complicated biblical texts that have been used to justify their abuse. Please pray for the students who we will encounter through this program.”

Here at UW Lutherans, we believe that knowing, through Jesus, that we are loved and valued by the inclusive God of all, encountered in community, greatly improves our lives. All young people deserve to know the worth and value they have as God's children in Jesus. It is a joy and honor to provide a community for students where they can be known and experience the love of God without expectation or demand. Thank you for your continuing support in this vital mission!”

–Pastor Chelsea Globe



Lay Ministry Formation

An Invitation from the NW WA Synod

Do you have a desire to discern where God is already at work within your life context/ ministry and to join God there?

Are you hearing a call to grow deeper in ministry that you would like to explore?

Do you long for quality discussion within a nurturing environment of curious learning?

Are you interested in gaining broader perspectives in the areas of theological and biblical reflection within the context of real-life practical concerns?

What Is Lay Ministry Formation?

Lay Ministry Formation (LMF) is a 2-year, cohort-based educational and training program of the Northwest Washington Synod. It is especially designed for lay leaders who wish to deepen their sense of God's call to ministry. Participants will identify their own passionate call to ministry, and will be invited into spiritual reflection of it through four modules within a 2-year curriculum.

Who Might Participate in LMF?

This is a Certificate program that prepares participants to learn, discuss, experiment, and wrestle with what it means to be lay leaders in their church or vocational context. Whether their leadership context is within children/youth ministry, music ministry, social justice, equity and inclusion, small group leadership, care giving, chaplaincy, evangelism, etc...this program will better prepare participants to discern the movement of God in that context, and to join in God's mission.

Details of the LMF Program

- Next Info Meeting: **Tuesday, June 25** at 7pm via Zoom
- Next 2-year Cohort starts: Sept '24; Applications due Mon, Sept 2
- Cost is \$750 per person/ year—financial assistance is available
- For more details, email Rev. Dr. David Hahn or Rev. Andy Yee