

# SIXTH SUNDAY AFTER PENTECOST

June 30, 2024

10:00 AM

↑ = Stand    **C**: Congregation    **A**: Worship Assistant    **P**: Presiding Minister

Hymns may be found in the red hymnals in the pews. • Large-print hymns are available in the narthex as you enter. • Quiet Bags with books and soft toys, or Doodle Bags with markers are available in the narthex for children.

## Prelude

*Piano variations on FAITHFULNESS,  
including free improvisation and a setting by  
Pam Gervais (b. 1960)*

## Introit

**Psalm 121: 1, 2, 7, 8**

I lift up my eyes to the hills; from where is my help to come?  
My help comes from the LORD, the maker of heaven and earth.  
The LORD will preserve you from all evil and will keep your life.  
The LORD will watch over your going out and your coming in,  
from this time forth forevermore.

## Welcome

### ↑ Gathering Hymn

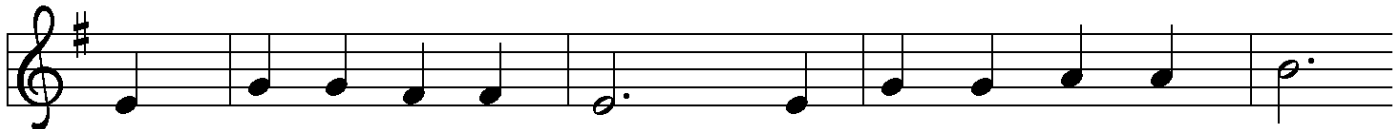
*We Come to You for Healing, Lord*  
ELW 617

### ↑ Greeting

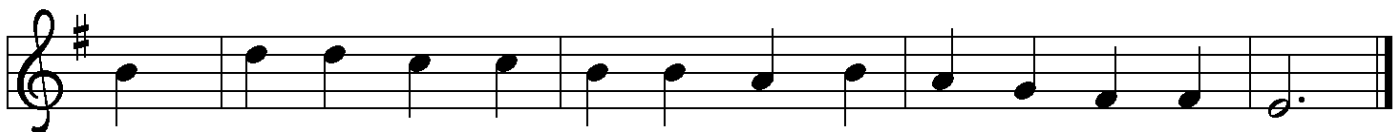
**P**: The grace of our Lord Jesus Christ, the love of God,  
and the communion of the Holy Spirit be with you all.

**C**: And also with you.

### ↑ Kyrie

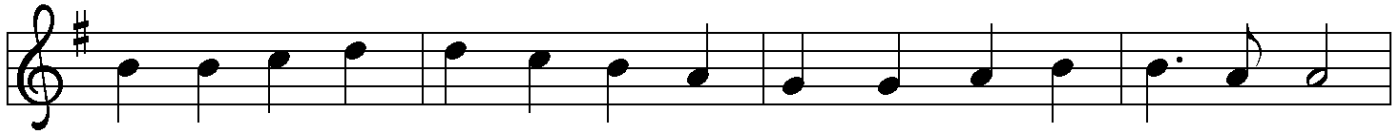


1 Have mer - cy on us, Lord, and hear our sol - emn prayer.  
2 Have mer - cy on us, Christ, and wash a - way our sin.  
3 Have mer - cy on us, Lord; make sin and shame de - part.



We come to hear your liv - ing word; it saves us from de - spair.  
Pour out your grace and make us whole that new life may be - gin.  
Re - new us with your sav - ing pow'r; cre - ate in us new hearts!

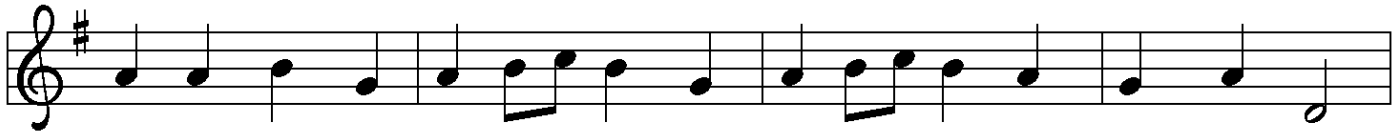
## ↑Hymn of Praise



1 Glo-ry be to God in heav-en; peace, good-will to all the earth.  
2 Glo-ry be to Christ for - ev - er, Lamb of God and Lord of love.  
3 Ho - ly One we now ac-claim you; Lord a - lone, to you we call;



Might-y God of all cre - a - tion, Fa - ther of sur - pass - ing worth:  
Son of God and gra - cious Sav - ior, you have come from heav'n a - bove;  
Ho - ly One in faith we name you, God most high, yet near to all:



we ex - alt you, we a - dore you, we lift high our thanks and praise.  
on the cross you died to save us; now you reign at God's right hand.  
Je - sus Christ, with God the Spir - it, in the Fa - ther's splen - dor bright.



Saints and an - gels bow be - fore you; here on earth our songs we raise.  
Hear our prayer; re - store, for - give us; in your prom - ise firm we stand.  
For the peace that we in - her - it, glo - ry be to God on high!

## ↑Prayer of the Day

**P**: The Lord be with you.

**G**: **And also with you.**

**P**: Let us pray.

Almighty and merciful God,  
we ask you to hear the prayers of your people.  
Defend us against all harm and danger,  
that we may live and grow in faith and hope,  
through Jesus Christ, our Savior and Lord.

**G**: **Amen.**

## First Reading

Lamentations 3:22-33

**A:** Word of God, Word of life.

**G:** Thanks be to God.

## Second Reading

2 Corinthians 8:7-15

**A:** Word of God, Word of life.

**G:** Thanks be to God.

## ↑ Gospel Acclamation



Al - le - lu - ia! Lord and Sav - ior: o - pen now your sav - ing word.



Let it burn like fire with - in us; speak un - til our hearts are stirred.



Al - le - lu - ia! Lord, we sing for the good news that you bring.

## ↑ The Holy Gospel

Mark 5:21-43

**P:** The Gospel according to St. Mark, the fifth chapter.

**G:** Glory to you, O Lord.

*After the reading*

**P:** The Gospel of the Lord.

**G:** Praise to you, O Christ.

## Sermon

Pastor Chelsea Globe

## ↑ Hymn of the Day

*Great Is Thy Faithfulness*

ELW 733

## ↑ Apostles' Creed

**☩:** I believe in God, the Father almighty,  
creator of heaven and earth.

I believe in Jesus Christ, God's only Son, our Lord,  
who was conceived by the Holy Spirit,  
born of the virgin Mary,  
suffered under Pontius Pilate,  
was crucified, died, and was buried;  
he descended to the dead.

On the third day he rose again; he ascended into heaven,  
he is seated at the right hand of the Father,  
and he will come to judge the living and the dead.

I believe in the Holy Spirit,  
the holy catholic church,  
the communion of saints,  
the forgiveness of sins,  
the resurrection of the body,  
and the life everlasting.  
Amen.



The Apostles' Creed emphasizes the full humanity of Christ (e.g., he was born, suffered, and died) in response to one of the earliest heresies, namely, the view that Christ only "appeared" to be human. Why? Detractors believed that the Spirit of God, which is good, could not dwell in a material or physical body, which is evil. When we profess the Apostles' Creed, following Jewish tradition, we insist otherwise. The world God made is good! With great joy and without contradiction, therefore, we can say with John 1:14 that "the Word became flesh and dwelled among us."

## Prayers of the Church *(please be seated or kneel)*

**☩:** . . . Lord, in your mercy.

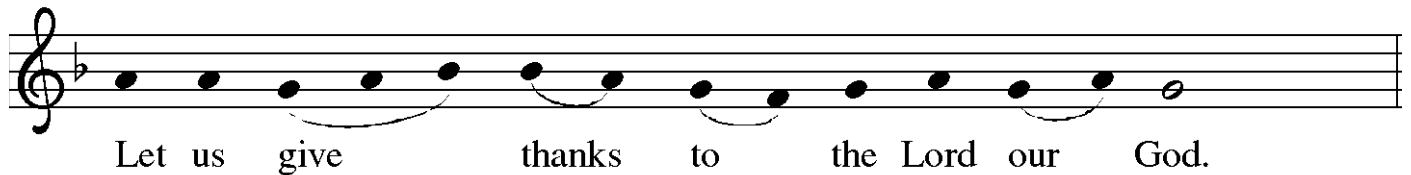
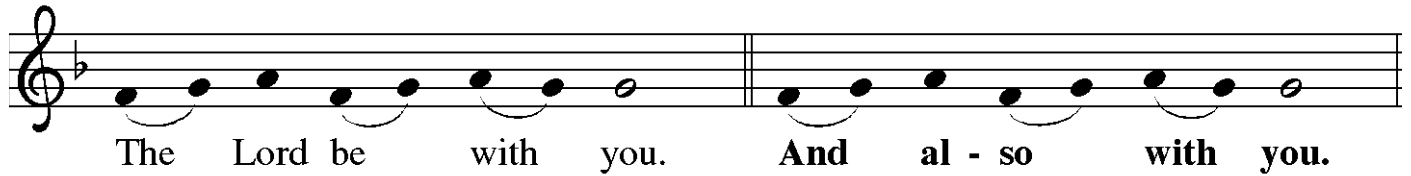
**☩:** Hear our prayer.

## ↑ Sharing of Peace

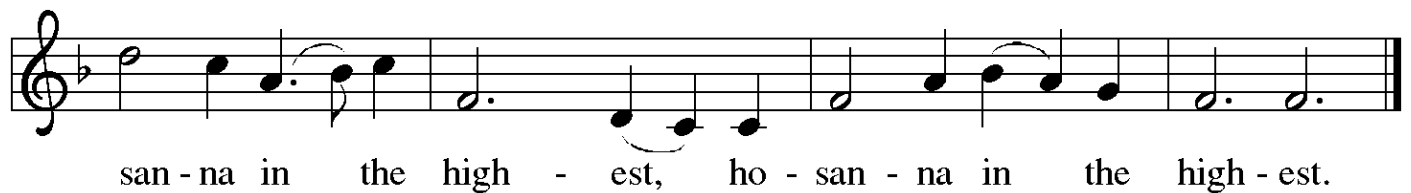
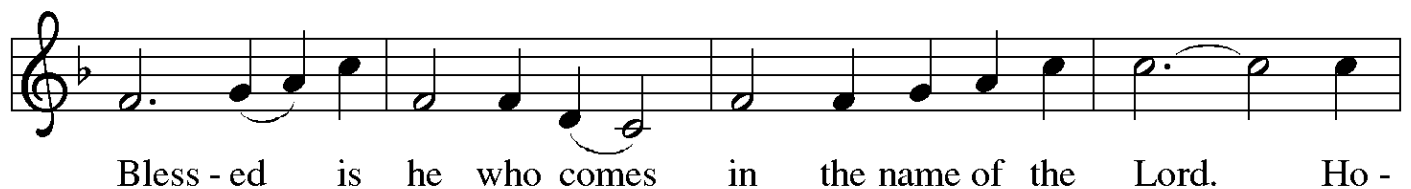
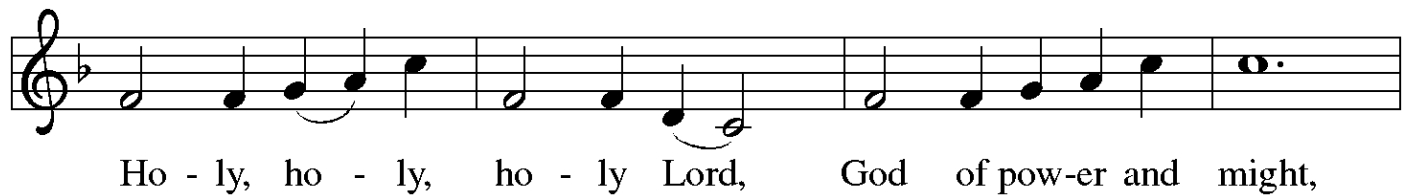
**☩:** The peace of Christ be with you always.

**☩:** And also with you.

# ↑ The Great Thanksgiving



☐: It is indeed right, our duty and our joy . . .  
. . . praise your name and join their unending hymn:



## ↑ Words of Institution

### ↑ Lord's Prayer

**P**: Knowing we are loved,  
let us pray the prayer Jesus taught us:

**G**: **Our Father in heaven, hallowed be your name,  
your kingdom come, your will be done,  
on earth as in heaven.  
Give us today our daily bread.  
Forgive us our sins  
as we forgive those who sin against us.  
Save us from the time of trial  
and deliver us from evil.  
For the kingdom, the power, and the glory are yours,  
now and forever. Amen.**

### ↑ Invitation to the Table

**P**: Come and taste the joy of God!

#### **Holy Communion –**

All who seek a taste of the new and forgiven life in Jesus Christ are welcome to receive the sacrament. We confess and believe that Christ, who fills all things, come to us in a special way through the Sacrament of Bread and Wine, and that by sharing in this meal, we share in Christ's real presence among us.

The ministration of the Sacrament is given in two ways:

#### **In the pew:**

You may commune in the pews with individual elements. These are available just inside as you enter the sanctuary. When invited to commune, peel off the bottom tab to eat the bread; peel off the top tab to drink the wine. Place the waste in the paper bag in your pew.

#### **By intinction:**

When prompted by the ushers, come down the center aisle to kneel at the railing; please sanitize your hands.

Receive a wafer in your hands. Dip it in a chalice, either wine or grape juice, before partaking. Use the outside aisle to return to your seat.

## Agnus Dei



1 O Lamb of God, you bear the sin of all the world a - way;  
2 O Lamb of God, you bear the sin of all the world a - way;  
3 O Lamb of God, you bear the sin of all the world a - way;



you suf-fered death our lives to save: have mer-cy now, we pray.  
you set us free from guilt and grave: have mer-cy now, we pray.  
e - ter-nal peace with God you made: give us your peace, we pray.

## Distribution Hymn

*There Is a Balm in Gilead*

ELW 614

### ↑ Post-Communion Prayer

**P**: Jesus, bread of life,  
we have received from your table  
more than we could ever ask.  
Having fed us in this meal,  
Strengthen us to love others as you first loved us,  
through Christ our Lord.

**C**: Amen.

## Announcements

### ↑ Benediction

**P**: The Lord bless you and keep you.  
The Lord make his face to shine on you  
and be gracious to you.  
The Lord look upon you with favor  
and ✠ grant you peace.

**C**: Amen.

## ↑ Sending Hymn

*God, Whose Giving Knows No Ending*

ELW 678

*This morning, ELW 678 is sung to the tune HYFRYDOL, a well-known melody often associated with the hymn “Love Divine, All Loves Excelling” (ELW 631).*

## ↑ Dismissal

**A:** Go in peace. Be Christ to your neighbor.

**G:** Thanks be to God.

## Postlude

### About Today’s Music

Have you ever thought about the component parts of a hymn? Most hymns in ELW include four components: 1) the *text*; 2) the *tune*, with its own name listed at the lower right in SMALL CAPITALS); 3) the *meter*, given beneath the tune name as the number of syllables per line, such as 87 87 D (where “D” means “doubled”); and 4) the *harmony* (sometimes called the “setting”). Texts and tunes can sometimes be successfully mixed and matched. To see if a text can be sung to a different tune, note the meter of the poetry and consult the Metrical Index of Tunes (p. 1199 of ELW) to find other tunes with the same meter. However, matching texts and tunes is more art than science; even if “the numbers match,” sometimes a melody is a poor fit. (Try singing “Amazing Grace” to the tune of “Joy to the World,” repeating the last six syllables as needed, and you’ll see that the character of the melody is as important as the meter!) The author of today’s Sending Hymn, “God, Whose Giving Knows No Ending” (ELW 678) had the Welsh tune HYFRYDOL in mind when he wrote the hymn. Yet many hymnals have matched the text with alternate tunes – perhaps because the much-loved HYFRYDOL typically appears multiple times in any given hymnal (in ELW, it is used with four different hymns already). Because the tune given for ELW 678 is not very familiar, on this summertime Sunday we will sing the text to HYFRYDOL, sending us forth with a favorite melody. – *Cantor Kyle*



## ANNOUNCEMENTS — SUNDAY, JUNE 30, 2024

**WELCOME!** Please fill out a CONNECT card if you are visiting us today, if you wish to receive our emails or newsletter, or if you'd like the pastor to contact you. Use PRAY cards for prayer requests. Place cards in the offering plate as you leave.

**TODAY WE WELCOME OUR GUEST PASTOR, REV. CHELSEA GLOBE** of the UW Lutheran Campus Ministry. There is information in the narthex available about this ministry, and we hope you can support it. Pastor Chelsea joined the Lutheran Campus Ministry team at UW in November 2020. She grew up in Enumclaw, WA, graduated from Whitworth in Spokane and earned her MDiv at Seattle. She was ordained in the ELCA in 2014 and served in parish ministry in Federal Way. Pastor Chelsea loves working with college students and supporting them during this intensely formative time of their lives. She also finds great joy in speaking and preaching at ELCA congregations around the state to promote this important ministry and encourage congregations to support young adults in their own contexts. To check out what campus ministry has been up to, visit our website ([www.uwlutherans.org](http://www.uwlutherans.org)) or social media pages (@UWLutherans). If you'd like to support this ministry financially, you can give anytime on their website.

**OUR WORSHIP CONTINUES** after the service with fellowship. Thanks to Aaron Boysen for hosting coffee hour after the service.

**TODAY IS PRIDE SUNDAY!** At the Seattle Pride Parade, a contingent of 200 "Loving Lutherans" from the NW WA Synod churches is walking together. The Parade theme for this year is 'NOW!' in honor of the original rallying cry for the recognition of Seattle's LGBTQIA+ community. Anyone from Queen Anne Lutheran who would like to go to the parade and cheer them on from the sidelines, or to visit the Pride Festival on the grounds of the Seattle Center — the Parade's endpoint — is encouraged to do so.



**NWWA Synod ELCA PRIDE BANDANAS** — Please take one and wear it today to the parade (or other appropriate venue) to show our love and support! An optional contribution of \$5 to "New Horizons" may be placed in the offering plate.

### THIS WEEK'S CALENDAR

#### Sunday, June 30

*Rev. Chelsea Globe, presiding*

Worship 10:00 AM

#### Monday

Food Addicts in Recovery (FH) 7:00 PM

#### Wednesday

Sewing & Service (*downstairs*) 10:00 AM

AA Counterbalance (FH) 7:30 PM

#### Thursday, July 4 (office closed)

#### Saturday

Alanon (*upstairs*) 10:30 AM

Girl Scouts (*upstairs*) 1:30 PM

AA Shanty Trudgers (*upstairs*) 7:00 PM

#### Sunday, July 7

*Rev. John Michael Barich, presiding*

Worship 10:00 AM



We are in search of **two representatives** to serve on the board of **PROJECT PHOENIX** on behalf of Queen Anne Lutheran as per its guidelines, beginning in the fall. The mission of Project Phoenix (formerly Lutheran Youth of North Seattle, or LYONS), is to serve and welcome ALL

youth in a Christ-centered community of worship, witness, service, education, growth and fun. Project Phoenix is led by a board composed of representatives from the member churches which provides oversight and programming for Project Phoenix activities. Please contact Pastor Dan if you are able and willing to serve, or if you have questions about Project Phoenix.

### **RIDWELL'S UPCOMING SPECIAL COLLECTIONS:**

**June 30:** Prescription bottles • **July 14:** Bread tags • **July 28:** Denim clothing

### **CHURCH OF STEADFAST LOVE ALL-CONGREGATIONAL GATHERING –**

Join Pastor Kristy and members of COSL and other Lutheran churches at a Seattle Mariners game, Sunday, August 25 at 1:10 pm. Ten free tickets are available for QALC members; sign up in the narthex, first-come, first-served. Free hats, too! Adults only.



**INTERESTED IN CARING FOR GOD'S CREATION?** You are invited to join Queen Anne Lutheran's reinvigorated Green Team! Led by Susan Evans, Lisa Kjaer, and Magdalena Phillips, we are excited to strengthen the church's current environmental practices while also envisioning new ways that we can care for the Earth. We are currently working on becoming an official Greening Congregation through Earth Ministry. Want to participate? Have an idea? Email Magdalena ([mlpseattle@gmail.com](mailto:mlpseattle@gmail.com)) to join the team!

### **OFFICE HOURS THIS WEEK**

**Main Office (Barb Bash):** The office is open Tuesday, Wednesday, and Friday, 9:00–5:30. We are closed on July Fourth.

**Cantor Kyle** will be out from July 3–11 (but here next Sunday).

E-mail Kyle at [cantor@queenannelutheran.org](mailto:cantor@queenannelutheran.org).

**Pastor Dan** is away this week and will return July 13. He is still accessible by email and phone, and will attend to pastoral care or refer you for help as needed. Contact Pastor Dan by calling or texting 253.230.9695.

**Next Sunday, July 07, PASTOR JOHN MICHAEL BARICH** will be our guest pastor. Pastor Barich will also be serving as our pastor from September 1 through November 30, while Pastor Dan is away at Princeton.

Join Cantor Kyle for a **“POP-UP” CHOIR** on **Sunday, July 14**. Meet at 9:00 AM in the nave; we’ll sing during the 10:00 worship that same day. This is a great way to try choir for a day! Sign up in the narthex, or just “pop up” and come.