

25TH SUNDAY AFTER PENTECOST

November 10, 2024

10:30 AM



↑ = Stand **C**: Congregation **A**: Worship Assistant **P**: Presiding Minister

Hymns may be found in the red hymnals in the pews. • Large-print hymns are available in the narthex as you enter. • Quiet Bags with books and soft toys, or Doodle Bags with markers are available in the narthex for children.

Prelude

Settings of GOTT SEI GELOBET

("O Lord, We Praise You," ELW 499)

1. Chorale
2. Heinrich Scheidemann (ca. 1595–1663)
3. Johann Christoph Bach (1642–1703)

Introit

Psalm 107:8, 1, 2

O let them give thanks to you, LORD, for your steadfast love and your wonderful works for all people. Give thanks to the LORD, for the LORD is good, for God's mercy endures forever. Let the redeemed of the LORD proclaim that God redeemed them from the hand of the foe.

Welcome

↑ **Gathering Hymn**

Praise to the Lord, the Almighty
ELW 858

↑ **Greeting**

P: The grace of our Lord Jesus Christ, the love of God, and the communion of the Holy Spirit be with you all.

C: And also with you.

↑ Kyrie

Lord, have mer - cy. Lord, have mer - cy.

Lord, have mer - cy. Lord, have mer - cy.

Christ, have mer - cy. Christ, have mer - cy.

Christ, have mer - cy. Christ, have mer - cy.

Lord, have mer - cy. Lord, have mer - cy.

Lord, have mer - cy. Lord, have mer - cy.

Lord, have mer - cy, have mer - cy.

Lord, have mer - cy, have mer - cy.

↑Hymn of Praise



1 All glo - ry be to God on high, and peace to earth be
2 Lord Je - sus Christ, the on - ly Son of God, cre - a - tion's
3 To you a - lone, O God, we cry, the Ho - ly One we



giv - en! Let an - gels sing, let all re - ply; good -
au - thor, O Lamb of God, your death a - lone takes
name you; for you a - lone are God most high, one



will breaks forth from heav - en! Lord God Al - might - y,
sin a - way for - ev - er. Stretch out your arms to
liv - ing God we claim you: we wor - ship you, Lord



heav - en's king, we wor - ship you, our thanks we sing, we
ev - 'ry land, and, as you reign at God's right hand, re -
Je - sus Christ, with God the Spir - it ev - er blest, in



praise you for your glo - ry.
ceive our prayer; have mer - cy.
God the Fa - ther's glo - ry. A - men.

↑Prayer of the Day

P: The Lord be with you. **C**: And also with you.

P: Let us pray.

...through your Son, Jesus Christ, our Savior and Lord.

C: Amen.

First Reading

Isaiah 25:6-9

A: Word of God, Word of life.

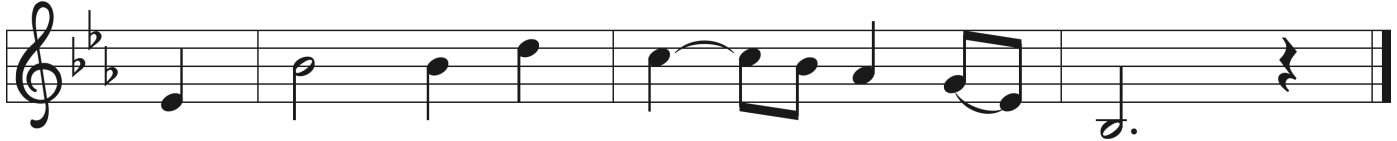
C: Thanks be to God.

Psalmody

Psalm 146

Refrain: The choir introduces the refrain; all repeat.

Then all repeat the refrain as indicated.



The LORD lifts up those who are bowed down.

Choir: regular verses; Congregation: boldface verses.



¹ Hal- | lelujah!

Praise the Lord, | O my soul!

² **I will praise the Lord as long | as I live;**

I will sing praises to my God while I | have my being.

³ Put not your | trust in rulers,
in mortals in whom there | is no help.

⁴ **When they breathe their last, they re- | turn to earth,**
and in that day | their thoughts perish. — REFRAIN

⁵ Happy are they who have the God of Jacob | for their help,
whose hope is in the | Lord their God;

⁶ **who made heaven and earth, the seas, and all that | is in them;**
who keeps promis- | es forever;

⁷ who gives justice to those who are oppressed,
and food to | those who hunger.
The Lord sets the | captive free.

⁸ **The Lord opens the eyes of the blind;**
the Lord lifts up those who | are bowed down;
the Lord | loves the righteous. — REFRAIN

⁹ The Lord cares | for the stranger;
the Lord sustains the orphan and widow,
but frustrates the way | of the wicked.

¹⁰ **The Lord shall | reign forever,**
your God, O Zion,
throughout all generations. | Hallelujah! — REFRAIN

Second Reading

Hebrews 9:24-28

A: Word of God, Word of life.

C: Thanks be to God.

↑ **Gospel Acclamation**



Al - le - lu - ia. Lord, to whom shall we go?



You have the words of e - ter - nal life. Al - le - lu - ia.

↑ **The Holy Gospel**

Mark 12:38-44

P: The Gospel according to St. Mark.

C: Glory to you, O Lord.

Following the reading

P: The Gospel of the Lord.

C: Praise to you, O Christ.

Sermon

Pastor John Michael Barich

↑ **Hymn of the Day**

Lord of Glory, You Have Bought Us
ELW 707

↑ Apostles' Creed

C: I believe in God, the Father almighty,
creator of heaven and earth.

I believe in Jesus Christ, God's only Son, our Lord,
who was conceived by the Holy Spirit,
born of the virgin Mary,
suffered under Pontius Pilate,
was crucified, died, and was buried;
he descended to the dead.

On the third day he rose again; he ascended into heaven,
he is seated at the right hand of the Father,
and he will come to judge the living and the dead.

I believe in the Holy Spirit,
the holy catholic church,
the communion of saints,
the forgiveness of sins,
the resurrection of the body,
and the life everlasting.

Amen.



The Apostles' Creed emphasizes the full humanity of Christ (e.g., he was born, suffered, and died) in response to one of the earliest heresies, namely, the view that Christ only "appeared" to be human. Why? Detractors believed that the Spirit of God, which is good, could not dwell in a material or physical body, which is evil. When we profess the Apostles' Creed, following Jewish tradition, we insist otherwise. The world God made is good! With great joy and without contradiction, therefore, we can say with John 1:14 that "the Word became flesh and dwelled among us."

Prayers of the Church *(please be seated or kneel)*

A: . . . Lord, in your mercy.

C: Hear our prayer.

↑ Sharing of Peace

P: The peace of Christ be with you always.

C: And also with you.

Holy Communion –

All who seek a taste of the new and forgiven life in Jesus Christ are welcome to receive the sacrament. We confess and believe that Christ, who fills all things, come to us in a special way through the Sacrament of Bread and Wine, and that by sharing in this meal, we share in Christ's real presence among us.

The ministration of the Sacrament is given in two ways:

By intinction:

When prompted by the ushers, come down the center aisle to kneel at the railing; please sanitize your hands.

Receive a wafer in your hands. Dip the bread in the wine chalice before partaking. Use the outside aisle to return to your seat.

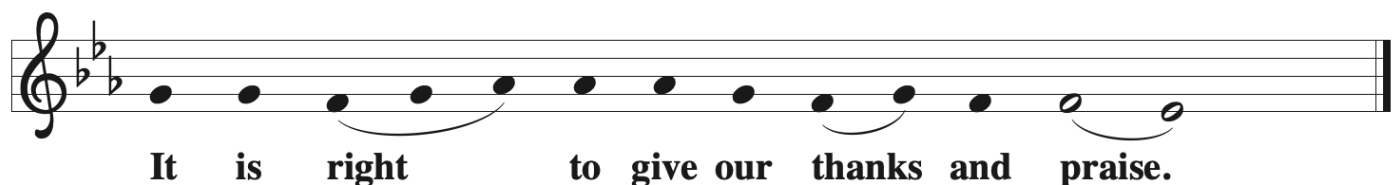
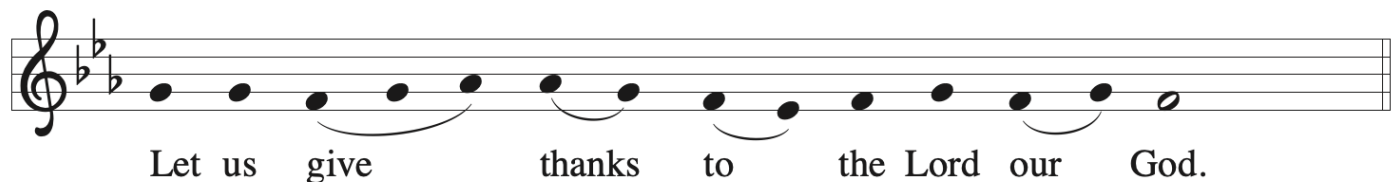
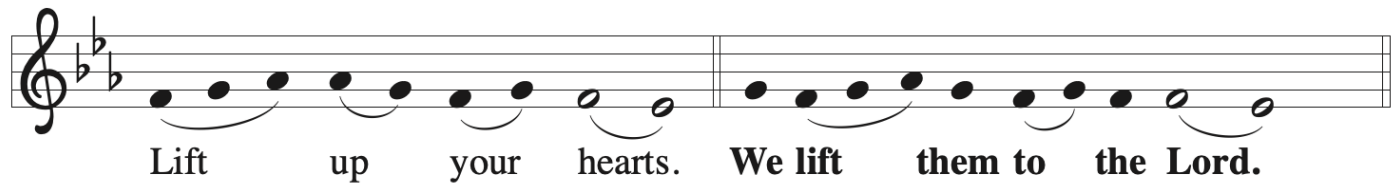
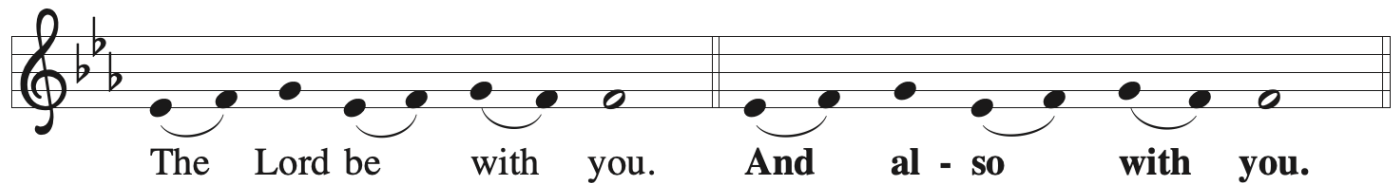
In the pew:

You may commune in the pews with individual elements. These are available just inside as you enter the sanctuary.

Need Gluten-free bread or grape juice? These options are available on this individual elements table.

During distribution, peel off the bottom tab to eat the bread; peel off the top tab to drink the wine. Dispose of the container in the narthex after worship.

↑ The Great Thanksgiving



P: It is our duty and delight and join their unending hymn:

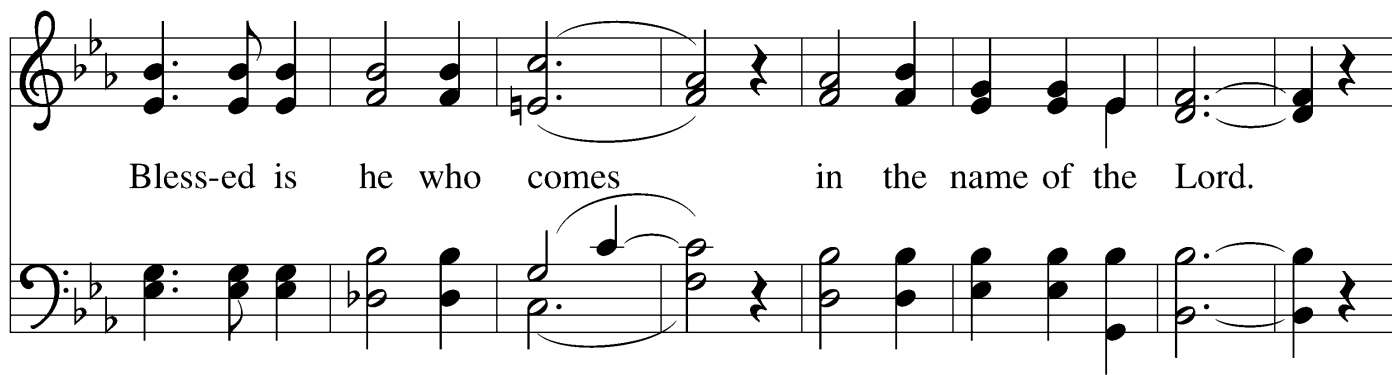
↑ **Sanctus**

Ho - ly, ho - ly, ho - ly Lord, God of pow'r and might,

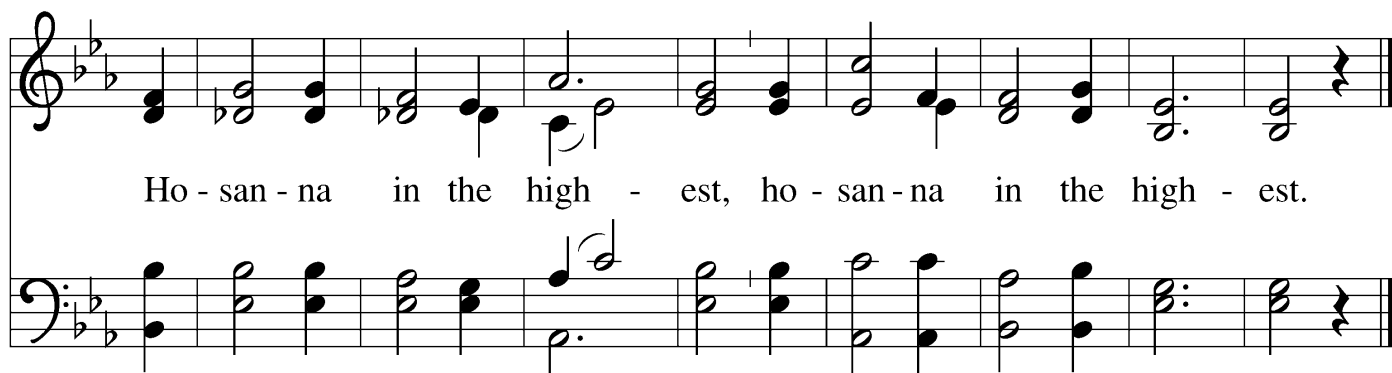
ho - ly, ho - ly, ho - ly Lord, God of pow'r and might,

heav-en and earth are full, full of your glo - ry.

Ho - san - na in the high - est, ho - san - na in the high - est.



Bless-ed is he who comes in the name of the Lord.



Ho - san - na in the high - est, ho - san - na in the high - est.

↑ **Words of Institution**

↑ **Lord's Prayer**

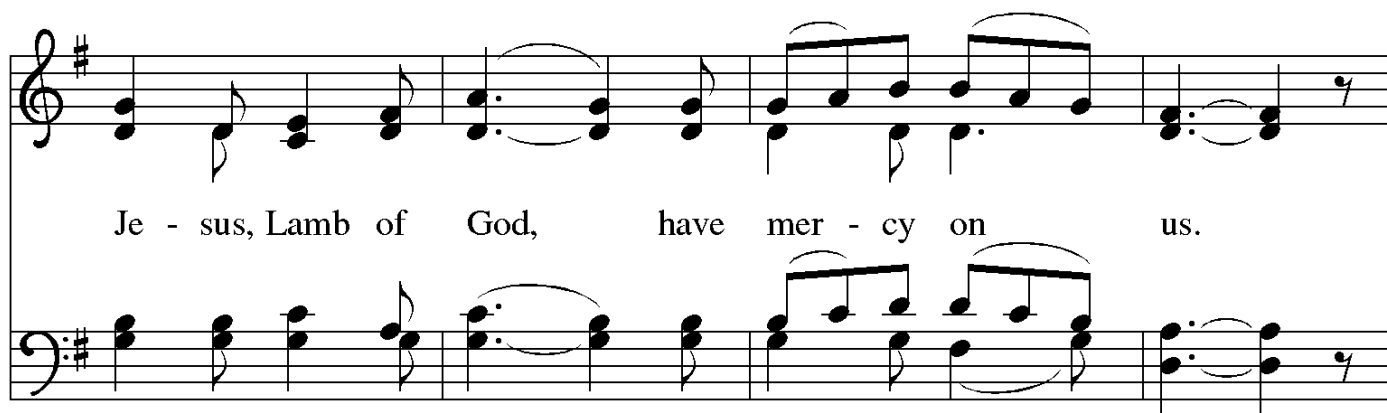
P: Knowing we are loved,
let us pray the prayer Jesus taught us:

C: **Our Father in heaven,**
hallowed be your name,
your kingdom come, your will be done,
on earth as in heaven.
Give us today our daily bread
and forgive us our sins
as we forgive those who sin against us.
Save us from the time of trial
and deliver us from evil.
For the kingdom, the power, and the glory are yours,
now and forever. Amen.

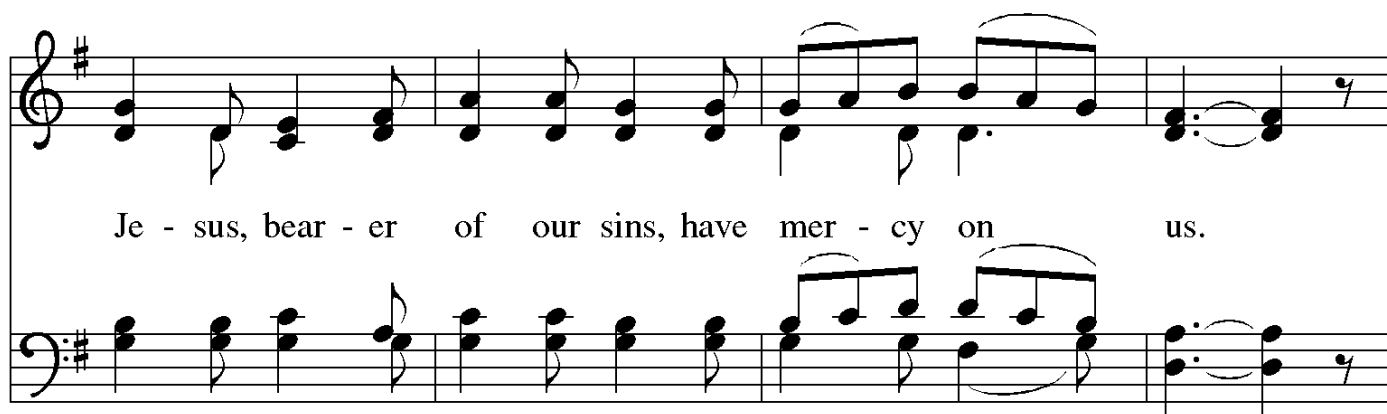
Invitation to the Table

P: Come and taste the joy of God!

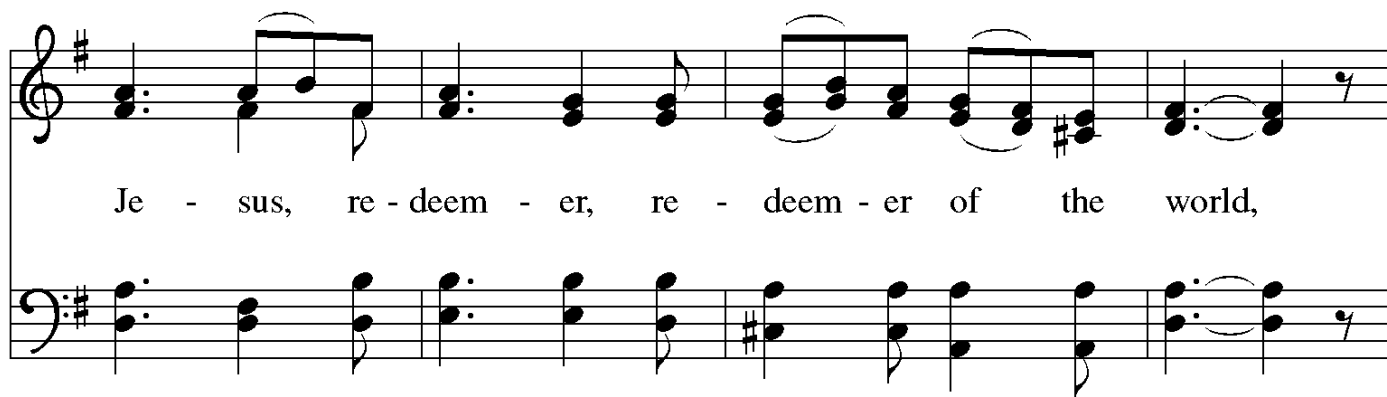
Agnus Dei



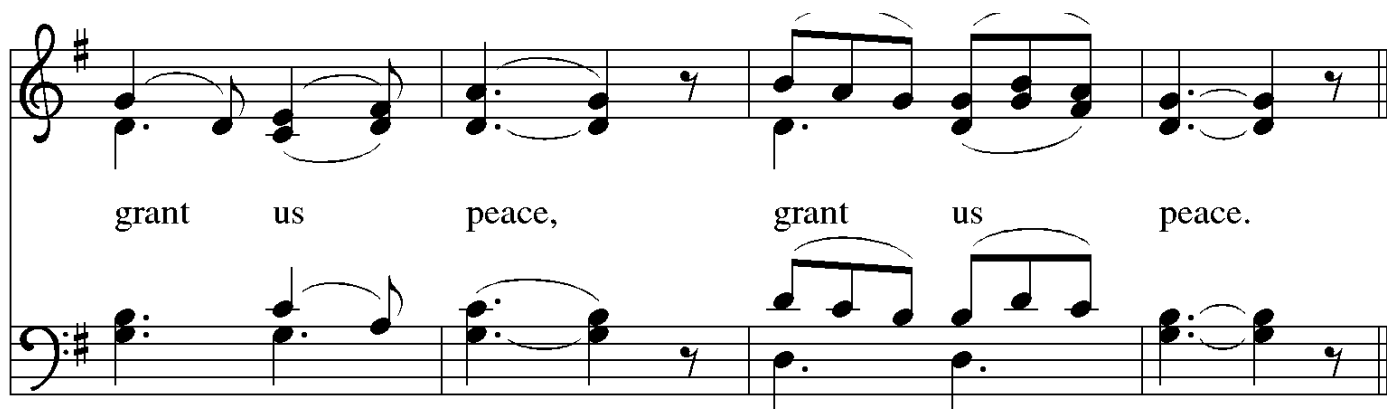
Je - sus, Lamb of God, have mer - cy on us.



Je - sus, bear - er of our sins, have mer - cy on us.



Je - sus, re - deem - er, re - deem - er of the world,



grant us peace, grant us peace.

Distribution Hymn

The choir sings stanza 1; all join for stanzas 2 and 3.

O Lord, We Praise You

ELW 499

↑ Post Communion Prayer

P: Faithful God,

you have spread before us a feast of rich food and drink
in the body and blood of your Son.

Now send us out to labor with you,
in service to the world you have made,
and among the people you have made your home,
in Jesus Christ, our Savior and Lord.

C: Amen.

Announcements

↑ Benediction

P: The Lord bless you and keep you.

The Lord make his face to shine on you
and be gracious to you.

The Lord look upon you with favor and ☩ grant you peace.

C: Amen.

↑ Sending Hymn

On What Has Now Been Sown

ELW 550

↑ Dismissal

A: Go in peace. Be Christ to your neighbor.

C: Thanks be to God.

Postlude

Hymn-Prelude on DARWALL'S 148TH
("On What Has Now Been Sown," ELW 550)

About Today's Music

On this day in 1483 Martin Luther was born in Eisleben, Saxony (now Saxony-Anhalt, Germany). Today at the 10:30 service we sing a hymn during Communion that may be new to most of you, "O Lord, We Praise You" (ELW 499). It dates to the time of Luther, and the organ prelude at both services is based on it. Luther's starting point was a popular one-stanza hymn that predates the Reformation. Hymnologist Paul Westermeyer writes, "Luther, like the lay people who loved to sing it, thought this was a worthy hymn, and he added two stanzas. The result is, with its tune, a classic chorale for holy communion." I have childhood memories of the hymn being presented at a slow and unfortunate tempo; I find the hymn works well when its dance-like characteristics are allowed to shine, underscoring the text's celebration of what Christ has done for us and continues to do for us.

– Cantor Kyle

Evangelical Lutheran Worship, Settings Three, Four, and Five © 2006 Augsburg Fortress. Reprinted with permission under License 26521. Psalm refrain reproduced from Psalter for Worship Year B © 2008 Augsburg Fortress

ANNOUNCEMENTS —SUNDAY, NOVEMBER 10, 2024

WELCOME! Please fill out a CONNECT card if you are visiting us today, if you wish to receive our emails or newsletter, or if you'd like the pastor to contact you. Use PRAY cards for prayer requests. Place cards in the offering plate as you leave.

ALTAR FLOWERS are provided today by the Smith family In celebration of Mac's birthday and in thanksgiving for his 96 year old mother, Joyce. Glory be to God.

FELLOWSHIP TODAY: Please stay after the 10:30 service for conversation in the narthex, with thanks to the McCulloughs for hosting.

DONATE TO HELP SHIP QUILTS: The LWR Ingathering was held yesterday, and our quilts and kits were contributed for Lutheran World Relief efforts. We cover the costs of shipping our quilts and kits. If you would like to help, please mark your offering envelope and the memo line of your check "LWR Shipping."

PICK UP THE NEWEST ISSUE OF *THE QUILL*, covering November and December events, now available in the church narthex and online at our website, queenannelutheran.org.

EVERY MEMBER VISITS FOR AUTUMN: Please sign up in the narthex if you would like to welcome the pastor into your home for a 30-40 min. visit.



COMMUNITY LUNCH ON CAPITOL HILL, four Tuesdays in November, **begins this Tuesday**. QALC members and friends are encouraged to volunteer for food preparation in the kitchen (9:00-

11:30) and/or to serve and help clean up (11:00-1:15). We're seeking to sign up 6 or more people for each session. **Look for sign-up sheets in the narthex or contact Jim Margard** at jrm952@gmail.com or 206-920-7704. (Jim will be at both sessions each Tuesday except 11/19.) Community Lunch is located at All Pilgrims Church at Broadway and Republican. Parking on Broadway or on 10th Ave. is usually easy to find and there are a few parking spots at Homestreet Bank nearby at Roy and 10th Ave. that we can use.

THANKSGIVING MEALS FOR SENIORS – A Grocery List for You!

As we did last year, this November we will be collecting grocery bags full of Thanksgiving items for seniors in need on Queen Anne Hill. The bags will be collected in our narthex through Sunday, Nov. 24, and delivered to Queen Anne Helpline in the days just before Thanksgiving. The list of items is in *the Quill*; some are also printed out in the narthex.



11/29: "FIFTH FRIDAY" DINNERS AT NEW HORIZONS CONTINUE: Our next date to provide a meal is Friday, November 29, which is the day after Thanksgiving. Please mark your calendar now and contact Jim Margard if you are able to provide dessert, fruit, or bread for the guests at this amazing youth ministry

FORUM 11/17: My Time in Bushasha with Twegashe School – Over the summer, I was given the opportunity to travel to Tanzania with 11 of my classmates. Through my school's Global Service Learning program, we spent a month living with host families and serving the community through our work at Twegashe school founded and run by our friends Michael and Jeanette Banobi. Our service consisted of planning and running an educational summer camp for 90 second-through-fourth-grade students. The days were filled with lots of learning, much of which was really the kids teaching us. I'm excited to share my story with you.
— Jimmy Porter

OUR LITTLE FREE LIBRARY has many visitors who are often looking for **young adult and kids' books and early readers**.

FREE!* LIVE's 2024-25 COURSES: Check out the upcoming courses on the narthex table, or online at lutheransnw.org/ministries/the-live-project

***Register with Promo: LIVEBUNDLE2024**



DECEMBER 1 • AFTER 10:30 WORSHIP • IN THE NARTHEX

The first Sunday in Advent is a time to prepare and celebrate! December 1 will also be a special time for us to honor the presence and service of our Interim Pastor John Michael Barich on his last Sunday! We'll have Advent devotionals available, as well as take-home materials and crafts for families with children. **And, lots of delicious seasonal treats, sweet or savory!** What's in your family's tradition? Lefse, potato sausage, leche flan, pizelles, julekake, budin, lebkuchen...oh, my! Store-bought treats are fine, too! Sign up in the narthex if you'd like to help make the festivities happen. If you have questions, talk to Lynn Hofstad or Sallie Wilson.

ADVENT WORSHIP, WEDNESDAYS AT NOON

Pivot and center yourself, mid-day and midweek, for a brief Service of Responsive Prayer in our beautiful chapel. Wednesdays, December 4, 11, and 18.

GREENING OF THE CHURCH

ON SUNDAY, DECEMBER 8— Help us decorate the sanctuary and narthex for the season. Details yet to come.

CHRISTMAS CAROLING SATURDAY DECEMBER 14 AT 3:30 PM

Join Cantor Kyle, your neighbors, and friends under the breezeway for Christmas carols and refreshments. Caroling books will be provided. No singing experience necessary. Come as you are!



THIS WEEK'S CALENDAR

Sunday, November 10

Worship	8:00 AM
Worship	10:30 AM

Monday – Veterans' Day

PDQ Quilting (<i>downstairs</i>)	5:30 PM
Food Addicts in Recovery (<i>FH</i>)	7:00 PM

Tuesday (office closed)

Community Lunch on CH Council (<i>Conf. Rm</i>)	9AM-1:15 PM
ALZ Caregivers' Support (<i>Chapel Conf. Rm.</i>)	7:00 PM

Wednesday (office open)

Sewing & Service (<i>downstairs</i>)	10:00 AM
AA Counterbalance (<i>FH</i>)	7:30 PM

Thursday (office open)

Staff Mtg. (<i>library</i>)	10:30 AM
Choir Rehearsal (<i>Music Rm</i>)	7:00 PM

Saturday

Alanon (<i>upstairs</i>)	10:30 AM
AA Shanty Trudgers (<i>upstairs</i>)	7:00 PM

Sunday, November 17

Worship	8:00 AM
Forum	9:00 AM
Worship	10:30 AM
Monster Golf (<i>offsite</i>)	4:00 PM

OFFICE HOURS THIS WEEK

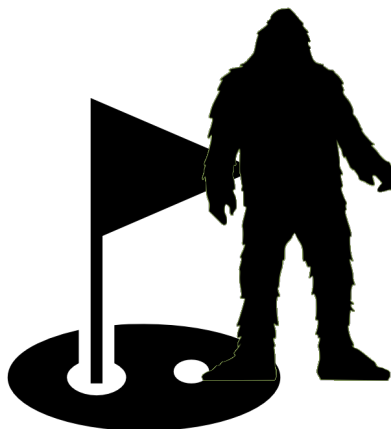
Main Office: The office is open Wednesdays and Thursdays each week. Contact Pastor Barich if you need access or an appointment. Office phone is 206-284-1960, and voice messages will be received; Barb is working remotely in Minnesota and can be reached by email at admin@queenannelutheran.org or by text at 206-305-1094.

Pastor John Michael Barich will be available Tuesday, Wednesday and Thursday.

To contact him, call the office or e-mail pastorbarich@queenannelutheran.org. For emergency pastoral care, text him at 206-422-1974.

Cantor Kyle will be in the office on Wednesday and Thursday afternoon and evening. E-mail Kyle at cantor@queenannelutheran.org.

Lynn Hofstad will be in her library office on Wednesday and Thursday of the coming week. E-mail Lynn at programming@queenannelutheran.org.



MONSTER GOLF & PIZZA IN BELLEVUE!

A Project Phoenix outing for MS & HS students

Sunday, November 17, 2024

4:00 PM Meet at the Ballard First Lutheran Church parking lot, (2006 NW 65th St., Seattle)

5:00 PM Golf

6:00 PM Pizza & Chat

8:30 PM Pick-up, back at Ballard First Lutheran

Reserve your spot here: <https://bit.ly/1117monstergolf>