

FIRST SUNDAY AFTER CHRISTMAS

December 29, 2024

10:30 AM



↑ = Stand **C**: Congregation **A**: Worship Assistant **P**: Presiding Minister

Hymns may be found in the red hymnals in the pews. • Large-print hymns are available in the narthex as you enter. • Quiet Bags with books and soft toys, or Doodle Bags with markers are available in the narthex for children.

Prelude:

Gésu Bambino
Pietro Yon

Welcome

↑ **Gathering Hymn**

What Child Is This
ELW, Hymn 296

P: In the name of the Father, and of the + Son, and of the Holy Spirit.

C: Amen.

P: Glory to God in the Highest!

C: And on earth peace to all on whom God's favor rests!

P: Sing to the Lord a new song.

C: For God has done marvelous things.

P: Shout for joy to the Lord, all the earth;

C: Burst into jubilant song with music:

↑ **Hymn of Praise**

Angels, We Have Heard on High
ELW, Hymn 289

↑ **Prayer of the Day**

P: Shine into our hearts the light of your wisdom,
O God, and open our minds to the knowledge of your word,
that in all things we may think and act according to your good will
and may live continually in the light of your Son, Jesus Christ,
who lives and reigns with you and the Holy Spirit,
one God, now and forever.

C: Amen.

First Reading

1 Samuel 2:18-20, 26

A: Word of God, Word of life.

C: Thanks be to God.

Second Reading

Colossians 3:12-17

A: Word of God, Word of life.

C: Thanks be to God.

↑ **Gospel Acclamation**

Angels, From the Realms of Glory

Stanzas 1 and 2

ELW, Hymn 275



1 An - gels, from the realms of glo - ry, wing your flight o'er all the earth;
2 Shep-herds, in the fields a - bid - ing, watch - ing o'er your flocks by night,



once you sang cre - a - tion's sto - ry, now pro - claim Mes - si - ah's birth:
God with us is now re - sid - ing, yon - der shines the in - fant light.

Refrain



Come and wor-ship, come and wor-ship, wor-ship Christ, the new-born king.

↑ **The Holy Gospel**

Luke 2:41-52

P: The Gospel according to St. Luke.

G: **Glory to you, O Lord.**

After the reading

P: The Gospel of the Lord.

G: **Praise to you, O Christ.**

Sermon

Pastor Dan Peterson

↑ **Hymn of the Day**

Beloved, God's Chosen

ELW, Hymn 648

↑ **Apostles' Creed**

G: **I believe in God, the Father almighty,
creator of heaven and earth.**

**I believe in Jesus Christ, God's only Son, our Lord,
who was conceived by the Holy Spirit,
born of the virgin Mary,
suffered under Pontius Pilate,
was crucified, died, and was buried;
he descended to the dead.**

**On the third day he rose again; he ascended into heaven,
he is seated at the right hand of the Father,
and he will come to judge
the living and the dead.**

**I believe in the Holy Spirit,
the holy catholic church,
the communion of saints,
the forgiveness of sins,
the resurrection of the body,
and the life everlasting.**

Amen.



Prayers of the Church *(please be seated or kneel)*

A: . . . Lord, in your mercy.

C: Hear our prayer.

↑ Sharing of Peace

P: The peace of Christ be with you always.

C: And also with you.

Holy Communion – All people who seek a taste of the new and forgiven life in Jesus Christ are welcome to receive the sacrament. We confess and believe that Christ, who fills all things, comes to us in a special way through the Sacrament of Bread and Wine and that by sharing in this meal, we share in Christ’s real presence among us.

The ministration of the Sacrament is given in two ways:

In the pew:

You may commune in the pews with individual elements. These are available in the narthex as you enter.

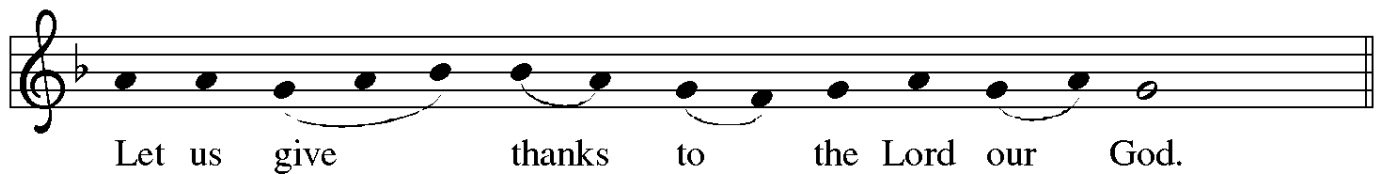
When invited to commune, peel off the bottom tab to eat the bread; peel off the top tab to drink the wine. The waste can go in the paper bag found in each pew.

By intinction:

When prompted by the ushers, come down the center aisle to kneel at the railing; please sanitize your hands.

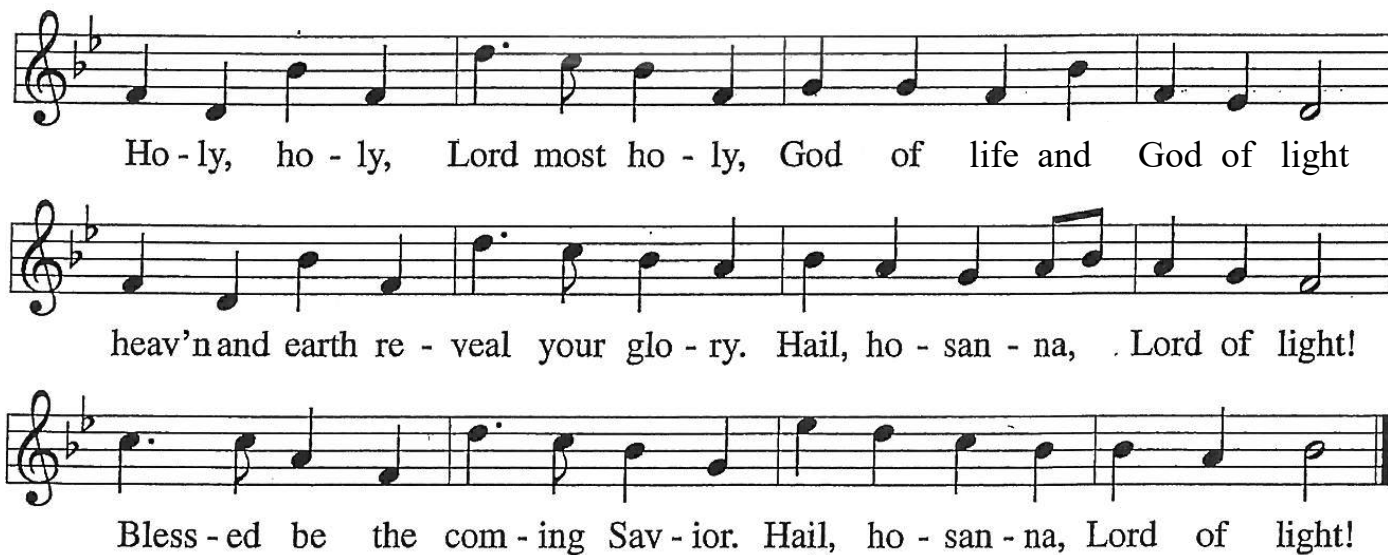
Receive a wafer in your hands. Dip it in a chalice, either wine or grape juice, before partaking. Use the outside aisle to return to your seat.

↑ The Great Thanksgiving



P: It is indeed right, our duty and our joy . . .
. . . praise your name and join their unending hymn:

Sanctus:



Ho - ly, ho - ly, Lord most ho - ly, God of life and God of light
heav'n and earth re - veal your glo - ry. Hail, ho - san - na, Lord of light!
Bless - ed be the com - ing Sav - ior. Hail, ho - san - na, Lord of light!

↑ Words of Institution

↑ The Lord's Prayer

P: Lord, remember us in your kingdom and teach us to pray:

C: **Our Father in heaven, hallowed be your name,
your kingdom come, your will be done,
on earth as in heaven.
Give us today our daily bread.
Forgive us our sins
as we forgive those who sin against us.
Save us from the time of trial and deliver us from evil.
For the kingdom, the power, and the glory are yours,
now and forever. Amen.**

↑ Invitation to the Table

P: Glory to God in the highest!
Come to the table of peace.

Agnus Dei



Lamb of God, you take a-way the sin of the world; have mer-cy on



us. Lamb of God, you take a-way the sin of the world; have



mer-cy on us. Lamb of God, you take a-way the



sin of the world; grant us peace, grant us peace.

Distribution Music

O Holy Night
Adolphe Adam

↑ Distribution Hymn

What Feast of Love
ELW, Hymn 487

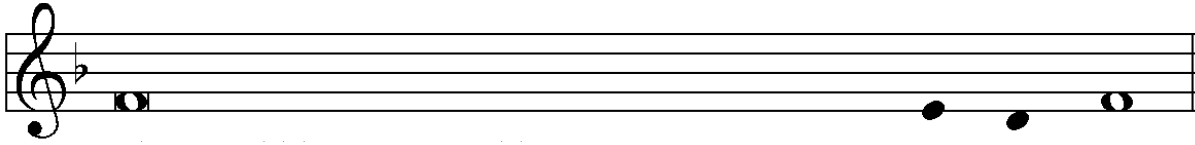
↑ Post-Communion Prayer

P: God our redeemer,
you have fed us at this table
with gifts of grace, truth, and life.
As you have gathered us in joy,
send us forth as messengers of your peace.
Make us shine with the good news of your glory,
born to us in Jesus Christ, our Savior and Lord.

C: Amen.

Announcements

↑ Benediction



P: The Lord bless you and keep you.
The Lord make his face to shine on you
and be gracious to you.
The Lord look upon you with favor and † grant you peace.



C: A - men.

↑ Sending Hymn

Go, Tell It on the Mountain
ELW, Hymn 290

↑ Dismissal

A: Christ the Savior is born!
Go in peace to love and serve the Lord.

C: Thanks be to God!

Postlude

ANNOUNCEMENTS — DECEMBER 29 , 2024

WELCOME! Please fill out a CONNECT card if you are visiting us today, if you wish to receive our emails or newsletter, or if you want the pastor to contact you. PRAY cards may be used for prayer requests. Place cards in the offering plate.

TODAY WE WELCOME GUEST ORGANIST VALERIE SHIELDS; many thanks for your music!

We are also grateful to **ETHAN IBSEN**, this morning's soloist. Ethan is a member of Green Lake Church, where Valerie serves as Minister of Music.

Ethan sings with the NW Boychoir. He recently sang in *The Snowman* with the Seattle Symphony Orchestra and will sing in Seattle Opera's production of *The Magic Flute*. On **January 4** he will sing the lead in *Amahl and the Night Visitors* at Green Lake Church at 11 AM and 4 PM. There is no charge, but offerings at the door are welcome. Mary's Place will receive half of the offering.

FELLOWSHIP CONTINUES after worship. Today is a "no host" coffee hour; special thanks to anyone who shares treats or makes coffee.

COMPASS HOUSING ALLIANCE CHRISTMAS DRIVE – TOWELS & JACKETS

Thank you for bringing clean used or new towels to church for deliveries to Compass Housing Alliance Hygiene Center and shelters this Thursday, January 2. **Toiletry products** are also welcome. Hygiene facilities at CHA are supported, in part, through your generosity. Sam Townsend from Compass writes that they are also collecting **winter jackets and gift cards!** To order these items online, click on the link for their Amazon wish-list in your Friday email.

FORUM @ 9 NEXT SUNDAY, JANUARY 5, 2025: My Time at Princeton



Join Pastor Dan in the Conference Room as he shares about his experience at Princeton Seminary, including the courses he audited, as well as the writing and research he's undertaken. Zoom option available to attend as well.

THIS WEEK'S CALENDAR

Sunday, December 29

First Sunday after Christmas

Worship 10:30 AM

Monday

Food Addicts in Recovery (FH) 7:00 PM

Wednesday (Office Closed)

Happy New Year!

AA Counterbalance (FH) 7:30 PM

Saturday

Alanon (upstairs) 10:30 AM

AA Shanty Trudgers (upstairs) 7:00 PM

Sunday, January 5

Second Sunday after Christmas

Worship 8:00 AM

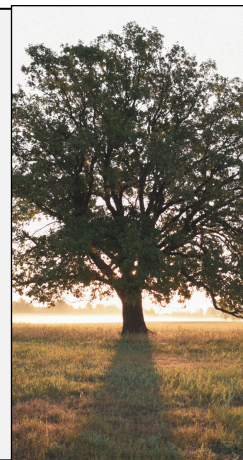
Forum (Conf. Rm./Zoom) 9:00 AM

Worship 10:30 AM

SATURDAY, JANUARY 11 @ 10:00 AM: SEATTLE SEEKERS

Eager to explore life's big questions? Searching for a sense of belonging?

Join us every month for meaningful discussion and connection over a light breakfast as we delve into life's big questions and the quest for meaning. Our group offers a unique blend of insights, drawing from both secular perspectives and Christian teachings to cultivate a holistic understanding of spirituality, ethics, and purpose. Whether you're a believer, skeptic, or somewhere in between, all are welcome.



NOTE: Sewing & Service Quilting will return to meet next Wednesday, January 8.

OUR LITTLE FREE LIBRARY, which Christian Louie and his Boy Scout troop built for his Eagle Scout service project, has many visitors who are often looking for young adult and kids' books and early readers. Drop donations to Lynn or leave in the Chapel Conference Room bookshelves

OFFERING ENVELOPE SETS FOR 2025 are on the round table by the elevator for certain households. Please talk to Sallie Wilson if you would like a set.

OFFICE HOURS THIS WEEK

Main Office: The office will be open Tuesday, Thursday, and Friday, 9:00–5:30. Barb Bash can be reached at admin@queenannelutheran.org or by phone at 206-284-1960.

Note: Barb will be away in Minnesota from January 4 through 19. During those two weeks, the office will be open Wednesday and Thursday only; best to call before you come by. Barb will be working remotely as she was this fall, and you can email her at admin@queenannelutheran.org.

Cantor Kyle will be away through January 7, but will play at the 01/05/2025 worship. E-mail him at cantor@queenannelutheran.org.

Lynn Hofstad will be in on Thursday, January 2. E-mail Lynn at programming@queenannelutheran.org.

Pastor Dan Peterson will be available Tuesday, Wednesday, Thursday, Saturday and Sunday. To contact him, e-mail pastor@queenannelutheran.org. For emergency pastoral communications, text him at 253-230-9695.

END-OF-YEAR GIVING: If you are planning to make a special gift at the end of the year to further the mission and ministry of Queen Anne Lutheran, note that **Hand-delivered donations** must be received in the church office **BY 5 PM THIS TUESDAY, DECEMBER 31** in order for your gifts to be included on your 2024 Giving Statement.

Mailed donations must be mailed with a "2024" postmark.

Online donations must be posted as a credit card or PayPal transaction dated by 12/31/2024. The QR Code here links to our website's GIVE page:

