

BAPTISM OF OUR LORD

January 12, 2025

10:30 AM

↑ = *Stand* **C**: *Congregation* **A**: *Worship Assistant* **P**: *Presiding Minister*

Hymns may be found in the red hymnals in the pews. • Large-print hymns are available in the narthex as you enter. • Quiet Bags with books and soft toys, or Doodle Bags with markers are available in the narthex for children.

Prelude:

Introit

Psalm 45:7, 1

You have loved righteousness and hated iniquity; therefore God, your God, has anointed you with the oil of gladness above your fellows. My heart overflows with a good matter; I speak of the things which I have made concerning the King.

Welcome

↑ Pastoral Greeting

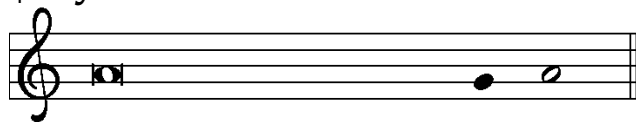
P: The grace of our Lord Jesus Christ, the love of God, and the communion of the Holy Spirit be with you all.

C: And also with you.

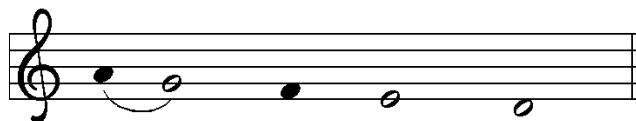
↑ Gathering Hymn

Crashing Waters at Creation
ELW 455

↑ Kyrie



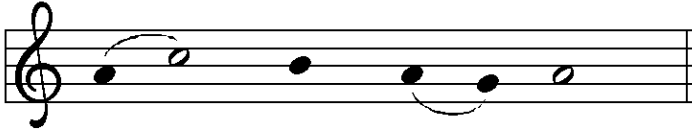
In peace, let us pray to the Lord.



Lord, have mer - cy.



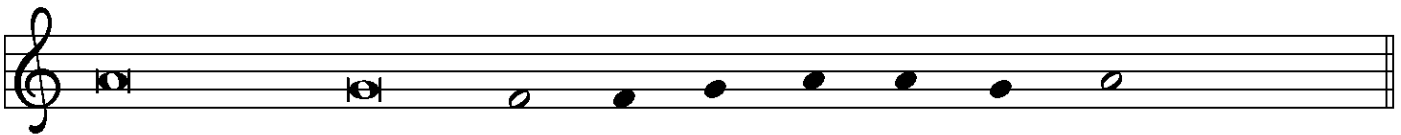
For the peace from a-bove, and for our sal - vation, let us pray to the Lord.



Lord, have mer - cy.



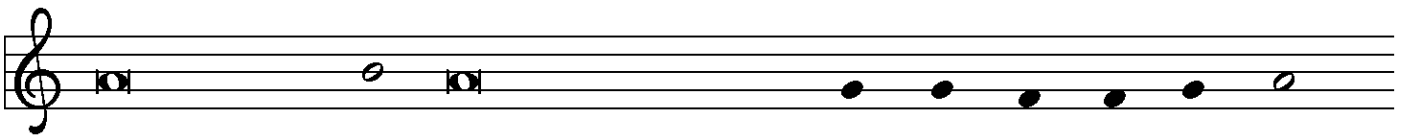
For the peace of the whole world, for the well-being of the church of God,



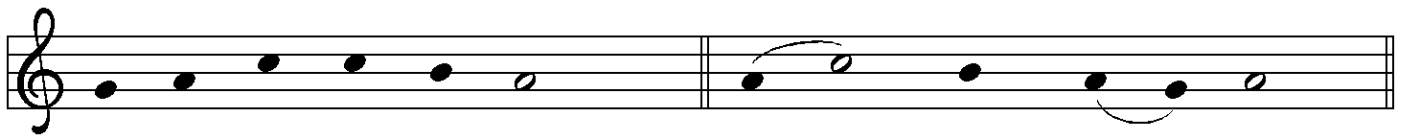
and for the unity of all, let us pray to the Lord.



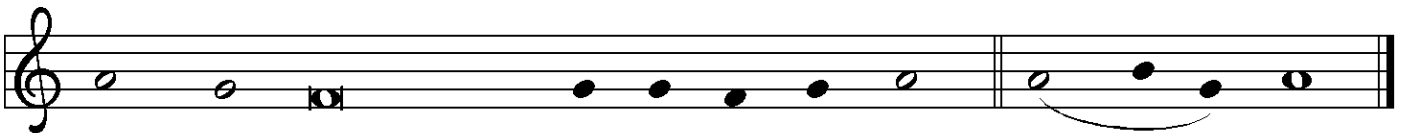
Lord, have mer - cy.



For this holy house, and for all who offer here their wor-ship and praise,

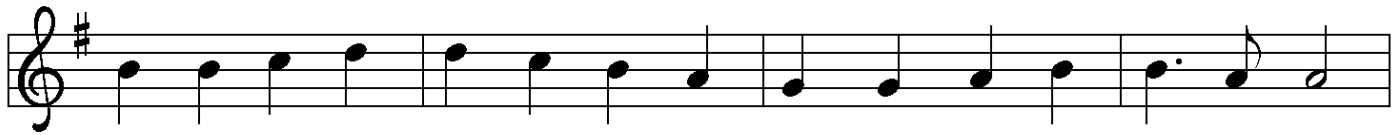


let us pray to the Lord. Lord have mer - cy.



Help, save, comfort, and de - fend us, gra-cious Lord. A - men.

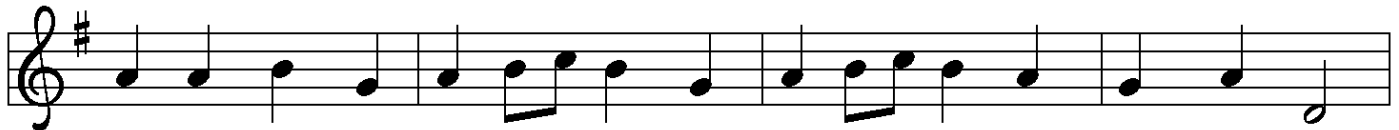
↑ Hymn of Praise



1 Glo-ry be to God in heav-en; peace, good-will to all the earth.
2 Glo-ry be to Christ for - ev - er, Lamb of God and Lord of love.
3 Ho - ly One we now ac-claim you; Lord a - lone, to you we call;



Might-y God of all cre - a - tion, Fa - ther of sur - pass - ing worth:
Son of God and gra-cious Sav - ior, you have come from heav'n a - bove;
Ho - ly One in faith we name you, God most high, yet near to all:



we ex - alt you, we a - dore you, we lift high our thanks and praise.
on the cross you died to save us; now you reign at God's right hand.
Je - sus Christ, with God the Spir - it, in the Fa - ther's splen - dor bright.



Saints and an - gels bow be - fore you; here on earth our songs we raise.
Hear our prayer; re - store, for - give us; in your prom - ise firm we stand.
For the peace that we in - her - it, glo - ry be to God on high!

↑ Prayer of the Day

P: Let us pray....
..., one God, now and forever.

C: Amen.

First Reading

Isaiah 43:1-7

A: Word of God, Word of life.

C: Thanks be to God.

Psalmody

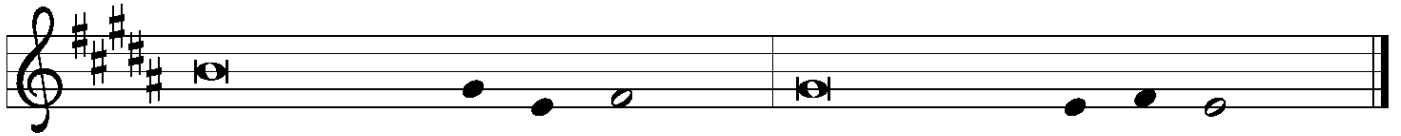
Psalm 29

To begin the psalm, the Choir sings the Refrain and all repeat. Thereafter, the Congregation sings the Refrain as indicated.

REFRAIN



Choir: regular verses; Congregation: boldface verses.



- 1 Ascribe to the | LORD, you gods,
ascribe to the LORD glo- | ry and strength.
- 2 **Ascribe to the LORD the glory | due God's name;**
worship the LORD in the beau- | ty of holiness.
- 3 The voice of the LORD is upon the waters;
the God of | glory thunders;
the LORD is upon the | mighty waters.
- 4 **The voice of the LORD is a pow- | erful voice;**
the voice of the LORD is a | voice of splendor. REFRAIN
- 5 The voice of the LORD breaks the | cedar trees;
the LORD breaks the ce- | dars of Lebanon;
- 6 **the LORD makes Lebanon skip | like a calf,**
and Mount Hermon like a | young wild ox.
- 7 The voice | of the LORD
bursts forth in | lightning flashes.
- 8 **The voice of the LORD | shakes the wilderness;**
the LORD shakes the wilder- | ness of Kadesh. REFRAIN
- 9 The voice of the LORD makes the oak trees writhe
and strips the | forests bare.
And in the temple of the LORD all are | crying, "Glory!"
- 10 **The LORD sits enthroned a- | bove the flood;**
the LORD sits enthroned as king for- | evermore.
- 11 O LORD, give strength | to your people;
give them, O LORD, the bless- | ings of peace. REFRAIN

Second Reading

Acts 8:14-17

A: Word of God, Word of life.

C: Thanks be to God.

↑ Gospel Acclamation



Al - le - lu - ia. Lord, to whom shall we go?



You have the words of e - ter - nal life. Al - le - lu - ia.

↑ The Holy Gospel

Luke 3:15-17, 21-22

P: The Gospel according to St. Luke.

C: Glory to you, O Lord.

After the reading

P: The Gospel of the Lord.

C: Praise to you, O Christ.

Sermon

Pastor Chelsea Globe

↑ Hymn of the Day

Come, Beloved of the Maker

*Stanza 1 is sung by a leader or the choir;
all join at stanza 2.*

ELW 306

↑ Apostles' Creed

C: I believe in God, the Father almighty,
creator of heaven and earth.

I believe in Jesus Christ, God's only Son, our Lord,
who was conceived by the Holy Spirit,
born of the virgin Mary,
suffered under Pontius Pilate,
was crucified, died, and was buried;
he descended to the dead.

On the third day he rose again; he ascended into heaven,
he is seated at the right hand of the Father,
and he will come to judge
the living and the dead.

I believe in the Holy Spirit,
the holy catholic church,
the communion of saints,
the forgiveness of sins,
the resurrection of the body,
and the life everlasting.

Amen.



The Apostles' Creed emphasizes the full humanity of Christ (e.g., he was born, suffered, and died) in response to one of the earliest heresies, namely, the view that Christ only "appeared" to be human. Why? Detractors believed that the Spirit of God, which is good, could not dwell in a material or physical body, which is evil. When we profess the Apostles' Creed, following Jewish tradition, we insist otherwise. The world God made is good! With great joy and without contradiction, therefore, we can say with John 1:14 that "the Word became flesh and dwelled among us."

Prayers of the Church *(please be seated or kneel)*

A: . . . Lord, in your mercy.

C: Hear our prayer.

↑ Sharing of Peace

P: The peace of Christ be with you always.

C: And also with you.

Holy Communion – All baptized people who seek a taste of the new and forgiven life in Jesus Christ are welcome to receive the sacrament. We confess and believe that Christ, who fills all things, comes to us in a special way through the Sacrament of Bread and Wine and that by sharing in this meal, we share in Christ’s real presence among us.

The ministration of the Sacrament is given in two ways:

In the pew:

You may commune in the pews with individual elements. These are available in the narthex as you enter.

When invited to commune, peel off the bottom tab to eat the bread; peel off the top tab to drink the wine. The waste can go in the paper bag found in each pew.

By intinction:

When prompted by the ushers, come down the center aisle to kneel at the railing; please sanitize your hands.

Receive a wafer in your hands. Dip it in a chalice, either wine or grape juice, before partaking. Use the outside aisle to return to your seat.

↑ **The Great Thanksgiving**

The Lord be with you. And al - so with you.

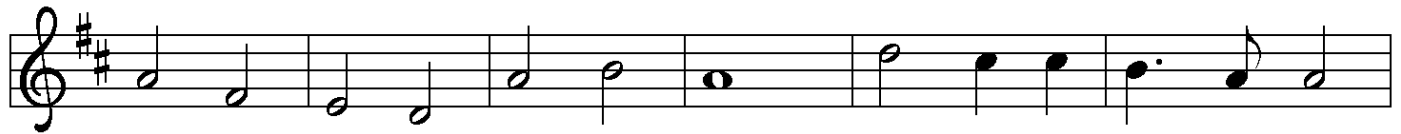
Lift up your hearts. We lift them to the Lord.

Let us give thanks to the Lord our God.

It is right to give our thanks and praise.

P: It is indeed right, our duty and our joy . . .
. . . praise your name and join their unending hymn:

Sanctus



Ho - ly, ho - ly, ho - ly Lord, Lord God of pow'r and might,



heav'n and earth are full of your glo - ry.



Ho - san - na in the high - est. Bless - ed is he who comes



in the name of the Lord. Ho - san - na in the high - est.

↑ Words of Institution

↑ The Lord's Prayer

P: Lord, remember us in your kingdom and teach us to pray:

C: **Our Father in heaven, hallowed be your name,
your kingdom come, your will be done,
on earth as in heaven.**

Give us today our daily bread.

Forgive us our sins

as we forgive those who sin against us.

Save us from the time of trial and deliver us from evil.

**For the kingdom, the power, and the glory are yours,
now and forever. Amen.**

↑ Invitation to the Table

P: The joy of the Lord is our strength.

Come, eat this meal of gladness.

Agnus Dei



Lamb of God, you take a-way the sin of the world; have mer-cy on



us. Lamb of God, you take a-way the sin of the world; have



mer-cy on us. Lamb of God, you take a-way the



sin of the world; grant us peace, grant us peace.

↑ Distribution Hymn

Shall We Gather at the River
ELW 423

↑ Post-Communion Prayer

P: Nourishing God,
at this table you have refreshed us
with holy gifts of food and drink.
Strengthen us for service,
and send us out to embody your good news
of liberation and healing for the sake of the world.
In the name of Christ we pray,

G: Amen.

Announcements

↑ **Benediction**

P: The God of love,
Father, † Son, and Holy Spirit,
lavish you with grace,
illumine your path,
and increase your joy,
today and always.

C: Amen.

↑ **Sending Hymn**

We Know That Christ Is Raised
ELW 449

↑ **Dismissal**

A: Go in peace.
Live in hope.

C: Thanks be to God!

Postlude

ANNOUNCEMENTS — JANUARY 12, 2025

WELCOME! Please fill out a CONNECT card if you are visiting us today, if you wish to receive our emails or newsletter, or if you want the pastor to contact you. PRAY cards may be used for prayer requests. Place cards in the offering plate.

WE WELCOME REV. CHELSEA GLOBE TODAY. Pastor Chelsea will be leading our 9 AM Forum as well as preaching at both services. She joined the Lutheran



Campus Ministry team at UW in Nov. 2020. A lifelong Washingtonian, she grew up in Enumclaw, graduated from Whitworth University in Spokane, and earned her Master of Divinity at Seattle

University's School of Theology and Ministry. She was ordained in the ELCA in 2014 and served in Federal Way before coming to campus ministry. She loves working with college students and supporting them during this intensely formative time of their lives.

Pastor Chelsea visits today to inform us about this important ministry and to encourage us to support young adults in our own context. To check out what campus ministry has been up to, or to support this ministry financially, visit www.uwlutherans.org.

FELLOWSHIP CONTINUES after 10:30 worship with coffee hour. Many thanks to Denny Alfson and Don Thomas for hosting today.

EVERY-MEMBER VISITS FOR WINTER: Please set aside 30-40 minutes to welcome Pastor Dan to your home to talk about your family, interests, and history at QALC, your feelings and dreams for this church, and anything else on your mind. God bless our work together with joy and understanding as we reconnect with one another. Thank you in advance for your hospitality. Sign up at the narthex railing. Times will vary each week.

THIS WEEK'S CALENDAR

Sunday, January 12

Worship	8:00 AM
Forum (<i>Conf. Rm./Zoom</i>)	9:00 AM
Worship	10:30 AM
Fine Arts Concert:	4:00 PM
"Winter Joy & Light" - Millar & Molloy	

Monday

PDQ Quilting (<i>downstairs</i>)	5:30 PM
ALZ Support Group (<i>FH</i>)	7:00 PM
Food Addicts in Recovery (<i>FH</i>)	7:00 PM

Tuesday

Church Council (<i>Conf. Rm/Zoom</i>)	7:00 PM
---	---------

Wednesday

Sewing & Service (<i>downstairs</i>)	10:00 AM
Staff Meeting (<i>library</i>)	12:30 PM
AA Counterbalance (<i>FH</i>)	7:30 PM

Thursday

Choir Rehearsal (<i>Music Rm</i>)	7:00 PM
-------------------------------------	---------

Saturday

Alanon (<i>upstairs</i>)	10:30 AM
AA Shanty Trudgers (<i>upstairs</i>)	7:00 PM

Sunday, January 19

Worship	8:00 AM
Worship	10:30 AM

QUEEN ANNE LUTHERAN CHURCH FINE ARTS PRESENTS

Winter Joy & Light

EMERSON MILLAR, violin

PAIGE ROBERTS MOLLOY, piano

JANUARY 12, 2025 • 4:00 PM

Freewill donations at the door to benefit QALC Fine Arts;
\$20 suggested—but pay as you can; all are welcome

Millar and Molloy return to lighten your hearts

with the music of Beethoven, Rachmaninoff,
Kreisler, Paganini and Moszkowski.

We hope you can join us for Winter Joy & Light!

Emerson Millar joined the Seattle Symphony in 2022
as the second assistant concertmaster.

Paige Roberts Molloy has given solo recitals around the world
and is a frequent guest of leading chamber music festivals across the United States.



Queen Anne
LUTHERAN CHURCH

2400 8TH AVE NW, SEATTLE, WA 98119

YOUR INPUT REQUESTED FOR FEBRUARY 2 LGBTQ + FORUM

Magdalena Phillips and her sister Svea are looking for input about what topics to cover in their February forum. The general theme is “LGBTQ+ topics,” but what specifically are you interested in? Let us know anonymously with the Google form linked in your Friday email, or with the physical form available in the narthex during all Sundays in January. We would love to hear from all of you!

Magdalena Phillips has been attending Queen Anne Lutheran Church ever since she was a small child. Since graduating from Duke University, she has become the Adult Education Coordinator and a member of Council. She has known that she was queer for more than a decade and is passionate about helping her fellow Lutherans better understand queer communities.

Svea Phillips is a recent graduate of Wesleyan University in Connecticut who grew up attending QALC. She transitioned in 2022 and has been active in LGBTQ communities in Connecticut and Seattle, including a student club for transgender folks, online meetup groups, and various in-personal events like last year's Pride Month.

“FIFTH FRIDAY” DINNER AT NEW HORIZONS COMING UP, 1/31

Our next date to provide a meal is Friday, January 31. Please contact Jim Margard if you are able to help; we will be needing a main course and side dishes, bread and dessert for 35 youth and young adult guests at this amazing youth ministry.

UPCOMING RIDWELL SPECIAL PICKUPS:

January 19: Bread tags.

February 2: Purses, handbags, belts, and wallets

February 14: Bras, new or gently-used

OFFICE HOURS THIS WEEK

Main Office: The office will be open (with some exceptions) on Wednesday and Thursday, 10–5:30. Best to call before you come by (206-284-1960). Barb is away in Minnesota through January 19. She is working remotely as she was this fall, and you can still email her at admin@queenannelutheran.org.

Pastor Dan Peterson is available Tuesday, Wednesday, Thursday, Saturday and Sunday. To contact him, e-mail pastor@queenannelutheran.org or leave a message on the church phone, 206-284-1960. For emergency pastoral communications only, text him at 253-230-9695.

Cantor Kyle is in the office Wednesday and Thursday afternoons and evenings. E-mail him at cantor@queenannelutheran.org.

Lynn Hofstad will be away this week, returning to the office on Wed. January 22. E-mail Lynn at programming@queenannelutheran.org.