

SECOND SUNDAY AFTER EPIPHANY

January 19, 2025

10:30 AM

↑ = *Stand* **C**: *Congregation* **A**: *Worship Assistant* **P**: *Presiding Minister*

Hymns may be found in the red hymnals in the pews. • Large-print hymns are available in the narthex as you enter. • Quiet Bags with books and soft toys, or Doodle Bags with markers are available in the narthex for children.

Prelude *O Morning Star, How Fair and Bright* (WIE SCHÖN LEUCHTET)
Johann Ludwig Krebs (1713–1780)

Introit **Psalm 66:4 ,1**

All the earth shall worship you, O God, and sing of you: they shall sing praises to your Name, O Most High. O be joyful in God, all you lands: sing praises unto the honor of God's Name; make God's praise to be glorious.

Welcome

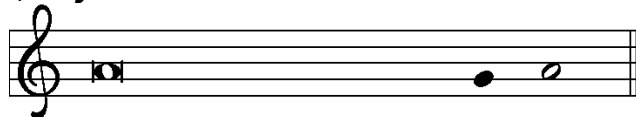
↑ **Gathering Hymn** *O Morning Star, How Fair and Bright*
Stanzas 1-3 ELW 308

↑ **Pastoral Greeting**

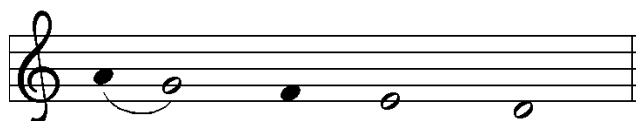
P: The grace of our Lord Jesus Christ, the love of God, and the communion of the Holy Spirit be with you all.

C: And also with you.

↑ **Kyrie**



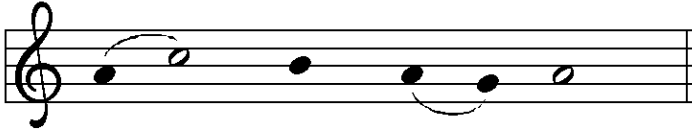
In peace, let us pray to the Lord.



Lord, have mer - cy.



For the peace from a-bove, and for our sal - vation, let us pray to the Lord.



Lord, have mer - cy.



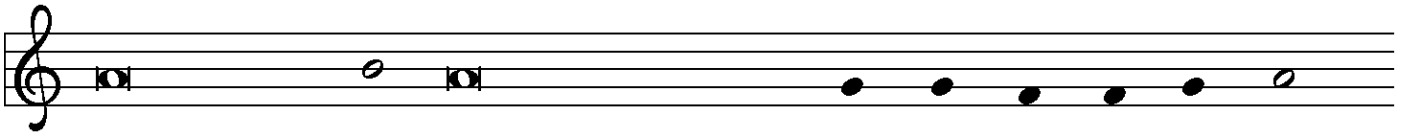
For the peace of the whole world, for the well-being of the church of God,



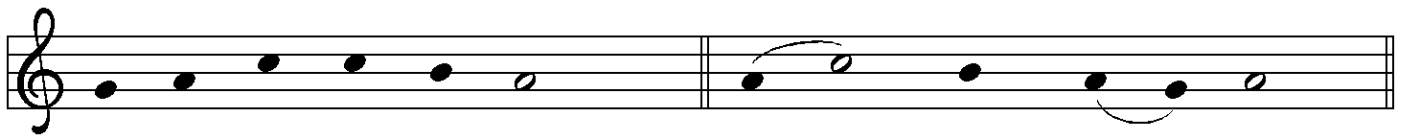
and for the unity of all, let us pray to the Lord.



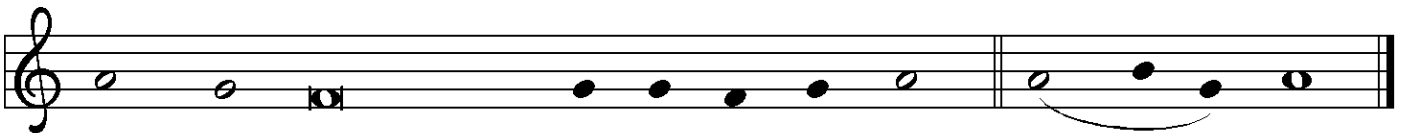
Lord, have mer - cy.



For this holy house, and for all who offer here their wor-ship and praise,

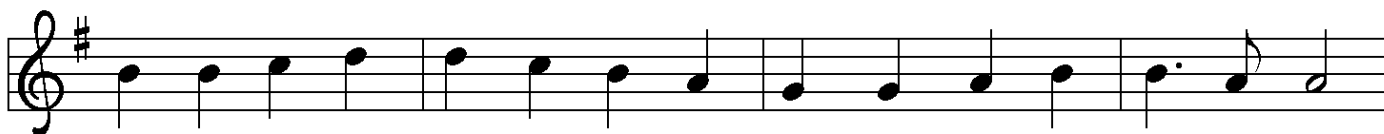


let us pray to the Lord. Lord have mer - cy.



Help, save, comfort, and de - fend us, gra-cious Lord. A - men.

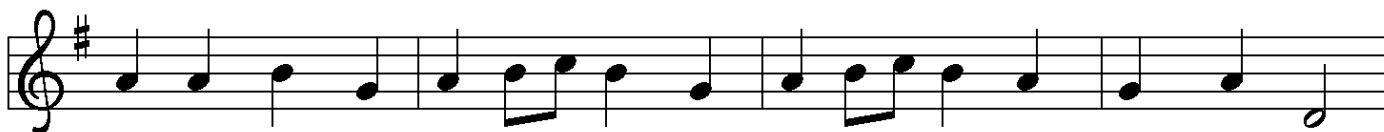
↑ Hymn of Praise



1 Glo-ry be to God in heav-en; peace, good-will to all the earth.
2 Glo-ry be to Christ for - ev - er, Lamb of God and Lord of love.
3 Ho - ly One we now ac-claim you; Lord a - lone, to you we call;



Might-y God of all cre - a - tion, Fa - ther of sur - pass - ing worth:
Son of God and gra-cious Sav - ior, you have come from heav'n a - bove;
Ho - ly One in faith we name you, God most high, yet near to all:



we ex - alt you, we a - dore you, we lift high our thanks and praise.
on the cross you died to save us; now you reign at God's right hand.
Je - sus Christ, with God the Spir - it, in the Fa - ther's splen - dor bright.



Saints and an - gels bow be - fore you; here on earth our songs we raise.
Hear our prayer; re - store, for - give us; in your prom - ise firm we stand.
For the peace that we in - her - it, glo - ry be to God on high!

↑ Prayer of the Day

P: Let us pray.

Lord God, source of every blessing,
you showed forth your glory and led many to faith
by the works of your Son,
who brought gladness and salvation to his people.
Transform us by the Spirit of his love,
that we may find our life together in him,
Jesus Christ, our Savior and Lord.

G: Amen.

First Reading

Isaiah 62:1-5

A: Word of God, Word of life.

C: Thanks be to God.

Psalmody

Psalm 36:5-10

To begin the psalm, the Choir sings the Refrain and all repeat. Thereafter, the Congregation sings the Refrain as indicated.

REFRAIN

We feast up - on the a - bun - dance of your house, O LORD.

Choir: regular verses; Congregation: boldface verses.

⁵Your love, O LORD, reaches | to the heavens,
and your faithfulness | to the clouds.

⁶**Your righteousness is like the strong mountains,
your justice like | the great deep;
you save humankind and ani- | mals, O LORD.**

REFRAIN

⁷How priceless is your | love, O God!
All people take refuge under the shadow | of your wings.

⁸**They feast upon the abundance | of your house;
you give them drink from the river of | your delights.**

⁹For with you is the | well of life,
and in your light | we see light.

¹⁰**Continue your lovingkindness to | those who know you,
and your favor to those who are | true of heart.**

REFRAIN

Second Reading

1 Corinthians 12:1-11

A: Word of God, Word of life.

C: Thanks be to God.

↑ **Gospel Acclamation**



Al - le - lu - ia. Lord, to whom shall we go?



You have the words of e - ter - nal life. Al - le - lu - ia.

↑ **The Holy Gospel**

John 2:1-11

P: The Gospel according to St. John.

C: Glory to you, O Lord.

After the reading

P: The Gospel of the Lord.

C: Praise to you, O Christ.

Sermon

Pastor Dan Peterson

↑ **Hymn of the Day**

Songs of Thankfulness and Praise

ELW 310

↑ Apostles' Creed

C: I believe in God, the Father almighty,
creator of heaven and earth.

I believe in Jesus Christ, God's only Son, our Lord,
who was conceived by the Holy Spirit,
born of the virgin Mary,
suffered under Pontius Pilate,
was crucified, died, and was buried;
he descended to the dead.

On the third day he rose again; he ascended into heaven,
he is seated at the right hand of the Father,
and he will come to judge
the living and the dead.

I believe in the Holy Spirit,
the holy catholic church,
the communion of saints,
the forgiveness of sins,
the resurrection of the body,
and the life everlasting.

Amen.



The Apostles' Creed emphasizes the full humanity of Christ (e.g., he was born, suffered, and died) in response to one of the earliest heresies, namely, the view that Christ only "appeared" to be human. Why? Detractors believed that the Spirit of God, which is good, could not dwell in a material or physical body, which is evil. When we profess the Apostles' Creed, following Jewish tradition, we insist otherwise. The world God made is good! With great joy and without contradiction, therefore, we can say with John 1:14 that "the Word became flesh and dwelled among us."

Prayers of the Church *(please be seated or kneel)*

A: . . . Lord, in your mercy.

C: Hear our prayer.

↑ Sharing of Peace

P: The peace of Christ be with you always.

C: And also with you.

Holy Communion – All baptized people who seek a taste of the new and forgiven life in Jesus Christ are welcome to receive the sacrament. We confess and believe that Christ, who fills all things, comes to us in a special way through the Sacrament of Bread and Wine and that by sharing in this meal, we share in Christ’s real presence among us.

The ministration of the Sacrament is given in two ways:

In the pew:

You may commune in the pews with individual elements. These are available in the narthex as you enter.

When invited to commune, peel off the bottom tab to eat the bread; peel off the top tab to drink the wine. The waste can go in the paper bag found in each pew.

By intinction:

When prompted by the ushers, come down the center aisle to kneel at the railing; please sanitize your hands.

Receive a wafer in your hands. Dip it in a chalice, either wine or grape juice, before partaking. Use the outside aisle to return to your seat.

↑ **The Great Thanksgiving**

The Lord be with you. And al - so with you.

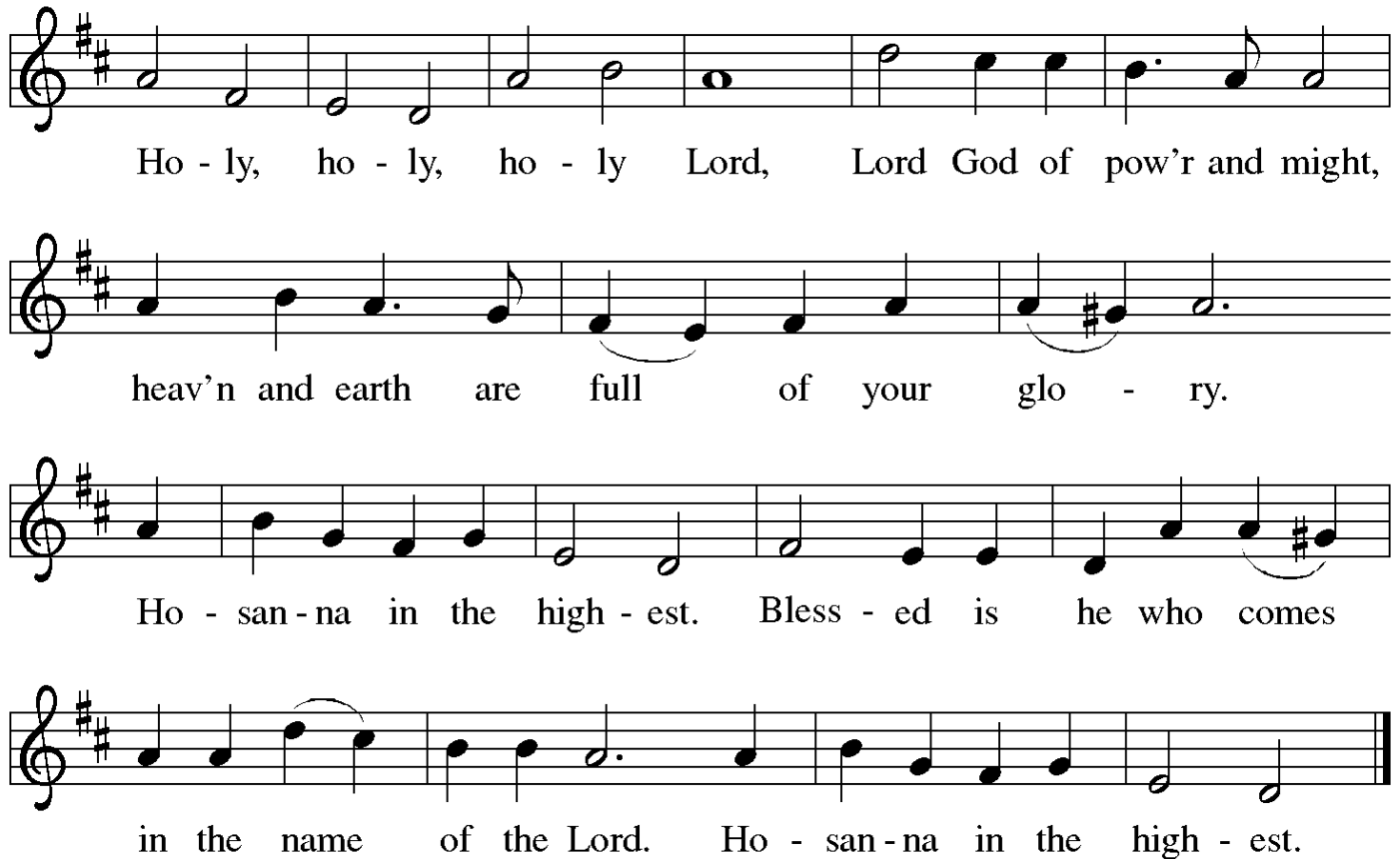
Lift up your hearts. We lift them to the Lord.

Let us give thanks to the Lord our God.

It is right to give our thanks and praise.

P: It is indeed right, our duty and our joy . . .
. . . praise your name and join their unending hymn:

Sanctus



Ho - ly, ho - ly, ho - ly Lord, Lord God of pow'r and might,
heav'n and earth are full of your glo - ry.
Ho - san - na in the high - est. Bless - ed is he who comes
in the name of the Lord. Ho - san - na in the high - est.

↑ Words of Institution

↑The Lord's Prayer

P: Lord, remember us in your kingdom and teach us to pray:

G: **Our Father in heaven, hallowed be your name,
your kingdom come, your will be done,
on earth as in heaven.**

Give us today our daily bread.

Forgive us our sins

as we forgive those who sin against us.

Save us from the time of trial and deliver us from evil.

**For the kingdom, the power, and the glory are yours,
now and forever. Amen.**

↑Invitation to the Table

P: The joy of the Lord is our strength.
Come, eat this meal of gladness.

Agnus Dei



Lamb of God, you take a-way the sin of the world; have mer-cy on



us. Lamb of God, you take a-way the sin of the world; have



mer-cy on us. Lamb of God, you take a-way the



sin of the world; grant us peace, grant us peace.

↑ Distribution Hymn

Let Us Break Bread Together
ELW 471

↑ Post-Communion Prayer

P: Nourishing God,
at this table you have refreshed us
with holy gifts of food and drink.
Strengthen us for service,
and send us out to embody your good news
of liberation and healing for the sake of the world.
In the name of Christ we pray,

G: Amen.

Announcements

↑ **Benediction**

P: The God of love,
Father, † Son, and Holy Spirit,
lavish you with grace,
illumine your path,
and increase your joy,
today and always.

C: **Amen.**

↑ **Sending Hymn**

Stanza 1, 4-6

O Morning Star, How Fair and Bright

ELW 308

↑ **Dismissal**

A: Go in peace.
Live in hope.

C: **Thanks be to God!**

Postlude

O Morning Star, How Fair and Bright (WIE SCHÖN LEUCHTET)
Otto Dienel (1839–1905)

About Today's Music

At the 10:30 service today, we split the hymn "O Morning Star, How Fair and Bright" (ELW 308) between the Gathering and Sending hymns – which we have done several times over the years at QALC at Epiphanytide. Known as the "Queen of Chorales," this is one of the most beloved Lutheran hymns and is well-known across many Christian denominations. Today's prelude and postlude selections are based upon the melody. The text and melody were both written by Philipp Nicolai (1556–1608), who received his doctorate in theology from the University of Wittenberg, where Luther had taught. Hymnologist Paul Westermeyer observes that "the hymn's images pull together God's love in Christ through word and sacraments in a joyful song that is at once cosmic and intensely personal...." He also notes, "If you center its lines – in German or English – and lay them out according to their rhyme scheme, the outline of a chalice emerges." The third stanza speaks of "Your word and Spirit, flesh and blood refresh our souls with heavenly food," and Lutheran sacramental theology figured prominently in Pastor Nicolai's ministry, so this shape may be intentional as a "figure poem" or "shaped verse." – *Cantor Kyle*

ANNOUNCEMENTS — JANUARY 19, 2025

WELCOME! Please fill out a CONNECT card if you are visiting us today, if you wish to receive our emails or newsletter, or if you want the pastor to contact you. PRAY cards may be used for prayer requests. Place cards in the offering plate.

FELLOWSHIP CONTINUES after 10:30 worship with coffee hour. Many thanks to Ingrid Wysong for hosting today.

EVERY-MEMBER VISITS FOR WINTER: Please set aside 30-40 minutes to welcome Pastor Dan to your home to talk about your family, interests, and history at QALC, your feelings and dreams for this church, and anything else on your mind. God bless our work together with joy and understanding as we reconnect with one another. Thank you in advance for your hospitality. Sign up at the narthex railing. Times will vary each week.

YOUR INPUT REQUESTED FOR FEBRUARY 2 LGBTQ + FORUM
Magdalena Phillips and her sister Svea are looking for input about what topics to cover in their February forum. The general theme is "LGBTQ+ topics," but what specifically are you interested in? Let us know anonymously with the Google form linked in your Friday email, or with the physical form available in the narthex during all Sundays in January. We would love to hear from all of you!

"FIFTH FRIDAY" DINNER AT NEW HORIZONS COMING UP SOON

Queen Anne Lutheran will again prepare dinners for about 35 unhoused youth at New Horizons Ministries on the fifth Fridays this year. Dinner dates are January 31st, May 30th, August 29th, and October 31st. **For the January meal**, we are in need of someone to offer dessert or a fresh fruit plate. Text or email Jim Margard at 206-920-7704 or jrm952@gmail.com if you would like to participate or have questions.

RIDWELL SPECIAL PICKUP TODAY, January 19: Bread tags.

UPCOMING: February 2: Purses, handbags, belts, and wallets

February 14: Bras, new or gently-used

THIS WEEK'S CALENDAR

Sunday, January 19

Worship 8:00 AM

Worship 10:30 AM

Monday

Food Addicts in Recovery (FH) 7:00 PM

Tuesday

QALCW Circle (Conf Rm/Zoom) 7:00 PM

Wednesday

Sewing & Service (downstairs) 10:00 AM

Staff Meeting (library) 12:30 PM

AA Counterbalance (FH) 7:30 PM

Thursday

Choir Rehearsal (Music Rm) 7:00 PM

Saturday

Alanon (upstairs) 10:30 AM

AA Shanty Trudgers (upstairs) 7:00 PM

Sunday, January 26

Worship 8:00 AM

Forum (Conf. Rm/Zoom) 9:00 AM

Worship 10:30 AM

Annual Meeting (FH/Zoom) 12:00 PM

SUNDAY, JANUARY 26 – ANNUAL MEETING

We will be holding our **Annual Congregational Meeting** next Sunday, January 26. It will be held in-person after our 10:30 worship. Attendance via Zoom will also be possible. Look for the Zoom link in your church email on Friday or next Sunday morning.

The purpose of the annual meeting of the congregation is

1. to review and celebrate the previous year's accomplishments;
2. to elect officers and delegates for the coming year*;
3. to hear and vote on next year's guidelines for expenditures and any other proposals requiring the majority approval of the membership.

Copies of the 2024 financials with the 2025 proposed budget, and the Nominations Committee Report, are available in print in the narthex, and online in the church website's "Members Area." (Contact the office if you need access.) The full Annual Report is available online in our Members Area.

A quorum of members is required to accomplish our tasks, and of course we hope you will be able to attend.

*Note that we have several openings which the Nominations Committee hopes will yet be filled. Please prayerfully consider if you could serve as a Synod delegate, or as a member of the following committees: Nominating, Endowment or Memorial Fund. Let Susan Evans or Tim Porter know if you're interested or have any questions.

ANNUAL-MEETING-DAY FORUM ON JANUARY 26

Q&A with the QALC Finance Committee

Come to the Conference Room from 9 to 10 AM. Bring your questions about our "Guidelines for Expenditures" for 2025, concerns about income and expenses, and other issues you'd like clarification on before heading to our Annual Meeting later that same day. (Attendance via Zoom is possible; look for the Zoom link in your church email.)

OFFICE HOURS THIS WEEK

Main Office: The office will be open this week Tuesday through Friday, 9-5:30. Email Barb Bash at the office at admin@queenannelutheran.org.

Pastor Dan Peterson is available Tuesday, Wednesday, Thursday, Saturday and Sunday. To contact him, e-mail pastor@queenannelutheran.org or leave a message on the church phone, 206-284-1960. For emergency pastoral communications only, text him at 253-230-9695.

Cantor Kyle is in the office Wednesday and Thursday afternoons and evenings. E-mail him at cantor@queenannelutheran.org.

Lynn Hofstad will be in the office on Wednesday and Thursday. E-mail Lynn at programming@queenannelutheran.org.

PROJECT PHOENIX INVITES
MIDDLE AND HIGH
SCHOOL STUDENTS TO:



Bowling NIGHT

FEB. 2, 2025

BRING
FRIENDS!

FREE

VAN LEAVES BALLARD FIRST
LUTHERAN AT 4:30 P.M.
(RETURN AT 7:30 P.M.)

BOWLING & DINNER!

RSVP

<https://shorturl.at/JmK4g>



QUEEN ANNE BOOK CLUB MEETS 1/27

The quarterly meeting for book club will be held Monday, January 27th at 5:00. We will gather in the church narthex. Bring your recently-read favorite book and an appetizer to share. Schedule for the rest of the year:

April 28

July 28

October 27

We look forward to seeing you!