

THIRD SUNDAY AFTER EPIPHANY

January 26, 2025

10:30 AM

↑ = *Stand* **C**: *Congregation* **A**: *Worship Assistant* **P**: *Presiding Minister*

Hymns may be found in the red hymnals in the pews. • Large-print hymns are available in the narthex as you enter. • Quiet Bags with books and soft toys, or Doodle Bags with markers are available in the narthex for children.

Prelude

Selections for organ from 18th-century England

Introit

Psalm 22:22, 27

I will declare your name to my people; in the midst of the assembly
I will praise you. All the ends of the earth shall remember, and turn
to the LORD; all the families of the nations shall bow before God.

Welcome

↑ Gathering Hymn

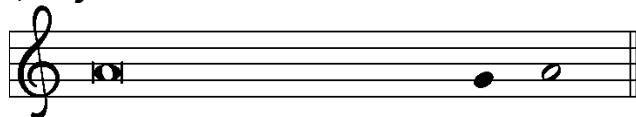
Arise, Your Light Has Come!
ELW 314

↑ Pastoral Greeting

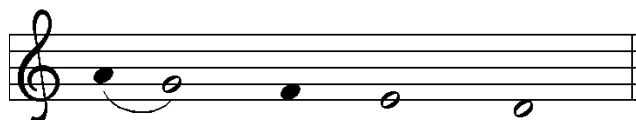
P: The grace of our Lord Jesus Christ, the love of God,
and the communion of the Holy Spirit be with you all.

C: And also with you.

↑ Kyrie



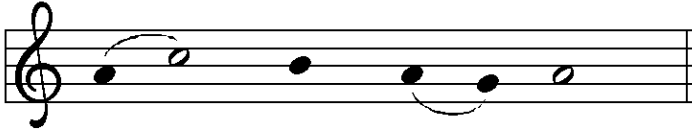
In peace, let us pray to the Lord.



Lord, have mer - cy.



For the peace from a-bove, and for our sal - vation, let us pray to the Lord.



Lord, have mer - cy.



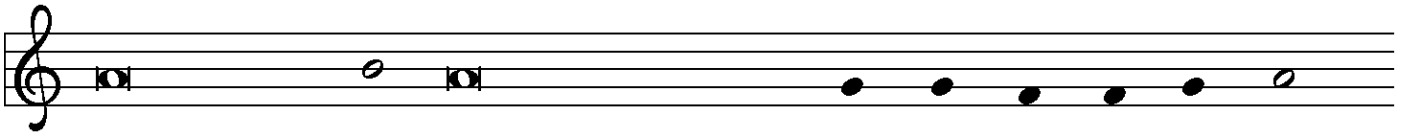
For the peace of the whole world, for the well-being of the church of God,



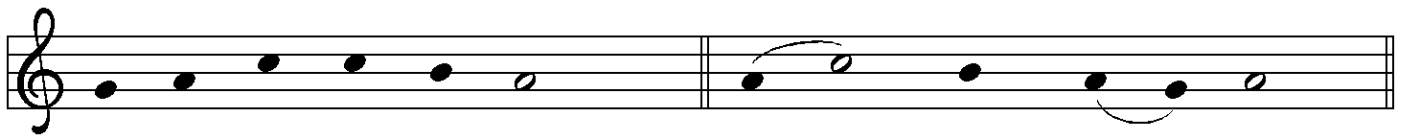
and for the unity of all, let us pray to the Lord.



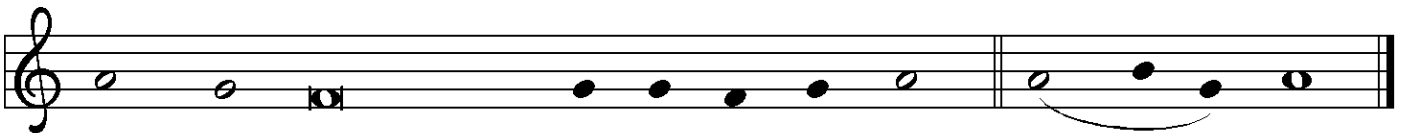
Lord, have mer - cy.



For this holy house, and for all who offer here their wor-ship and praise,

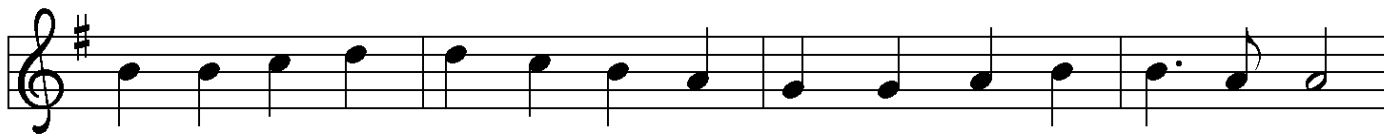


let us pray to the Lord. Lord have mer - cy.



Help, save, comfort, and de - fend us, gra-cious Lord. A - men.

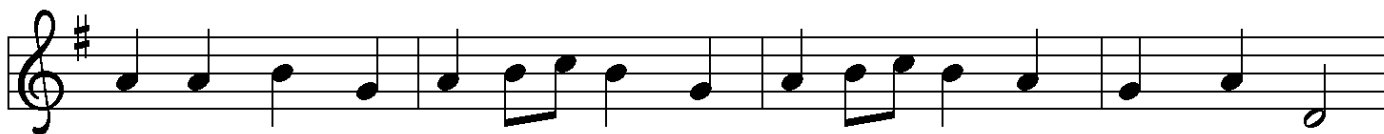
↑ Hymn of Praise



1 Glo-ry be to God in heav-en; peace, good-will to all the earth.
2 Glo-ry be to Christ for - ev - er, Lamb of God and Lord of love.
3 Ho - ly One we now ac-claim you; Lord a - lone, to you we call;



Might-y God of all cre - a - tion, Fa - ther of sur - pass - ing worth:
Son of God and gra - cious Sav - ior, you have come from heav'n a - bove;
Ho - ly One in faith we name you, God most high, yet near to all:



we ex - alt you, we a - dore you, we lift high our thanks and praise.
on the cross you died to save us; now you reign at God's right hand.
Je - sus Christ, with God the Spir - it, in the Fa - ther's splen - dor bright.



Saints and an - gels bow be - fore you; here on earth our songs we raise.
Hear our prayer; re - store, for - give us; in your prom - ise firm we stand.
For the peace that we in - her - it, glo - ry be to God on high!

↑ Prayer of the Day

P: Let us pray.

Blessed Lord God, you have inspired the holy scriptures
to be life-giving for your people.

Grant that we may hear, read, mark, and learn from them,
that, comforted by your promises, we may be strengthened
to work toward the fulfillment of your kingdom,
through your Son, Jesus Christ our Lord.

C: Amen.

First Reading

Nehemiah 8:1-3, 5-6, 8-10

A: Word of God, Word of life.


C: Thanks be to God.

Psalmody

Psalm 19

To begin the psalm, the Choir sings the Refrain and all repeat. Thereafter, the Congregation sings the Refrain as indicated.

REFRAIN



The teach-ing of the LORD re - vives the soul.

Choir: regular verses; Congregation: boldface verses.



- ¹ The heavens declare the glo- | ry of God,
and the sky proclaims its | maker's handiwork.
- ² **One day tells its tale | to another,**
and one night imparts knowledge | to another.
- ³ Although they have no | words or language,
and their voices | are not heard,
- ⁴ **their sound has gone out into all lands,**
and their message to the ends | of the world,
where God has pitched a tent | for the sun.
- ⁵ It comes forth like a bridegroom out | of his chamber;
it rejoices like a champion to | run its course.
- ⁶ **It goes forth from the uttermost edge of the heavens**
and runs about to the end of | it again;
nothing is hidden from its | burning heat.

REFRAIN

- 7 The teaching of the LORD is perfect and re- | vives the soul;
the testimony of the LORD is sure and gives wisdom | to the simple.
- 8 **The statutes of the LORD are just and re- | jice the heart;**
the commandment of the LORD is clear
and gives light | to the eyes.
- 9 The fear of the LORD is clean and en- | dures forever;
the judgments of the LORD are true and righteous | altogether.
- 10 **More to be desired are they than gold,**
more than | much fine gold,
sweeter far than honey, than honey | in the comb. REFRAIN
- 11 By them also is your ser- | vant enlightened,
and in keeping them there is | great reward.
- 12 **Who can detect one's | own offenses?**
Cleanse me from my | secret faults.
- 13 Above all, keep your servant from presumptuous sins;
let them not get dominion | over me;
then shall I be whole and sound, and innocent of a | great offense.
- 14 **Let the words of my mouth and the meditation of my heart**
be acceptable | in your sight,
O LORD, my strength and | my redeemer. REFRAIN

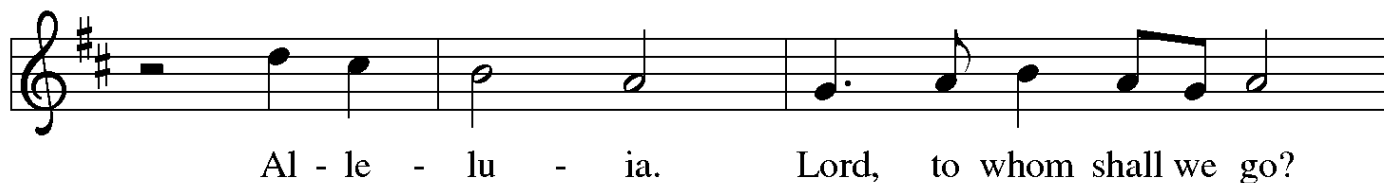
Second Reading

1 Corinthians 12:12-31a

A: Word of God, Word of life.

C: Thanks be to God.

↑ Gospel Acclamation



↑ The Holy Gospel

Luke 4:14-21

P: The Gospel according to St. Luke.

C: **Glory to you, O Lord.**

After the reading

P: The Gospel of the Lord.

C: **Praise to you, O Christ.**

Sermon

Pastor Dan Peterson

↑ Hymn of the Day

Christ, Be our Light

ELW 715

Prayers of the Church *(please be seated or kneel)*

A: . . . Lord, in your mercy.

C: **Hear our prayer.**

↑ Sharing of Peace

P: The peace of Christ be with you always.

C: **And also with you.**

Holy Communion— All baptized people who seek a taste of the new and forgiven life in Jesus Christ are welcome to receive the sacrament. We confess and believe that Christ, who fills all things, comes to us in a special way through the Sacrament of Bread and Wine and that by sharing in this meal, we share in Christ's real presence among us.

The ministration of the Sacrament is given in two ways:

In the pew:

You may commune in the pews with individual elements. These are available in the narthex as you enter.

When invited to commune, peel off the bottom tab to eat the bread; peel off the top tab to drink the wine. The waste can go in the paper bag found in each pew.

By intinction:

When prompted by the ushers, come down the center aisle to kneel at the railing; please sanitize your hands.

Receive a wafer in your hands. Dip it in a chalice, either wine or grape juice, before partaking. Use the outside aisle to return to your seat.

↑ The Great Thanksgiving

The Lord be with you. And al - so with you.
Lift up your hearts. We lift them to the Lord.
Let us give thanks to the Lord our God.
It is right to give our thanks and praise.

The image shows four staves of musical notation in G major (one sharp) and 4/4 time. Each staff contains a melody line with lyrics underneath. The lyrics are: 'The Lord be with you. And al - so with you.', 'Lift up your hearts. We lift them to the Lord.', 'Let us give thanks to the Lord our God.', and 'It is right to give our thanks and praise.' The music consists of quarter and eighth notes, often beamed together, with some phrases ending in a fermata.

P: It is indeed right, our duty and our joy . . .
. . . praise your name and join their unending hymn:

Sanctus

Ho - ly, ho - ly, ho - ly Lord, Lord God of pow'r and might,
heav'n and earth are full of your glo - ry.
Ho - san - na in the high - est. Bless - ed is he who comes
in the name of the Lord. Ho - san - na in the high - est.

The image shows four staves of musical notation in G major (one sharp) and 4/4 time. Each staff contains a melody line with lyrics underneath. The lyrics are: 'Ho - ly, ho - ly, ho - ly Lord, Lord God of pow'r and might,', 'heav'n and earth are full of your glo - ry.', 'Ho - san - na in the high - est. Bless - ed is he who comes', and 'in the name of the Lord. Ho - san - na in the high - est.' The music features a mix of quarter, eighth, and sixteenth notes, with some phrases ending in a fermata.

↑ Words of Institution

↑ The Lord's Prayer

P: Lord, remember us in your kingdom and teach us to pray:

C: **Our Father in heaven, hallowed be your name,
your kingdom come, your will be done,
on earth as in heaven.
Give us today our daily bread.
Forgive us our sins
as we forgive those who sin against us.
Save us from the time of trial and deliver us from evil.
For the kingdom, the power, and the glory are yours,
now and forever. Amen.**

↑ Invitation to the Table

P: The joy of the Lord is our strength.
Come, eat this meal of gladness.

Agnus Dei



Lamb of God, you take a-way the sin of the world; have mer-cy on



us. Lamb of God, you take a-way the sin of the world; have



mer-cy on us. Lamb of God, you take a-way the



sin of the world; grant us peace, grant us peace.

↑ Distribution Anthem

Christ the Center
Andrew Bruhn (b. 1985)

↑ **Post-Communion Prayer**

P: Nourishing God,
at this table you have refreshed us
with holy gifts of food and drink.
Strengthen us for service,
and send us out to embody your good news
of liberation and healing for the sake of the world.
In the name of Christ we pray,

C: **Amen.**

Announcements

↑ **Benediction**

P: The God of love,
Father, † Son, and Holy Spirit,
lavish you with grace,
illumine your path,
and increase your joy,
today and always.

C: **Amen.**

↑ **Sending Hymn**

The Spirit Sends Us Forth to Serve
ELW 551

↑ **Annual Congregational Meeting Opening Liturgy**

P: Confident in God's generosity and gathered into one by the Holy Spirit,
let us pray.

God, we praise you and give you thanks.

C: **You are good, and your mercy endures forever.**

P: You gave us a garden with good food to eat.

C: **We praise you for food that nourishes us.**

P: You rescued your people from slavery.

C: **We praise you for freedom.**

P: You gave us prophets to correct, rebuke and encourage us.

C: **We bless you for your justice and mercy.**

P: You gave us your Son, Jesus, to love, redeem and save us.

C: **We praise you for his death and resurrection.**

P: You gave us your Holy Spirit to be our Advocate and Comforter.

C: **We bless you for the gifts of every tribe and nation.**

P: Strengthen your church with every spiritual gift

C: **and commission us again to be your servant people.**

P: Multiply in us the fruit of the spirit:

C: **love, joy, peace, patience, kindness, generosity, faithfulness, gentleness and self-control.**

P: Send us in your love and mercy,

C: **that the world may know you and praise you.**

P: Let us pray.

Gracious God, you are the giver of every good gift.

Bless us with all that we need for ministry in your name,

that we might be a blessing to others, and bless the food we are about to receive as we begin our annual meeting.

In the name of the one who broke bread and fed the multitudes, Jesus Christ, our Lord.

C: **Amen.**

↑ **Dismissal**

A: Go in peace. Live in hope.

C: **Thanks be to God!**

Postlude

Toccata on FESTAL SONG (ELW 314)

Gilbert M. Martin (b. 1941)

About Today's Music

Today's postlude is based on the first hymn at the 10:30 service, "Arise, Your Light Has Come!" (ELW 314). The festive piece is by Gilbert Martin, a prolific composer of choral music as well as organ, piano, musical theater, and ballet music with more than 300 published works. A native of Southbridge, MA, he is a graduate of Westminster Choir College in Princeton, NJ and lives in Dayton, OH. Musicals he has penned include the whimsically titled *Pardon Me, Is This Planet Taken? A Musical Space Trip*.

— Cantor Kyle

ANNOUNCEMENTS — JANUARY 26, 2025

WELCOME! Please fill out a CONNECT card if you are visiting us today, if you wish to receive our emails or newsletter, or if you want the pastor to contact you. PRAY cards may be used for prayer requests. Place cards in the offering plate.

TODAY'S FORUM: Q&A with the QALC Finance Committee

Come to the Conference Room from 9 to 10 AM. Bring your questions about our "Guidelines for Expenditures" for 2025, concerns about income and expenses, and other issues you'd like clarification on before heading to our Annual Meeting today.

FLOWERS FOR THE ALTAR today are given by Judy Young to the glory of God and in loving memory of Stephen Young.

TODAY IS OUR ANNUAL CONGREGATIONAL MEETING, which will be held in-person after our 10:30 worship. Attendance via Zoom will also be possible. Look for the Zoom link in your church emails.

The purpose of the annual meeting of the congregation is

1. to review and celebrate the previous year's accomplishments;
2. to elect officers and delegates for the coming year*;
3. to hear and vote on next year's guidelines for expenditures and any other proposals requiring the majority approval of the membership.

Copies of the Annual Report as well as a separate document with the 2024 financials and the 2025 proposed budget are available in the narthex.

A quorum of members is required to accomplish our tasks, so we hope you will be able to attend.

*Note that we have several openings which the Nominations Committee hopes will yet be filled. Please prayerfully consider if you could serve as a Synod delegate, or as a member of the following committees: Nominating, Endowment or Memorial Fund. Let Susan Evans or Tim Porter know if you're interested or have any questions.

SPECIAL THANKS TO OUR CHURCH COUNCIL for providing lunch today. Thanks, also, to **Dylan Holland** and **Brent McCullough** for setting up the technology.

For members attending today, please note your presence on the check-in list on the small Fellowship Hall table. If you are a member but your name is missing from that check-in list, it may be that we do not have a record of contribution from the past two years. If so, please drop an offering in the basket there; (\$1.00 is sufficient!) using the envelopes provided, and add your name to the list of attendees.

**QUEEN ANNE BOOK CLUB
MEETS TOMORROW**

The quarterly meeting for book club will be held Monday, January 27th at 5:00. We will gather in the church narthex. Bring your recently-read favorite book and an appetizer to share. We look forward to seeing you!

Schedule for the rest of the year: April 28. • July 28. • October 27

**“FIFTH FRIDAY” DINNER
AT NEW HORIZONS THIS WEEK**

Queen Anne Lutheran will again prepare dinners for about 35 unhoused youth at New Horizons Ministries on the fifth Fridays this year. Dinner dates are January 31st, May 30th, August 29th, and October 31st. **For the January meal**, we are in need of someone to offer dessert or a fresh fruit plate. Text or email Jim Margard at 206-920-7704 or jrm952@gmail.com if you would like to participate or have questions.

**YOUR INPUT REQUESTED FOR
FEBRUARY 2 LGBTQ + FORUM**

Magdalena Phillips and her sister Svea are looking for input about what topics to cover in their February forum. The general theme is “LGBTQ+ topics,” but what specifically are you interested in? Let us know anonymously with the Google form linked in your Friday email, or with the physical form available in the narthex during all Sundays in January. We would love to hear from all of you!

THIS WEEK’S CALENDAR

Sunday, January 26

Worship	8:00 AM
Forum (<i>Conf. Rm/Zoom</i>)	9:00 AM
Worship	10:30 AM
Annual Meeting (<i>FH/Zoom</i>)	12:00 PM

Monday

Food Addicts in Recovery (<i>FH</i>)	7:00 PM
--	---------

Tuesday (office closed)

Wednesday

Sewing & Service (<i>downstairs</i>)	10:00 AM
Staff Meeting (<i>library</i>)	12:30 PM
AA Counterbalance (<i>FH</i>)	7:30 PM

Thursday

Choir Rehearsal (<i>Music Rm</i>)	7:00 PM
-------------------------------------	---------

Saturday

Seattle Seekers (<i>Conf Rm</i>)	10:00 AM
Alanon (<i>upstairs</i>)	10:30 AM
AA Shanty Trudgers (<i>upstairs</i>)	7:00 PM

Sunday, February 2

Worship	8:00 AM
Forum (<i>Conf. Rm/Zoom</i>)	9:00 AM
Worship	10:30 AM

SATURDAY, FEBRUARY 2 @ 10:00 AM: SEATTLE SEEKERS

Eager to explore life’s big questions? Searching for a sense of belonging? Join us monthly for meaningful discussion and connection over a light breakfast as we delve into life’s big questions and the quest for meaning. We draw from both secular perspectives and Christian teachings to cultivate a holistic understanding of ethics, spirituality, and purpose. Whether believer, skeptic, or in-between: you are welcome.

PROJECT PHOENIX INVITES
MIDDLE AND HIGH
SCHOOL STUDENTS TO:

Bowling NIGHT

FEB. 2, 2025

BRING
FRIENDS!

FREE

VAN LEAVES BALLARD FIRST
LUTHERAN AT 4:30 P.M.
(RETURN AT 7:30 P.M.)

BOWLING & DINNER!

RSVP

<https://shorturl.at/JmK4g>



EVERY-MEMBER VISITS FOR WINTER: Please set aside 30-40 minutes to welcome Pastor Dan to your home, or to meet at church or have coffee, to talk about your family, interests, and history at QALC, your feelings and dreams for this church, and anything else on your mind. God bless our work together with joy and understanding as we reconnect with one another. Sign up at the narthex railing. Days and times will vary each week.

AUDIO-RECORDING WORSHIP – WE NEED HELPERS!

Connie Wurm is having a surgery and will be unable to record our 10:30 worship for a month of Sundays, February 2 through March 2. Although we have a few members who can fill in, we would like to train one or two more people to do this. Please talk to Rich Mathes or Connie if you would like to learn how. It is not complicated.

UPCOMING RIDWELL SPECIAL PICKUPS:

February 2: Purses, handbags, belts, and wallets

February 14: Bras, new or gently-used

RECYCLE YOUR TECH!

If you're looking to donate old electronics or small appliances, the Ballard Library (5614 22nd Ave NW) is accepting drop-offs of used tech devices and small appliances through February for redistribution in Seattle. You can drop off items anytime the library is open until Feb. 28.

InterConnection, a local nonprofit, says donated items will be refurbished and provided to community members in need. InterConnection, a certified Microsoft refurbisher, says items do not need to be in working condition and there's no charge to drop them off. InterConnection will completely wipe all existing data off the devices.

Along with laptops, phones, and tablets, the group also accepts small appliances such as blenders, toasters and microwaves. Go to interconnection.org/accepted-items/ for the full list of what they'll take.

"Help us bridge the digital divide by getting rid of your unused devices and making them available to low-income communities," InterConnection said.

OFFICE HOURS THIS WEEK

Main Office: Barb Bash is taking Tuesday off. The office will be open this week Wednesday through Friday, 9-5:30. Email Barb at admin@queenannelutheran.org.

Pastor Dan Peterson is available Tuesday, Wednesday, Thursday, Saturday and Sunday. To contact him, e-mail pastor@queenannelutheran.org or leave a message on the church phone, 206-284-1960. For emergency pastoral communications only, text him at 253-230-9695.

Cantor Kyle is in the office Wednesday and Thursday afternoons and evenings. E-mail him at cantor@queenannelutheran.org.

Lynn Hofstad will be in the office on Wednesday and Thursday. E-mail Lynn at programming@queenannelutheran.org.