

## SECOND SUNDAY OF EASTER

April 27, 2025

10:30 AM

↑ = Stand   **C**: Congregation   **A**: Worship Assistant   **P**: Presiding Minister

Hymns may be found in the red hymnals in the pews. • Large-print hymns are available in the narthex as you enter. • Quiet Bags with books and soft toys, or Doodle Bags with markers are available in the narthex for children.

### Prelude

### Welcome

↑ Gathering Hymn

*Good Christian Friends, Rejoice and Sing!*  
ELW 385

↑ Greeting

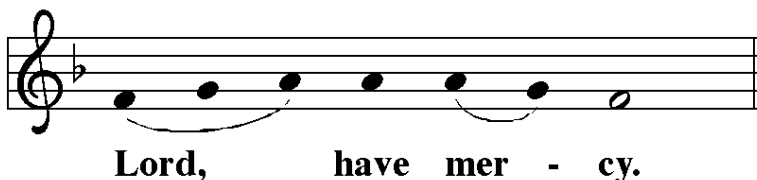
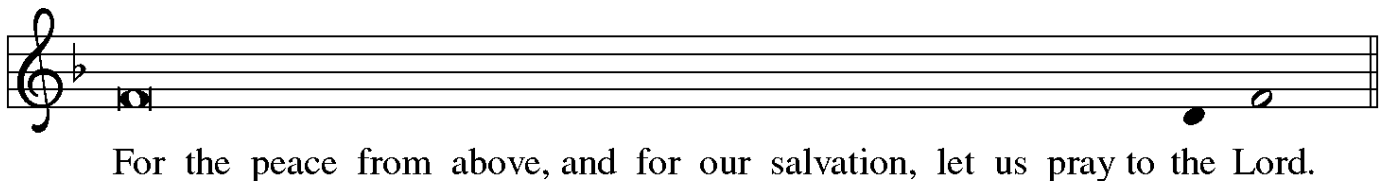
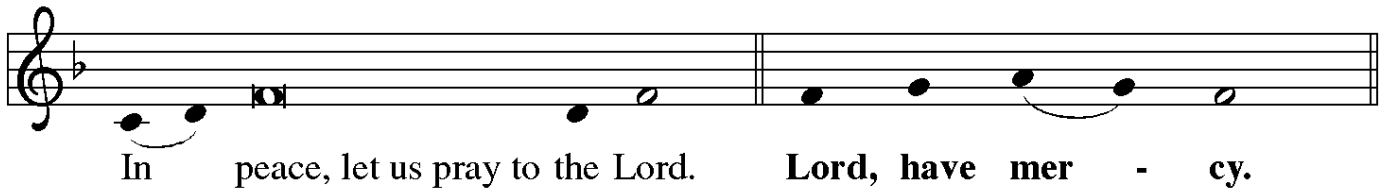
**P**: Alleluia! Christ is risen.

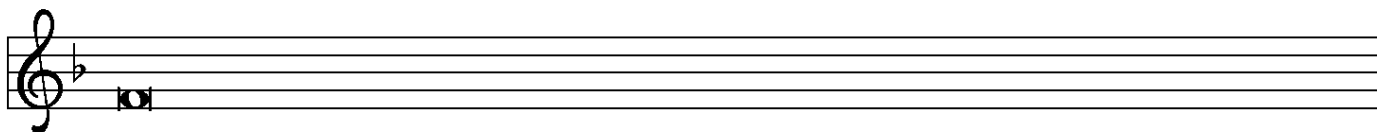
**C**: Christ is risen indeed. Alleluia!

**P**: The grace of our Lord Jesus Christ, the love of God,  
and the communion of the Holy Spirit be with you all.

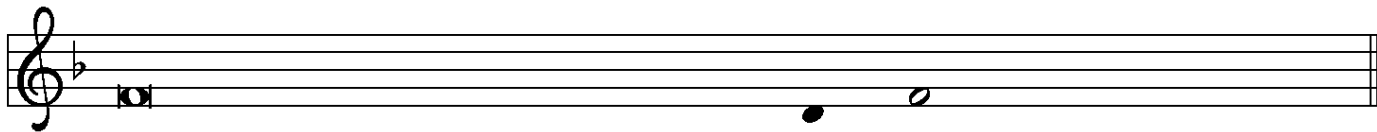
**C**: And also with you.

↑ Kyrie





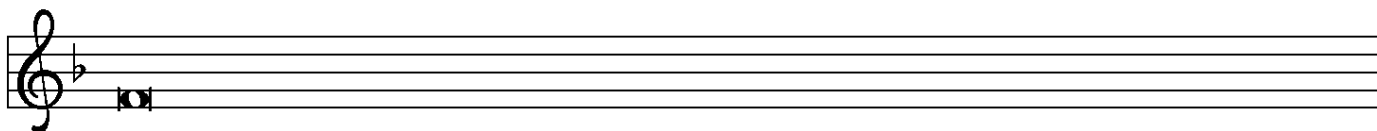
For the peace of the whole world, for the well-being of the church of God,



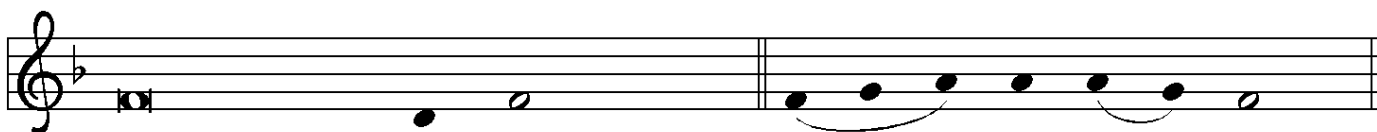
and for the unity of all, let us pray to the Lord.



Lord, have mer - cy.

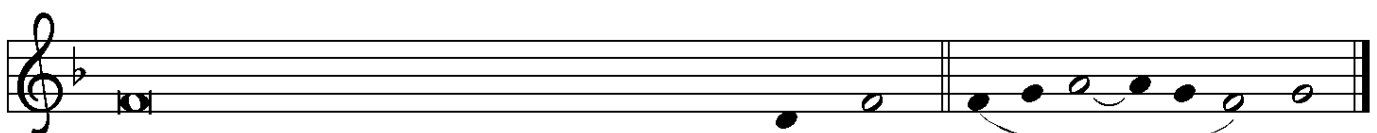


For this holy house, and for all who offer here their worship and praise,



let us pray to the Lord.

Lord, have mer - cy.



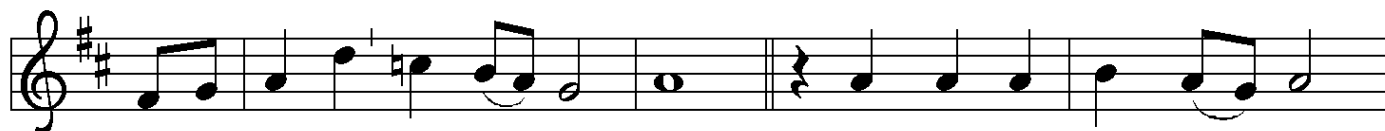
Help, save, comfort, and defend us, gra - cious Lord. A - men.

## ↑Hymn of Praise

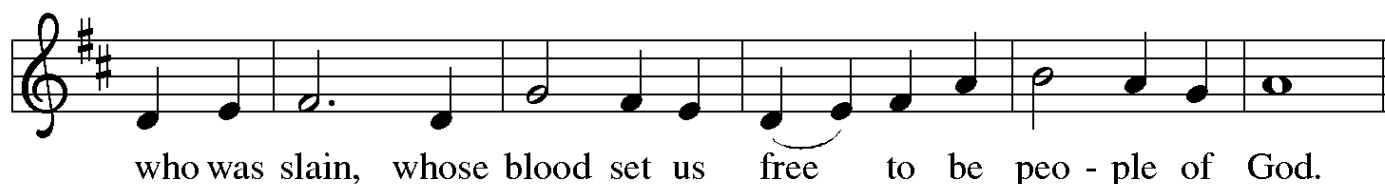
*Refrain*



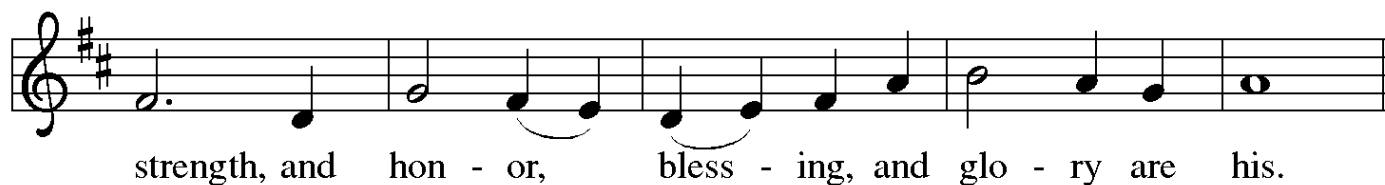
This is the feast of vic-to-ry for our God. Al-le - lu - ia,



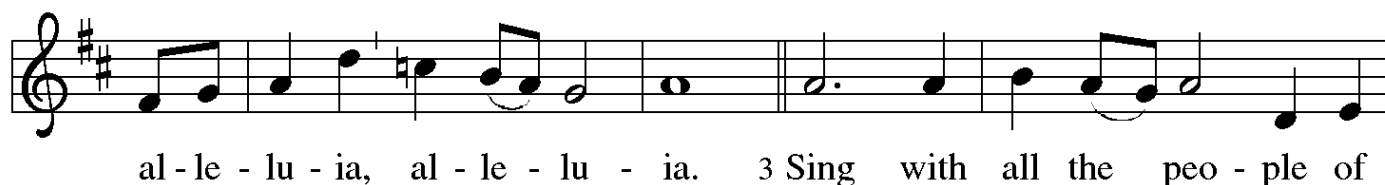
al - le - lu - ia, al - le - lu - ia. 1 Wor - thy is Christ, the Lamb



*Refrain*



*Refrain*



*Refrain*

This is the feast of vic-to-ry for our God. Al-le - lu - ia,

al - le - lu - ia, al - le - lu - ia. 4 For the Lamb who was

slain has be - gun his reign. Al - le - lu - ia.

*Final refrain*

This is the feast of vic - to-ry for our God.

Al-le - lu - ia, al - le - lu - ia, al - le - lu - ia.

### ↑Prayer of the Day

**P:** The Lord be with you.

**C:** And also with you.

**P:** O God of life, you reach out to us amid our fears  
with the wounded hands of your risen Son.

By your Spirit's breath revive our faith in your mercy,  
and strengthen us to be the body of your Son,  
Jesus Christ, our Savior and Lord,  
who lives and reigns with you and the Holy Spirit,  
one God, now and forever.

**C:** Amen.



## Anthem

Ethan Ibsen, soprano

*"I Know That My Redeemer Liveth"* (from *Messiah*)

George Frideric Handel (1685–1759)

## First Reading

Acts 5:27-32

**A:** Word of God, Word of life.

**G:** Thanks be to God.

## Psalmody

Psalm 118:14-29

*The psalm is spoken responsively by whole verse as given below.*

*The congregation responds to the leader with the verses in boldface type.*

<sup>14</sup> The Lord is my strength and my song,  
and has become my salvation.

<sup>15</sup> **Shouts of rejoicing and salvation echo in the tents of the righteous:  
"The right hand of the Lord acts valiantly!"**

<sup>16</sup> The right hand of the Lord is exalted!  
The right hand of the Lord acts valiantly!"

<sup>17</sup> **I shall not die, but live,  
and declare the works of the Lord.**

<sup>18</sup> The Lord indeed punished me sorely,  
but did not hand me over to death.

<sup>19</sup> **Open for me the gates of righteousness;  
I will enter them and give thanks to the Lord.**

<sup>20</sup> "This is the gate of the Lord;  
here the righteous may enter."

<sup>21</sup> **I give thanks to you, for you have answered me  
and you have become my salvation.**

<sup>22</sup> The stone that the builders rejected  
has become the chief cornerstone.

<sup>23</sup> **By the Lord has this been done;  
it is marvelous in our eyes.**

<sup>24</sup> This is the day that the Lord has made;  
let us rejoice and be glad in it.

<sup>25</sup> **Hosanna! O Lord, save us!**  
**We pray to you, Lord, prosper our days!**

<sup>26</sup> Blessed is the one who comes in the name of the Lord;  
we bless you from the house of the Lord.

<sup>27</sup> **The Lord is God and has given us light.**  
**Form a procession with branches up to the corners of the altar.**

<sup>28</sup> You are my God, and I will thank you;  
you are my God, and I will exalt you.

<sup>29</sup> **Give thanks to the Lord, for the Lord is good;**  
**God's mercy endures forever.**

## Second Reading

Revelation 1:4-8

**A:** Word of God, Word of life.

**G:** Thanks be to God.

## ↑ Gospel Acclamation

Al - le - lu - ia. Lord, to whom shall we go? You have the  
words of e - ter - nal life. Al - le - lu - ia. Al - le - lu - ia.

## ↑ The Holy Gospel

John 20:19-31

**P:** The Gospel according to St. John, the twentieth chapter.

**G:** **Glory to you, O Lord.**

*After the reading*

**P:** The Gospel of the Lord.

**G:** **Praise to you, O Christ.**

*Silence is kept for reflection.*

↑ **Hymn of the Day**  
*Stanzas 1, 5–8*

*O Sons and Daughters, Let Us Sing*  
**ELW 386**

↑ **Apostles' Creed**

☒: **I believe in God, the Father almighty,  
creator of heaven and earth.**

**I believe in Jesus Christ, God's only Son, our Lord,  
who was conceived by the Holy Spirit,  
born of the virgin Mary,  
suffered under Pontius Pilate,  
was crucified, died, and was buried;  
he descended to the dead.**

**On the third day he rose again;  
he ascended into heaven,  
he is seated at the right hand of the Father,  
and he will come to judge the living and the dead.**

**I believe in the Holy Spirit,  
the holy catholic church,  
the communion of saints,  
the forgiveness of sins,  
the resurrection of the body,  
and the life everlasting.  
Amen.**



**The Apostles' Creed** emphasizes the full humanity of Christ (e.g., he was born, suffered, and died) in response to one of the earliest heresies, namely, the view that Christ only “appeared” to be human. Why? Detractors believed that the Spirit of God, which is good, could not dwell in a material or physical body, which is evil. When we profess the Apostles' Creed, following Jewish tradition, we insist otherwise. The world God made is good! With great joy and without contradiction, therefore, we can say with John 1:14 that “the Word became flesh and dwelled among us.”

## Blessing of the Quilts and Kits



**P:** God, our neighbors around the world are in need of hope. Your Spirit intercedes on their behalf, your whispers of hope bring them reassurance. Open our hearts and hands to feel your presence around us, in our neighborhoods and with others across the world.

**C:** **Jesus, help us speak words of hope to our neighbors.**

**P:** God, we give you thanks for the pieces of fabric, thread, the sewing machines, and the items collected for the school kits, personal care kits, baby care kits and fabric kits. May their presence be a sign of hope; may these quilts wrap our neighbors in unending love; and may these kits give strength to those who struggle against hardship.

**C:** **Jesus, help us reach out in hope to our neighbors.**

**P:** God, we give thanks for all the hands that fashioned hope into a quilt, for the hands that collected and sorted, for the hands that continually open wider so that no one feels left out. Bless our quilting ministry at Queen Anne Lutheran and all who share in it.

**C:** **Jesus, help us see hope in our neighbors.**

**P:** God, we ask you to guide the staff and partners at LWR. May their voices and hands be a beacon of hope. Keep them safe. Keep them filled with your strength and perseverance. Be with those who pack and deliver these kits.

**C:** **Jesus, help us share a taste of hope with our neighbors.**

**P:** God, be with our neighbors who will receive these gifts. Whether or not we know their names or where they live, they are our neighbors, made in your image as we are, children of one humanity. We pray all this in the name of Jesus, God's loudest whisper of hope and healing to the world.

**C:** **Amen.**

**P:** Recognizing God's abundant hope, let us be a sign of hope to our neighbors near and far: offering hands to hold, and compassion from our hearts. In the name of the Father, ✠ the Son, and the Holy Spirit.

**C:** Amen.

### **Prayers of the Church** *(please be seated or kneel)*

**A:** . . . Lord, in your mercy.

**C:** Hear our prayer.

### **↑ Sharing of Peace**

**P:** The peace of Christ be with you always.

**C:** And also with you.

### **Holy Communion —**

All who seek a taste of the new and forgiven life in Jesus Christ are welcome to receive the sacrament. We confess and believe that Christ, who fills all things, come to us in a special way through the Sacrament of Bread and Wine, and that by sharing in this meal, we share in Christ's real presence among us.

The ministration of the Sacrament is given in two ways:

#### **In the pew:**

You may commune in the pews with individual elements. These are available in the narthex as you enter.

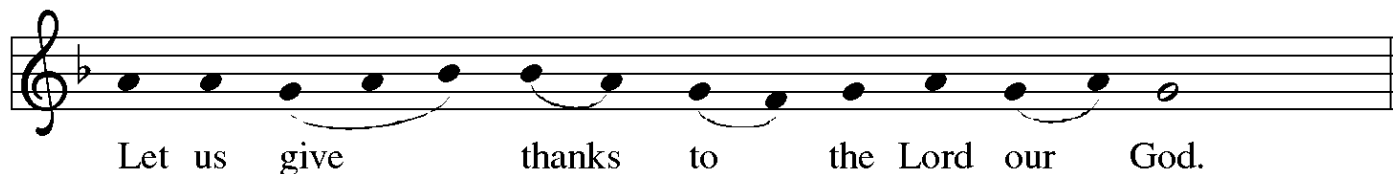
When invited to commune, peel off the bottom tab to eat the bread; peel off the top tab to drink the wine. Place the waste in the paper bag in your pew.

#### **By intinction:**

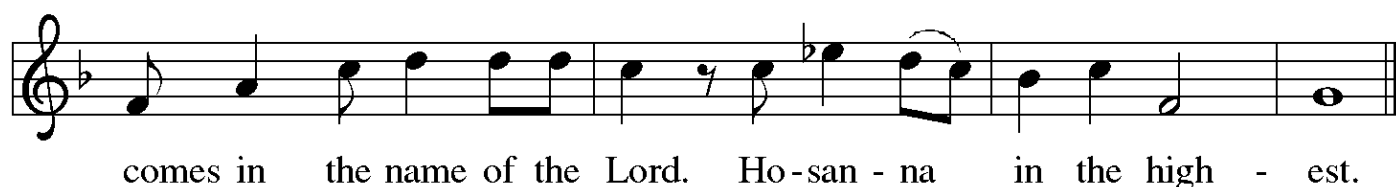
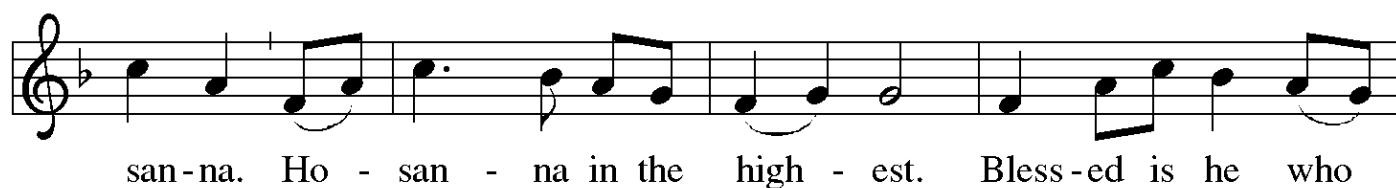
When prompted by the ushers, come down the center aisle to kneel at the railing; please sanitize your hands.

Receive a wafer in your hands. Dip it in a chalice, either wine or grape juice, before partaking. Use the outside aisle to return to your seat.

## ↑ The Great Thanksgiving



**P:** It is indeed right, our duty and our joy . . .  
... praise your name and join their unending hymn:



## ↑ Words of Institution

## ↑ Lord's Prayer

**P:** Lord, empower us to work toward your kingdom and teach us to pray:

**G:** Our Father in heaven, hallowed be your name,  
your kingdom come, your will be done,  
on earth as in heaven.  
Give us today our daily bread.  
Forgive us our sins  
as we forgive those who sin against us.  
Save us from the time of trial  
and deliver us from evil.  
For the kingdom, the power, and the glory are yours,  
now and forever. Amen.

## ↑ Invitation to the Table

**P:** The Risen Christ is among us. We are his body.  
Alleluia! Receive the bread of life.

## Agnus Dei

Lamb of God, you take a - way the sin of the world; have  
mer-cy on us. Lamb of God, you take a - way the sin of the  
world; have mer - cy on us. Lamb of God, you take a - way the  
sin of the world; grant us peace.

## Hymn at the Distribution

*We Walk by Faith*  
ELW 635

### ↑ Post Communion Prayer

**P:** Living God,  
you have greeted us in our brokenness  
and fed us with your body, broken for us.  
Having been raised to new life in you,  
send us now to be Christ to a wounded world,  
in the name of our risen Savior and Lord.

**C:** Amen.

## Announcements

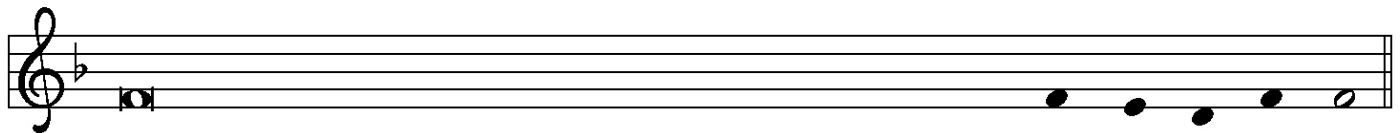
### ↑ Benediction



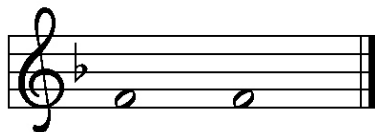
Let us bless the Lord.



Thanks be to God.



Eternal God, the Father, + the Son, and the Holy Spirit, bless and pre-serve you.



A - men.

### ↑ Sending Hymn

*The Day of Resurrection*  
ELW 361

### ↑ Dismissal

**A:** Go in peace. Be Christ to your neighbor.

**C:** Thanks be to God.

## Postlude



## ANNOUNCEMENTS — APRIL 27, 2025

**WELCOME!** Please fill out a CONNECT card if you are visiting us today, if you wish to receive our emails or newsletter, or if you want the pastor to contact you. PRAY cards may be used for prayer requests. Place cards in the offering plate.

### **BLESSING OF THE QUILTS & KITS!**

Enjoy the beautiful sanctuary today as we bless the quilts and kits created by our Lutheran World Relief volunteers in preparation for the LWR Ingathering May 2 & 3. Stay after church to help weigh and pack the quilts if you are able.

We are grateful to **ETHAN IBSEN**, this morning's soloist. He sings with the NW Boychoir. He recently sang in *The Snowman* with the Seattle Symphony Orchestra, and in Seattle Opera's production of *The Magic Flute*. Ethan is a member of Green Lake Church, where **VALERIE SHIELDS**, our guest organist today, serves as Minister of Music. Our thanks for their presence today. We also welcome our beloved guest **PASTOR BARICH** to the pulpit today!

**FLOWERS FOR THE ALTAR** today are provided by Shirley Flory to the glory of God and in memory of dear friends.

### **FORUM TODAY & MAY 4:**

### **CREATION CARE AND CLIMATE CHANGE: Putting Faith into Action**

Join Jeff Thiel to talk about our understanding of what is happening in regard to climate change, the status of solutions, how we can do our part as households, and as a congregation.

**Jeff Thiel**, a member of St. Andrew's Lutheran, has been involved in environmental stewardship for years. Jeff is the CEO of Vitidore, a company that is dedicated to developing and advocating for sustainable agricultural practices and to connecting farmers, NGOs, & companies with sustainable technologies and new revenue streams.

### **THIS WEEK'S CALENDAR**

#### **Sunday, April 27**

#### **BLESSING OF THE QUILTS**

Worship	8:00 AM
Forum ( <i>Conf. Rm/Zoom</i> )	9:00 AM
Worship	10:30 AM

#### **Monday**

Food Addicts in Recovery ( <i>FH</i> )	7:00 PM
--	---------

#### **Tuesday (office closed)**

Pub Theology ( <i>@Good Society</i> )	7:00 PM
---------------------------------------	---------

#### **Wednesday**

Sewing & Service ( <i>downstairs</i> )	10:00 AM
Drop-in Tech Help ( <i>narthex</i> )	10:00 AM
Staff Meeting ( <i>library</i> )	12:30 PM
AA Counterbalance ( <i>FH</i> )	7:30 PM

#### **Thursday**

Choir Rehearsal ( <i>Music Rm</i> )	7:00 PM
-------------------------------------	---------

#### **Friday (office closed)**

LWR Ingathering @ORLC	8 AM to 2 PM
-----------------------	--------------

#### **Saturday**

LWR Ingathering @ORLC	8– 11:30 AM
Alanon ( <i>upstairs</i> )	10:30 AM
AA Shanty Trudgers ( <i>upstairs</i> )	7:00 PM

#### **Sunday, May 4**


Worship	8:00 AM
Forum ( <i>Conf. Rm/Zoom</i> )	9:00 AM
Worship	10:30 AM
QALC Fine Arts: Hymn Festival with Dr. Karen Black	4:00 PM

Conversation not Conversion

**TUESDAY, APRIL 29**

# PUB THEOLOGY

ALL ARE WELCOME



THE GOOD SOCIETY

DIFFERENT BREWS -- DIFFERENT VIEWS

Wednesdays  
10-11:30 AM

**DROP-IN TECH HELP**

Need Help:

- Figuring out your phone?
- Setting up an online account?
- Trouble shooting a software problem?
- Figuring out social media?

Drop in to our tech help and talk with someone who can assist with technology related questions

SENIORS WELCOME



Queen Anne Lutheran Church

2400 8th Ave W  
Seattle, WA

FREE

# hymn FESTIVAL

featuring **Dr. Karen Black**  
organist and composer

Wartburg College, Waverly, Iowa

**Sunday, May 4 at 4 p.m.**

Duration: approx. 80 min. | Reception to follow

**All are welcome**

**Suggested donation: \$20 or as you can**

Presented by and benefiting Queen Anne Lutheran Church Fine Arts with support from the American Guild of Organists, Seattle Chapter



## **MAY 4 HYMN FESTIVAL – A call for volunteers!!**

**Volunteers will be needed – can you help?** We'll need four people to help serve and clean up after the event. We also need two people to pass out programs and take money. Anyone who would like to help should contact Kyle Haugen or Susan Evans.

**ARE YOU INTERESTED IN MEMBERSHIP?** Are you interested in becoming a new member of Queen Anne Lutheran Church, or transferring your membership from another congregation? If so, Pastor Dan has a three-session series just for you.

**Curious about the Lutheran Faith?** Please join Pastor Dan as he meets with prospective new members on **May 4th after the 10:30 AM service** in the Conference Room, or email him at [pastor@queenannelutheran.org](mailto:pastor@queenannelutheran.org).



**BEFORE YOU GO: Getting Your Ducks in a Row**

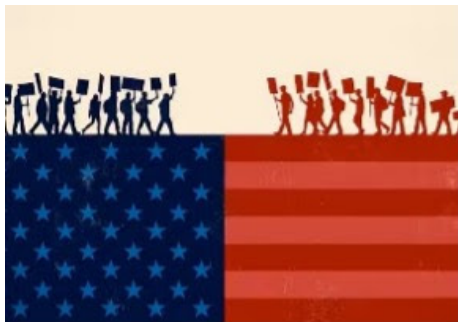
You are invited to this practical and informative workshop covering

- How best to make sure one's wishes are respected – Power of Attorney & other details
- Burial, cremation, and newer options for disposition
- Memorial and funeral plans

Interested in gathering information? Join Denise Anderson from Evergreen Washelli in the Conference Rm, Saturday May 10 at 10 AM.

**Sign up in the narthex, or RSVP to [programming@queenannelutheran.org](mailto:programming@queenannelutheran.org)**

## **DEPOLARIZING OURSELVES For Faith Communities**



**Are You Worried About the State of Our Country?**

**Step 1: Look at Ourselves**

**Please join us on Saturday, May 17:**

**10:30 to Noon** in the Conference Room

This is a time of facilitated small group discussion using resources from **Braver Angels**.\*

Please sign up in the narthex, or by contacting Ingrid

([ingridwysong@live.com](mailto:ingridwysong@live.com))

*\*Braver Angels is helping to bring Americans together to bridge the partisan divide and strengthen our democratic republic.*

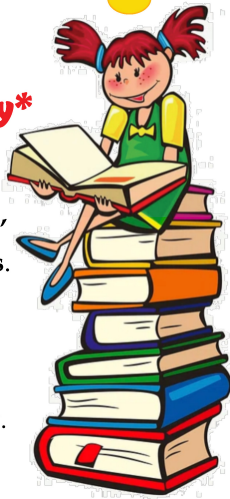


# Children's Book Drive, through May!

Please help fill  
the insatiable need of  
**Our Little Free Library\***  
for donations of  
young adult & kids' books,  
and books for early readers.

Bring your donations  
to Queen Anne Lutheran  
throughout the month of May.

Neighborhood kids  
will thank you!



## RIDWELL COLLECTIONS:

Today, Corks • Non-perishable food

May 4: Eyeglasses

**YOUR OFFERINGS** of money, time and talents are much needed and appreciated. There is an offering plate near the exit for use today. No amount is too small.

In addition, there are many other ways to make your financial offerings, including credit cards, PayPal, Simply Giving, IRA distributions, Donor Advised Funds, and stock gifts. Talk to Myra Dittes, Tim Porter, Sallie Wilson, Jacqui Darroch, or any other member of the Executive or Finance Committees if you have questions. Use the QR code for complete information about giving.



## EASTER IS NOT A DAY: IT'S A SEASON!

*Here is what's upcoming for Sunday sermons – Intrigued? Join us for worship!*

May 4 – **Innocent or Guilty: St. Paul and the Sin of Misogyny**

May 11 (Mother's Day Special) – **The Forgotten Disciple(s) of Jesus Christ**

May 18 – **None of Us Are Going to Heaven:**

**What the Bible Actually Teaches about Life after Death**

## OFFICE HOURS THIS WEEK:

**Main Office:** The office will be closed this week but staff will be present Wednesday and Thursday; call 206-284-1960 if you need access. Barb Bash is away through May 2, working remotely. She can be reached at [admin@queenannelutheran.org](mailto:admin@queenannelutheran.org).

**Pastor Dan Peterson** is away, returning May 2. To contact Pastor Dan, e-mail [pastor@queenannelutheran.org](mailto:pastor@queenannelutheran.org). For emergency pastoral communications only, text him at 253-230-9695.

**Cantor Kyle** will be in the office Wednesday & Thursday afternoon and evening. E-mail [cantor@queenannelutheran.org](mailto:cantor@queenannelutheran.org).

**Dr. Lynn Hofstad** will be in the office Wednesday and Thursday, and at Pub Theology Tuesday evening. E-mail Lynn at [programming@queenannelutheran.org](mailto:programming@queenannelutheran.org).